

# Berlin *Trend*

Leichte Eintrübung im  
3. Quartal 2012

11. Dezember 2012



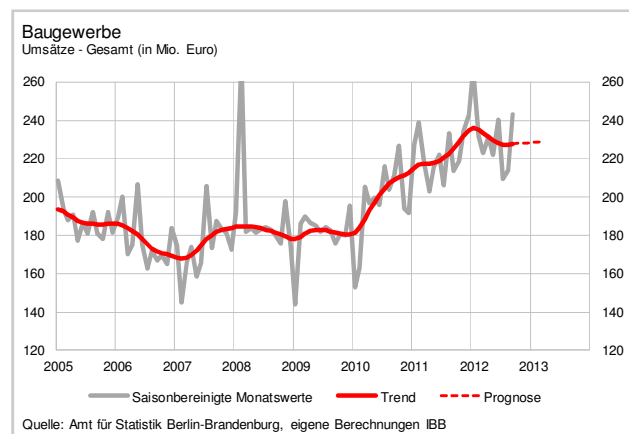
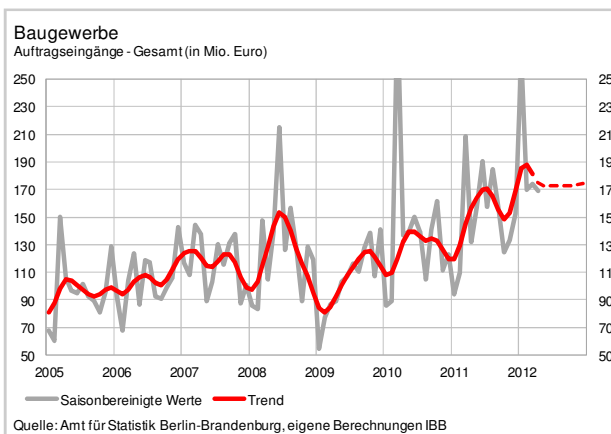
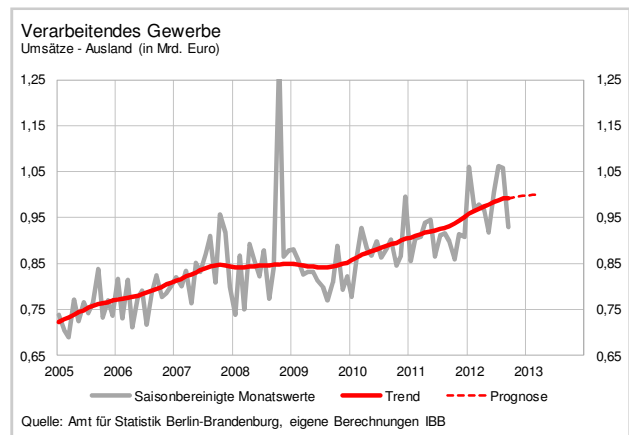
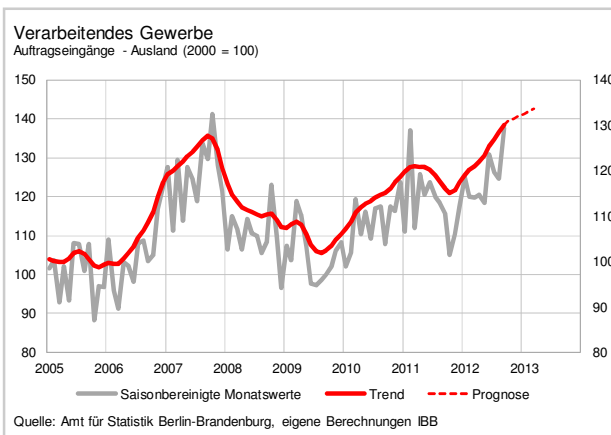
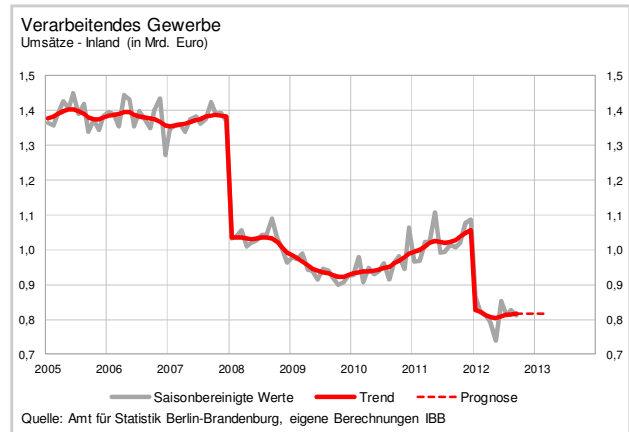
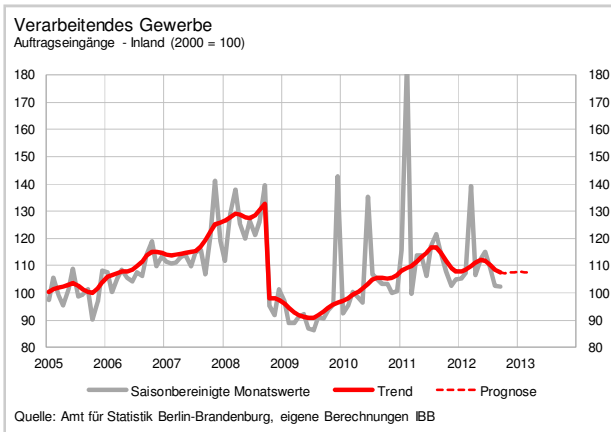
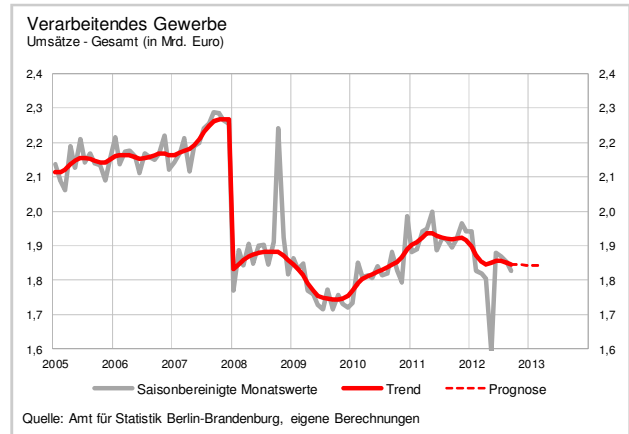
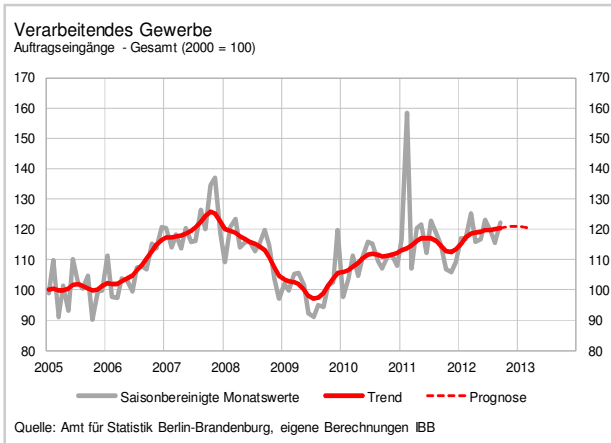
## Inhalt

Konjunktur-Tendenzen	4
Industrie	6
Baugewerbe	12
Einzelhandel	16
Gastgewerbe	17
Tourismus	18
Ein- und Ausfuhr	20
Arbeitsmarkt	22
Gründungsgeschehen	24
Unternehmensinsolvenzen	26
Wirtschaftsstruktur	27
Steuereinnahmen	28
Kredite	30

Merkmal	Veränderung ggü. Vorjahreszeitraum in %			
	aktueller Monat: September			
	12 Monatsdurchschnitt			3 Monatsd.
	2010	2011	2012	2012
<b>Auftragseingang</b>				
Verarbeitendes Gewerbe	+	+	-	=
Bauhauptgewerbe	++	+	+	-
<b>Gesamtumsatz</b>				
Verarbeitendes Gewerbe	=	+	-	-
darunter: Nahrungs- und Futtermittel	--	=	=	=
Druckerzeugnisse	=	+	=	=
Pharmazeut.Erzeugnisse	=	=	+	+
Metallerzeugnisse	=	+	+	+
Datenverarb.geräte, elektr.u.opt.Erzg.	=	=	=	+
Elektrische Ausrüstungen	+	++	+	+
Maschinenbau	-	+	+	++
Bauhauptgewerbe	+	+	+	=
darunter: Wohnungsbau	+	+	+	=
Wirtschaftsbau	+	+	+	=
Öffentlicher Bau	+	-	-	=
<b>Auslandsumsatz</b>				
Verarbeitendes Gewerbe	=	+	+	+
darunter: Nahrungs- und Futtermittel	-	+	-	-
Druckerzeugnisse	n.v.	n.v.	n.v.	n.v.
Pharmazeut.Erzeugnisse	n.v.	n.v.	n.v.	+
Metallerzeugnisse	=	=	++	++
Datenverarb.geräte, elektr.u.opt.Erzg.	+	=	=	++
Elektrische Ausrüstungen	+	=	=	++
Maschinenbau	--	+	++	++
<b>Beschäftigte</b>				
Verarbeitendes Gewerbe	=	+	=	=
Bauhauptgewerbe	+	+	=	=

> 20 %: ++	> -20% < -2%: -
> 2% < 20%: +	< -20%: --
> -2% < 2%: =	kein Wert: n.v.

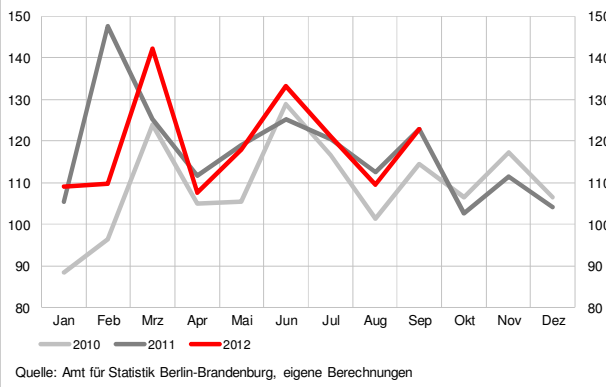
Trend



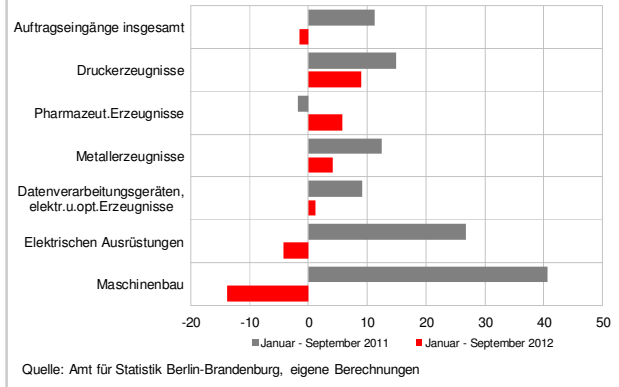
# Industrie - Auftragseingänge

(Durch die Änderung der Systematik der Wirtschaftszweige ist ein Vergleich mit den Vorjahren nur eingeschränkt möglich)

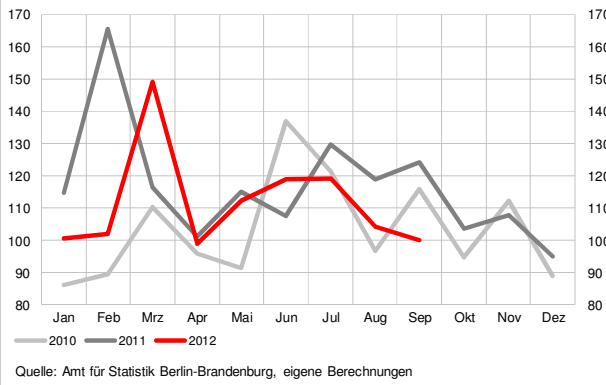
Auftragseingänge Industrie insgesamt



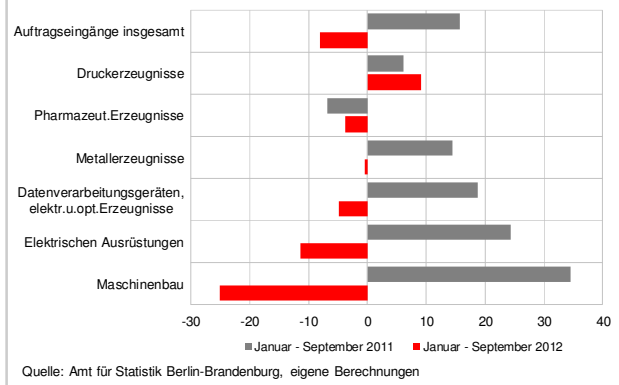
Trends der Auftragseingänge der wichtigsten Industriebranchen 2005 = 100 - Veränderung zum Vorjahreszeitraum in % (Volumenindex)



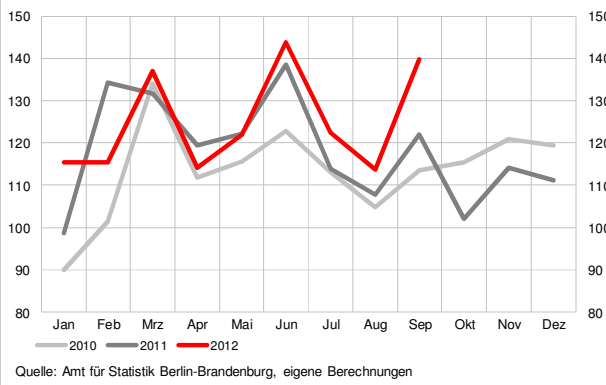
Auftragseingänge Industrie Inland 2005 = 100 (Volumenindex)



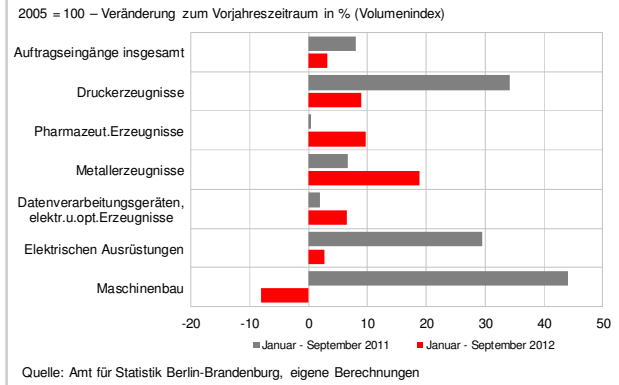
Trends der inländischen Auftragseingänge der wichtigsten Industriebranchen



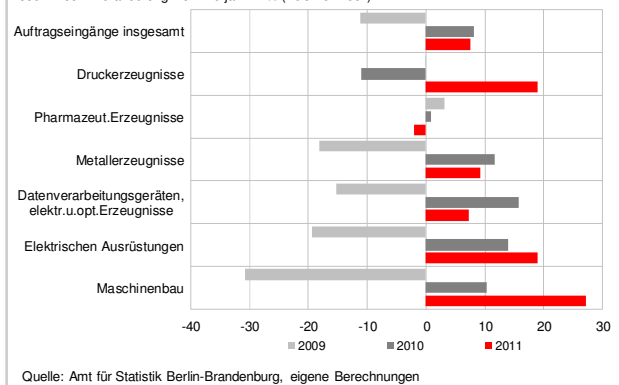
Auftragseingänge Industrie Ausland



Trends der ausländischen Auftragseingänge der wichtigsten Industriebranchen 2005 = 100 - Veränderung zum Vorjahreszeitraum in % (Volumenindex)

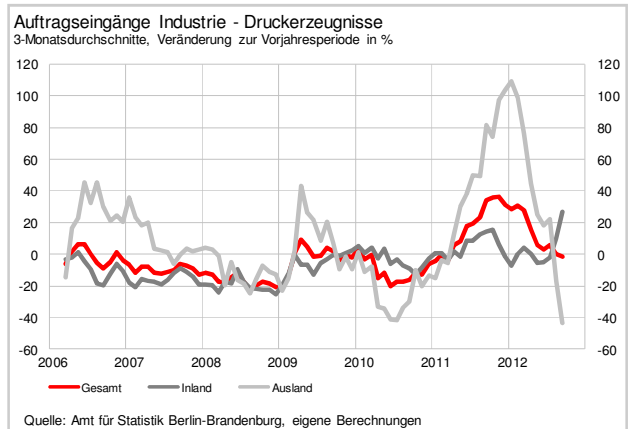
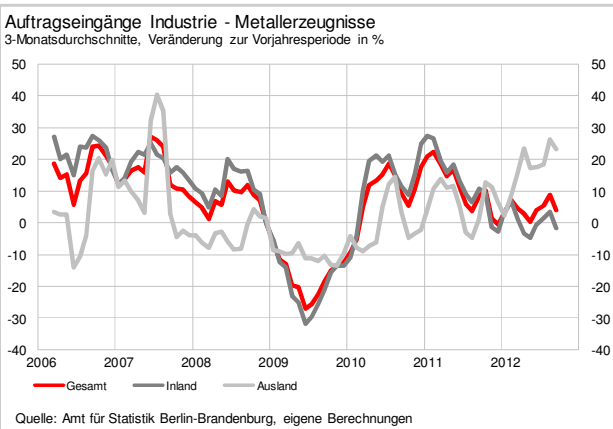
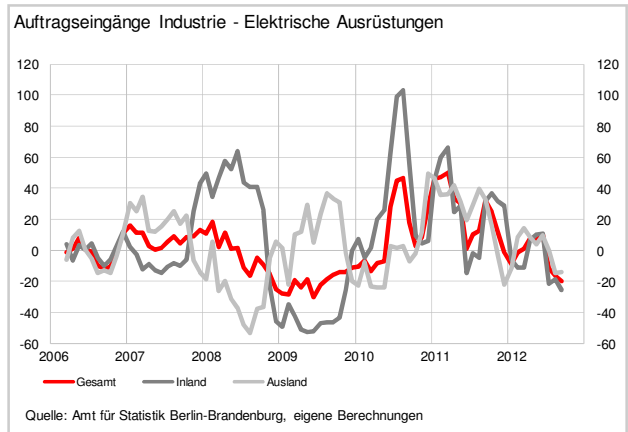
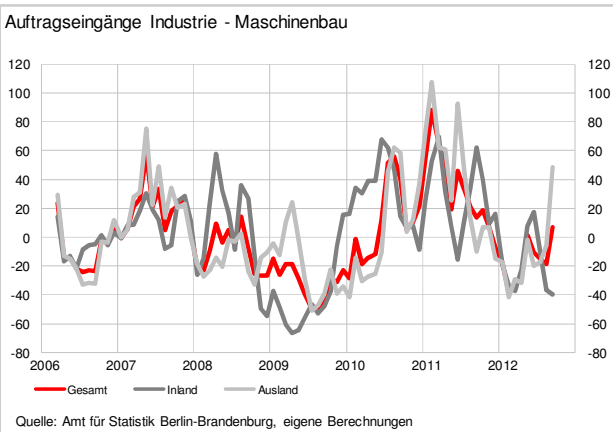
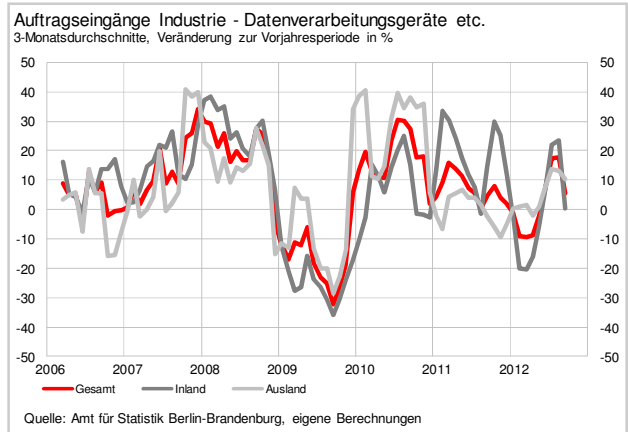
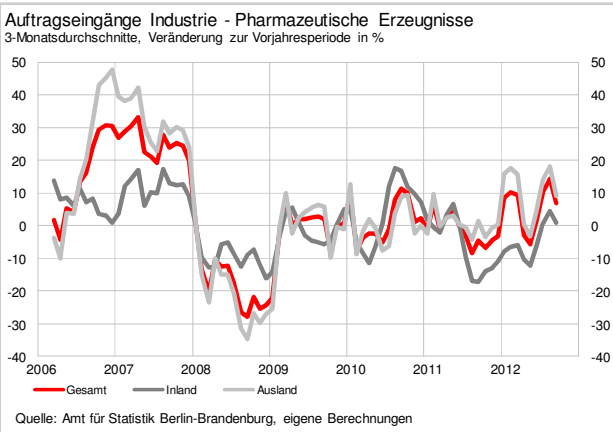
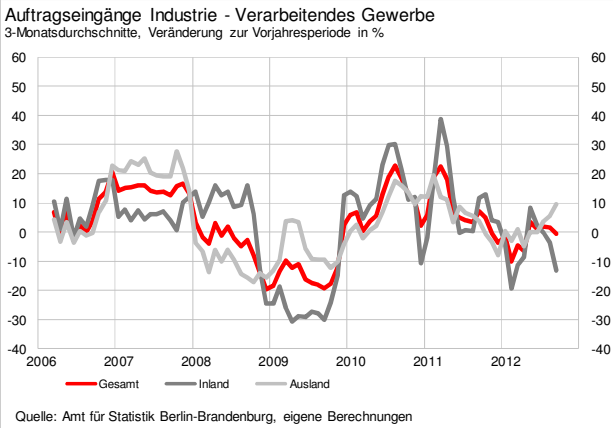


Trends der Auftragseingänge der wichtigsten Industriebranchen 2005 = 100 - Veränderung zum Vorjahr in % (Volumenindex)



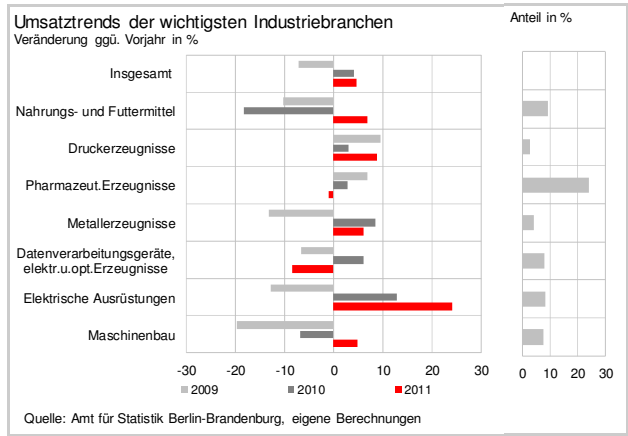
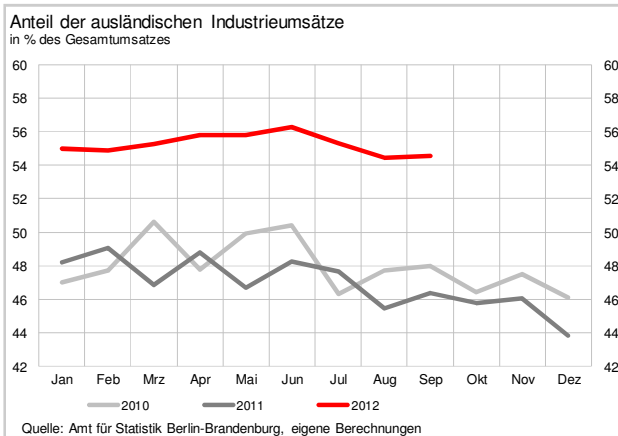
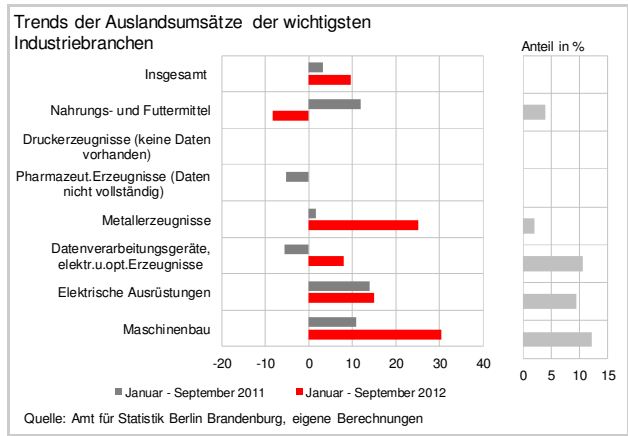
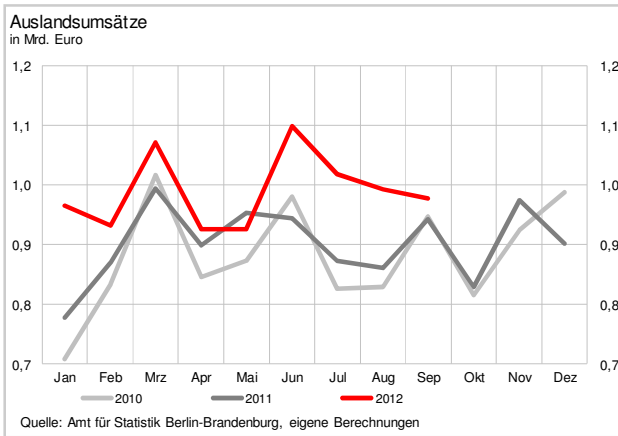
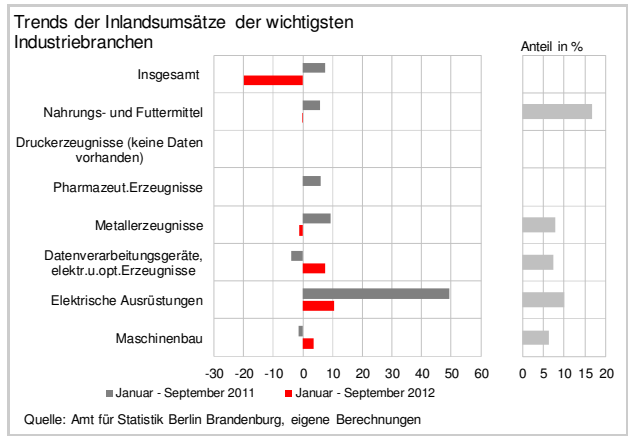
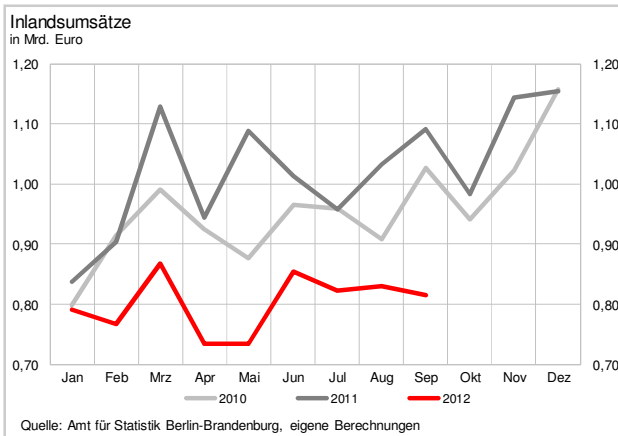
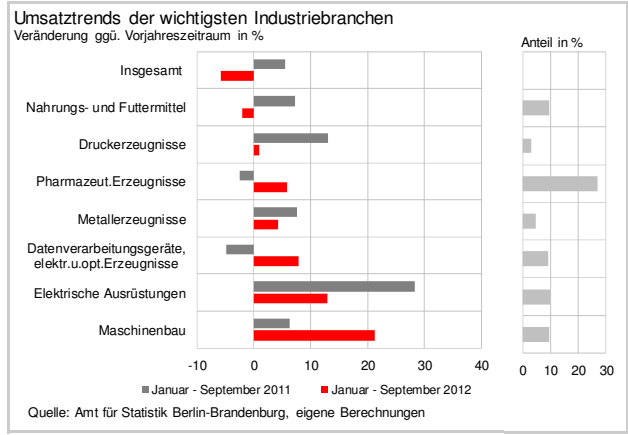
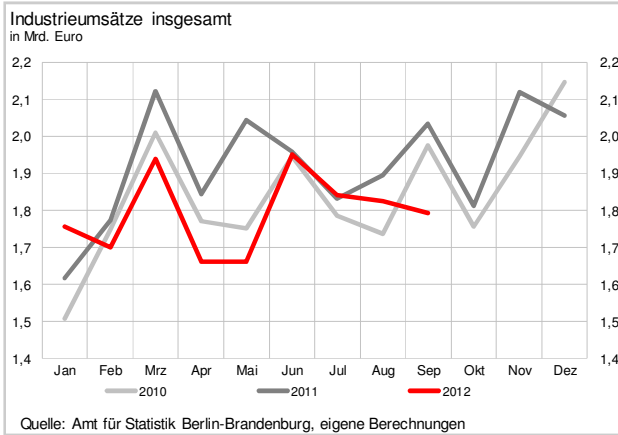
# Industrie - Auftragseingänge

(Durch die Änderung der Systematik der Wirtschaftszweige ist ein Vergleich mit den Vorjahren nur eingeschränkt möglich)



# Industrie - Umsätze

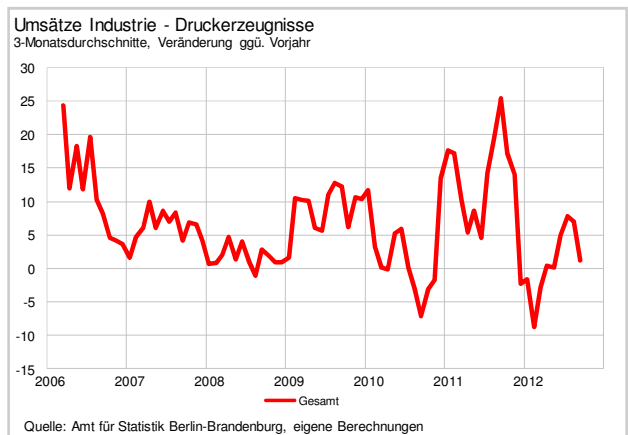
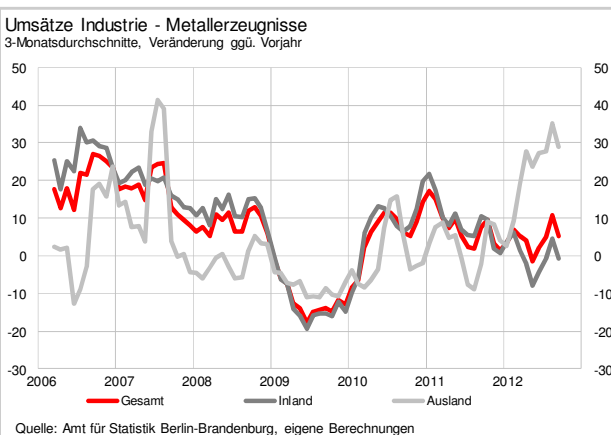
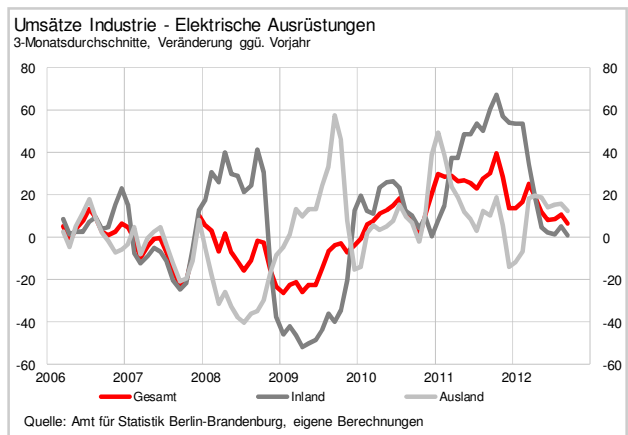
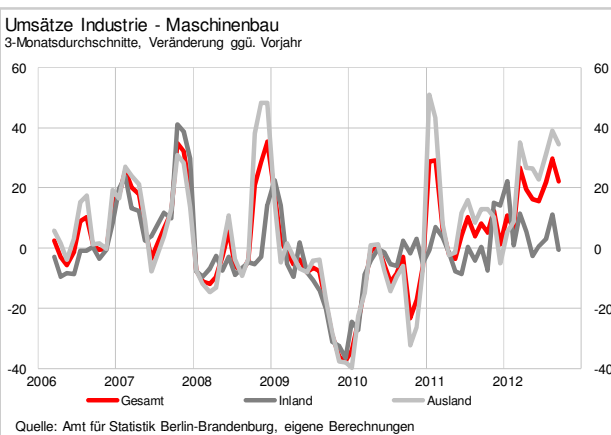
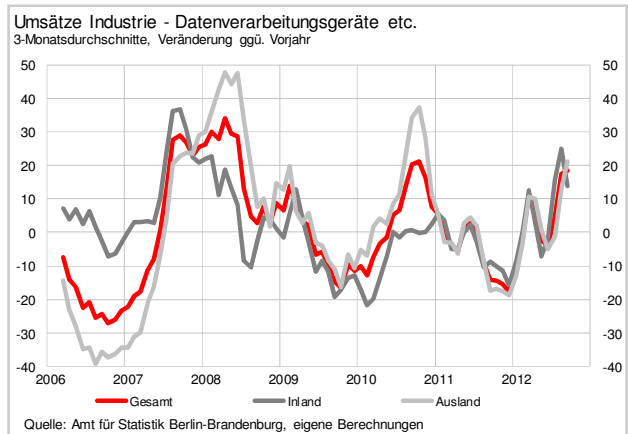
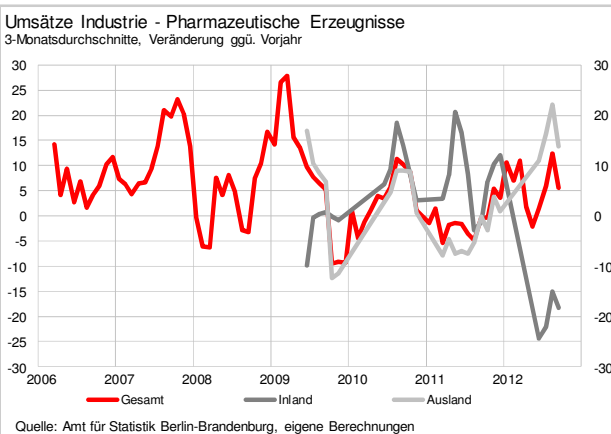
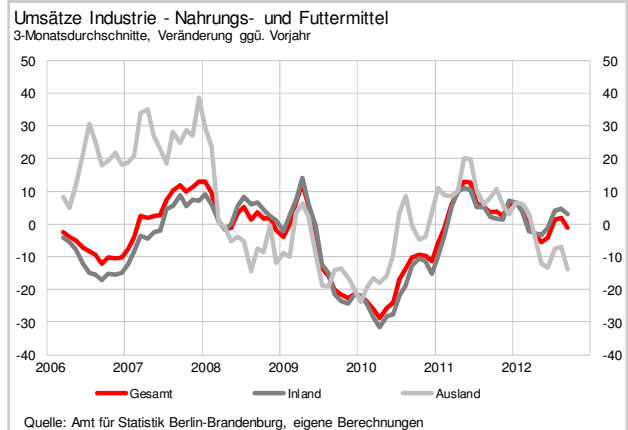
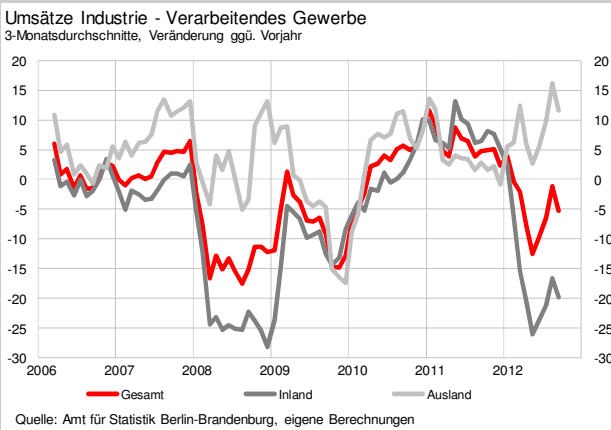
(Durch die Änderung der Systematik der Wirtschaftszweige ist ein Vergleich mit den Vorjahren nur eingeschränkt möglich)





# Industrie - Umsätze

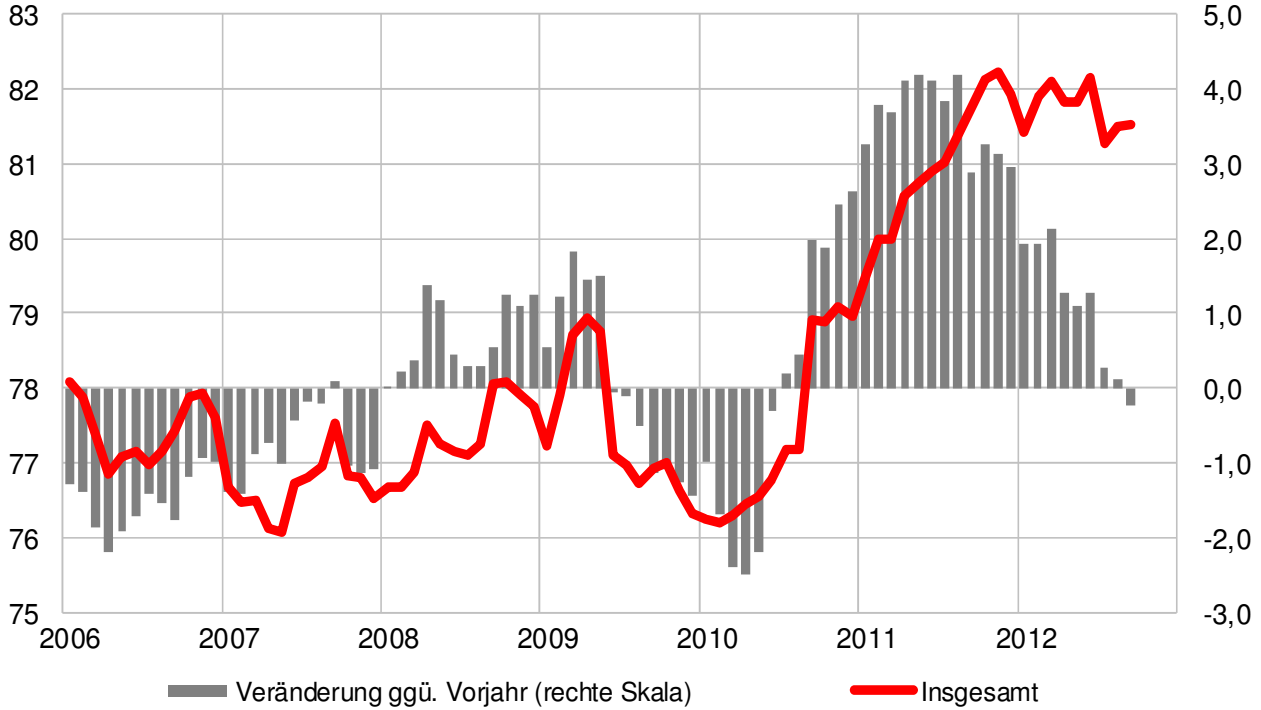
(Durch die Änderung der Systematik der Wirtschaftszweige ist ein Vergleich mit den Vorjahren nur eingeschränkt möglich)



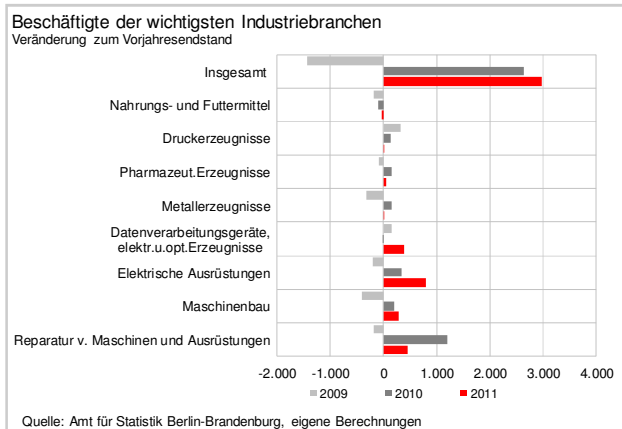
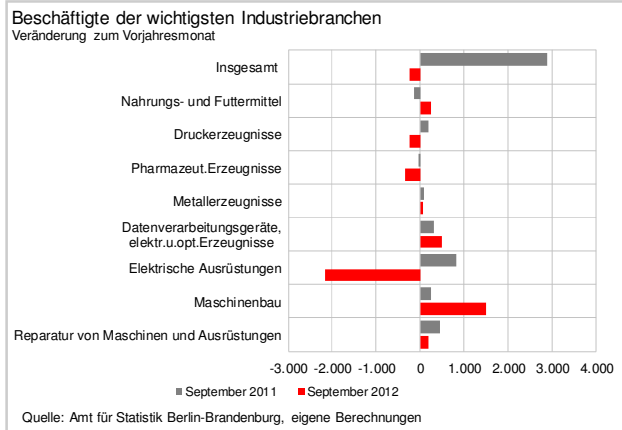
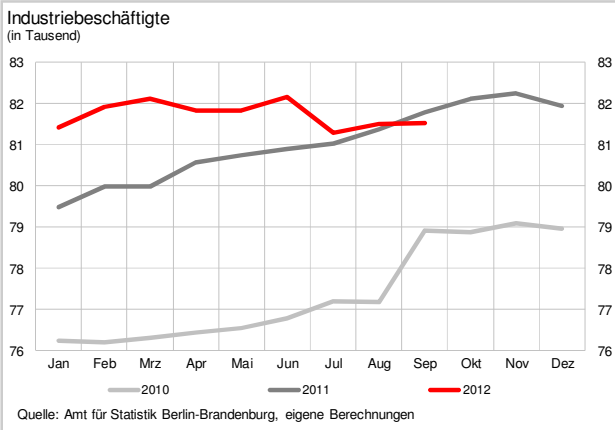
# Industrie - Beschäftigte

(Durch die Änderung der Systematik der Wirtschaftszweige ist ein Vergleich mit den Vorjahren nur eingeschränkt möglich)

## Industriebeschäftigte (in Tausend)

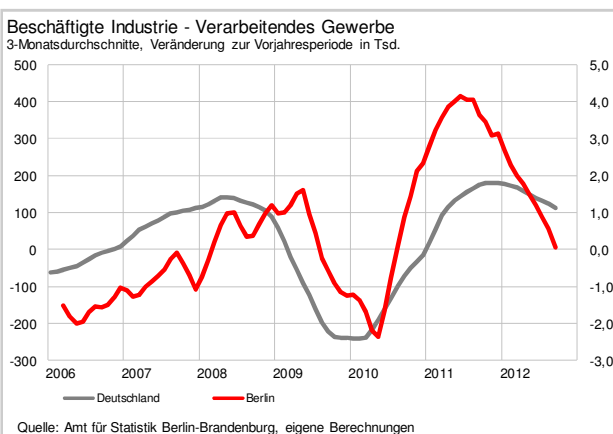
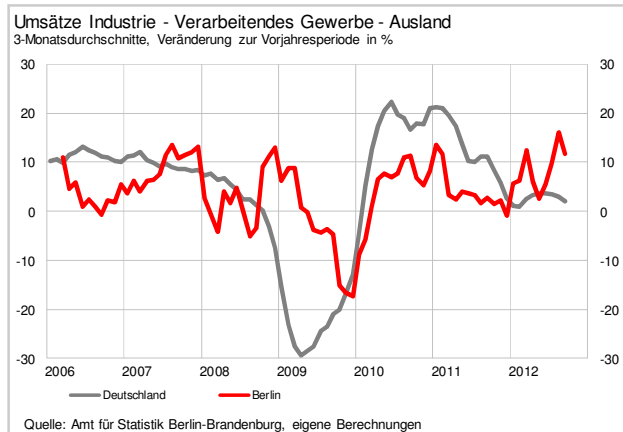
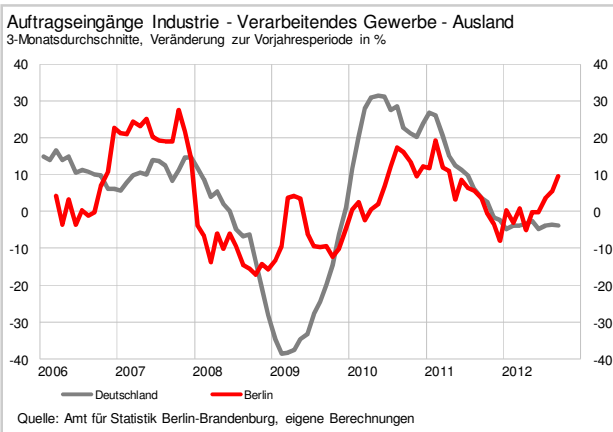
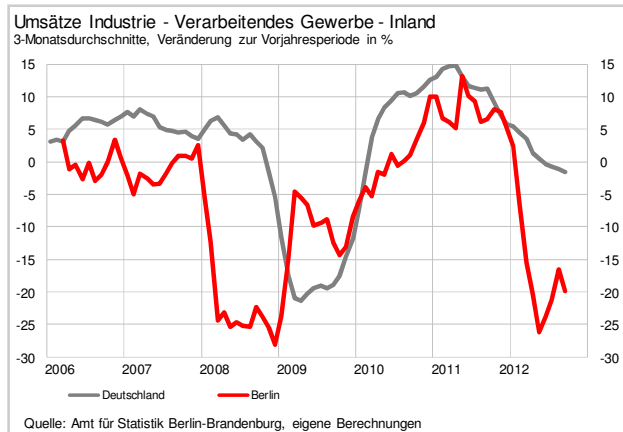
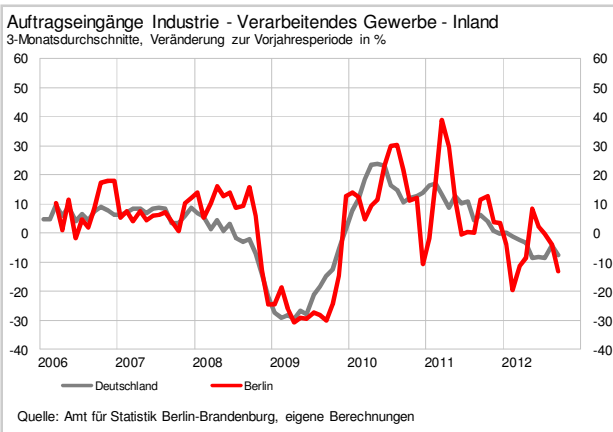
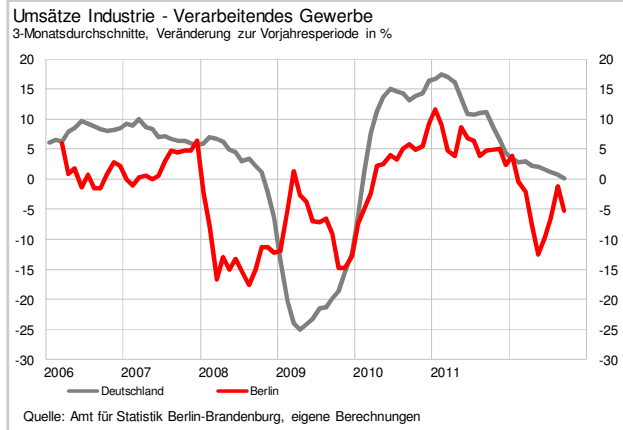
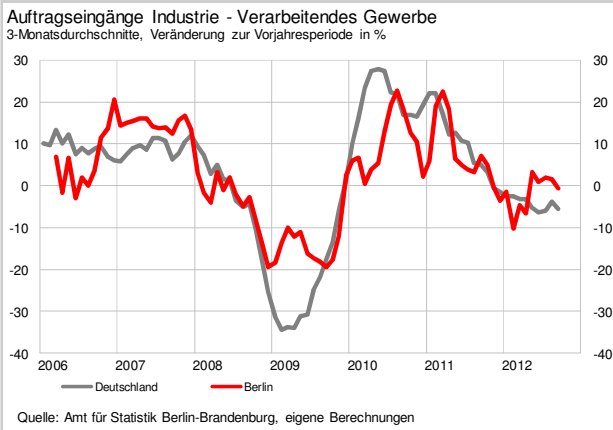


Quelle: Amt für Statistik Berlin-Brandenburg, eigene Berechnungen

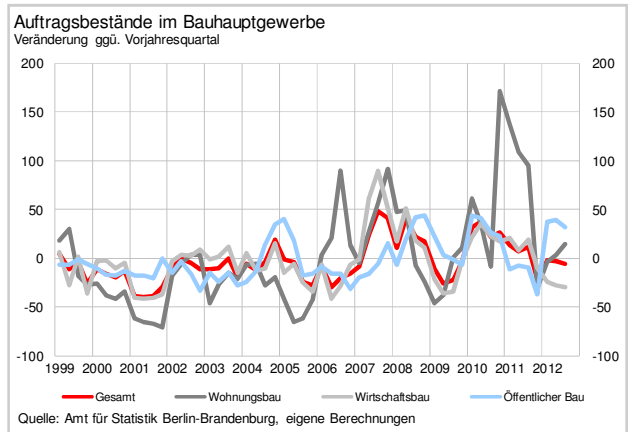
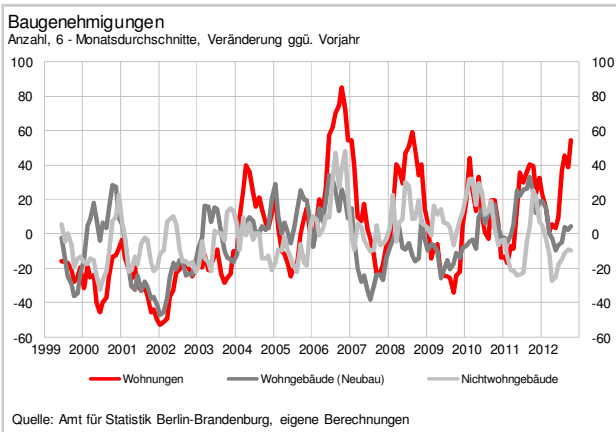
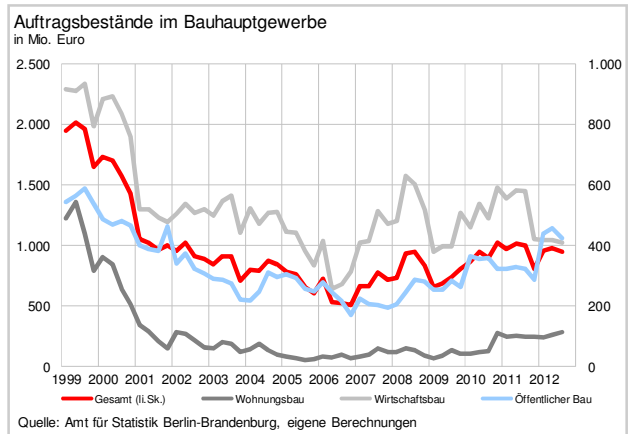
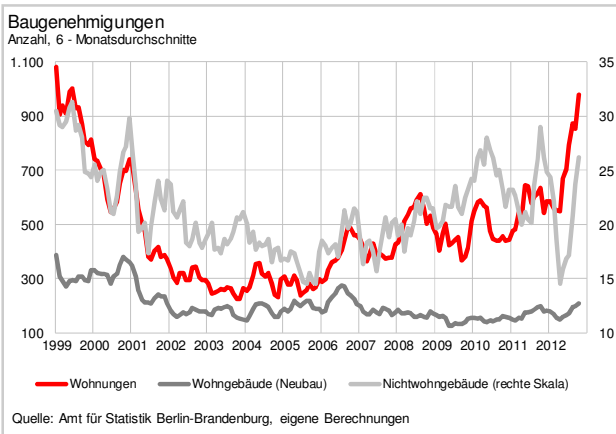
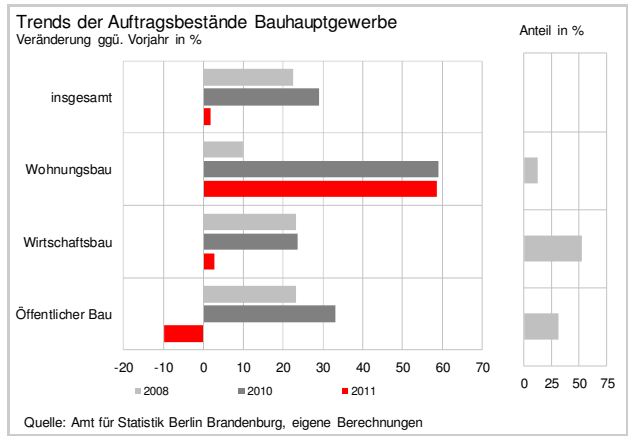
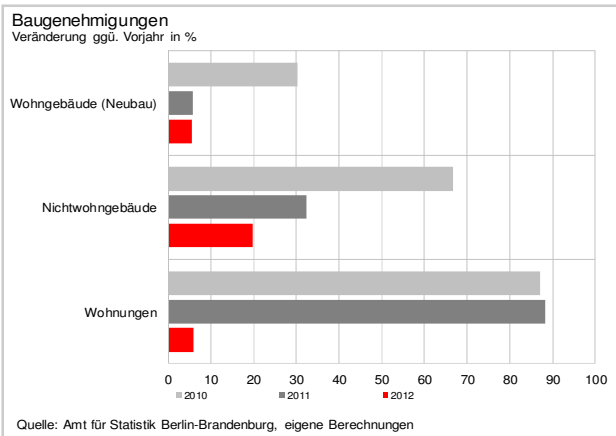
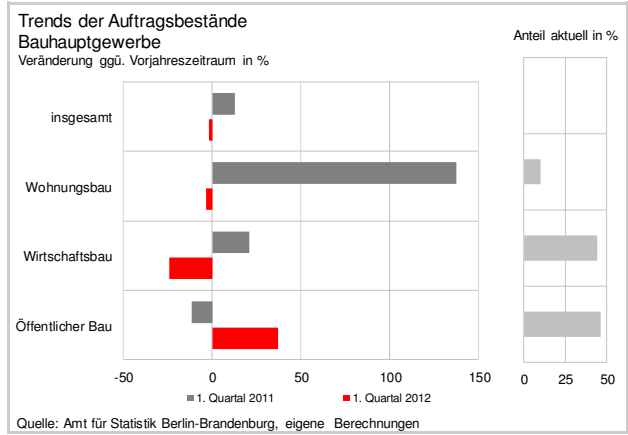
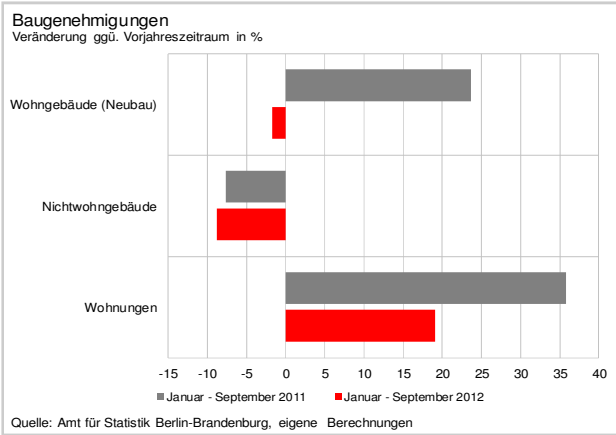


# Industrie - Auftragseingänge und Umsätze

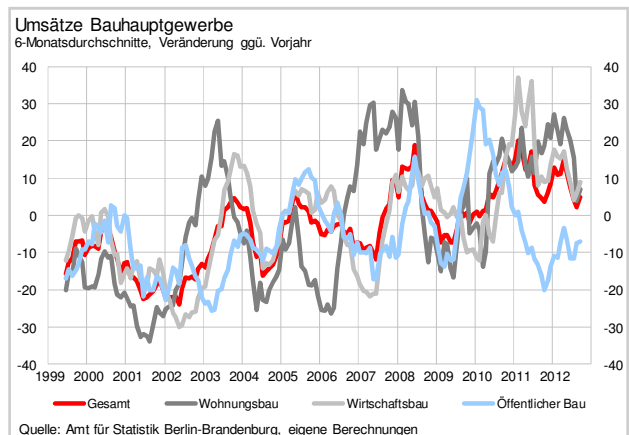
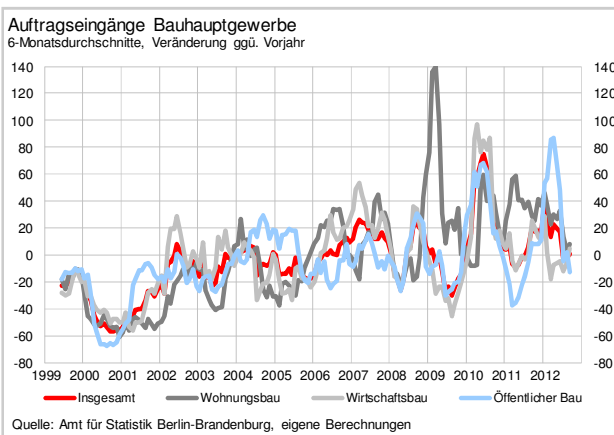
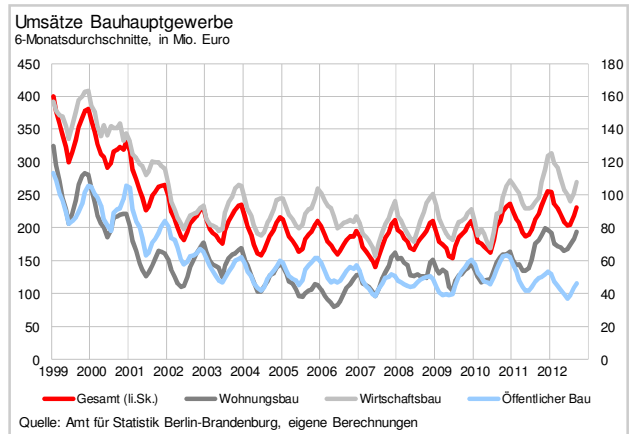
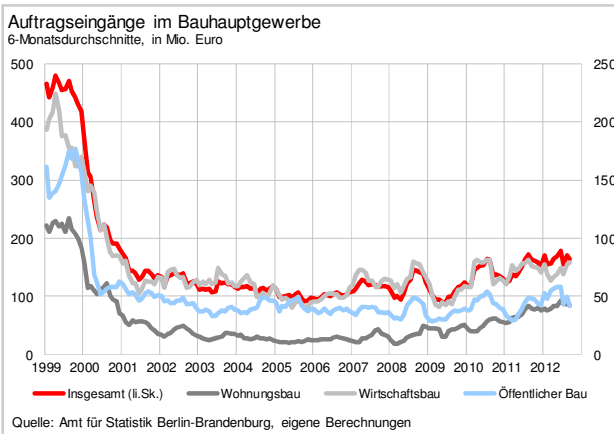
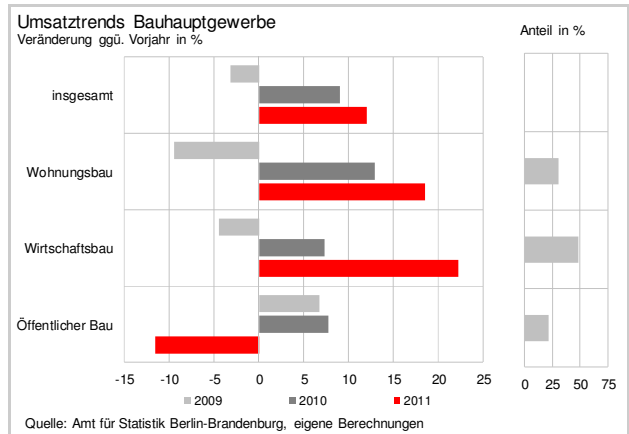
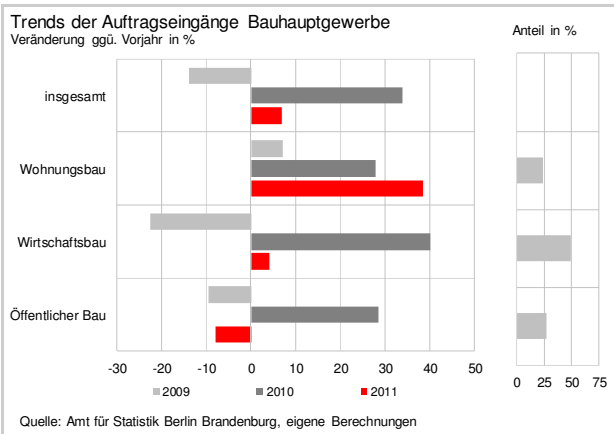
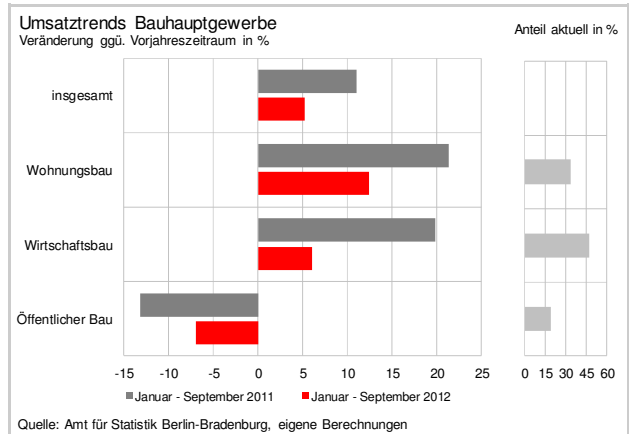
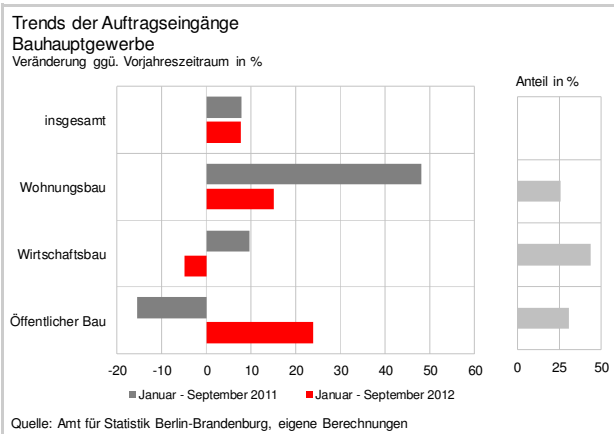
(Durch die Änderung der Systematik der Wirtschaftszweige ist ein Vergleich mit den Vorjahren nur eingeschränkt möglich)



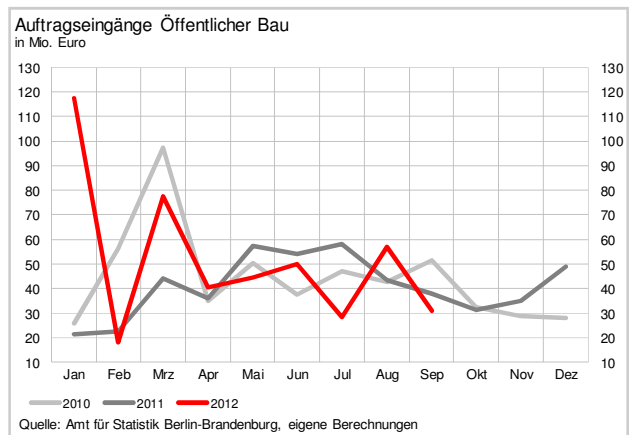
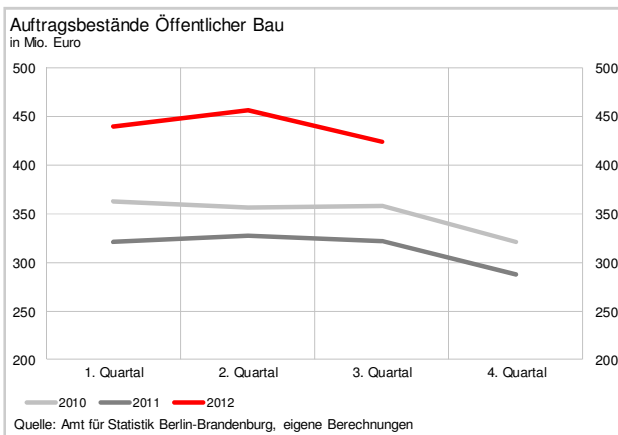
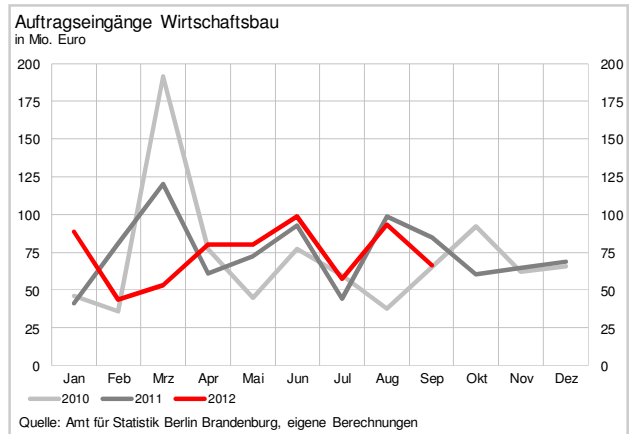
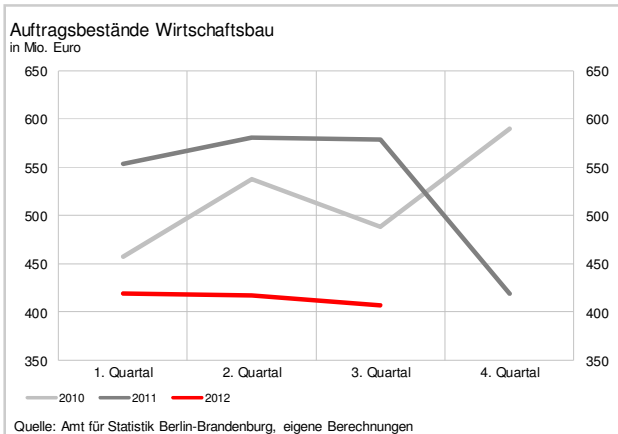
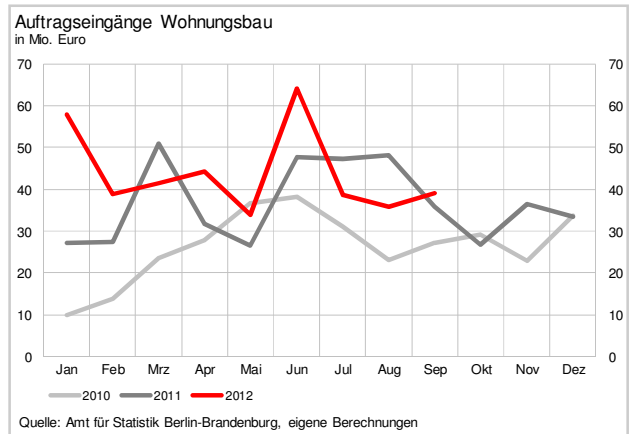
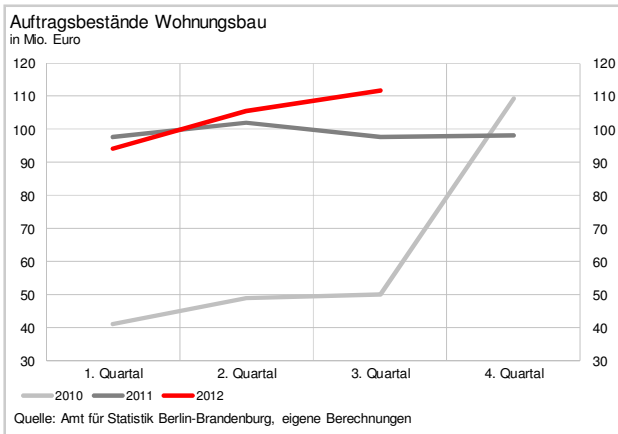
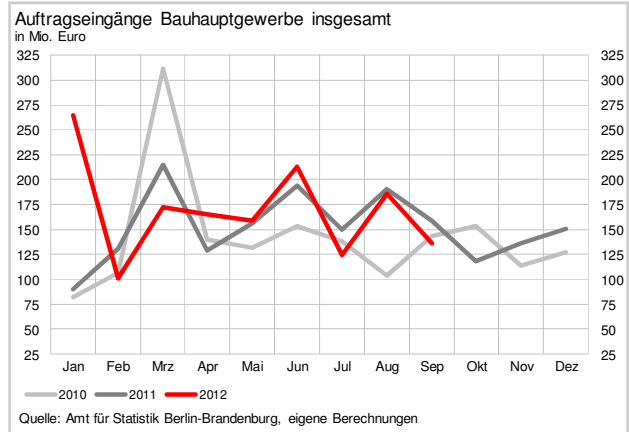
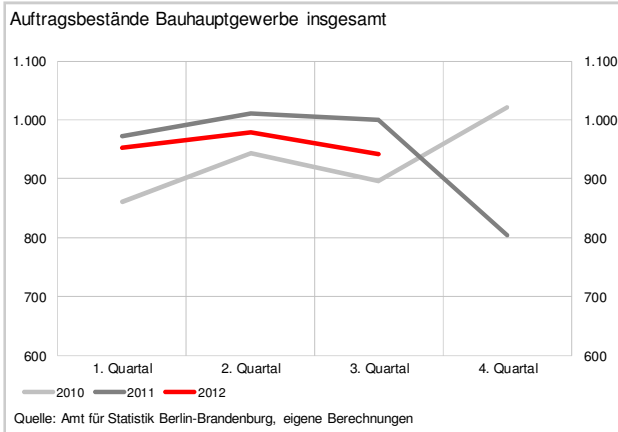
# Baugewerbe



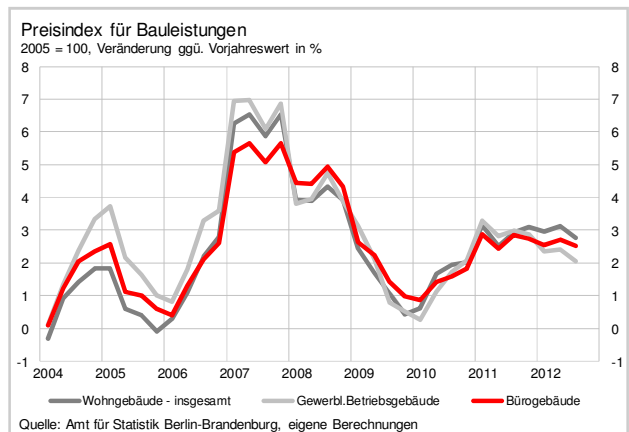
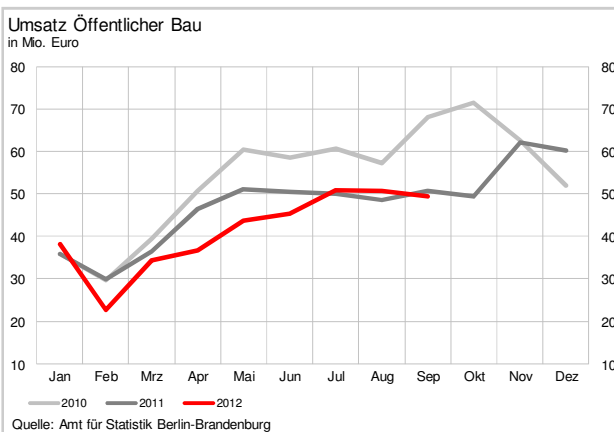
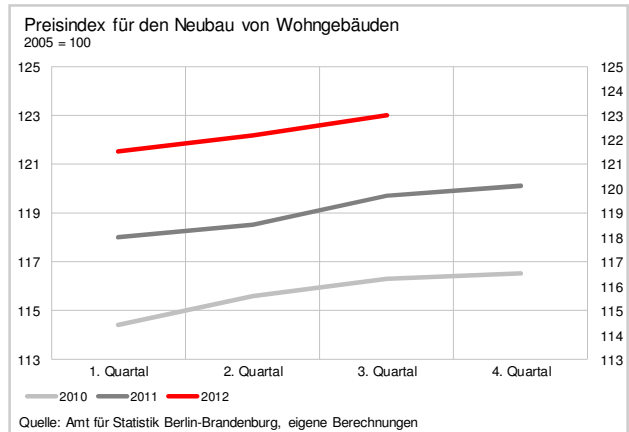
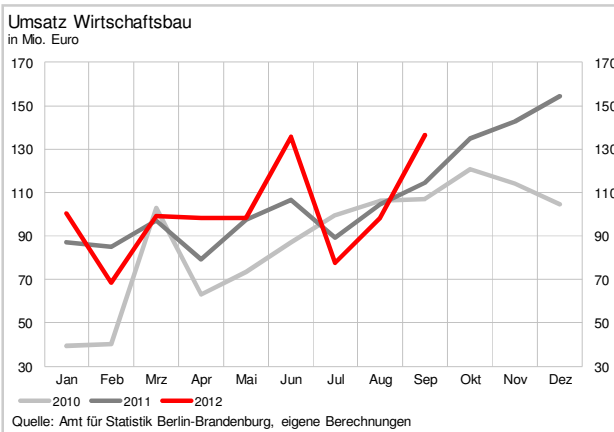
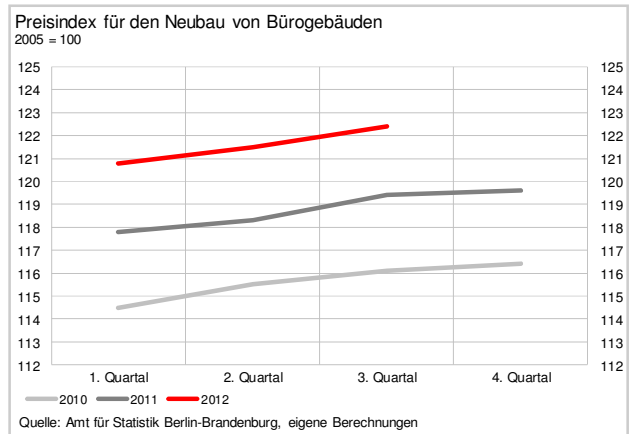
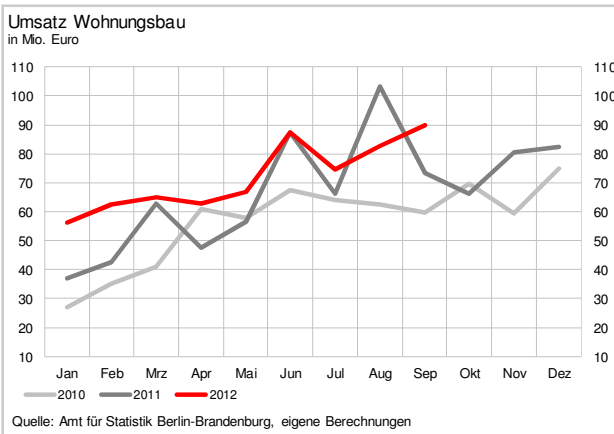
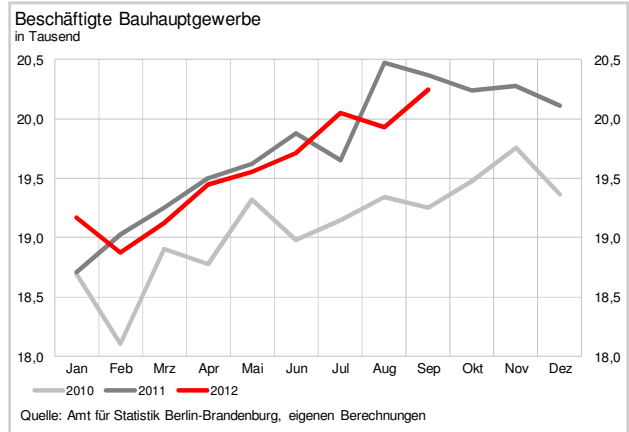
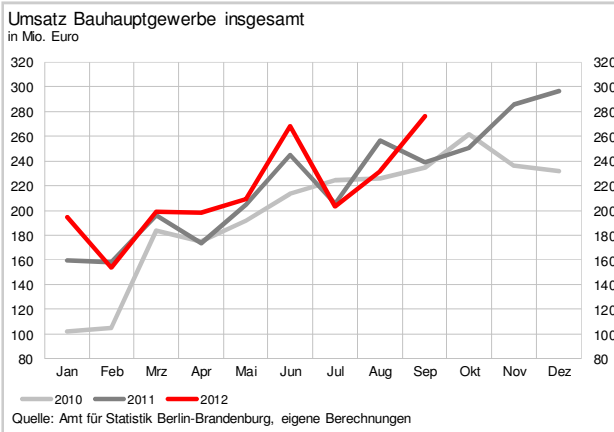
# Baugewerbe



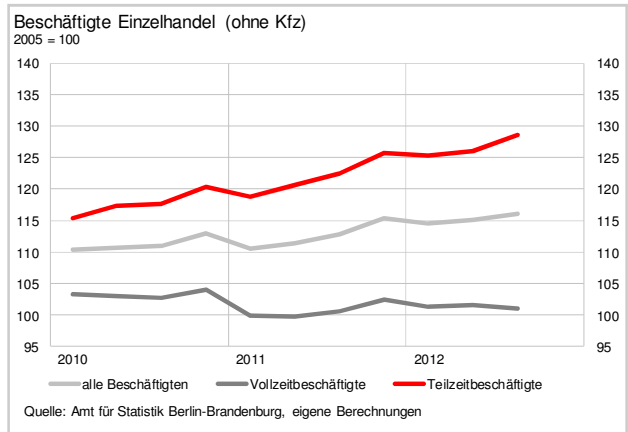
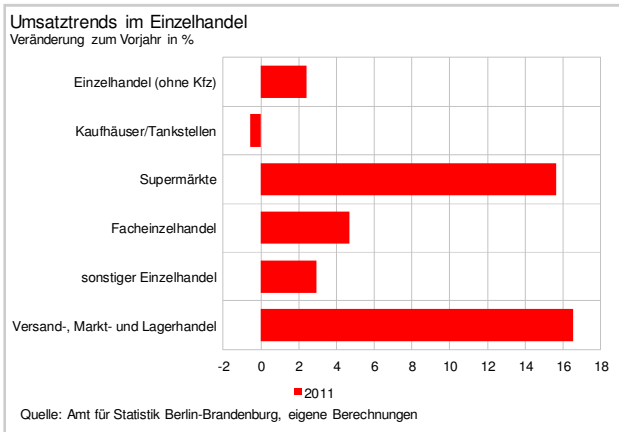
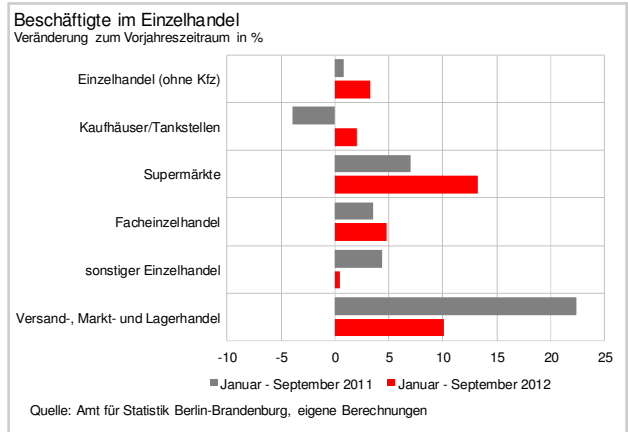
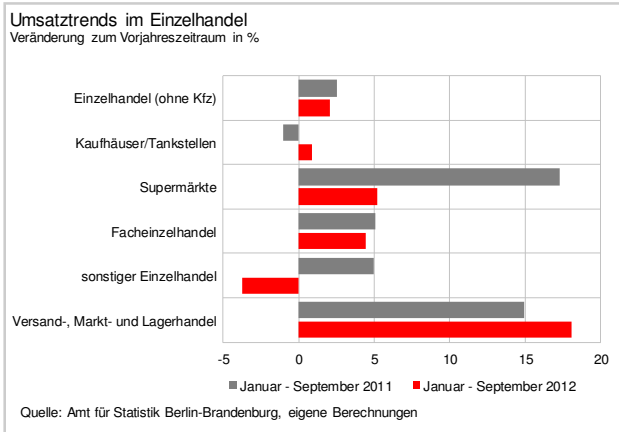
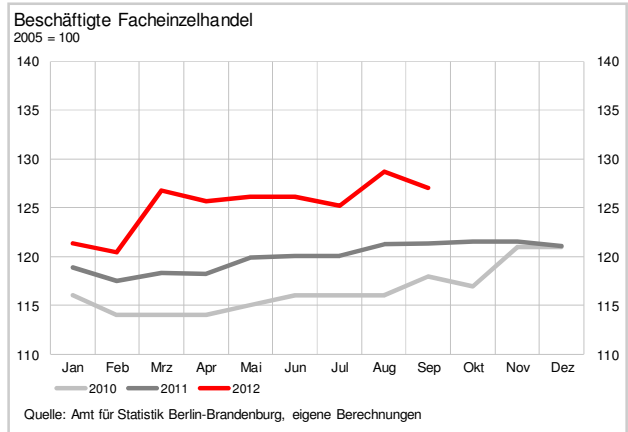
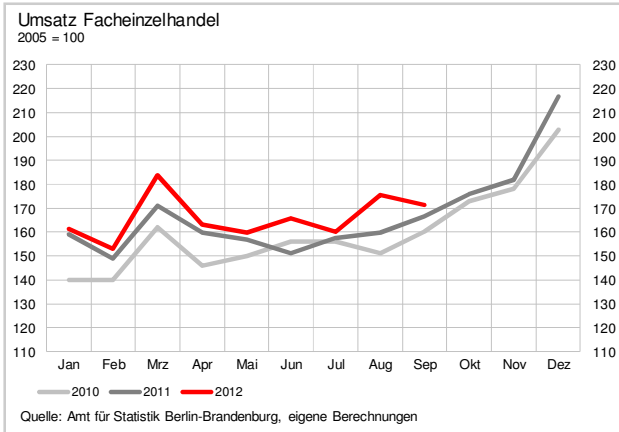
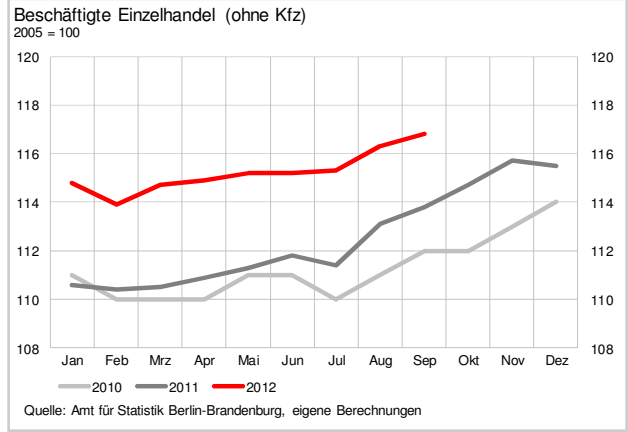
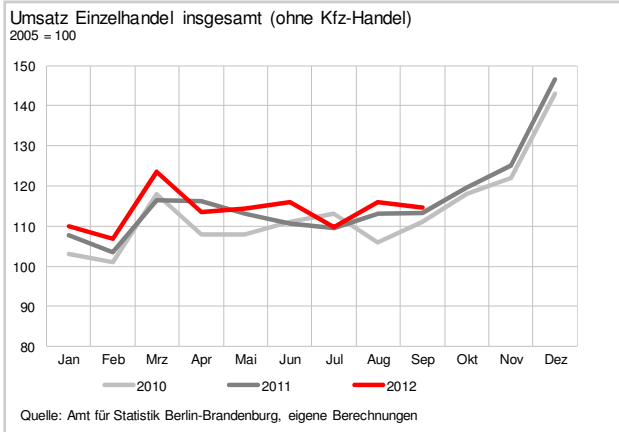
# Baugewerbe



# Baugewerbe

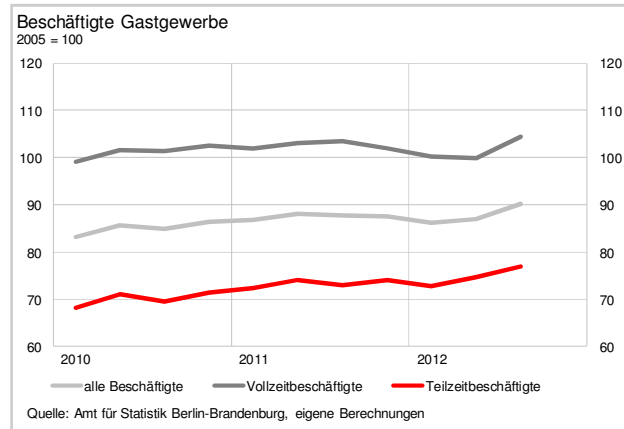
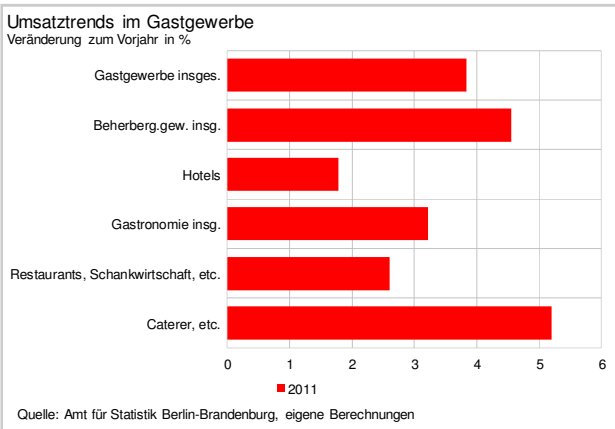
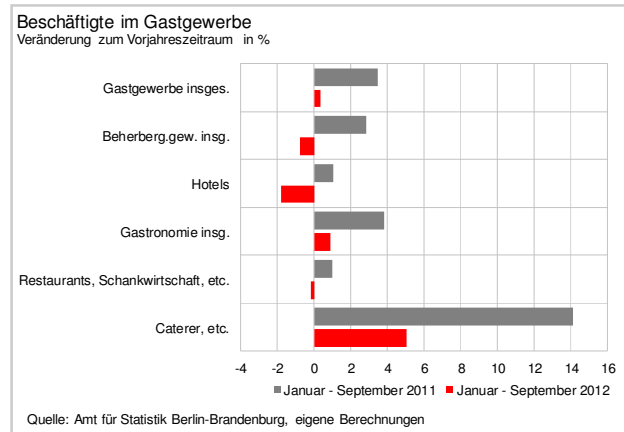
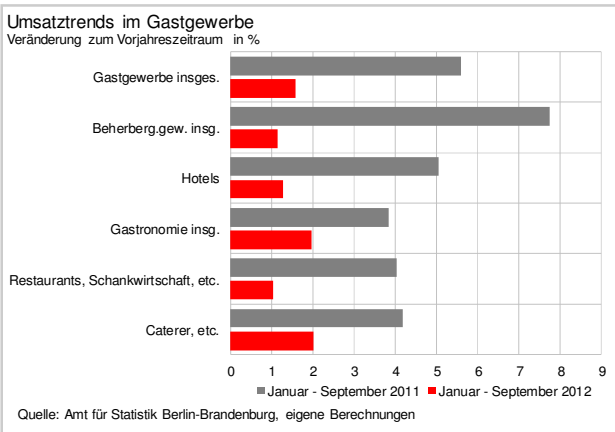
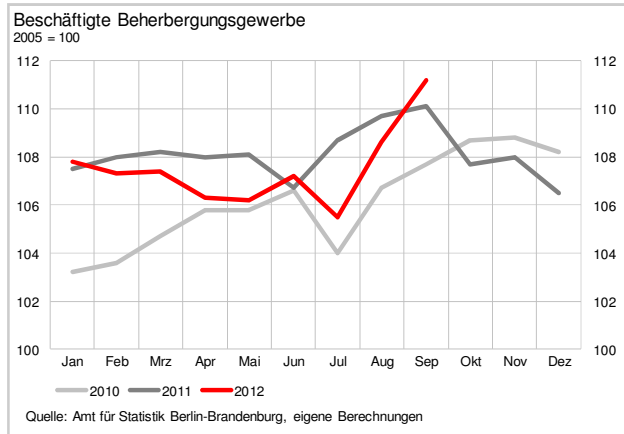
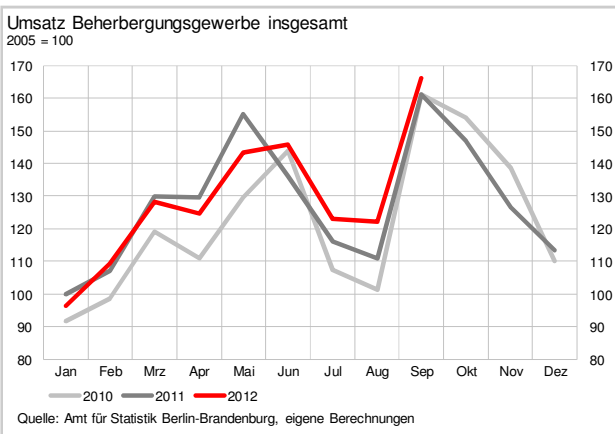
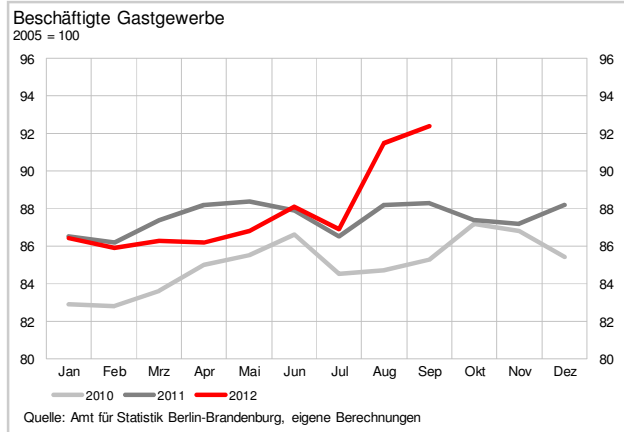
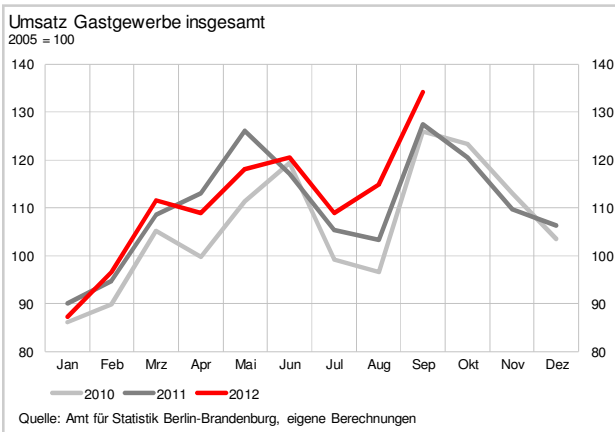


Berlin Trend 12/2012  
Einzelhandel

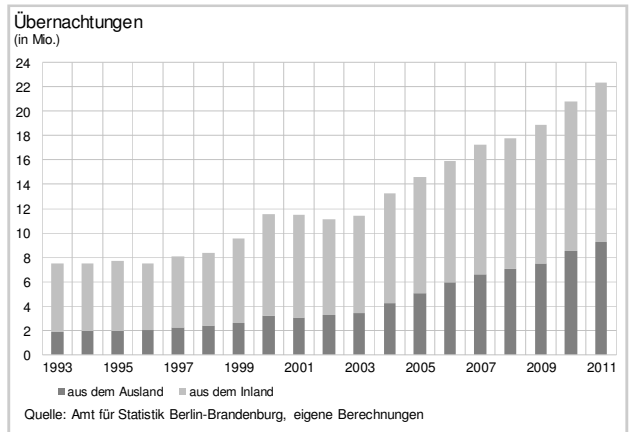
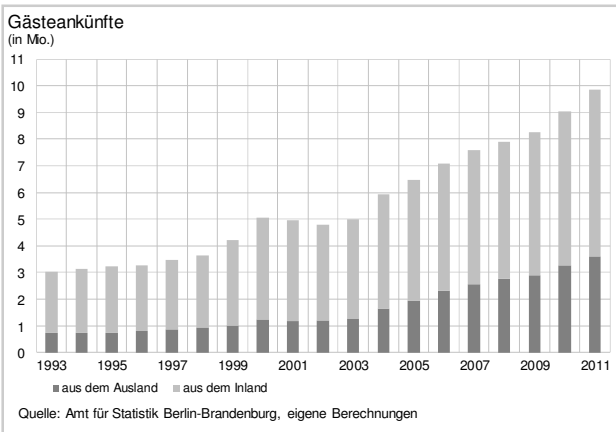
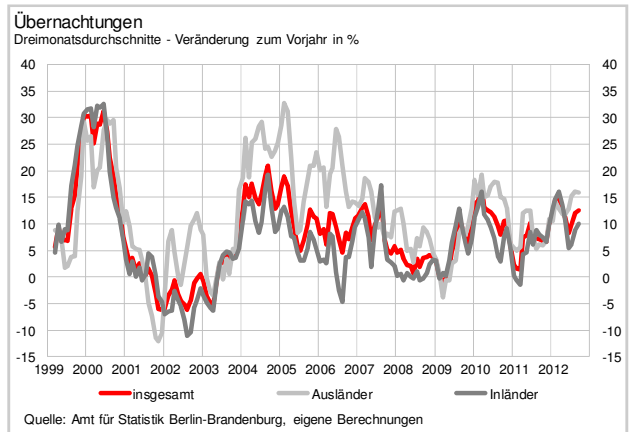
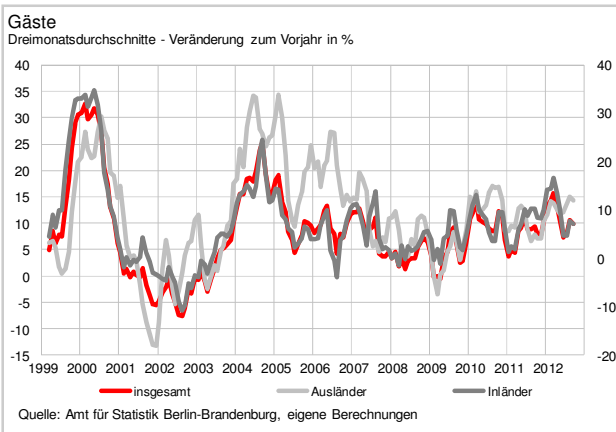
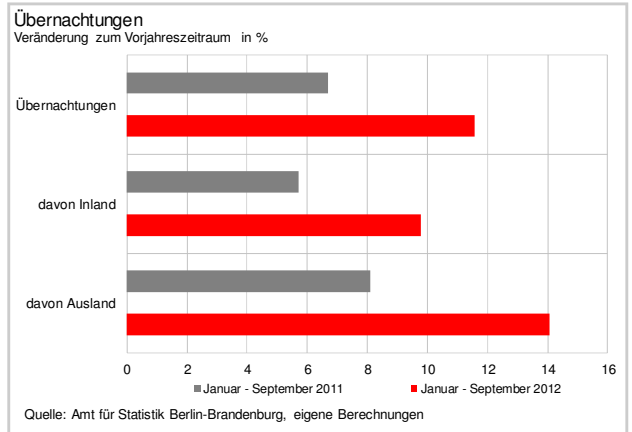
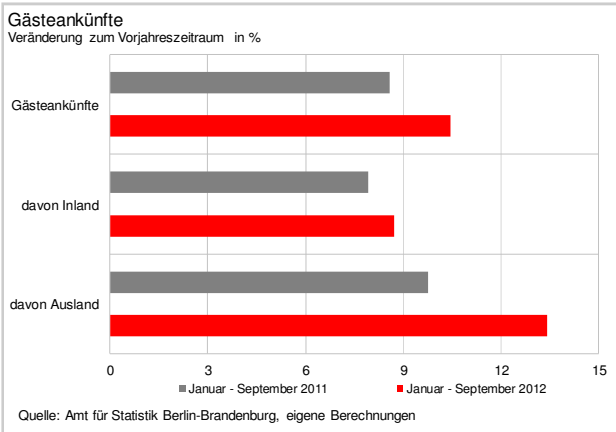
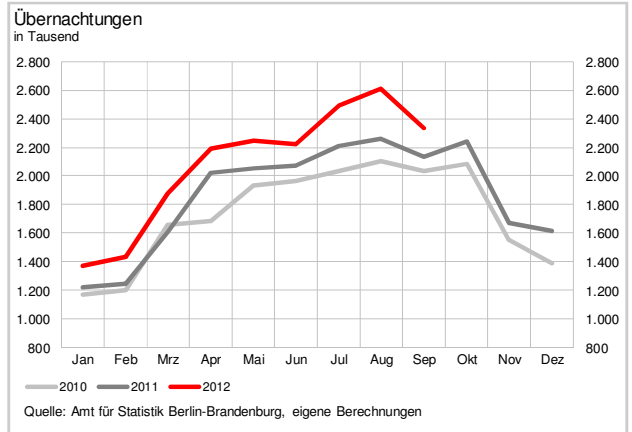
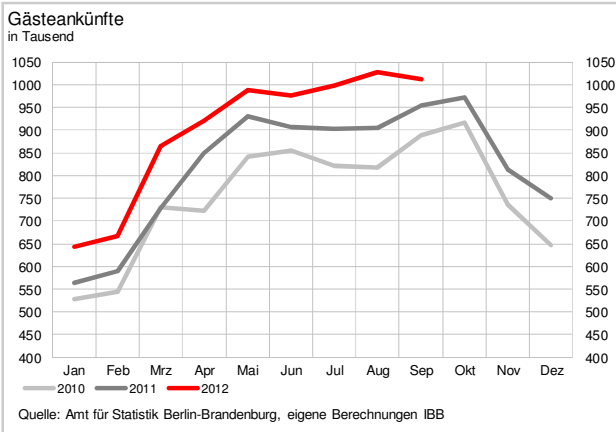




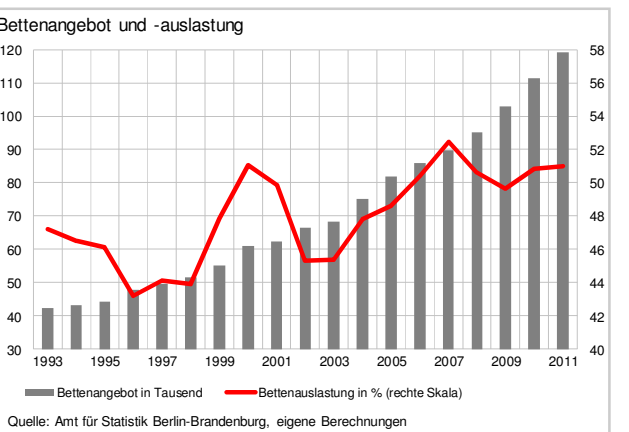
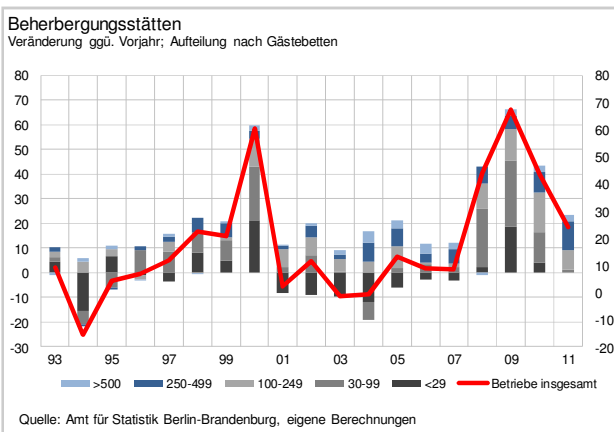
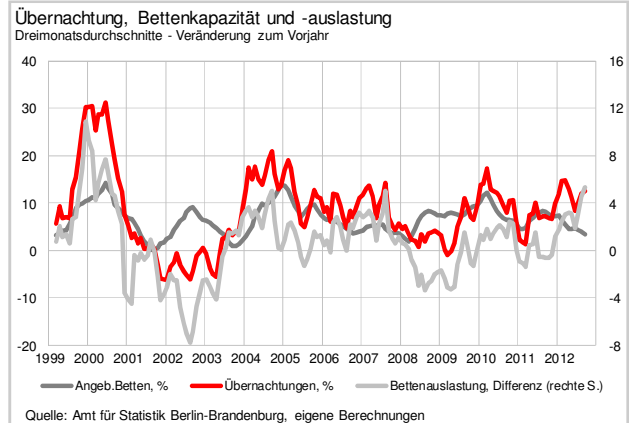
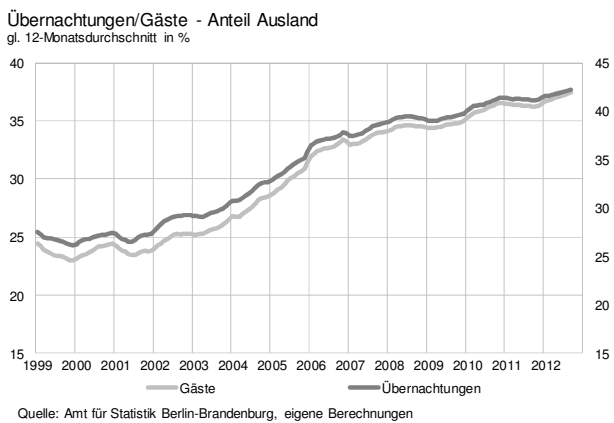
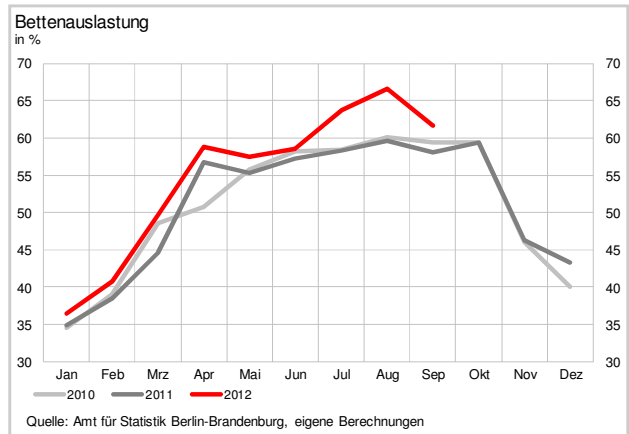
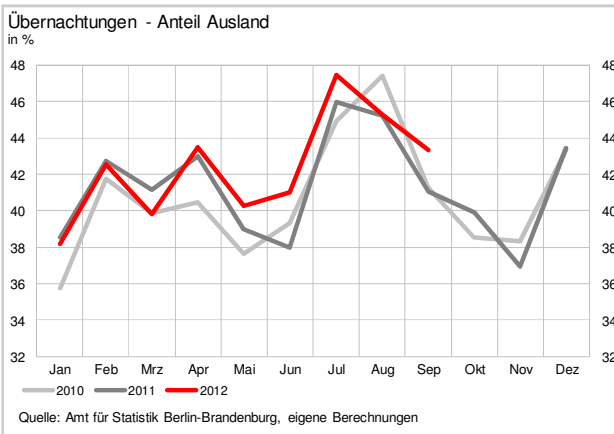
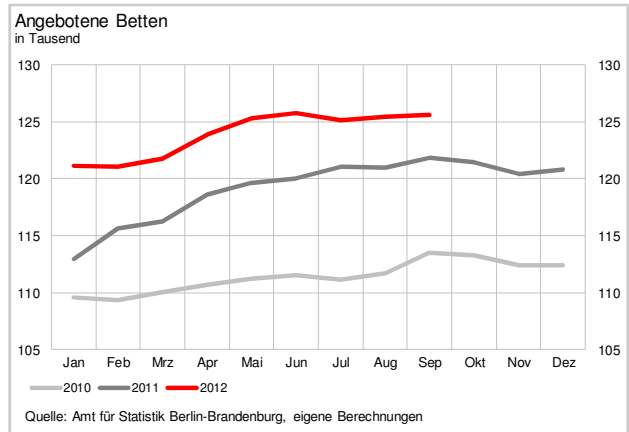
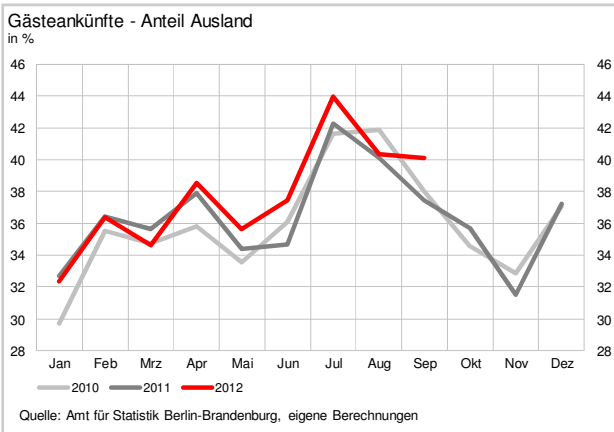
# Gastgewerbe



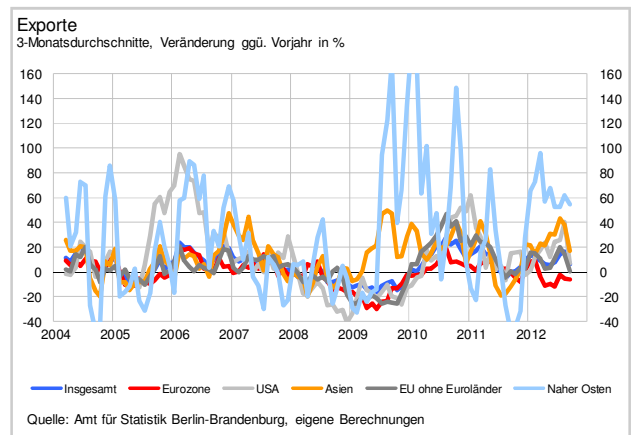
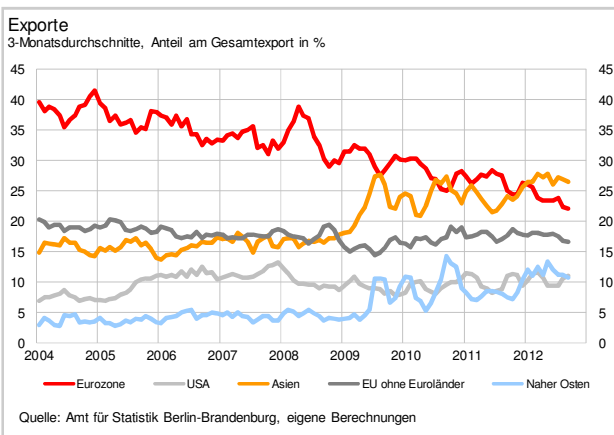
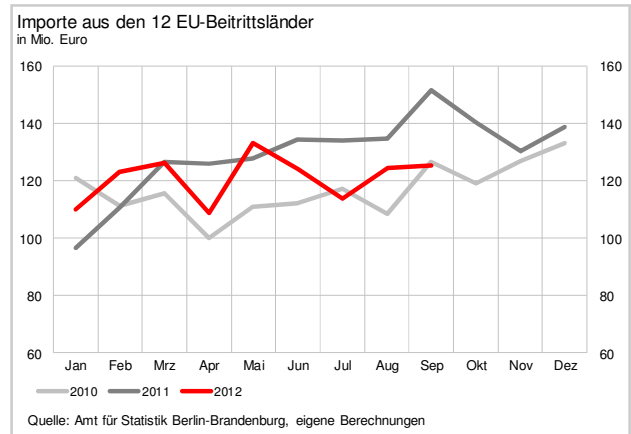
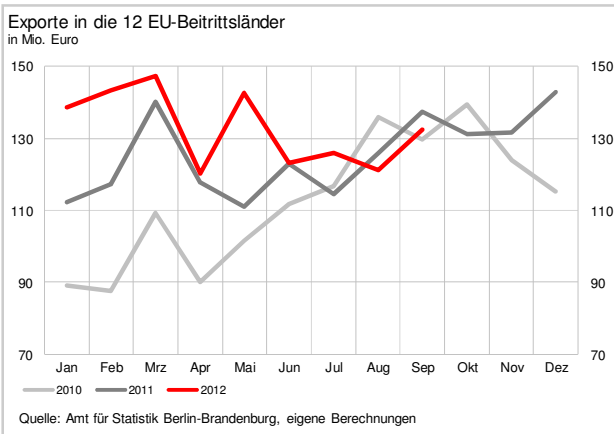
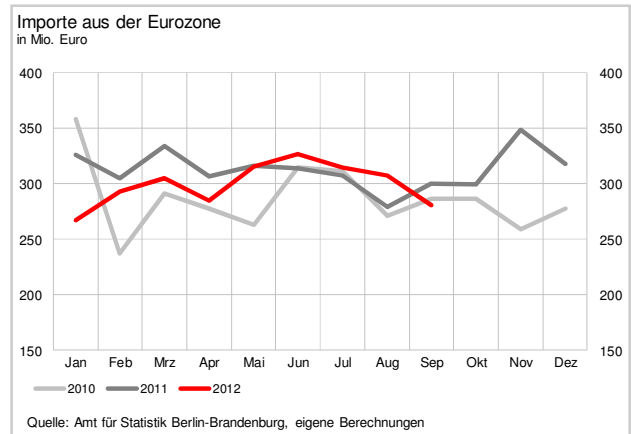
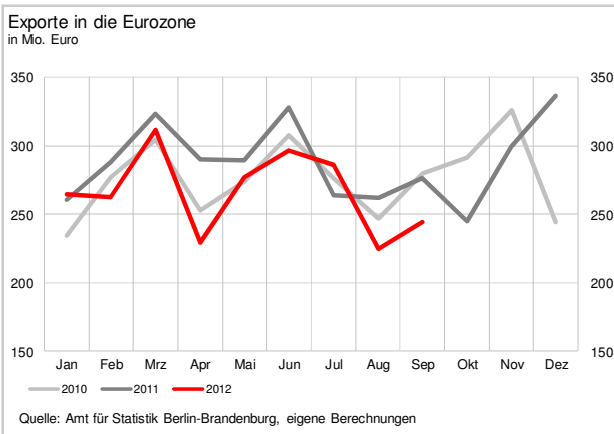
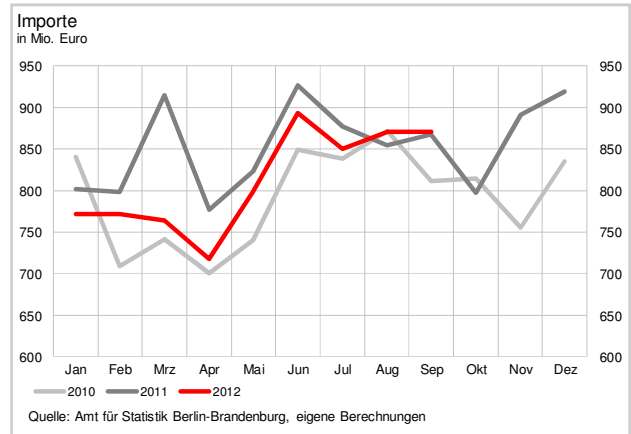
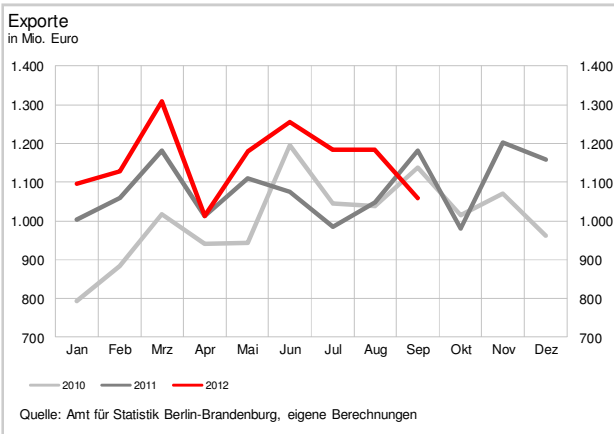
# Tourismus



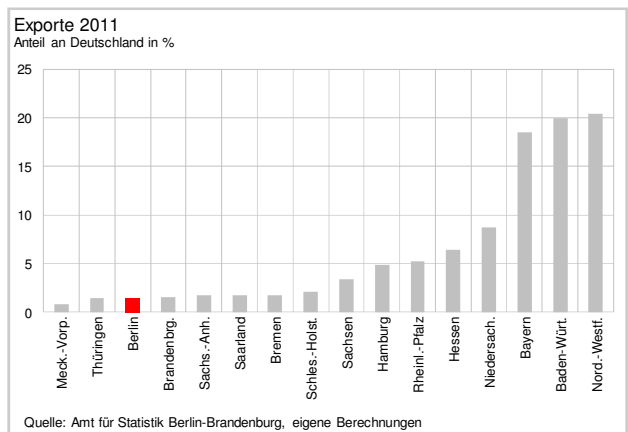
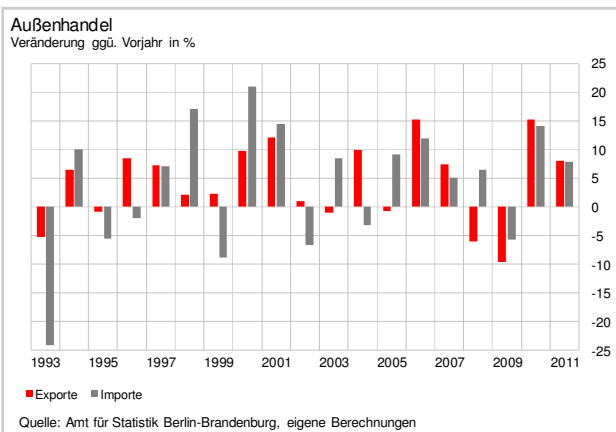
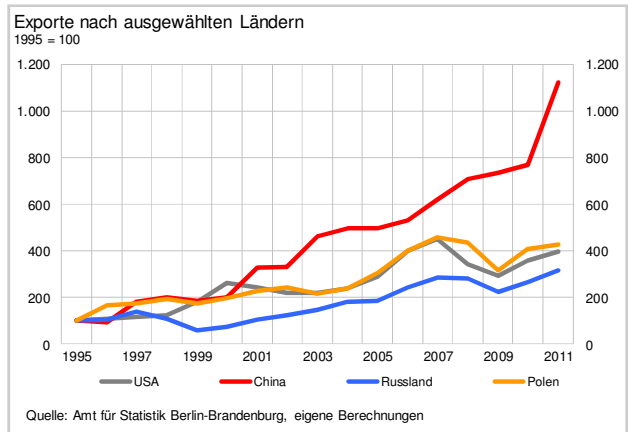
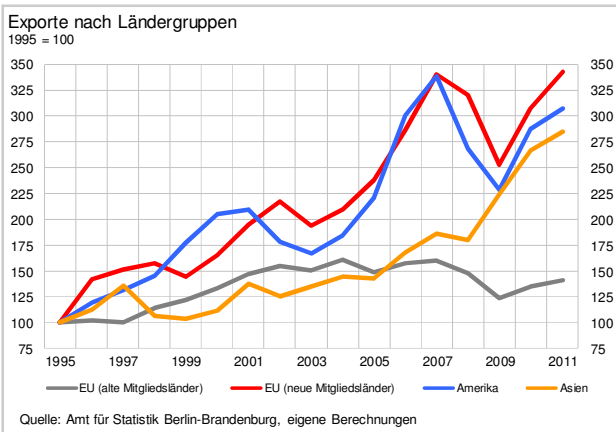
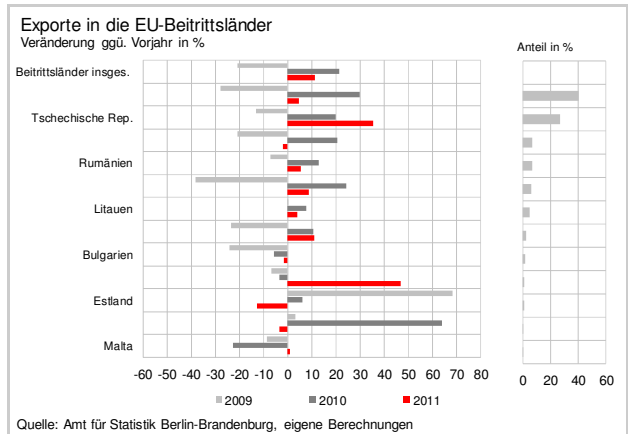
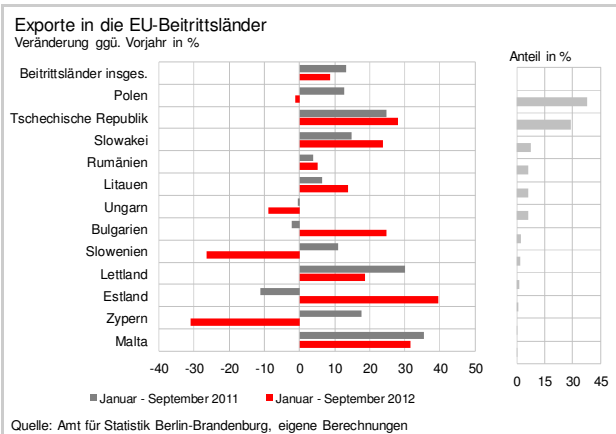
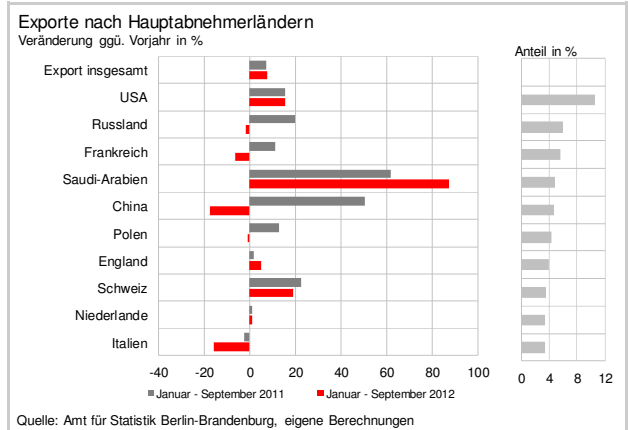
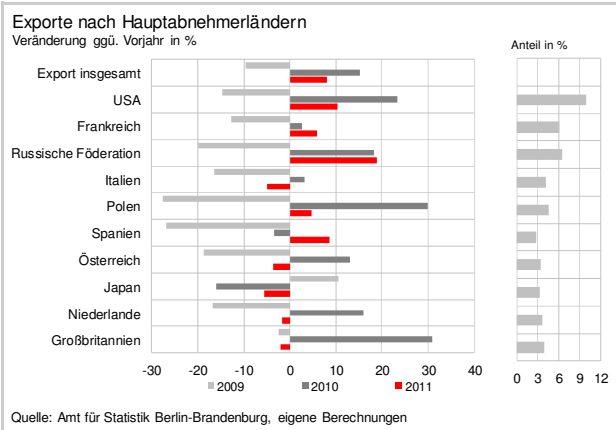
# Tourismus



# Ein- und Ausfuhr



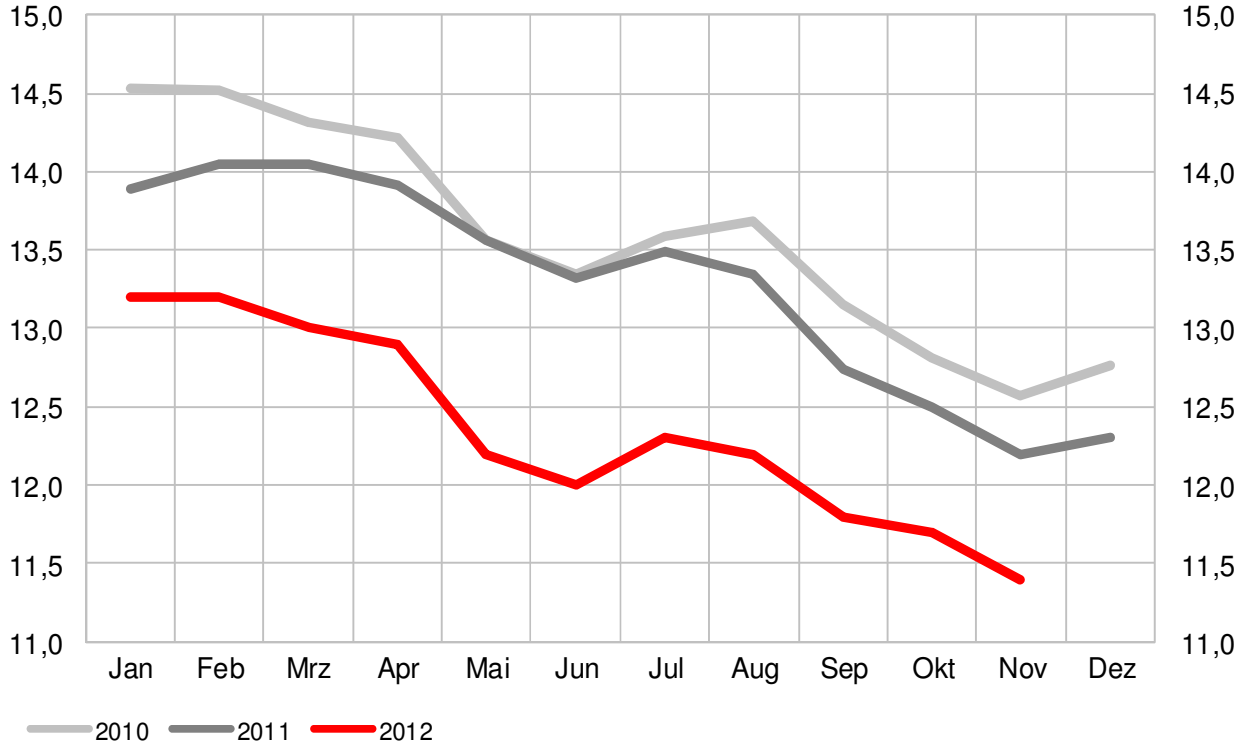
# Ein- und Ausfuhr



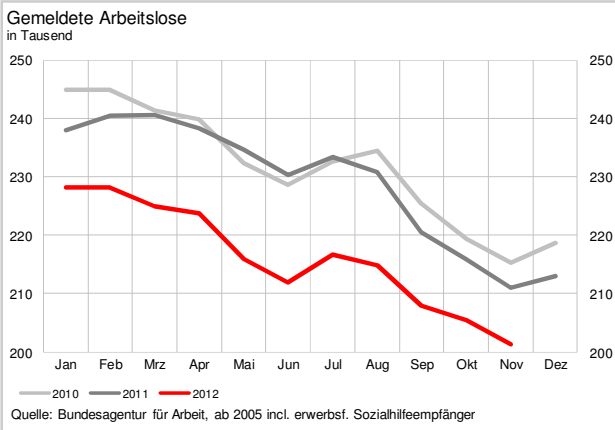
# Arbeitsmarkt

## Arbeitslosenquote

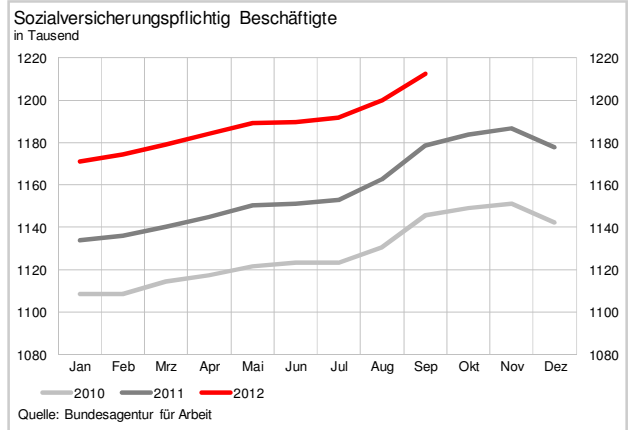
in %



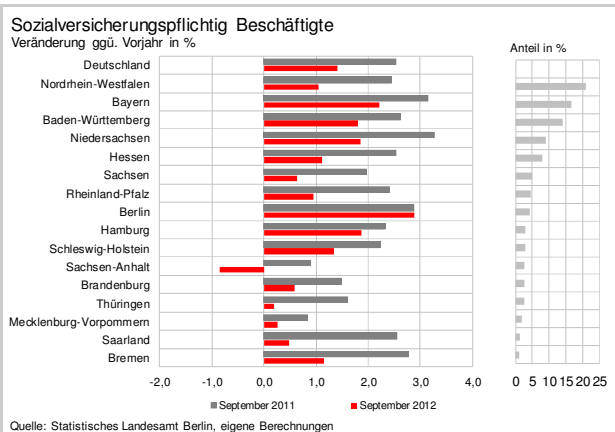
Quelle: Bundesagentur für Arbeit, ab 2005 incl. erwerbsf. Sozialhilfeempfänger



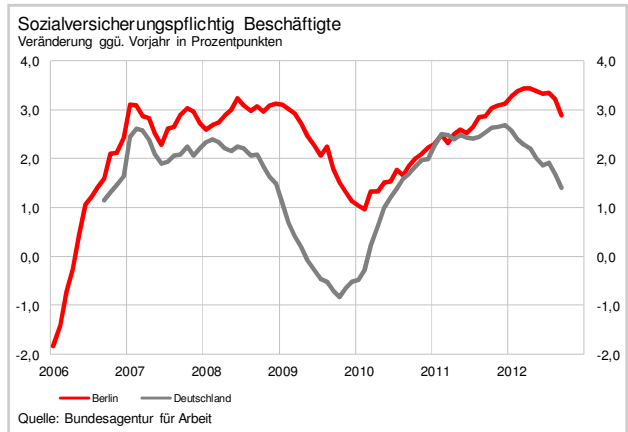
Quelle: Bundesagentur für Arbeit, ab 2005 incl. erwerbsf. Sozialhilfeempfänger



Quelle: Bundesagentur für Arbeit



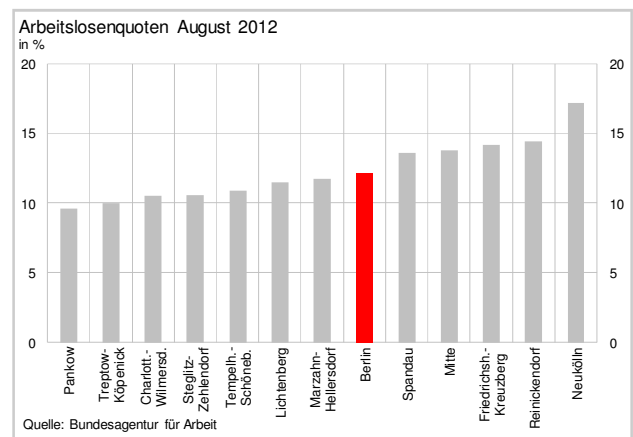
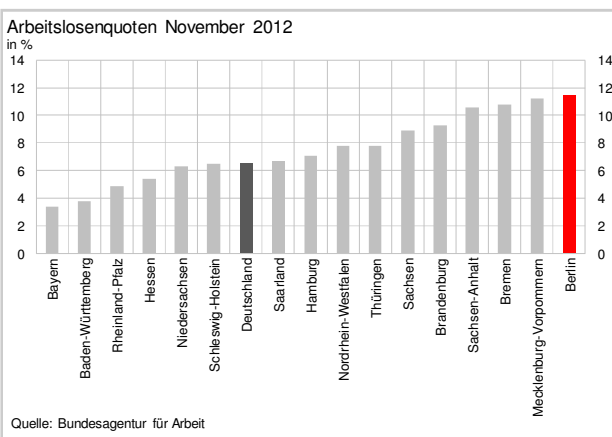
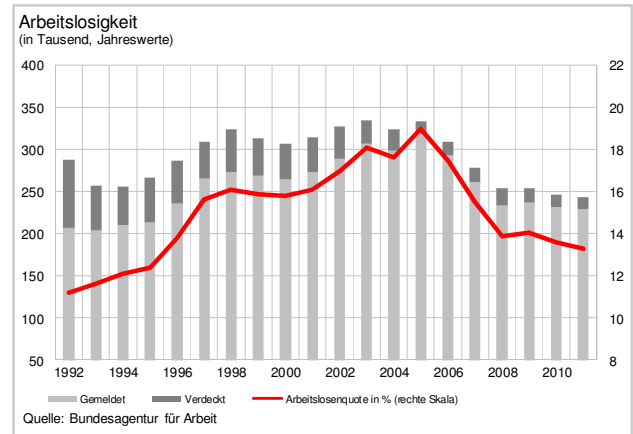
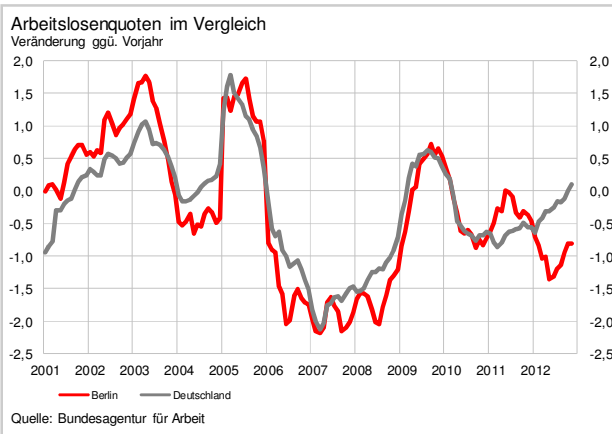
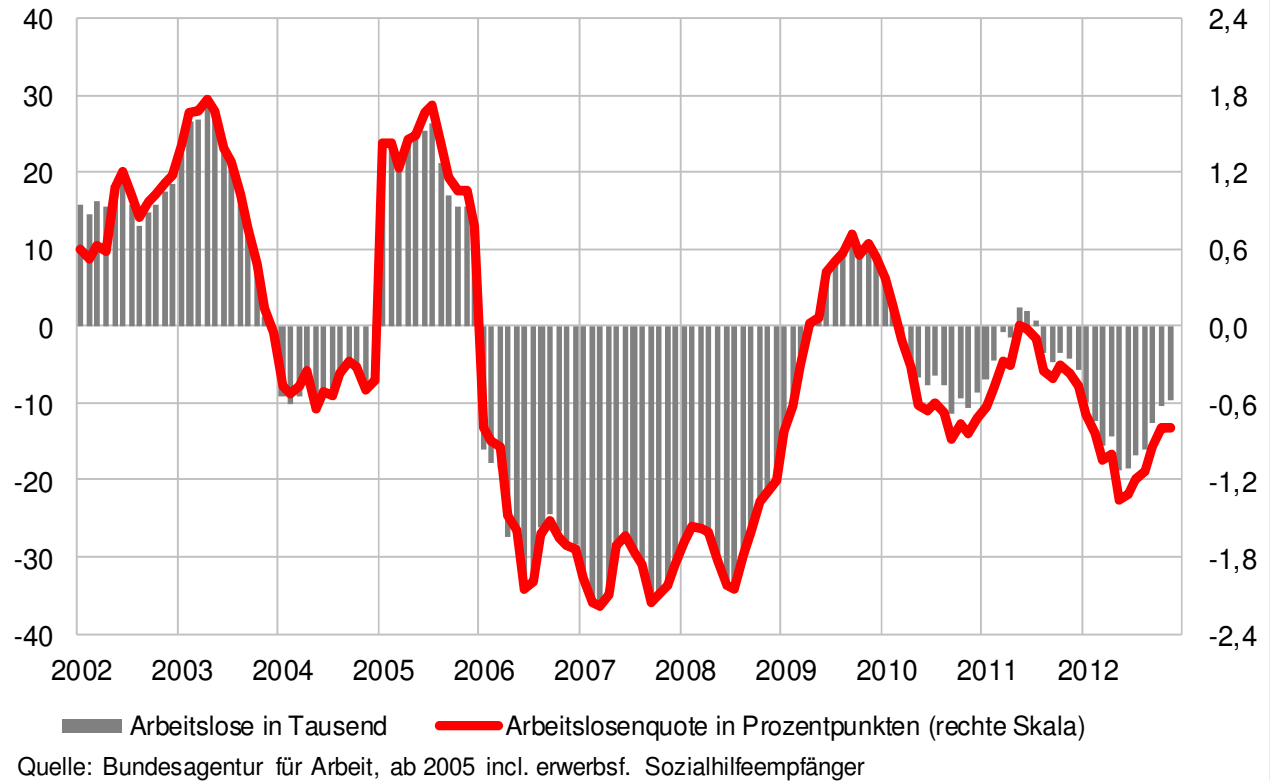
Quelle: Statistisches Landesamt Berlin, eigene Berechnungen



Quelle: Bundesagentur für Arbeit

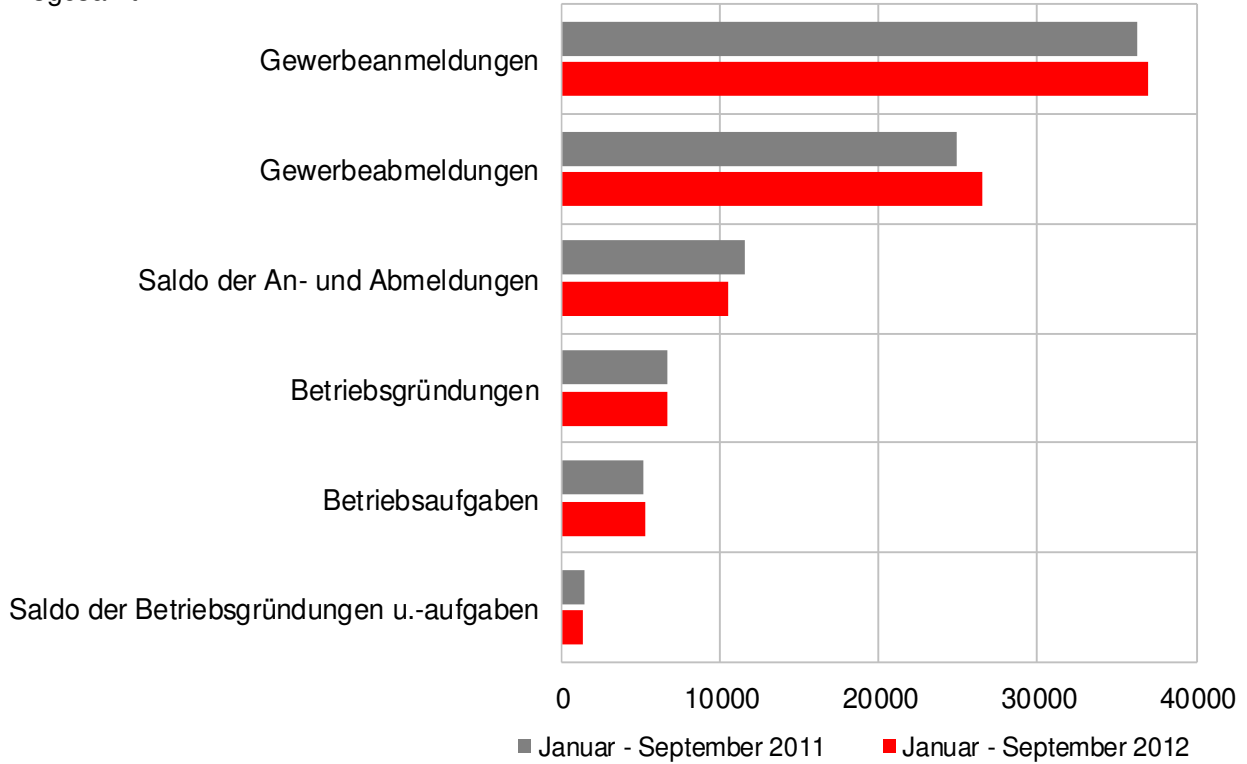
# Arbeitsmarkt

## Veränderung der Arbeitslosigkeit (ggü. Vorjahresmonat)

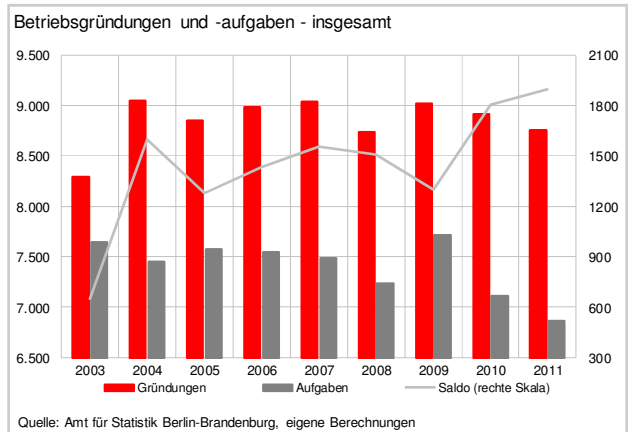
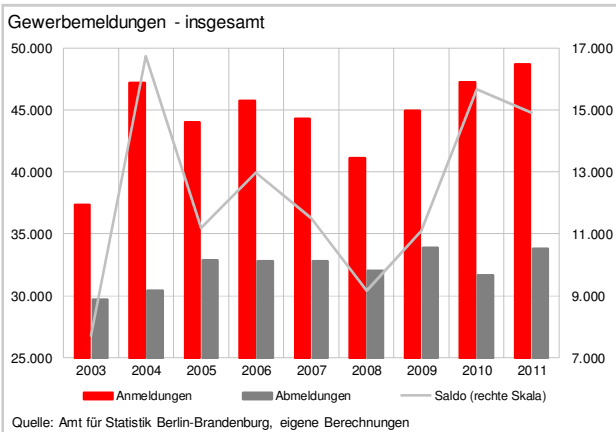
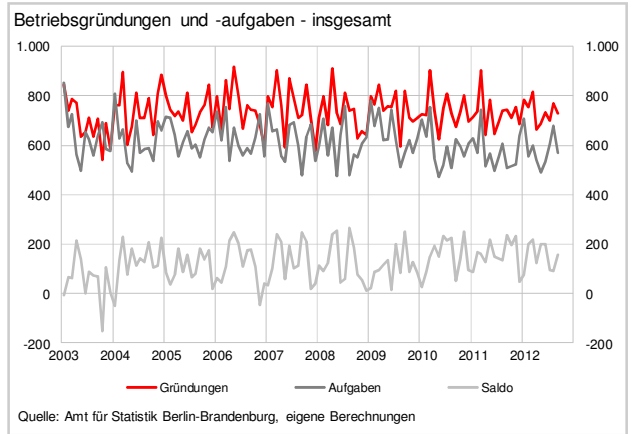
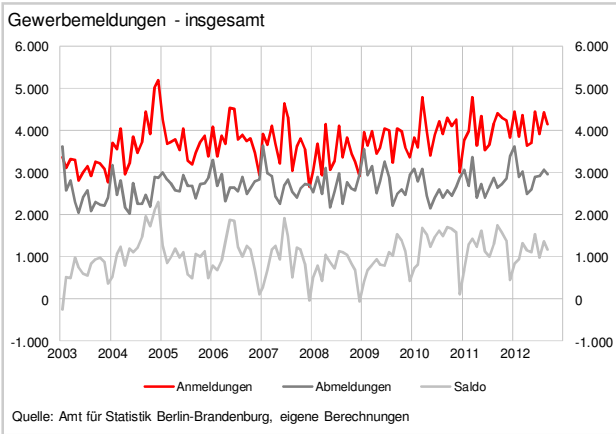


# Gründungsgeschehen

## Trends der Gewerbeanmeldungen insgesamt

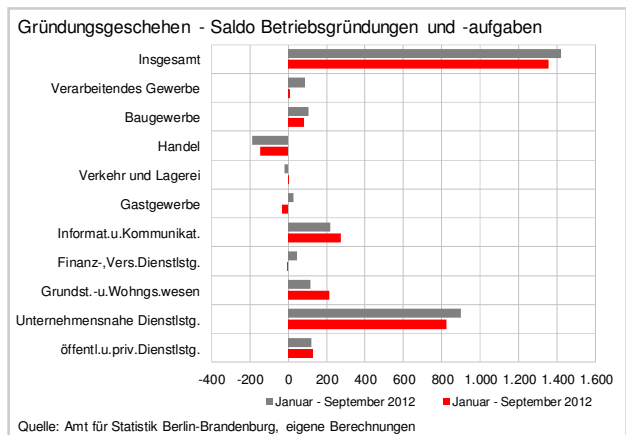
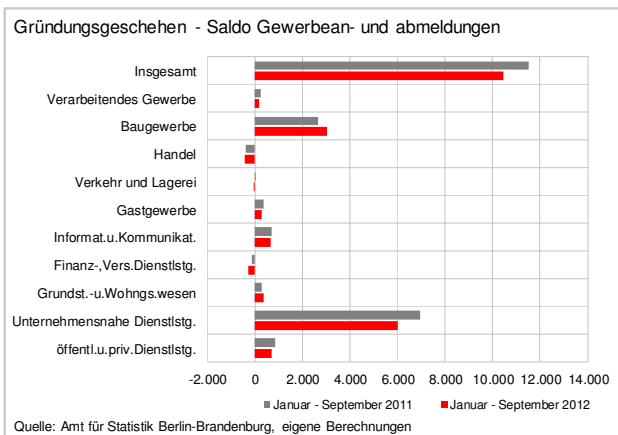
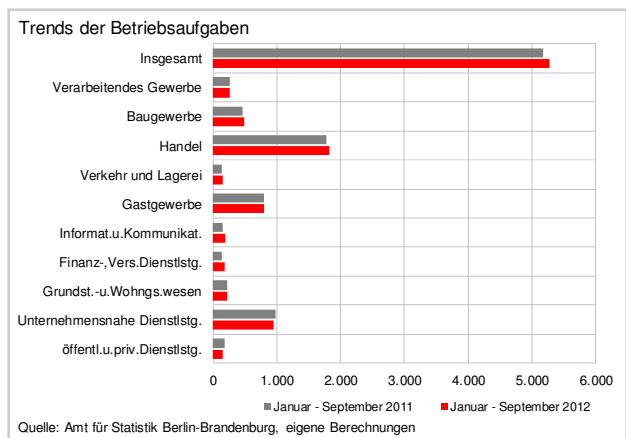
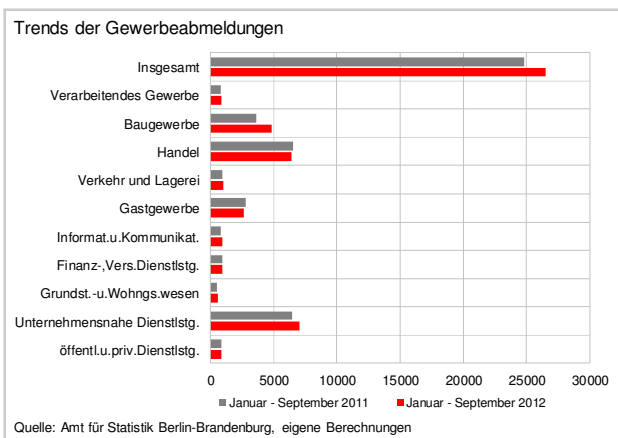
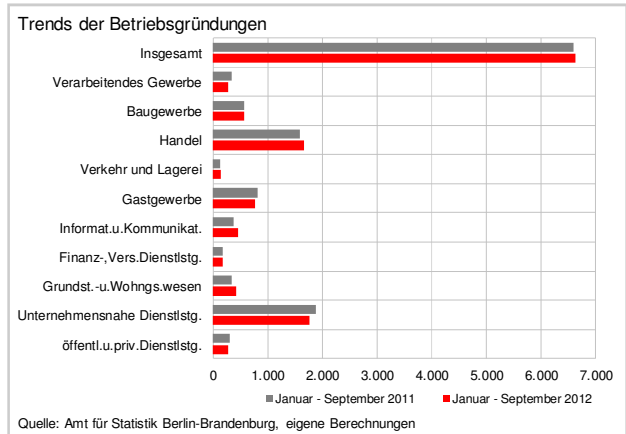
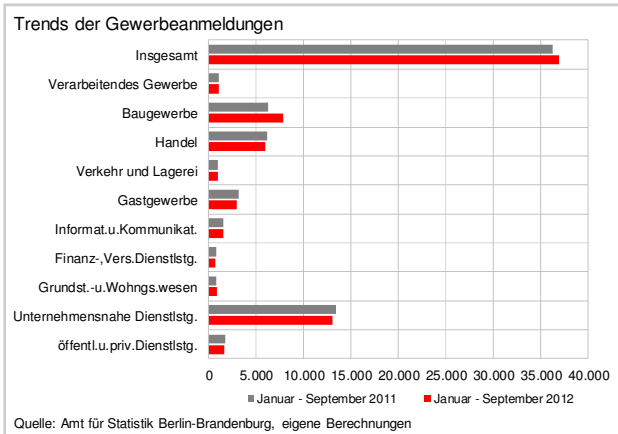


Quelle: Amt für Statistik Berlin-Brandenburg, eigene Berechnungen



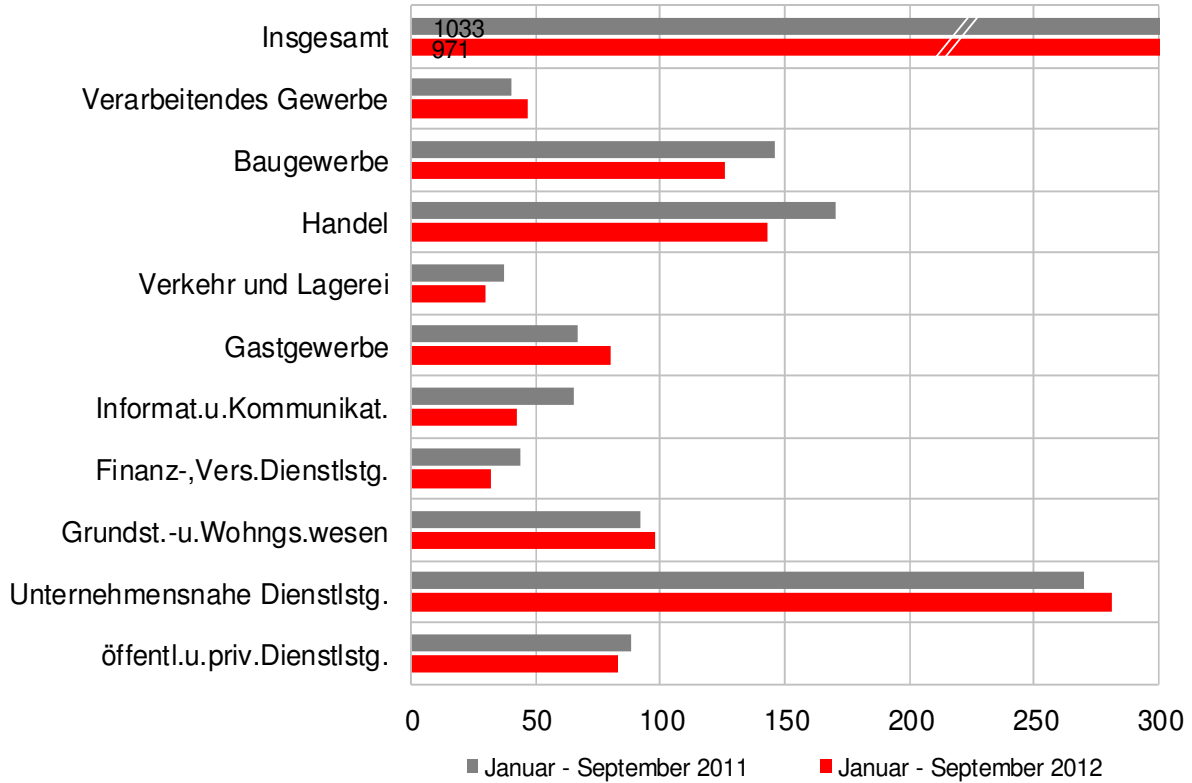


# Gründungsgeschehen

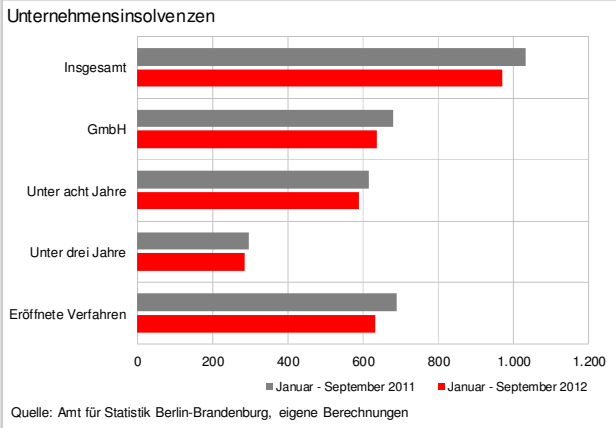


# Insolvenzen

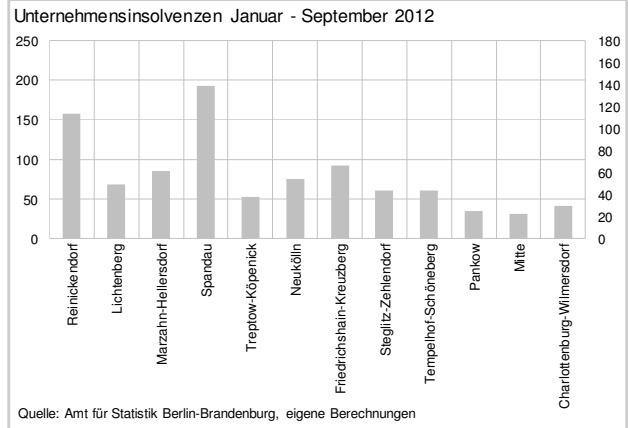
## Unternehmensinsolvenzen



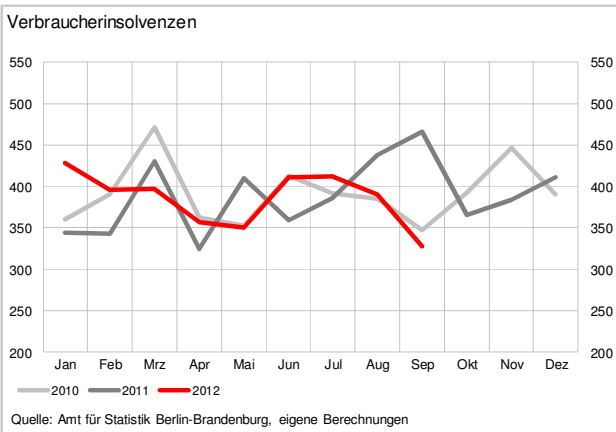
Quelle: Amt für Statistik Berlin-Brandenburg, eigene Berechnungen



Quelle: Amt für Statistik Berlin-Brandenburg, eigene Berechnungen

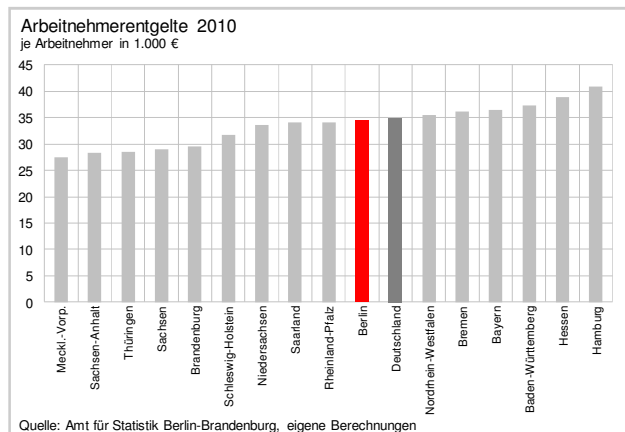
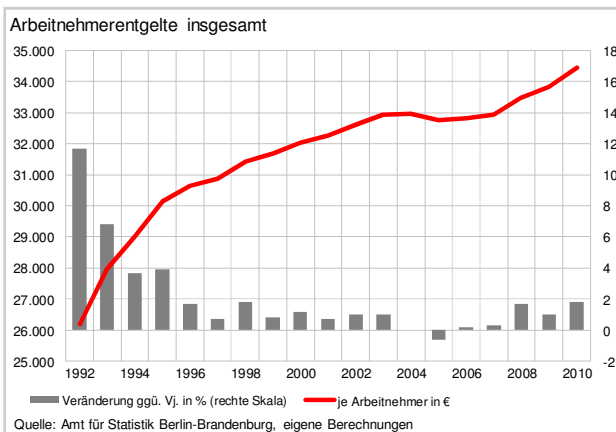
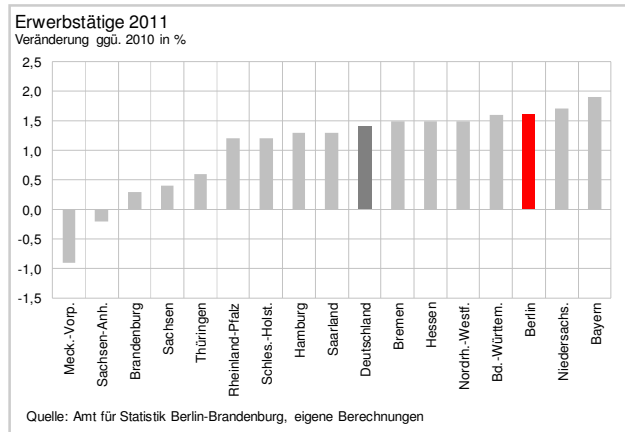
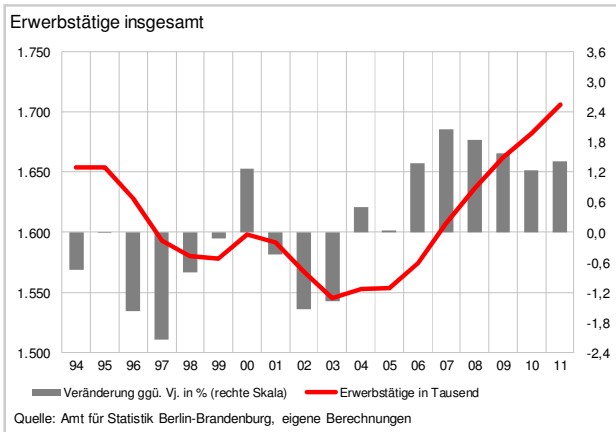
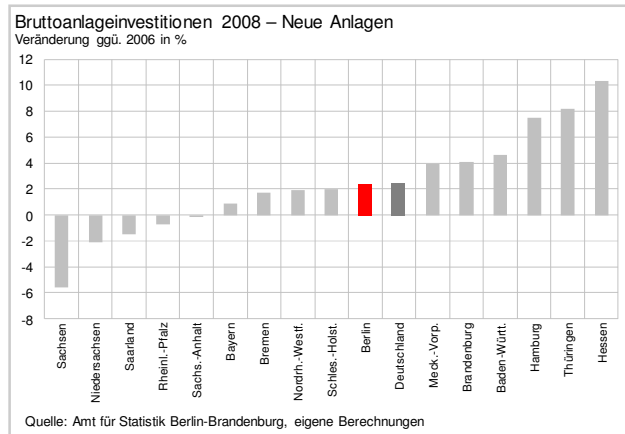
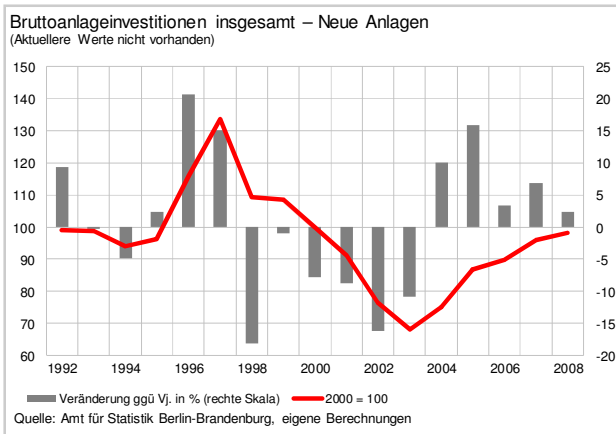
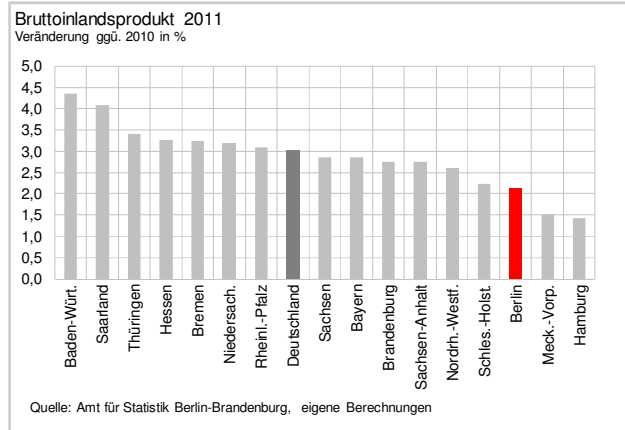
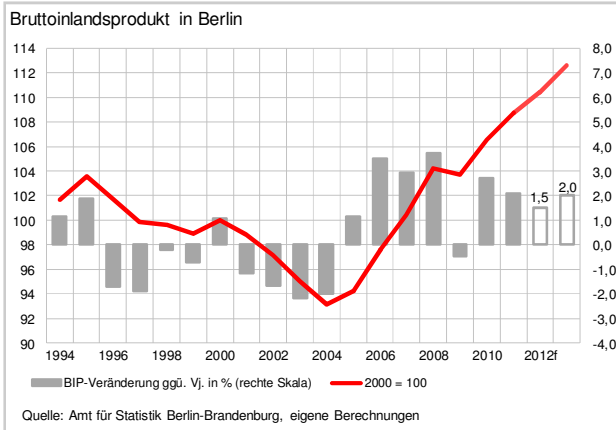


Quelle: Amt für Statistik Berlin-Brandenburg, eigene Berechnungen



Quelle: Amt für Statistik Berlin-Brandenburg, eigene Berechnungen

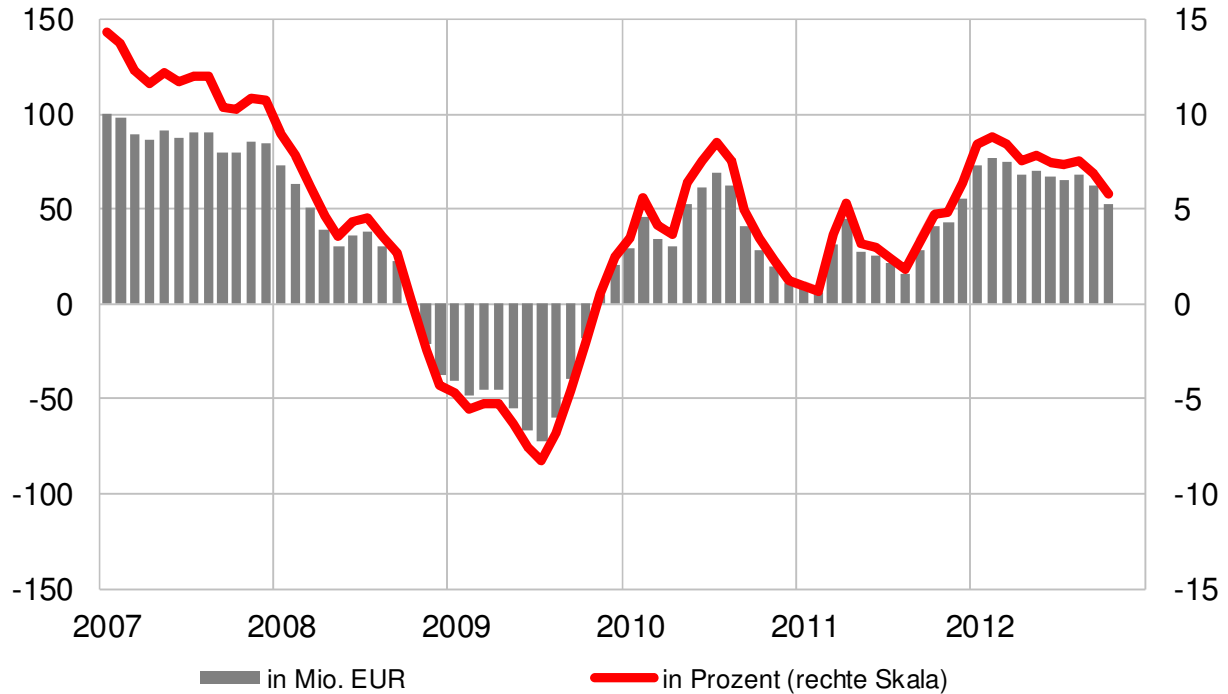
# Wirtschaftsstruktur



# Steuereinnahmen

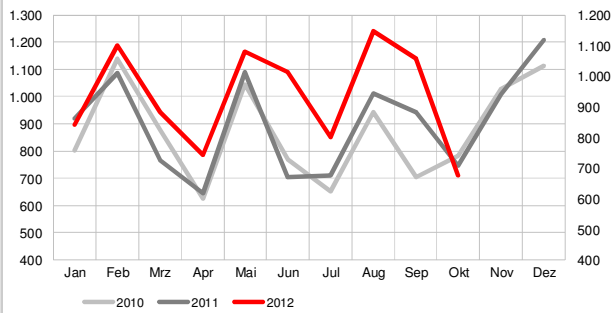
## Steuereinnahmen insgesamt

gl. 12-Monatsdurchschnitt; Veränderung ggü. Vorjahresmonat  
(monatliche Einnahmen ohne Länderfinanzausgleich und allg. Bundesergänzungszuweisung)



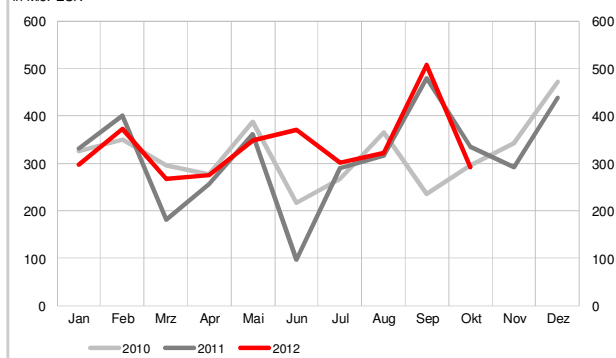
Quelle: Senatsverwaltung für Finanzen; eigene Berechnung

Steuereinnahmen des Landes Berlin  
in Mio. EUR  
(monatliche Einnahmen ohne Länderfinanzausgleich und allg. Bundesergänzungszuweisung)



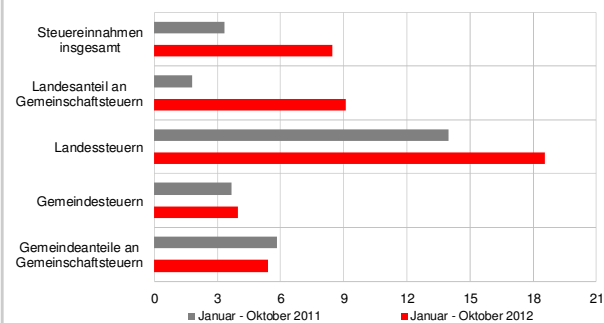
Quelle: Senatsverwaltung für Finanzen; eigene Berechnungen

Umsatzsteuer  
in Mio. EUR



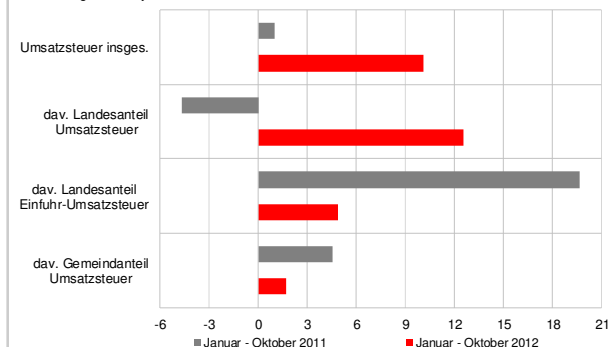
Quelle: Senatsverwaltung für Finanzen; eigene Berechnungen

Steuereinkünfte  
Veränderung zum Vorjahreszeitraum in %  
(monatliche Einnahmen ohne Länderfinanzausgleich und allg. Bundesergänzungszuweisung)



Quelle: Senatsverwaltung für Finanzen; eigene Berechnungen

Umsatzsteuer  
Veränderung zum Vorjahreszeitraum in %

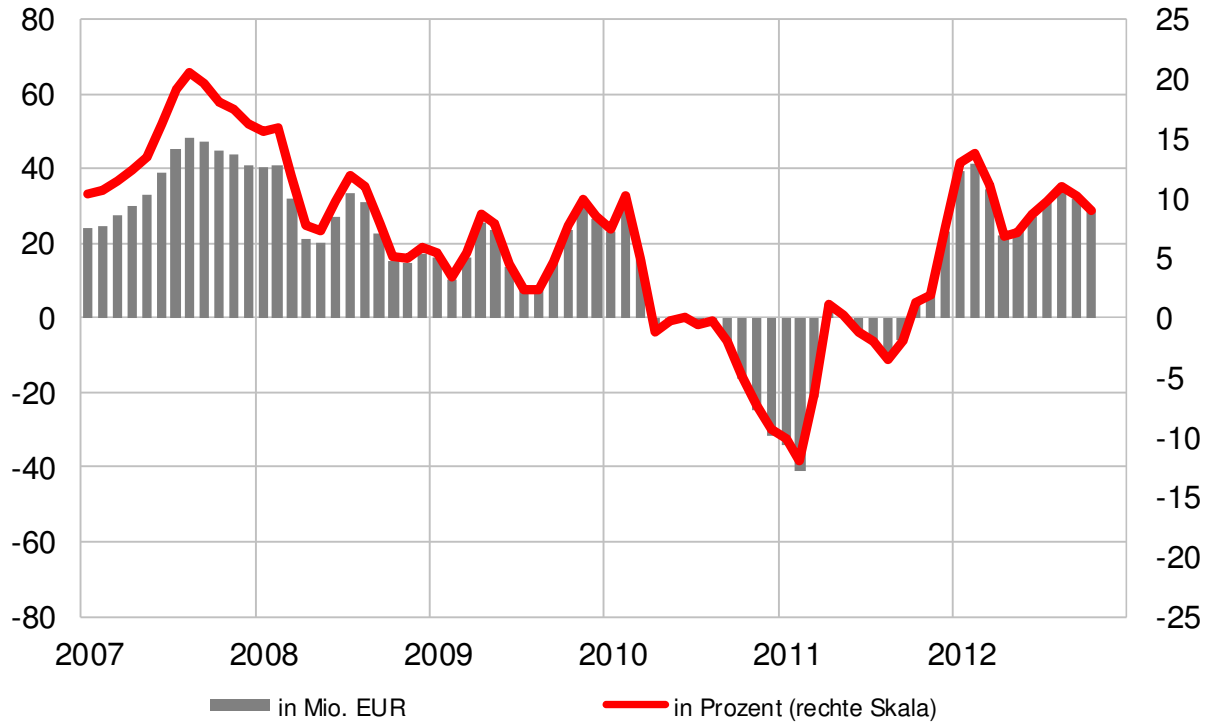


Quelle: Senatsverwaltung für Finanzen; eigene Berechnungen

# Steuereinnahmen

## Umsatzsteuer

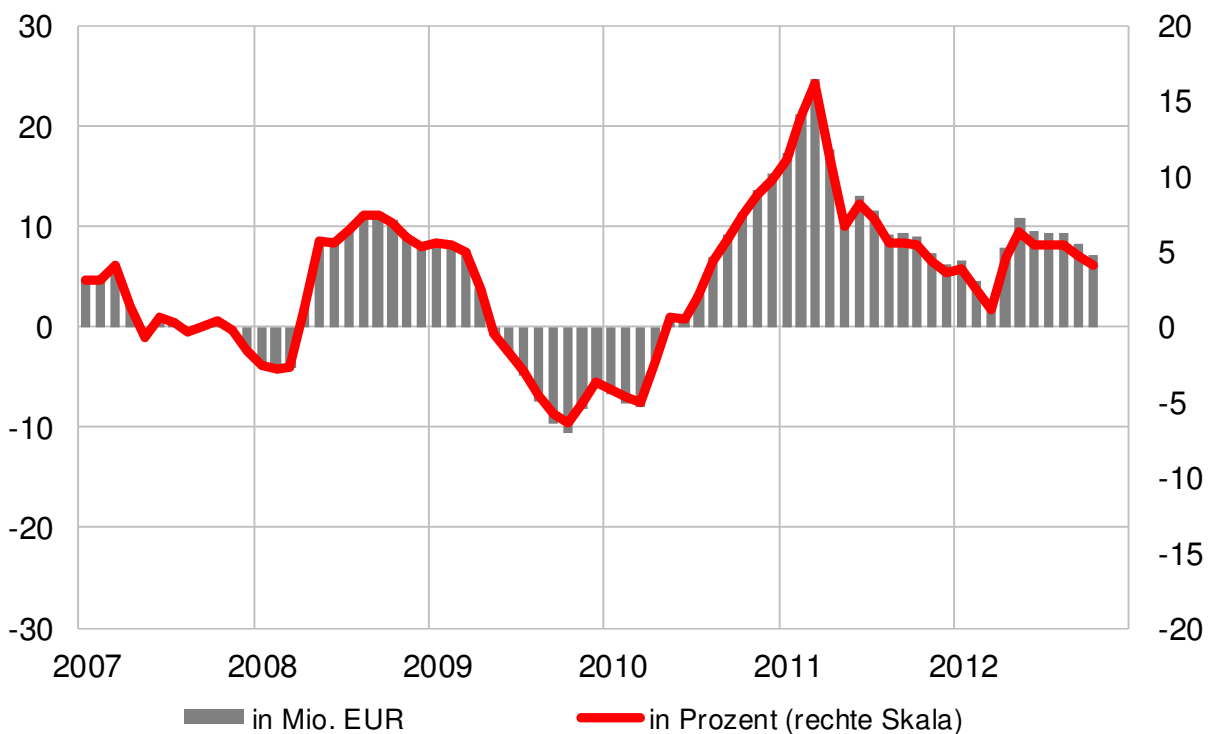
gl. 12-Monatsdurchschnitt; Veränderung ggü. Vorjahresmonat



Quelle: Senatsverwaltung für Finanzen; eigene Berechnung

## Lohnsteuer

gl. 12-Monatsdurchschnitt; Veränderung ggü. Vorjahr

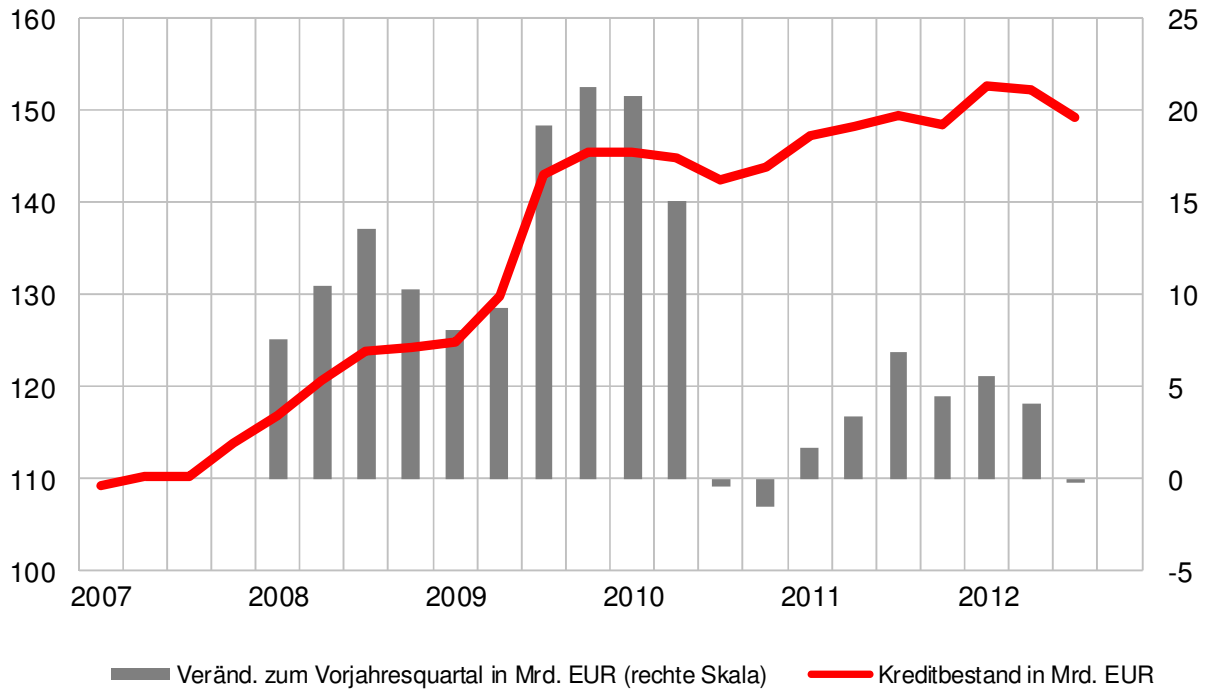


Quelle: Senatsverwaltung für Finanzen; eigene Berechnung

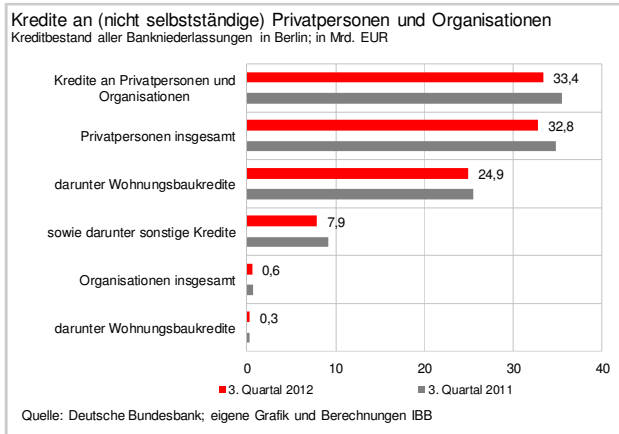
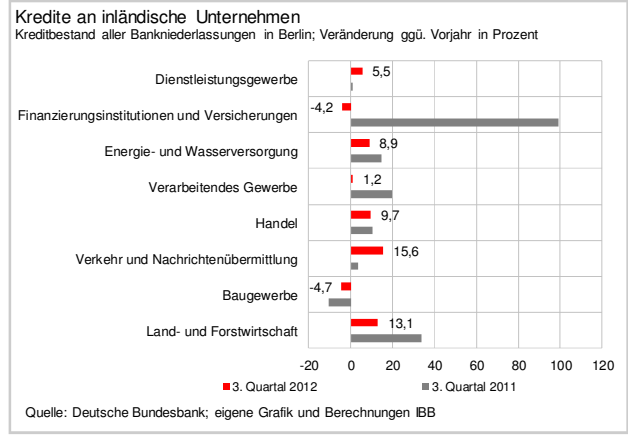
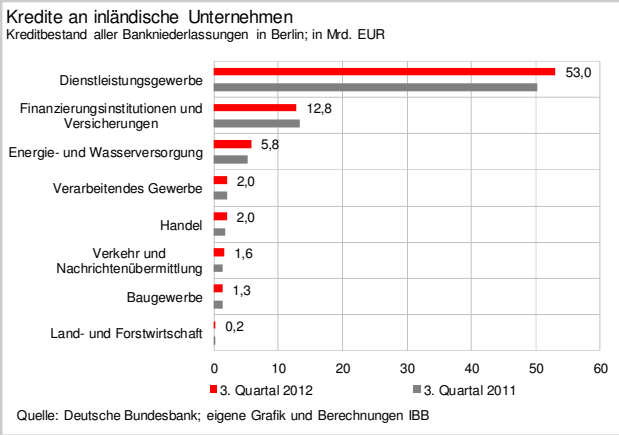
Kredite

Kredite insgesamt

Kreditbestand aller Bankniederlassungen in Berlin



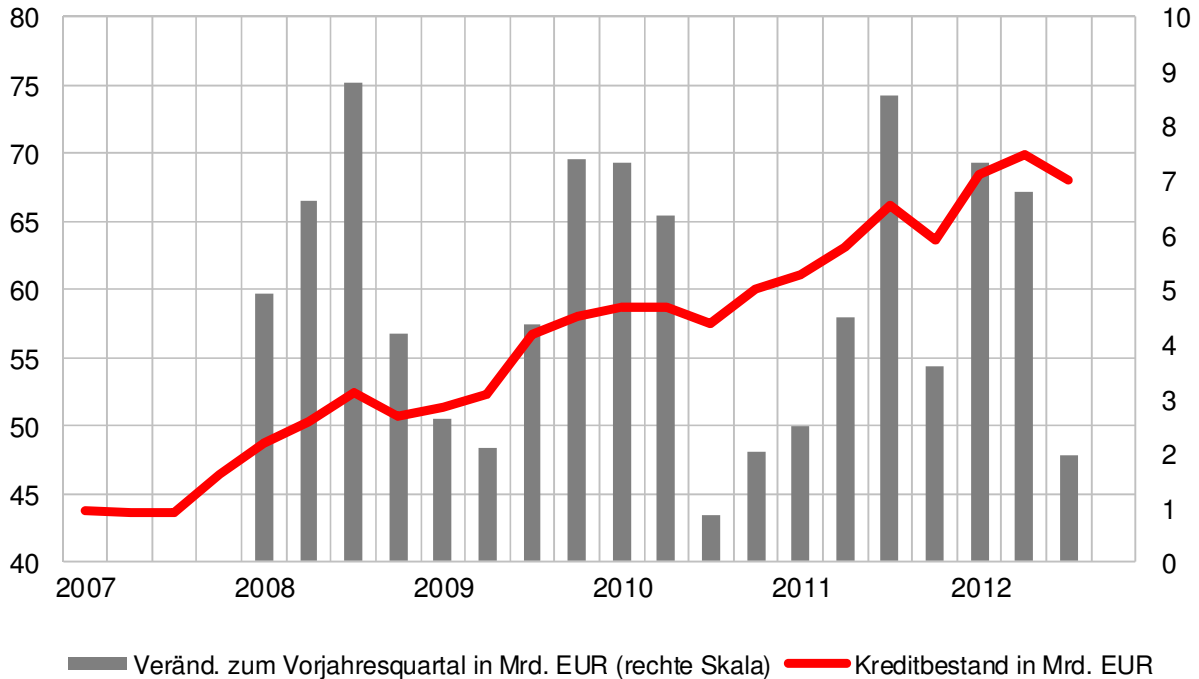
Quelle: Deutsche Bundesbank, eigene Berechnungen



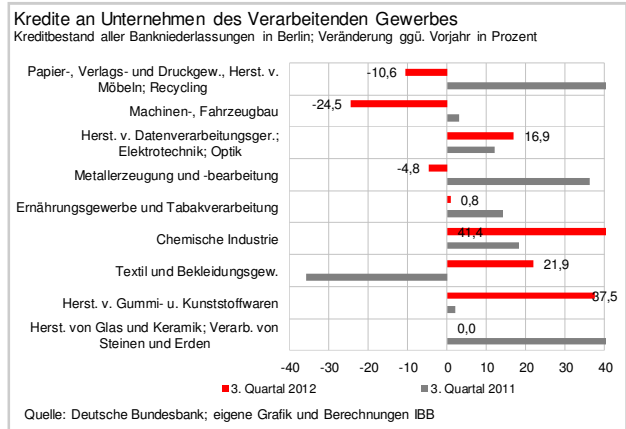
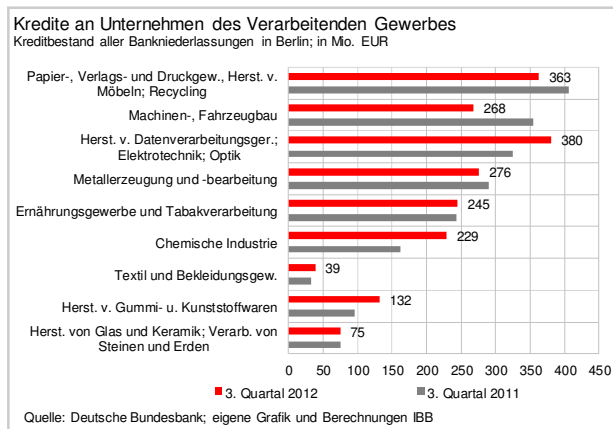
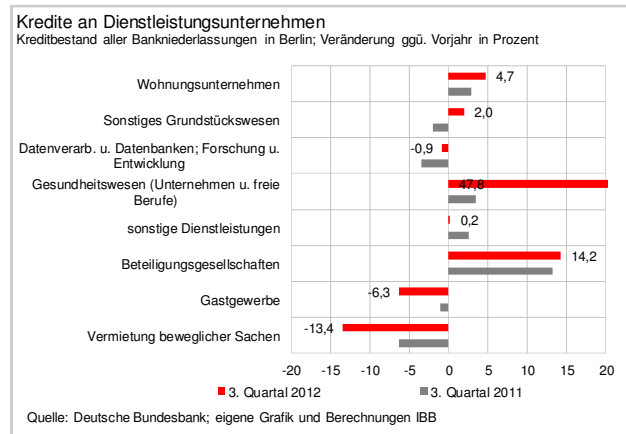
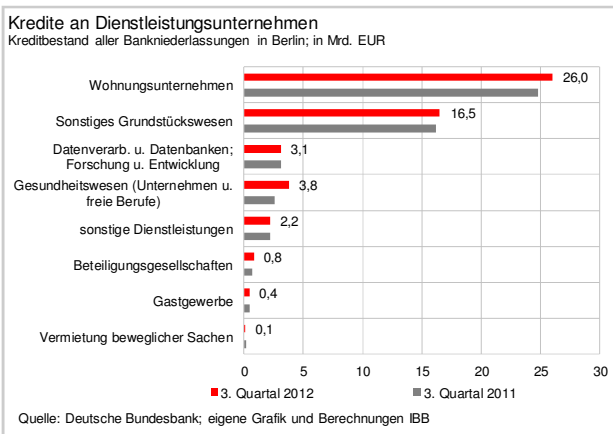
# Kredite

## Kredite an Unternehmen

Kreditbestand aller Bankniederlassungen in Berlin



Quelle: Deutsche Bundesbank, eigene Berechnungen



*Herausgeber:*  
Investitionsbank Berlin  
Volkswirtschaft

Bundesallee 210  
10719 Berlin  
volkswirtschaft@ibb.de

Verfasser:  
Hartmut Mertens  
Telefon: 030/2125-4738

Claus Pretzell  
Telefon 030/2125-4752

Verantwortlich:  
Hartmut Mertens

Weitere Publikationen unter  
[www.ibb.de/volkswirtschaft](http://www.ibb.de/volkswirtschaft)