

Berlin Wirtschaftliche Trends

17. Juni 2011

Inhalt

Konjunktur-Tendenzen	5
Industrie	6
Baugewerbe	12
Einzelhandel	16
Gastgewerbe	17
Tourismus	18
Ein- und Ausfuhr	20
Arbeitsmarkt	22
Gründungsgeschehen	24
Unternehmensinsolvenzen	26
Wirtschaftsstruktur	27

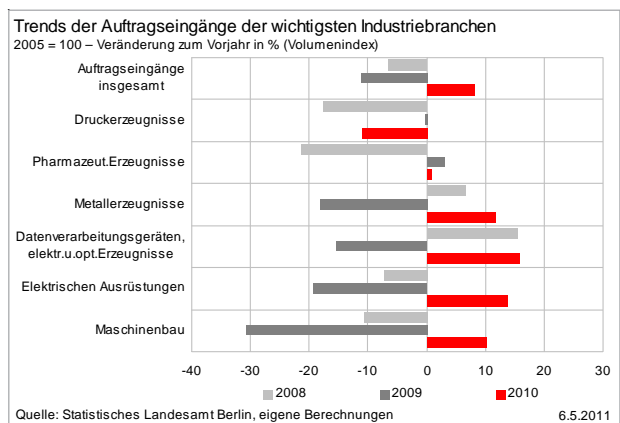
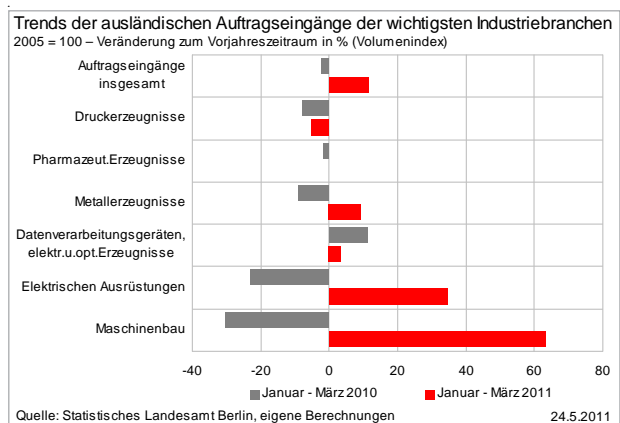
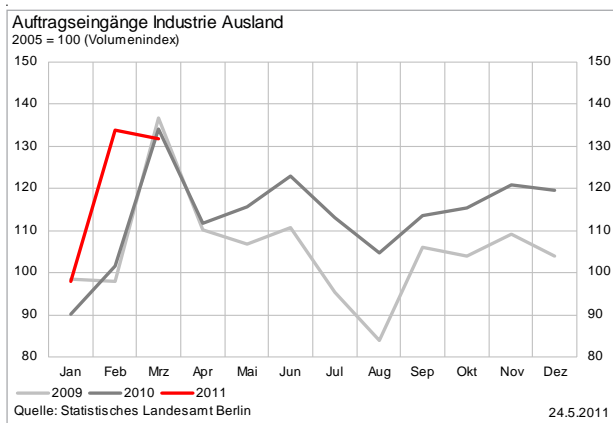
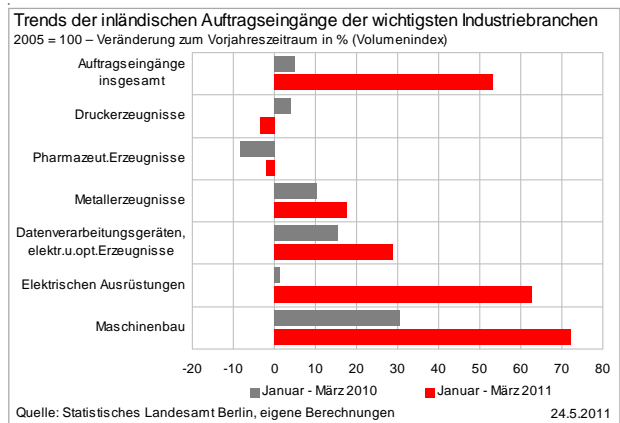
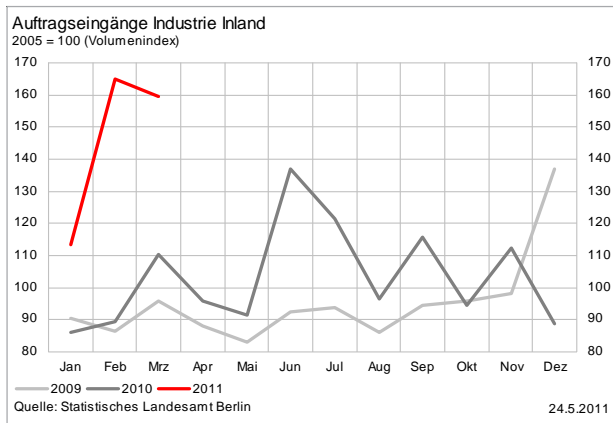
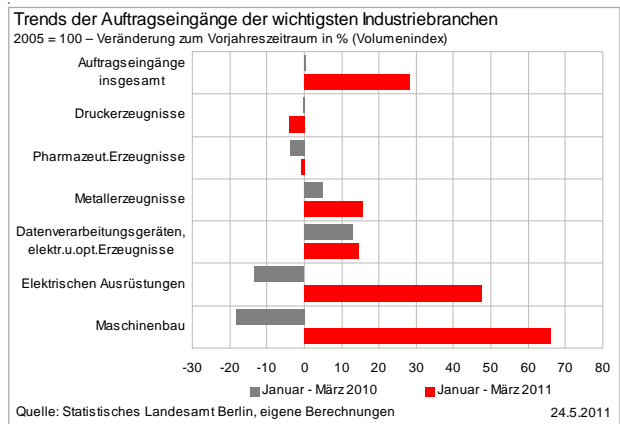
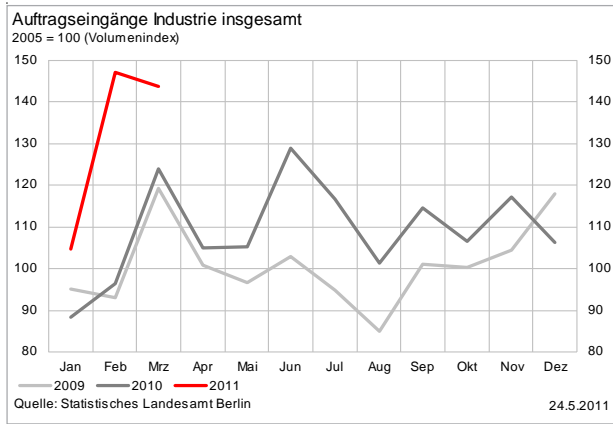
Konjunktur-Tendenzen

Merkmal	Veränderung zum Vorjahreszeitraum in %		
	Januar - März		
	2009	2010	2011
Auftragseingang			
Verarbeitendes Gewerbe	-	=	++
Bauhauptgewerbe	-	++	-
Gesamtumsatz			
Verarbeitendes Gewerbe	=	-	+
darunter: Nahrungs- und Futtermittel	+	--	+
Druckerzeugnisse	+	=	+
Pharmazeut.Erzeugnisse	++	=	-
Metallerzeugnisse	-	+	+
Datenverarb.geräte, elektr.u.opt.Erzg.	+	-	-
Elektrische Ausrüstungen	--	+	++
Maschinenbau	=	-	+
Bauhauptgewerbe	-	=	++
darunter: Wohnungsbau	--	-	++
Wirtschaftsbau	-	-	++
Öffentlicher Bau	--	++	-
Auslandsumsatz			
Verarbeitendes Gewerbe	+	=	+
darunter: Nahrungs- und Futtermittel	+	-	+
Druckerzeugnisse	n.v.	n.v.	n.v.
Pharmazeut.Erzeugnisse	n.v.	n.v.	-
Metallerzeugnisse	-	-	+
Datenverarb.geräte, elektr.u.opt.Erzg.	+	=	-
Elektrische Ausrüstungen	+	=	-
Maschinenbau	=	-	+
Beschäftigte			
Verarbeitendes Gewerbe	=	-	+
Bauhauptgewerbe	+	+	=

> 20 %: ++	> -20% < -2%: -
> 2% < 20%: +	< -20%: --
> -2% < 2%: =	kein Wert: n.v.

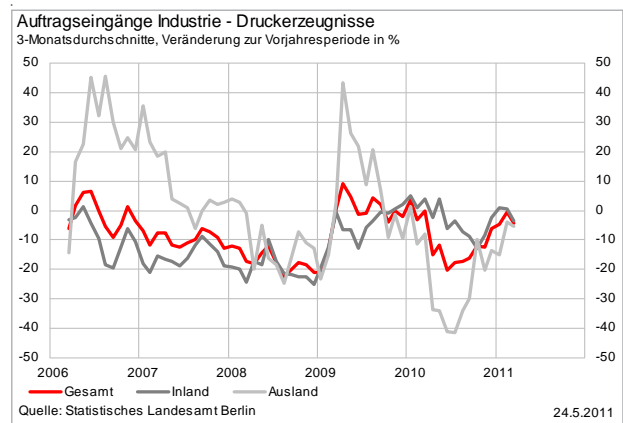
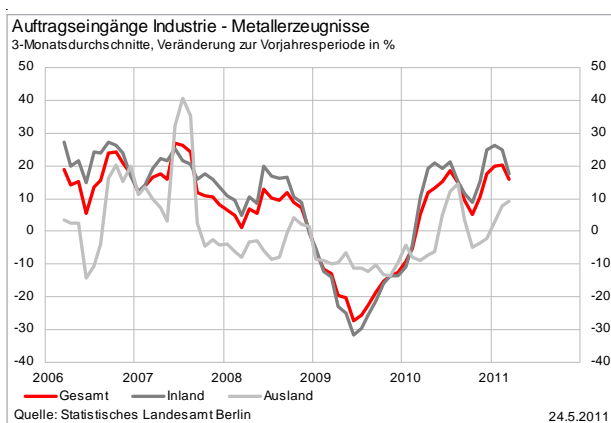
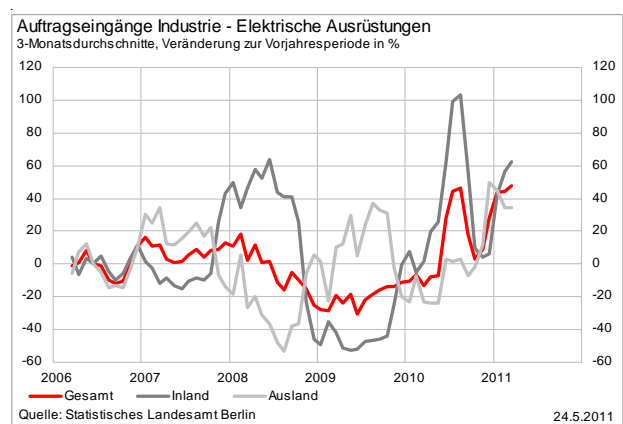
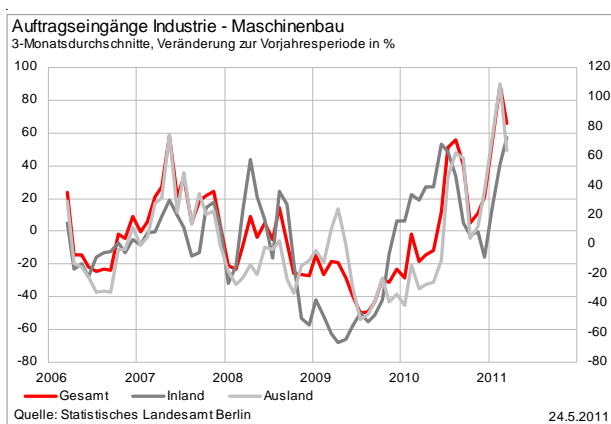
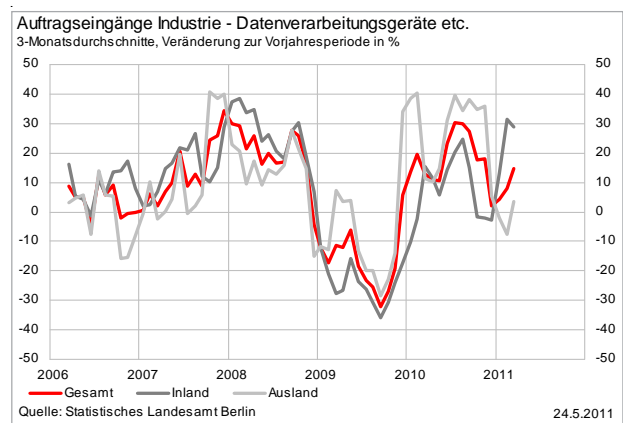
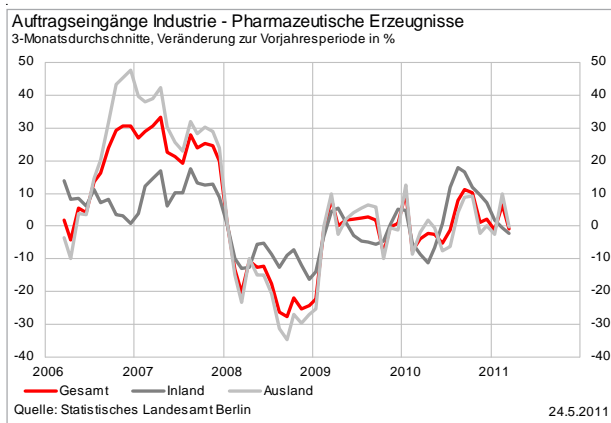
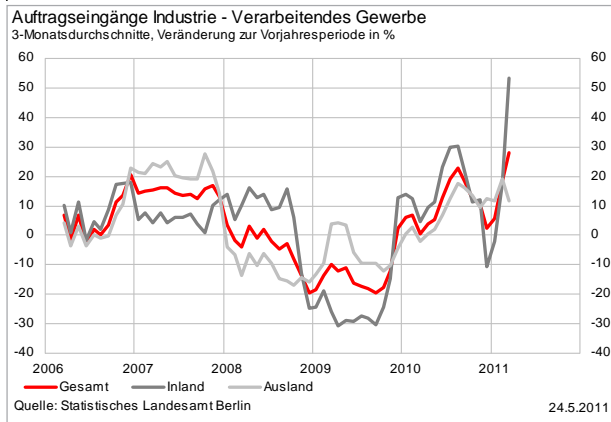
Industrie - Auftragseingänge

(Durch die Änderung der Systematik der Wirtschaftszweige ist ein Vergleich mit den Vorjahren nur eingeschränkt möglich)



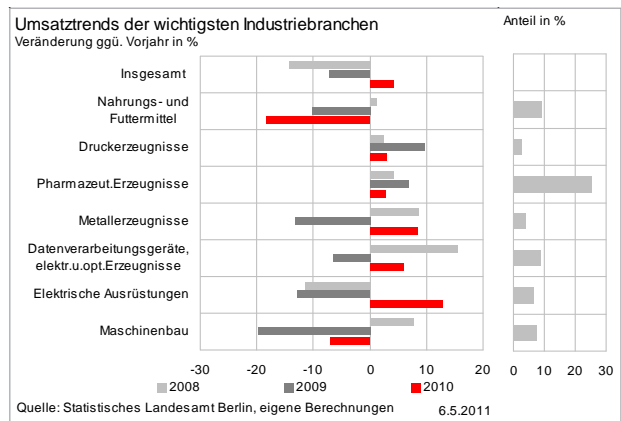
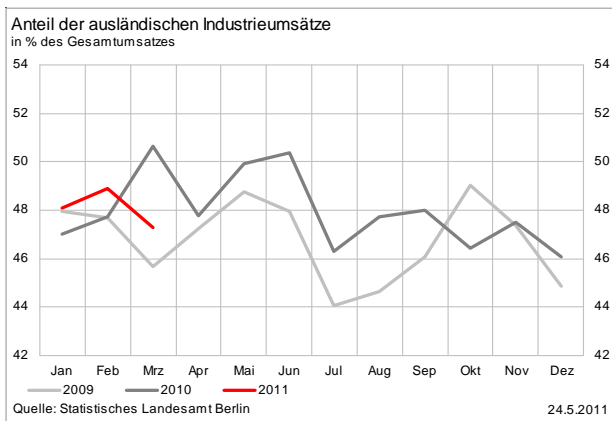
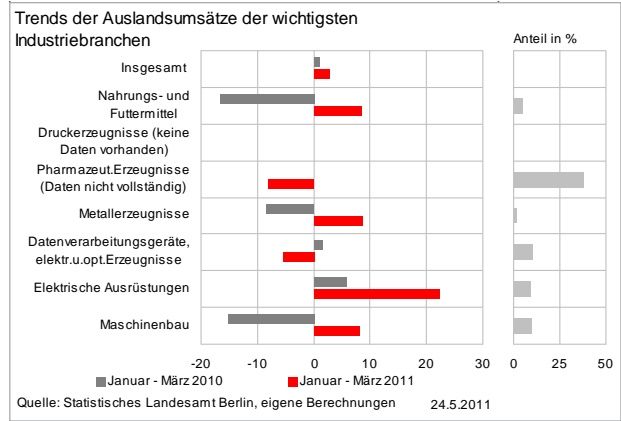
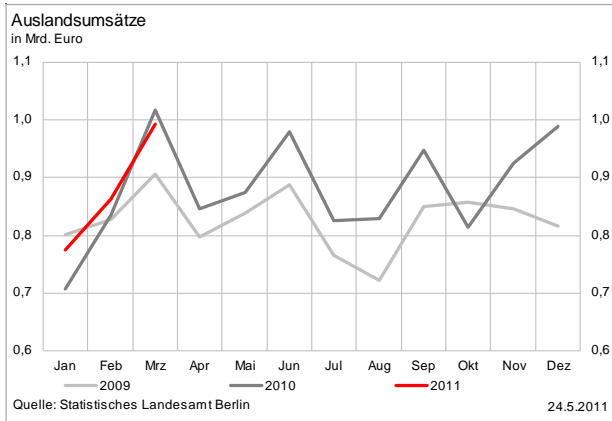
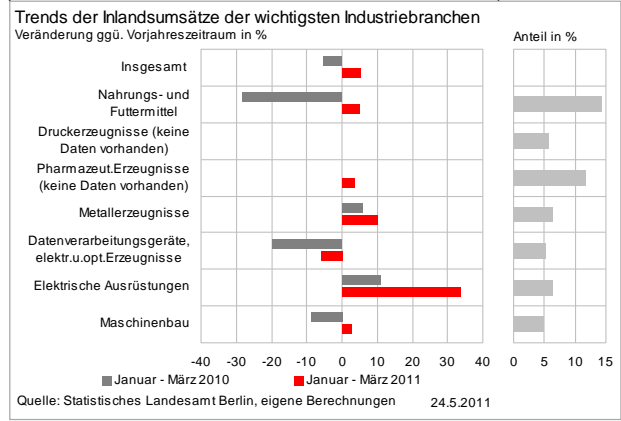
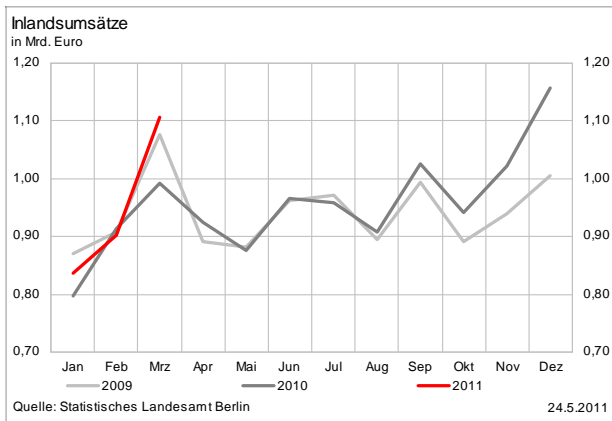
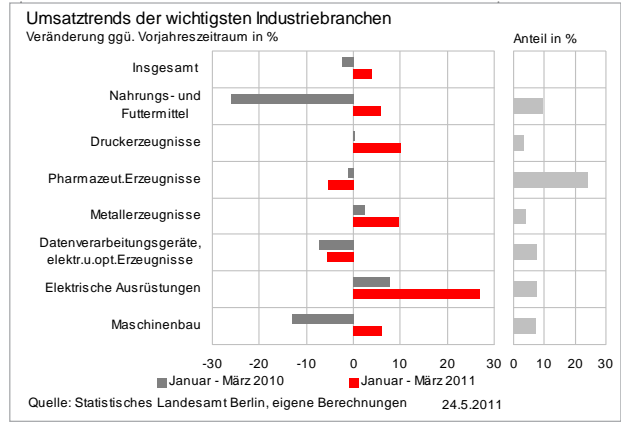
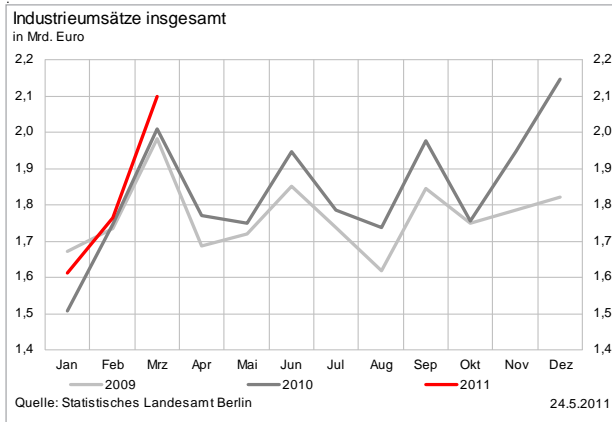
Industrie - Auftragseingänge

(Durch die Änderung der Systematik der Wirtschaftszweige ist ein Vergleich mit den Vorjahren nur eingeschränkt möglich)



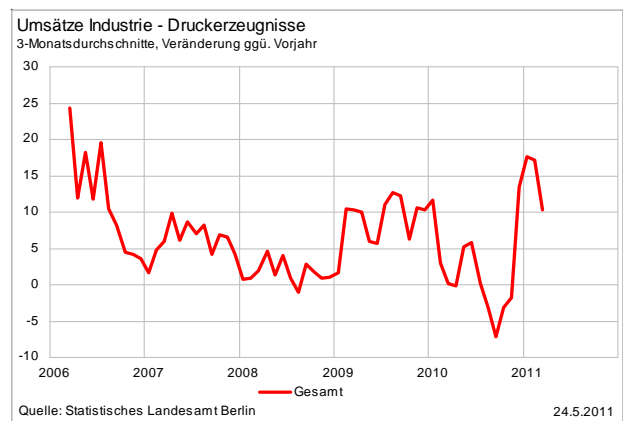
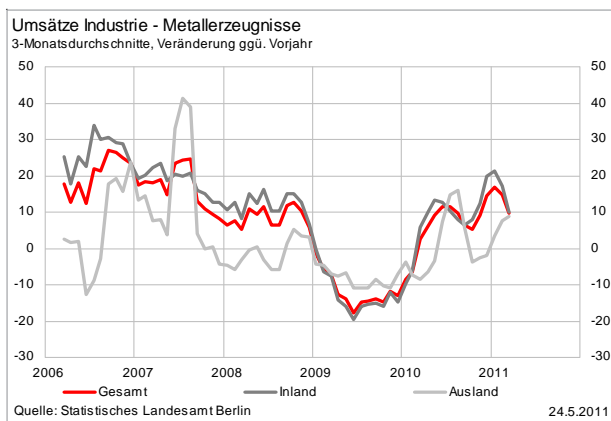
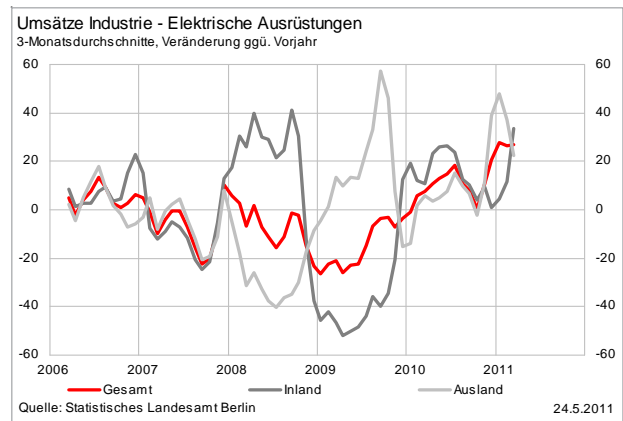
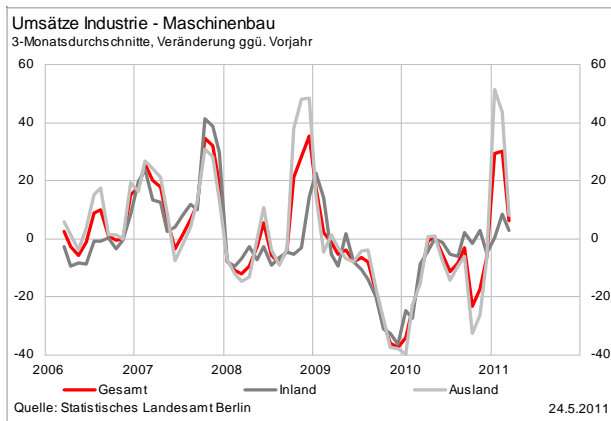
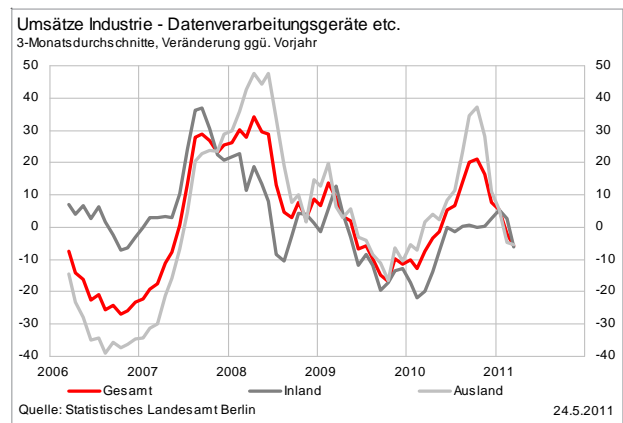
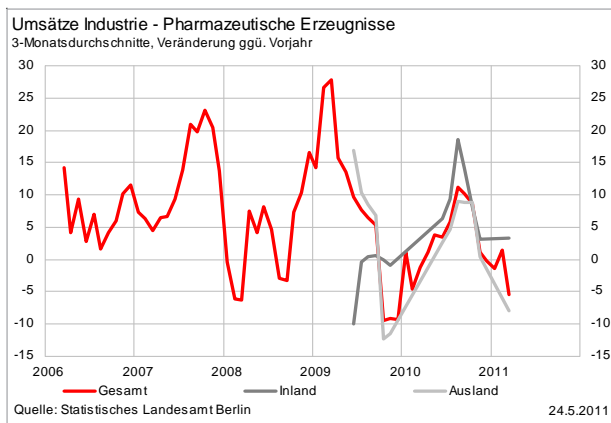
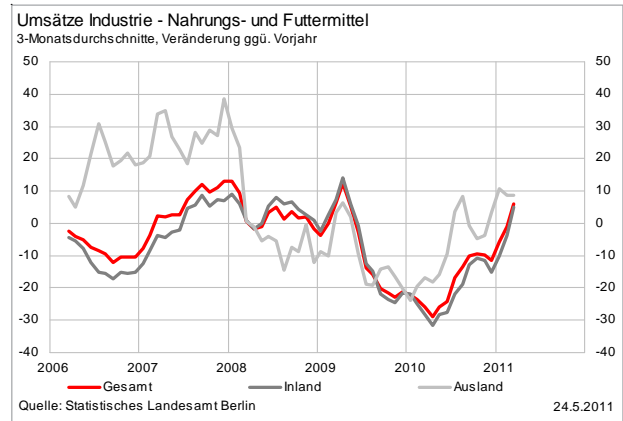
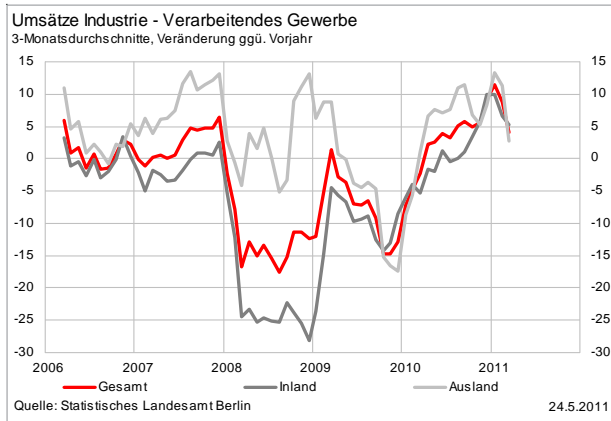
Industrie - Umsätze

(Durch die Änderung der Systematik der Wirtschaftszweige ist ein Vergleich mit den Vorjahren nur eingeschränkt möglich)



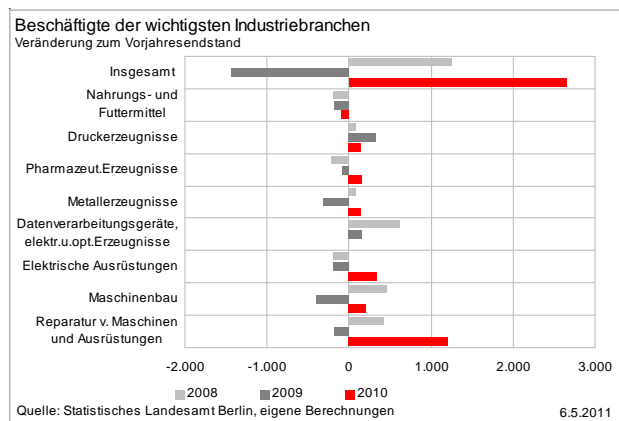
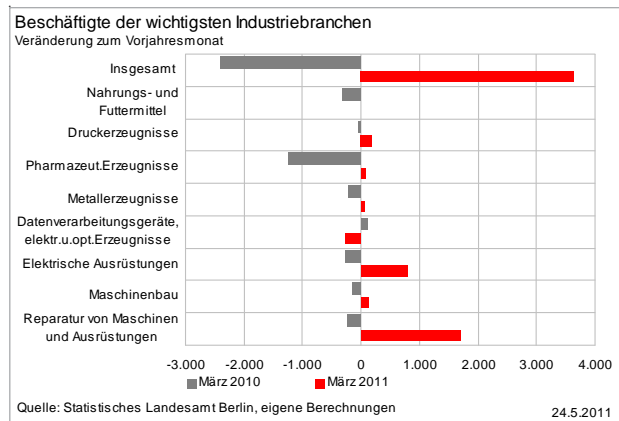
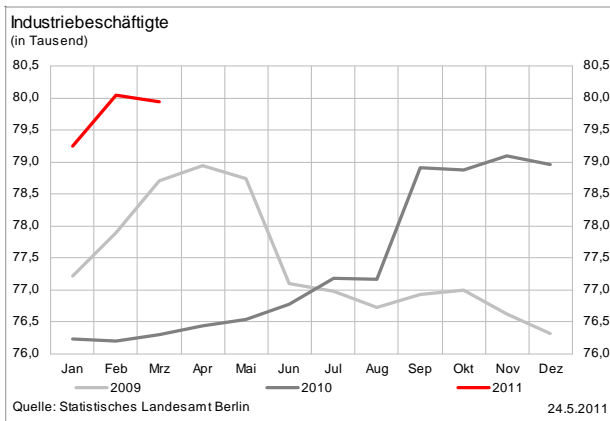
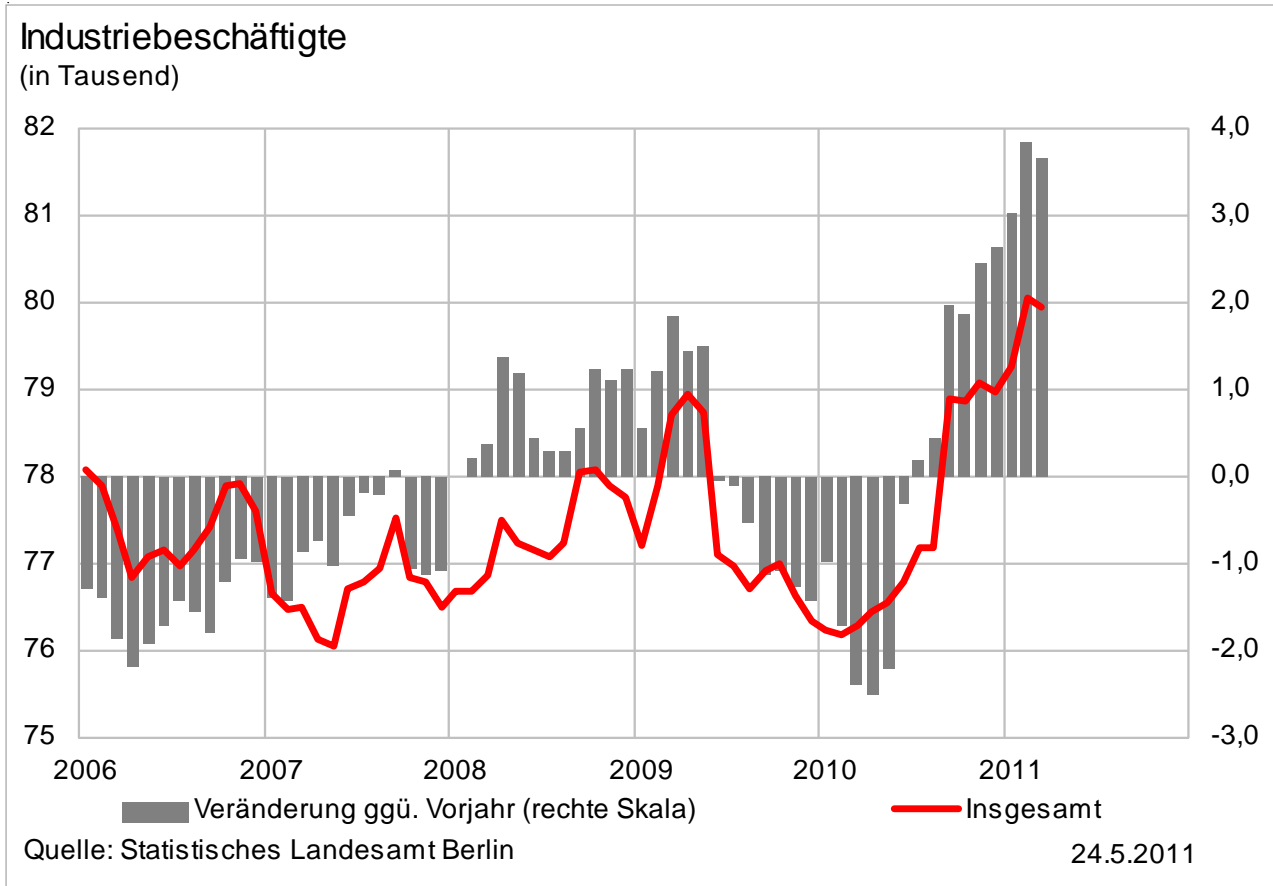
Industrie - Umsätze

(Durch die Änderung der Systematik der Wirtschaftszweige ist ein Vergleich mit den Vorjahren nur eingeschränkt möglich)



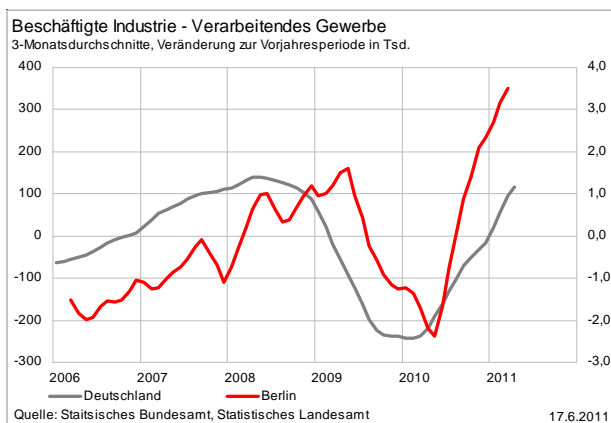
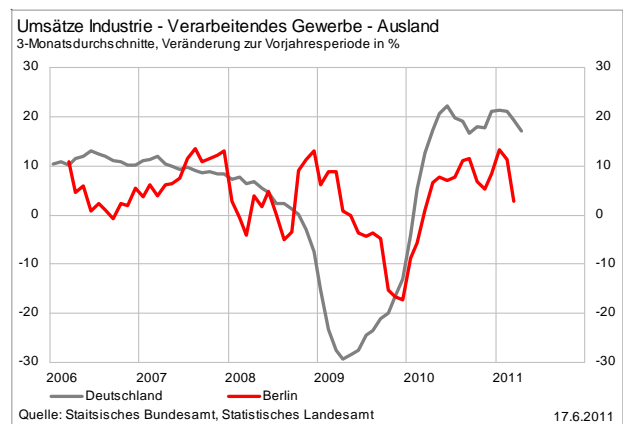
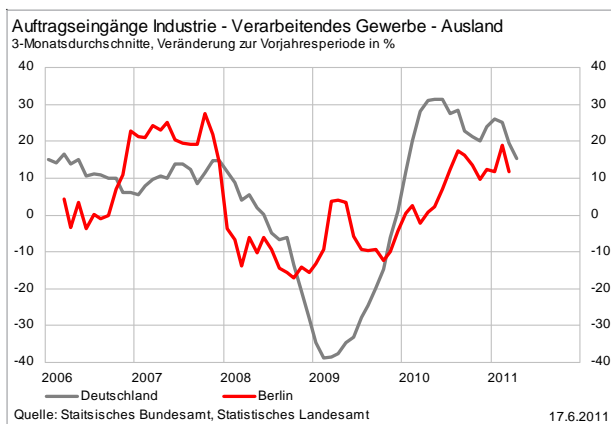
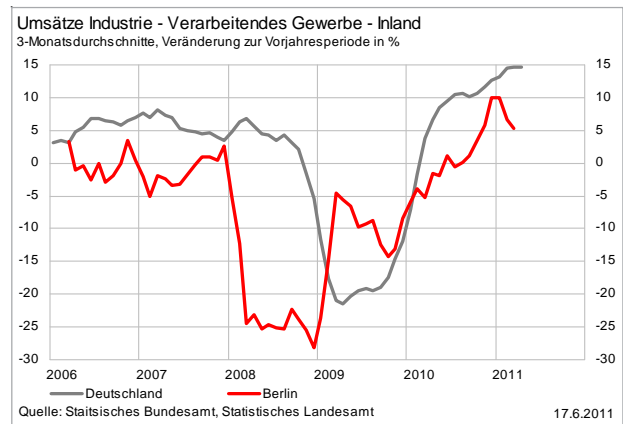
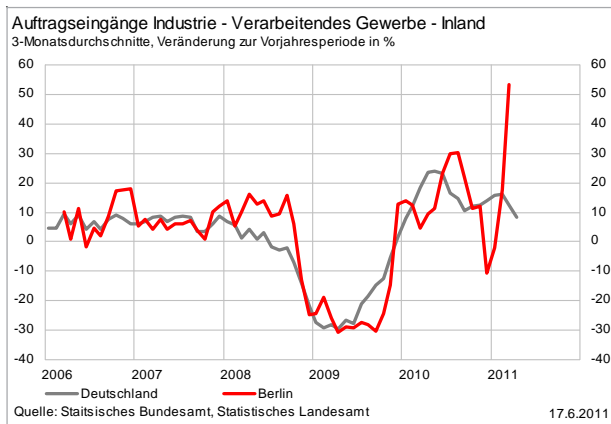
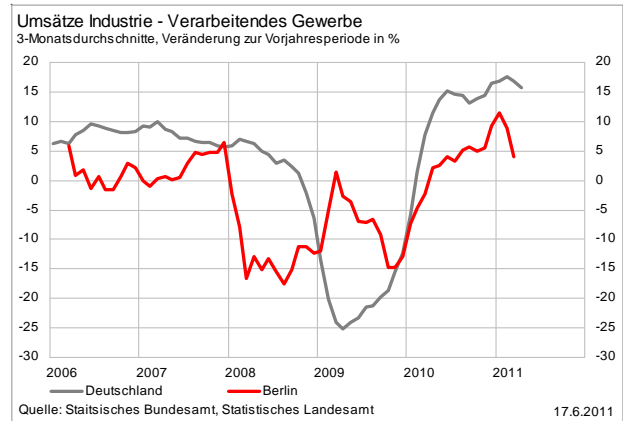
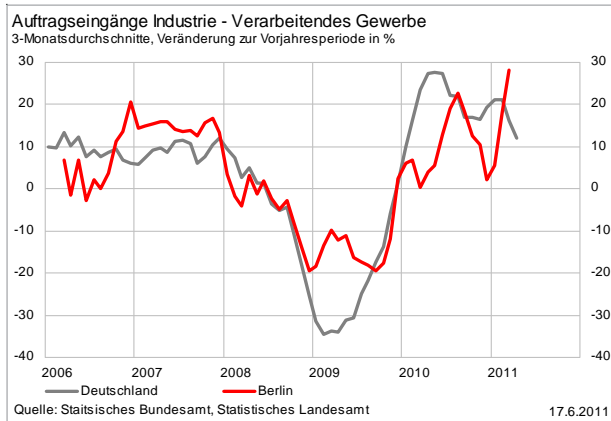
Industrie - Beschäftigte

(Durch die Änderung der Systematik der Wirtschaftszweige ist ein Vergleich mit den Vorjahren nur eingeschränkt möglich)

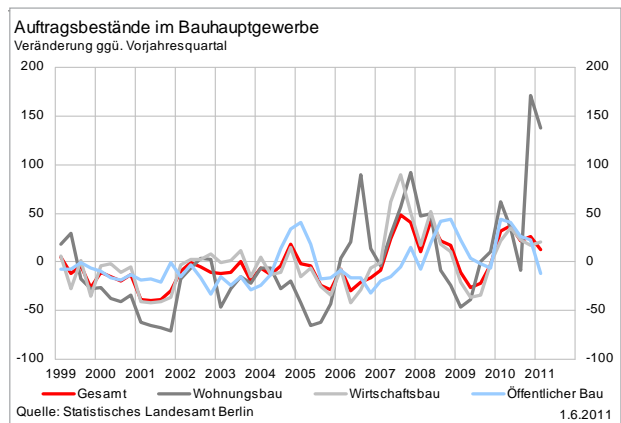
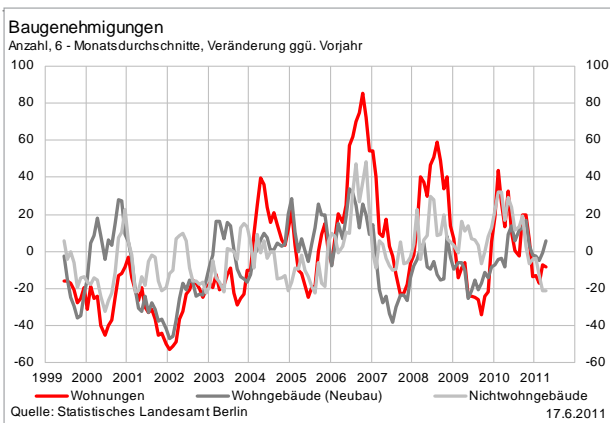
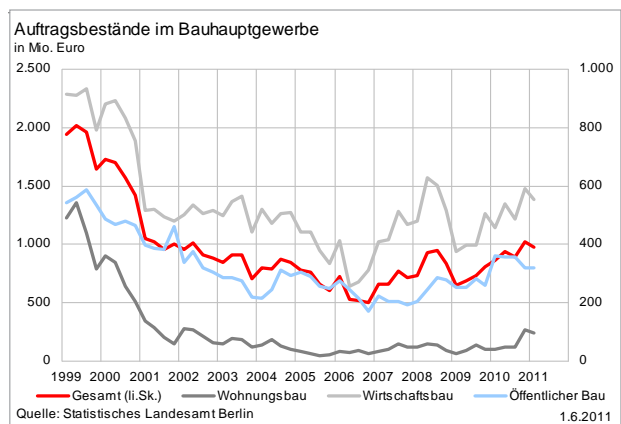
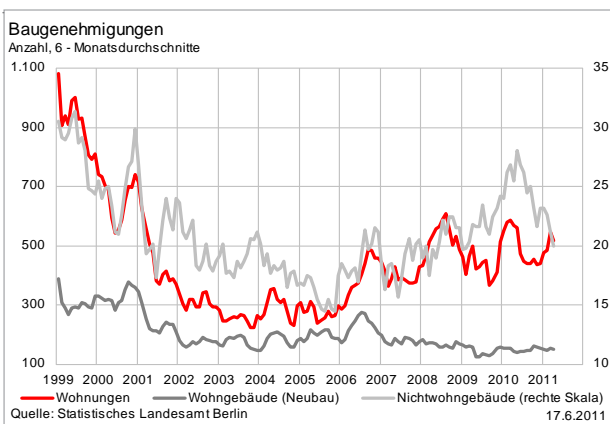
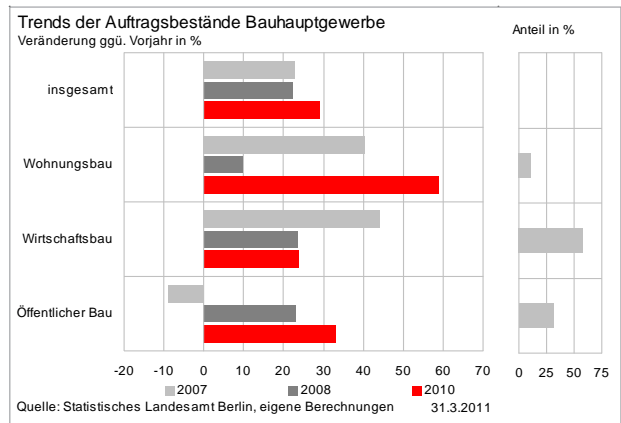
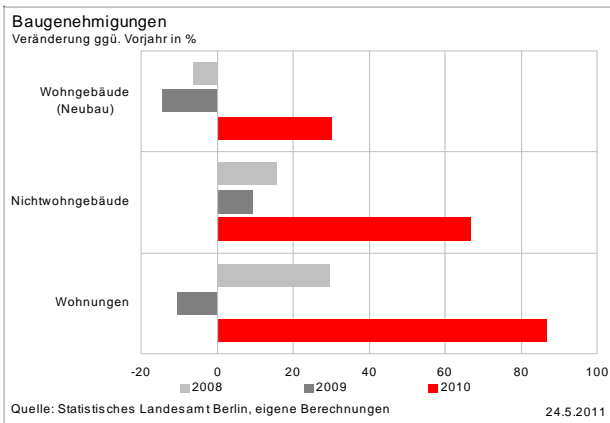
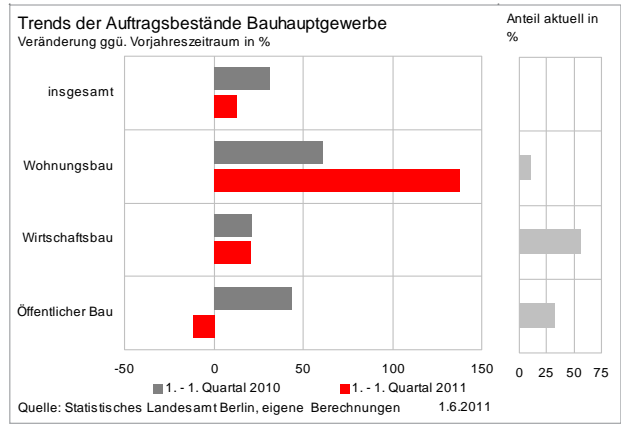
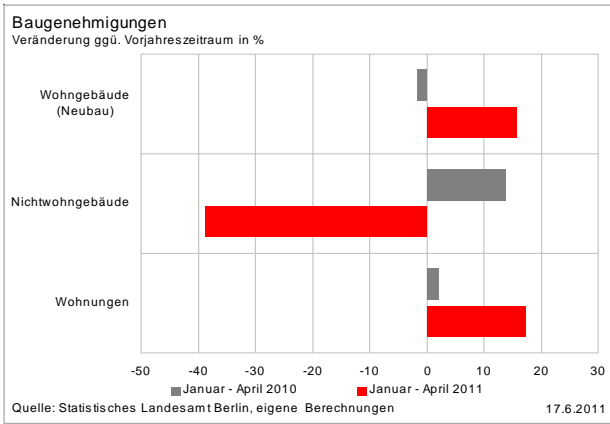


Industrie - Berlin im Deutschland-Vergleich

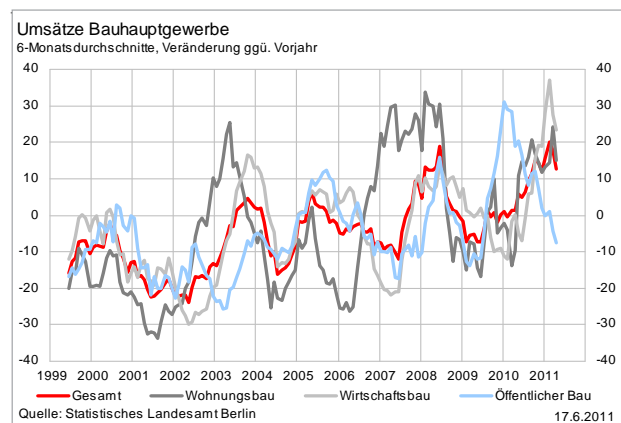
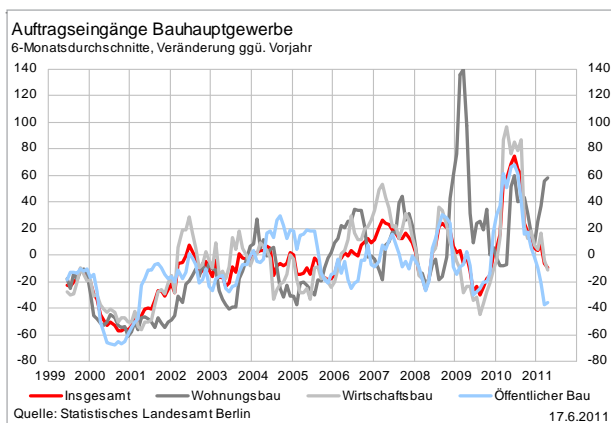
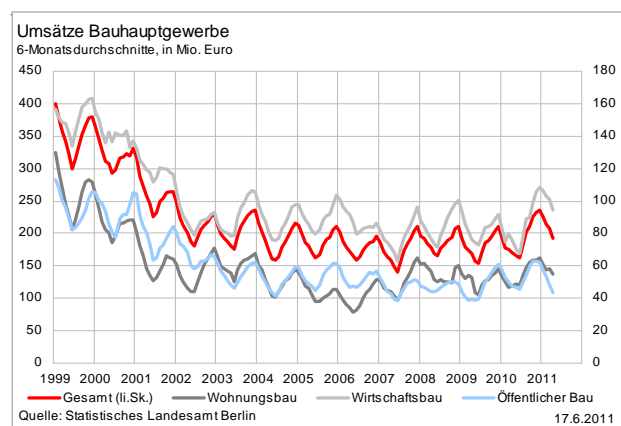
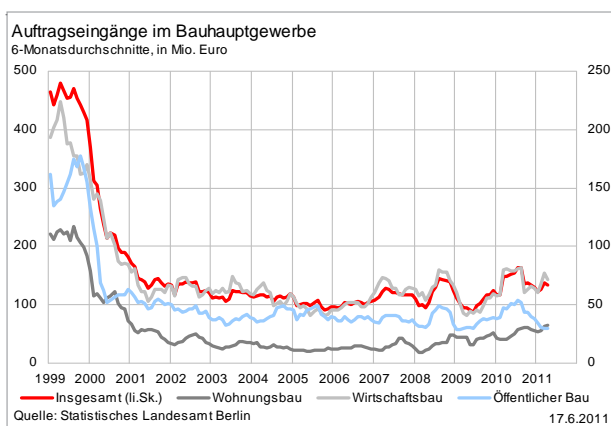
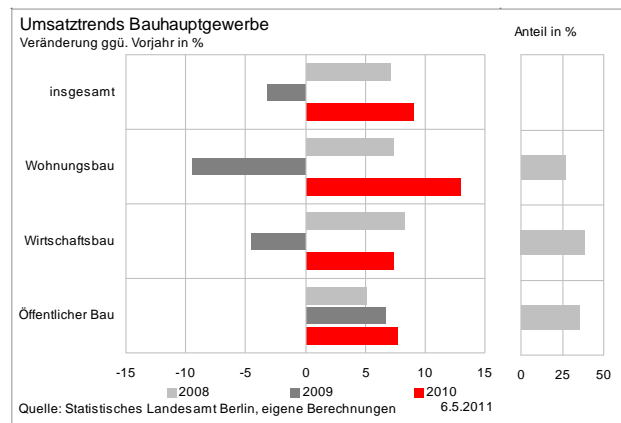
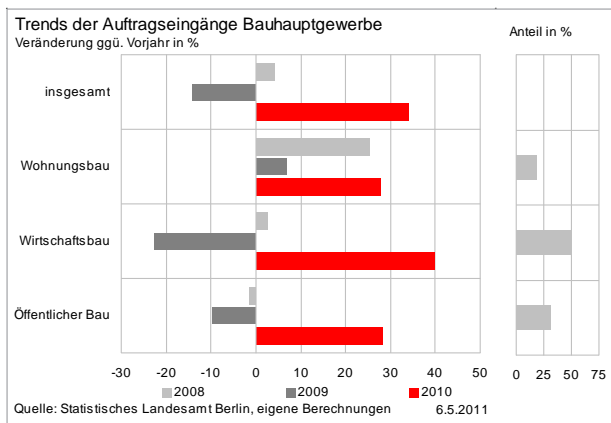
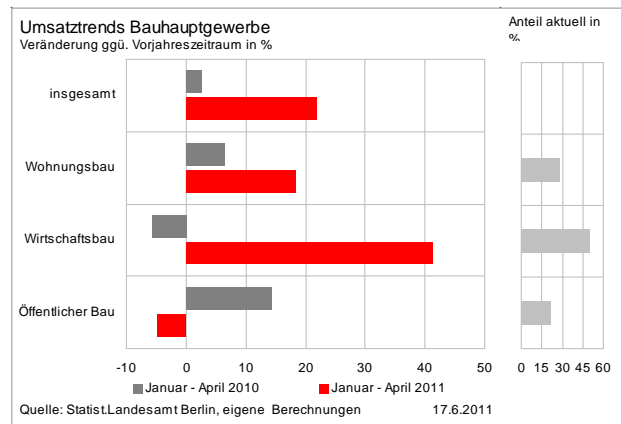
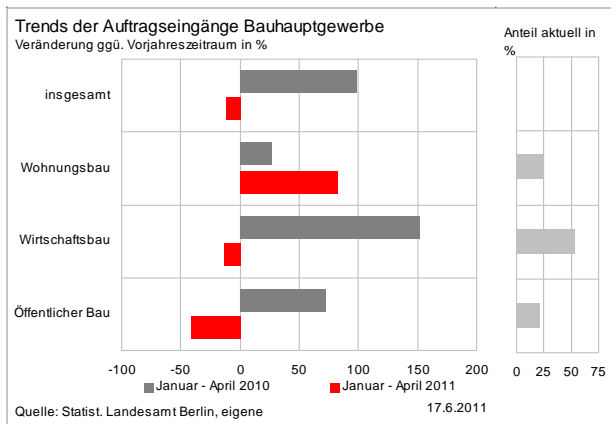
(Durch die Änderung der Systematik der Wirtschaftszweige ist ein Vergleich mit den Vorjahren nur eingeschränkt möglich)



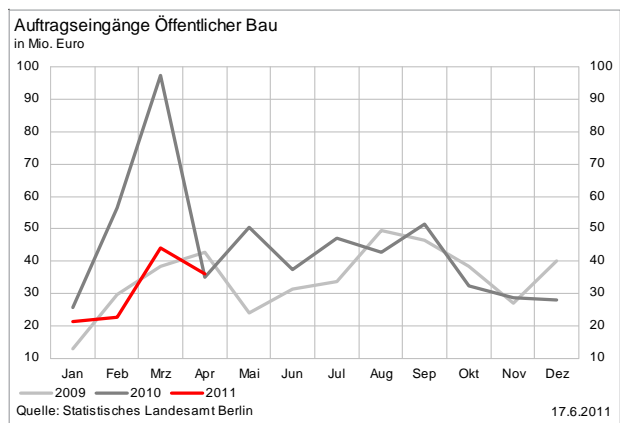
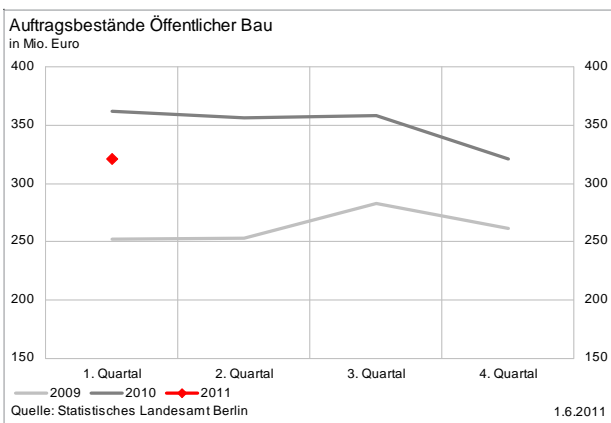
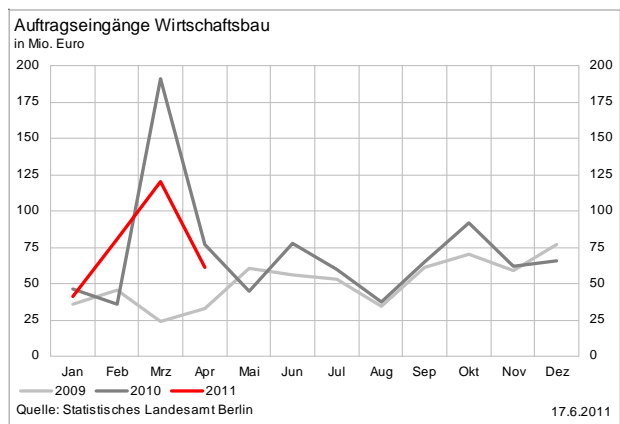
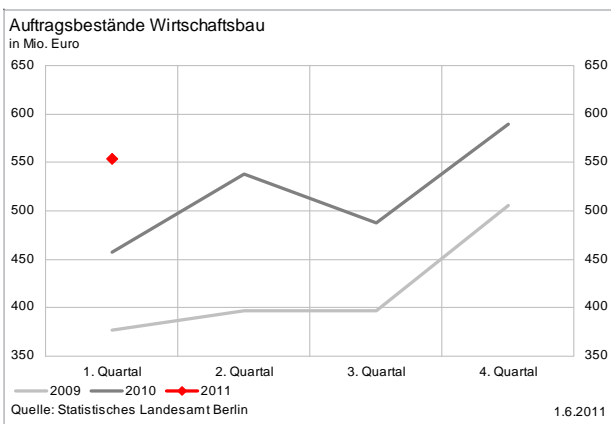
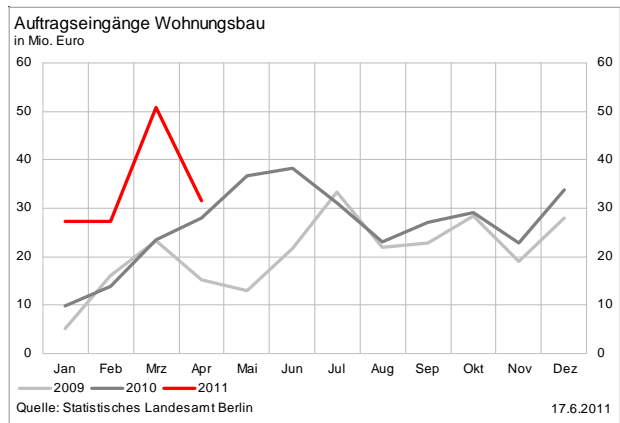
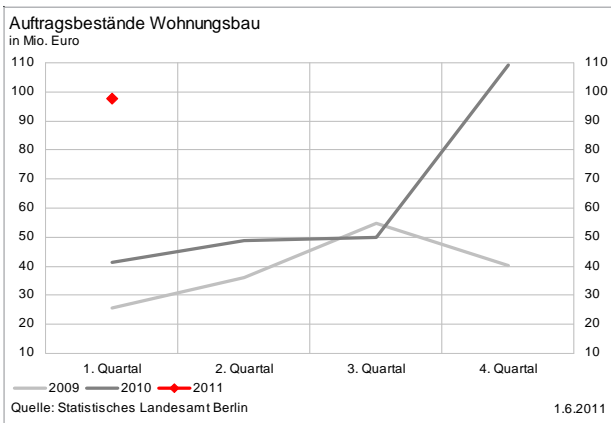
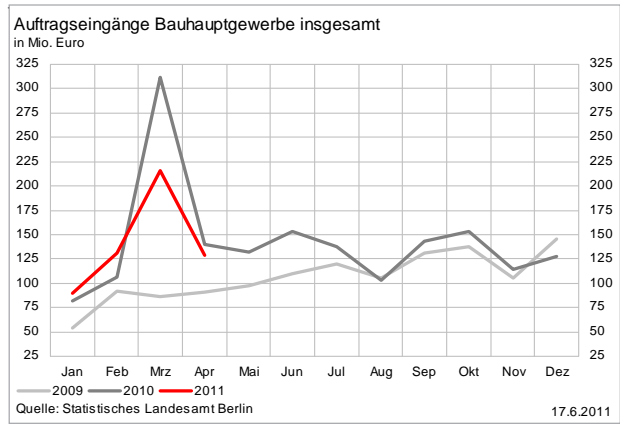
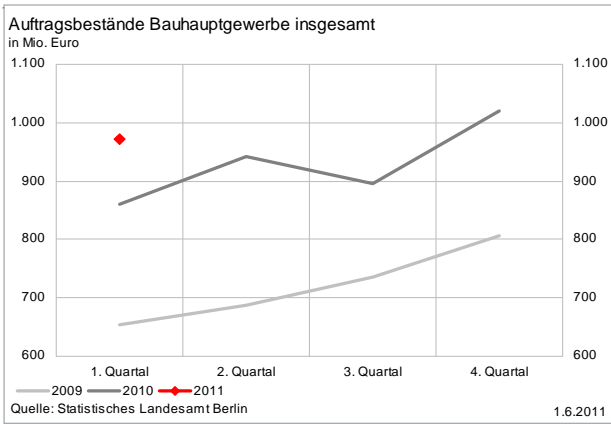
Baugewerbe



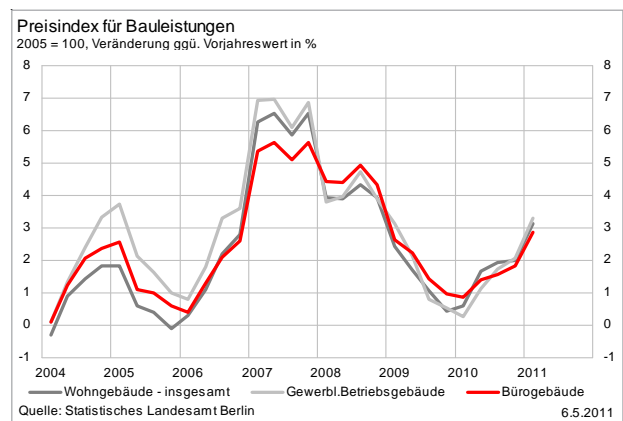
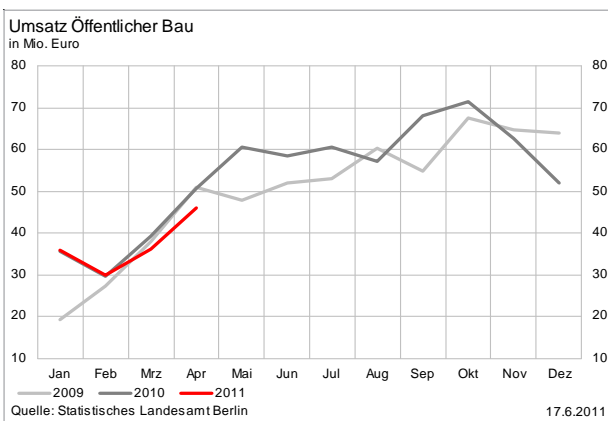
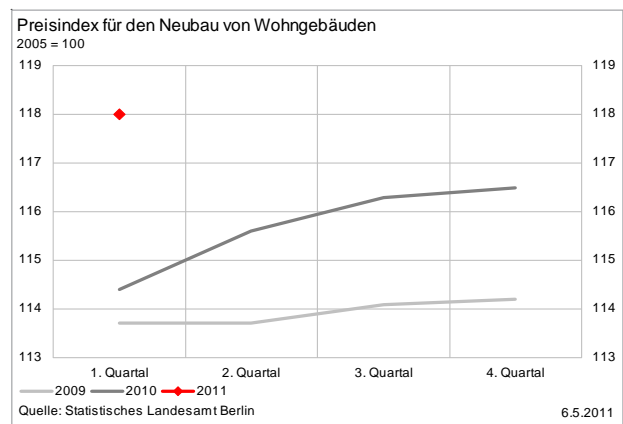
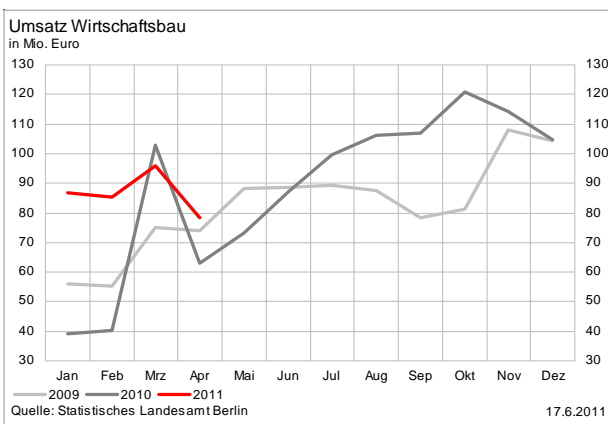
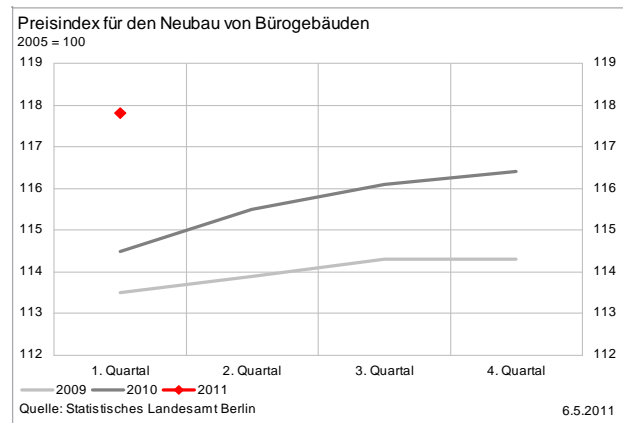
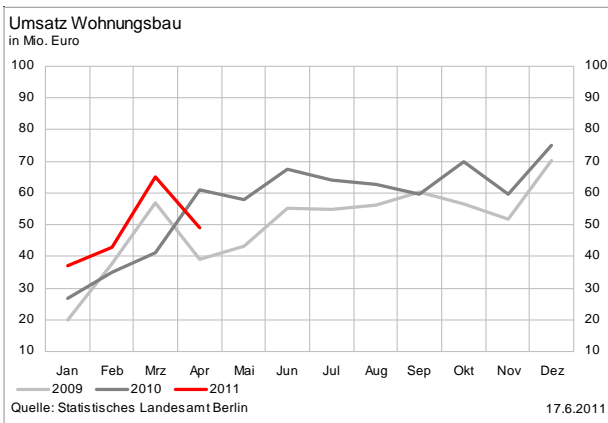
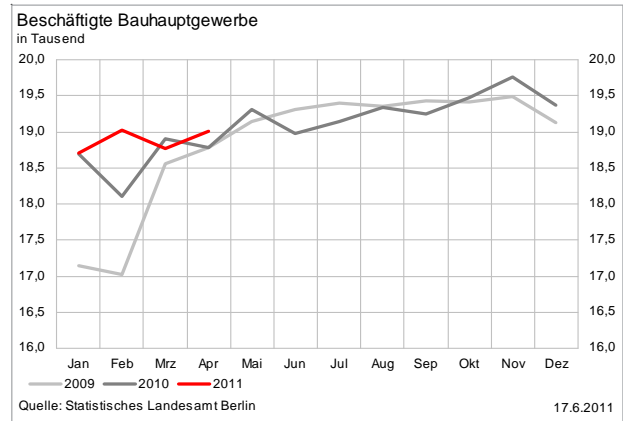
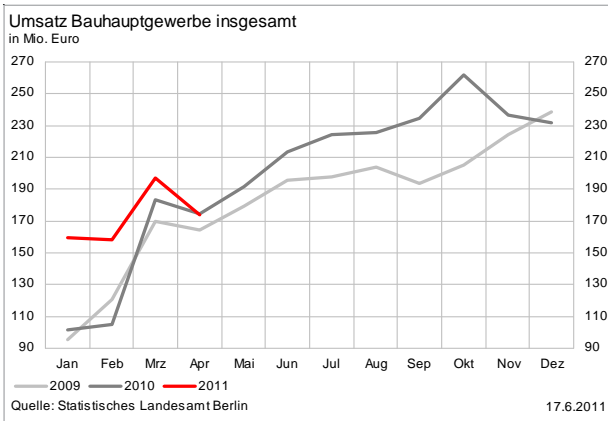
Baugewerbe



Baugewerbe

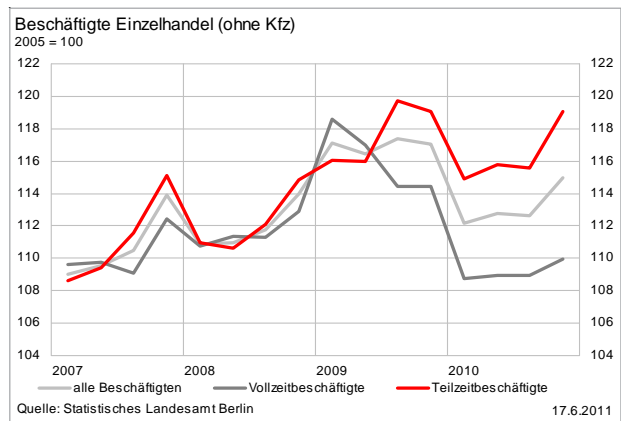
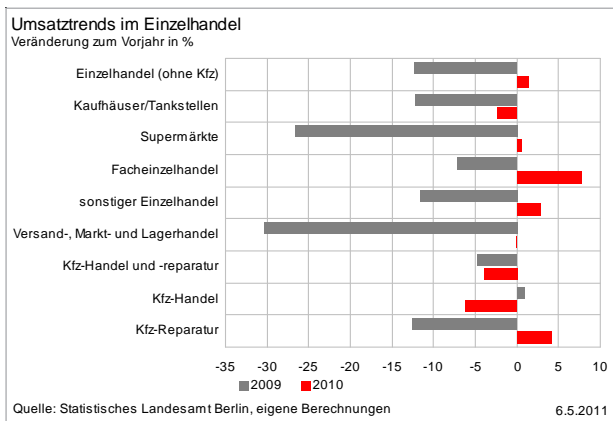
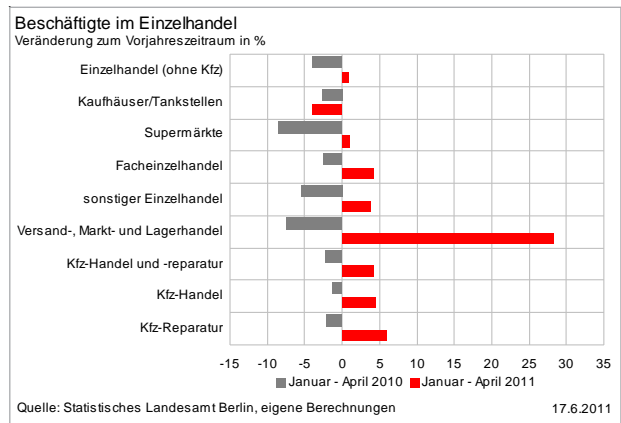
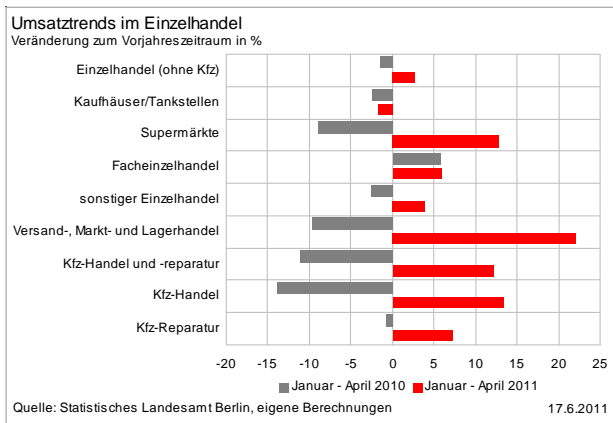
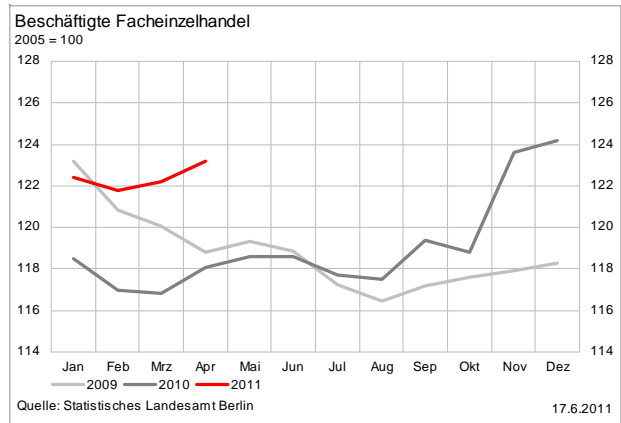
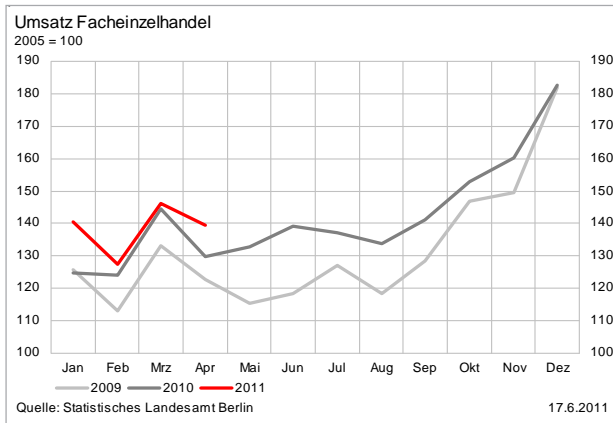
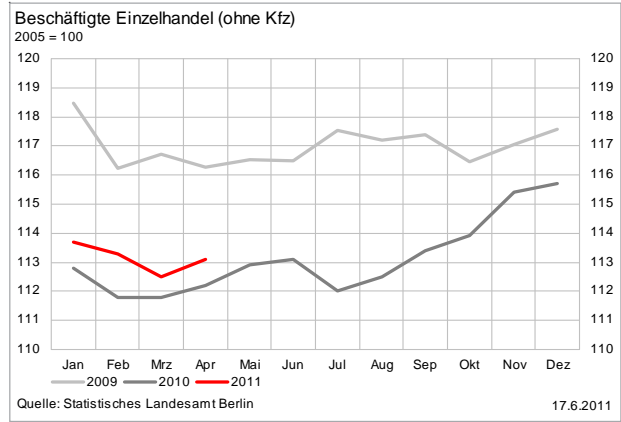
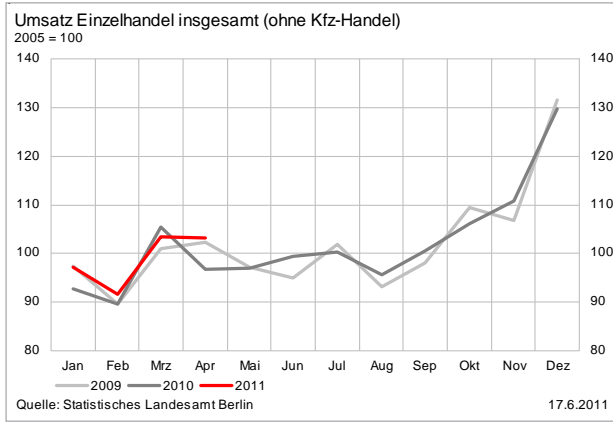


Baugewerbe



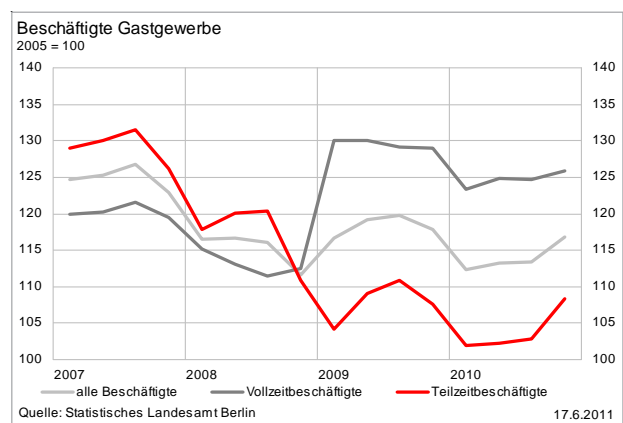
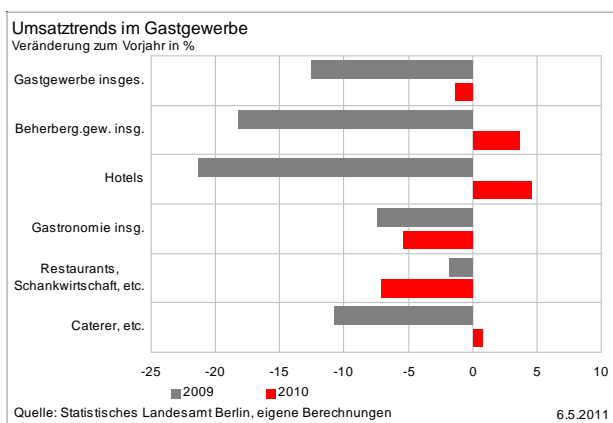
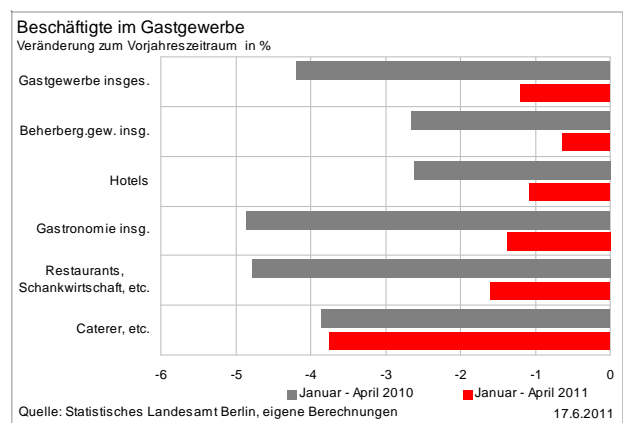
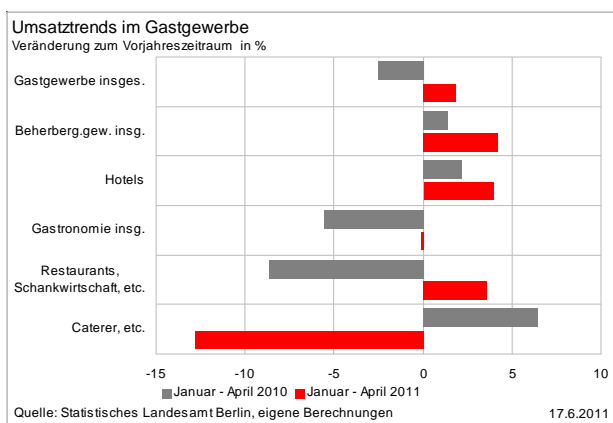
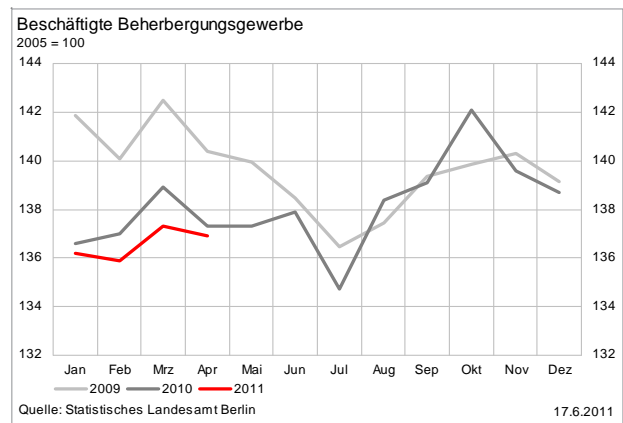
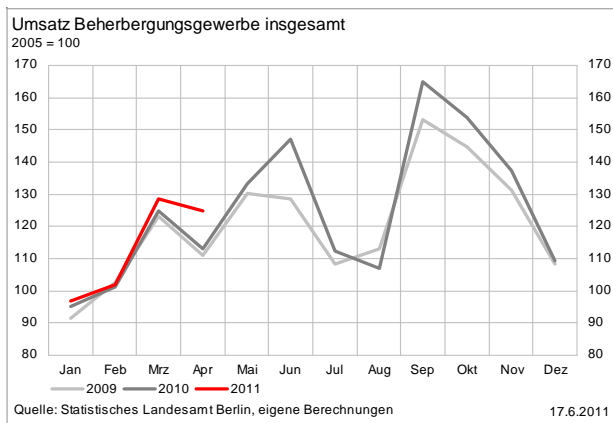
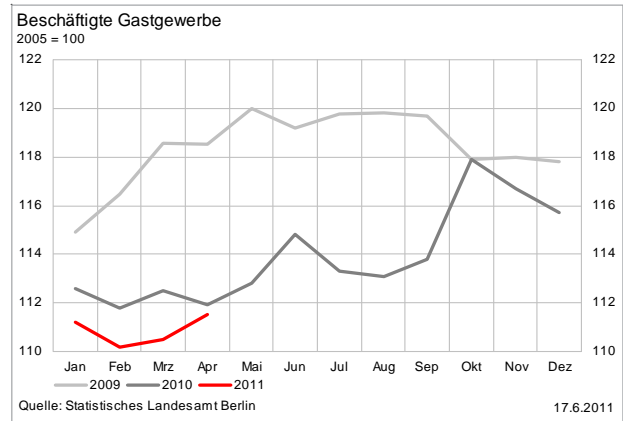
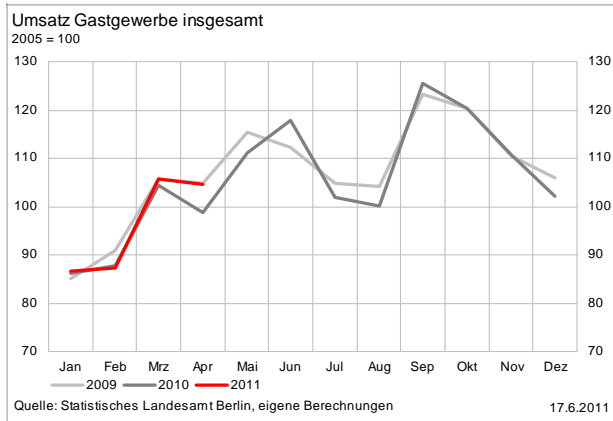
Einzelhandel

(Durch die Änderung der Systematik der Wirtschaftszweige ist ein Vergleich mit den Vorjahren nur eingeschränkt möglich)

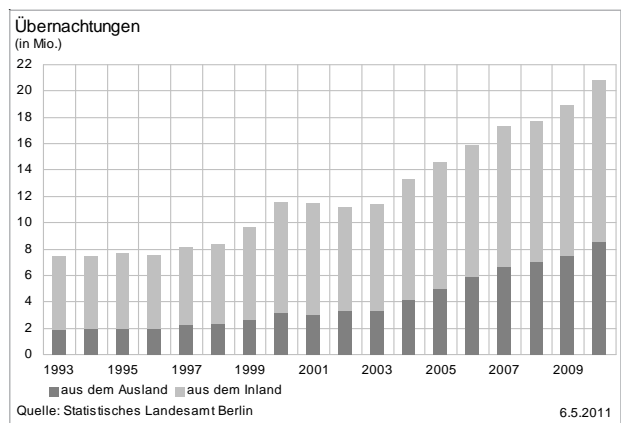
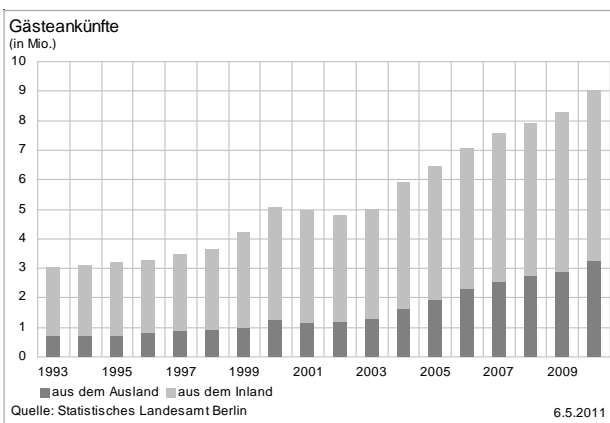
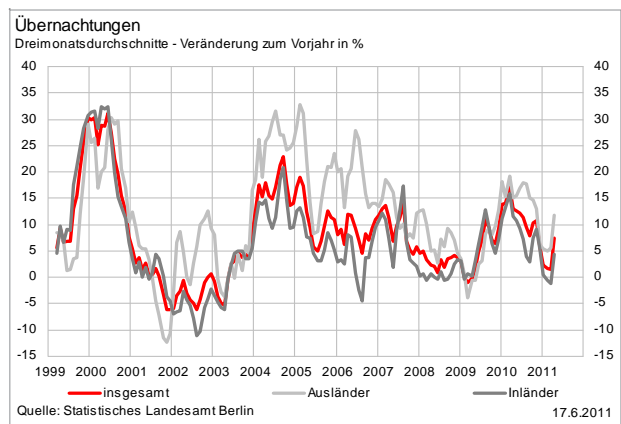
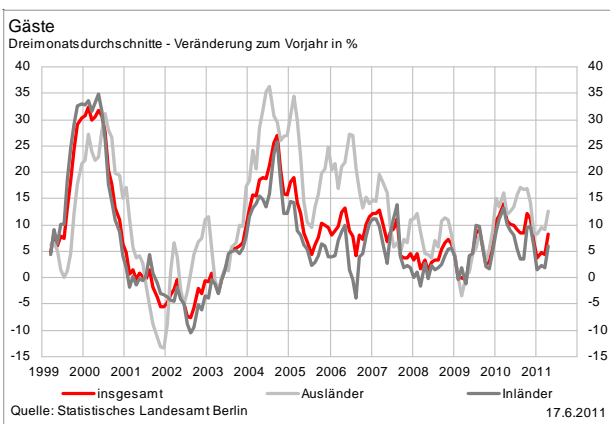
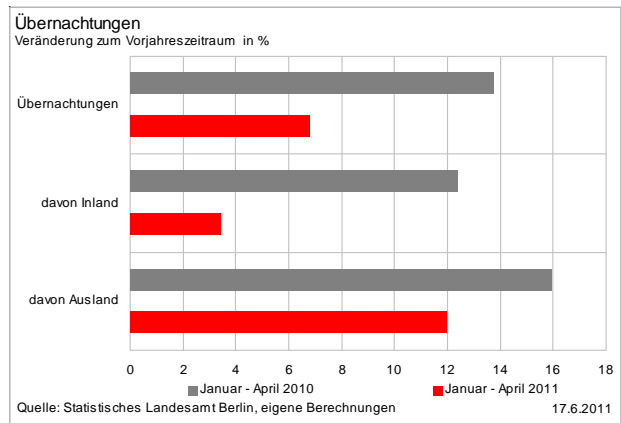
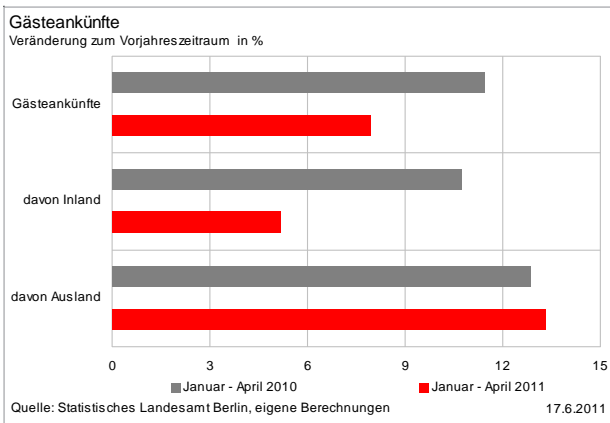
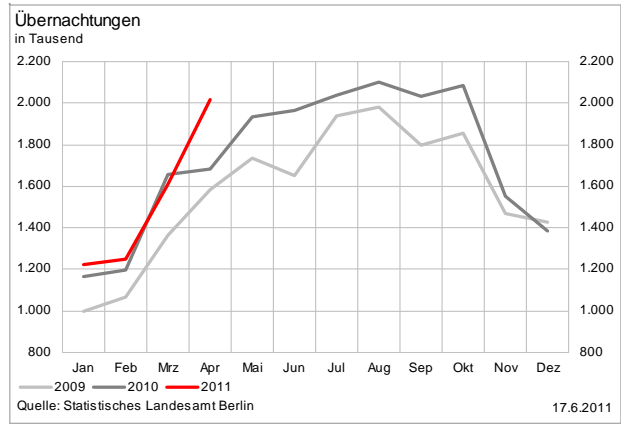
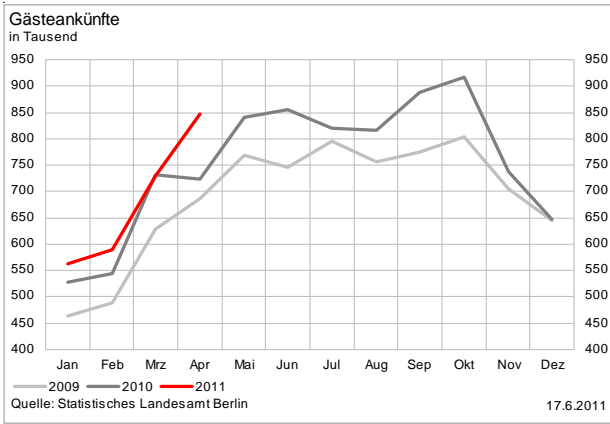


Gastgewerbe

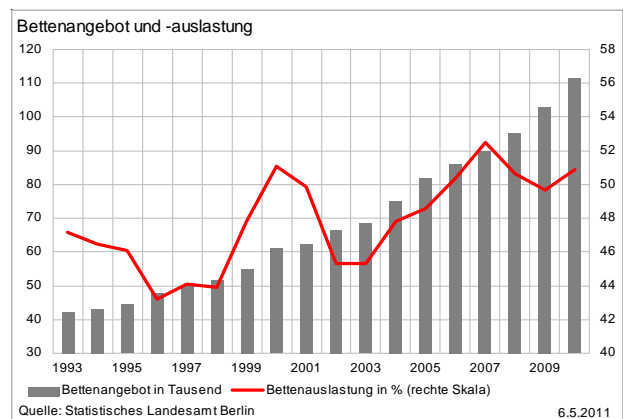
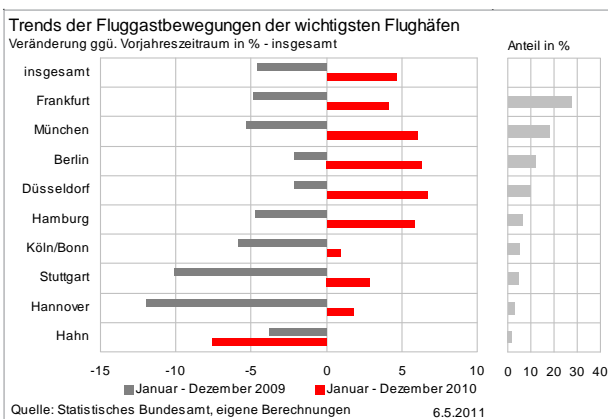
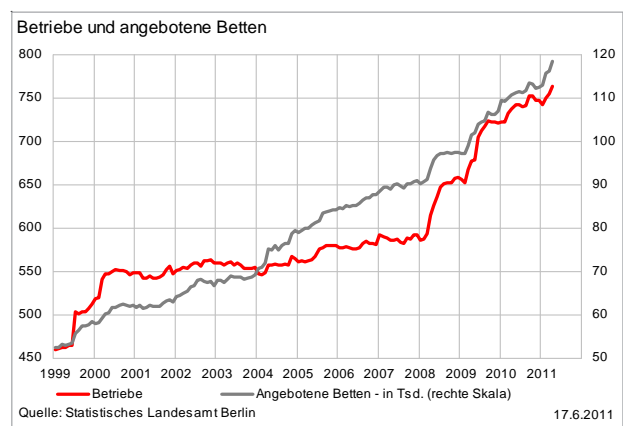
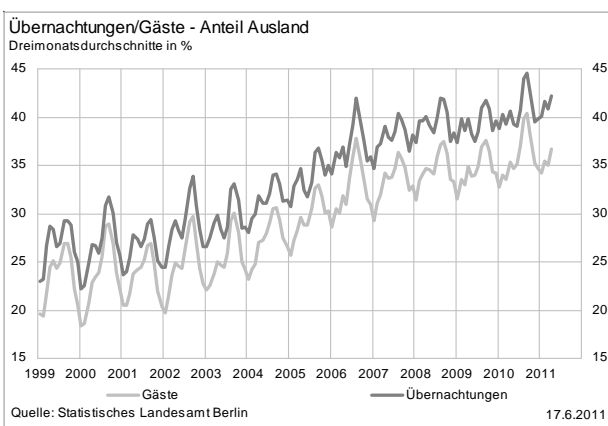
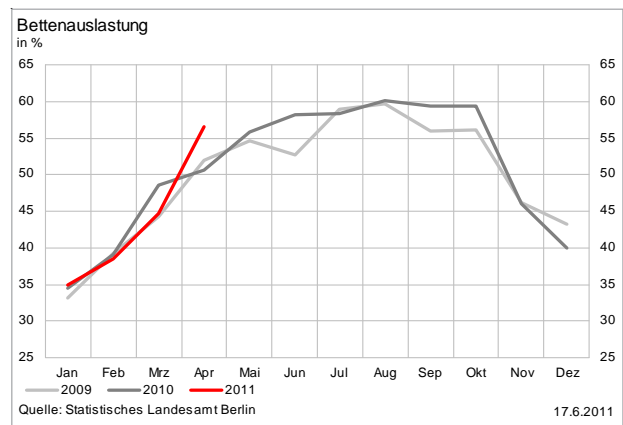
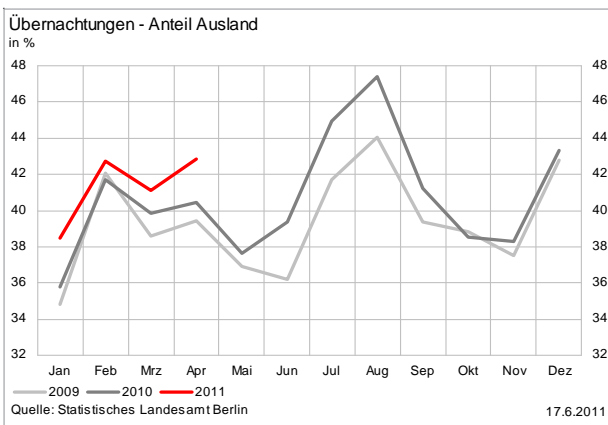
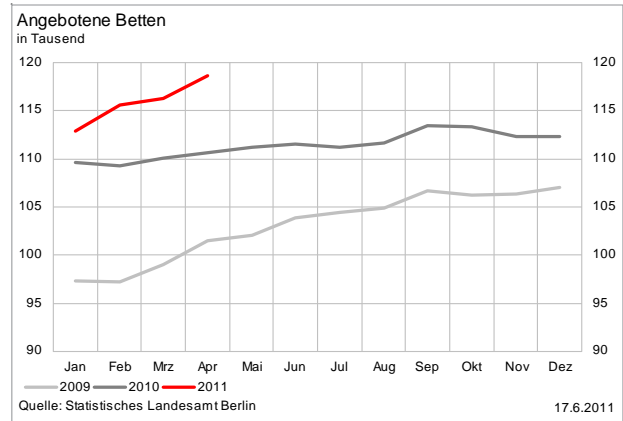
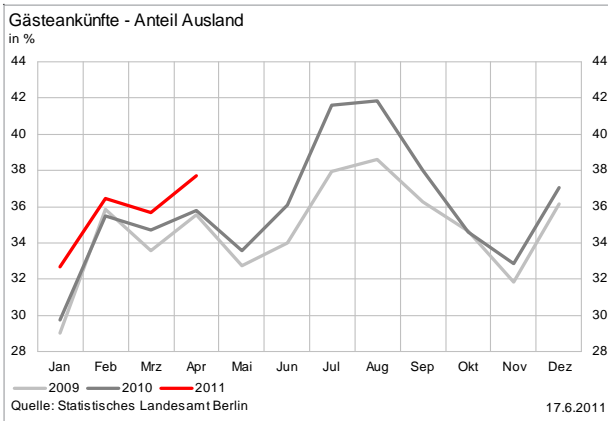
(Durch die Änderung der Systematik der Wirtschaftszweige ist ein Vergleich mit den Vorjahren nur eingeschränkt möglich)



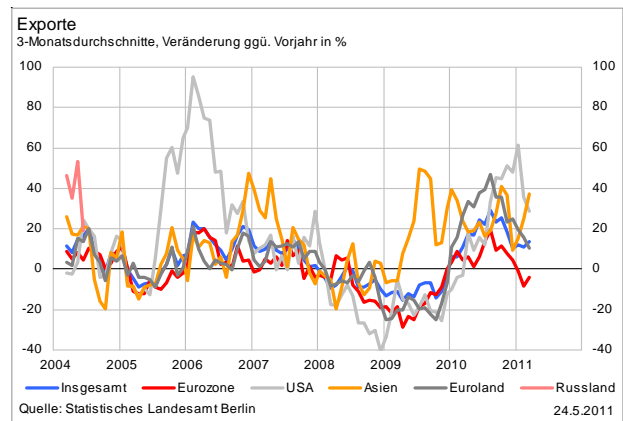
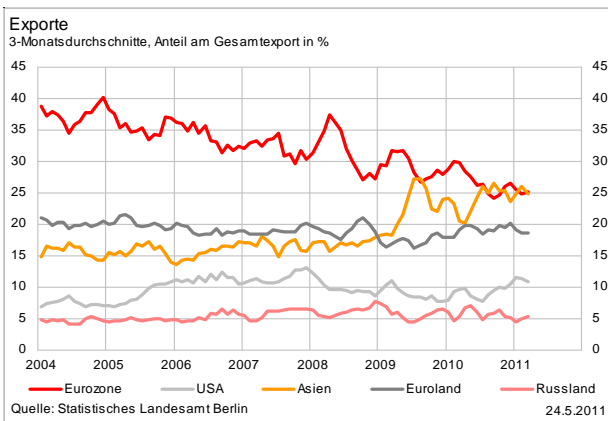
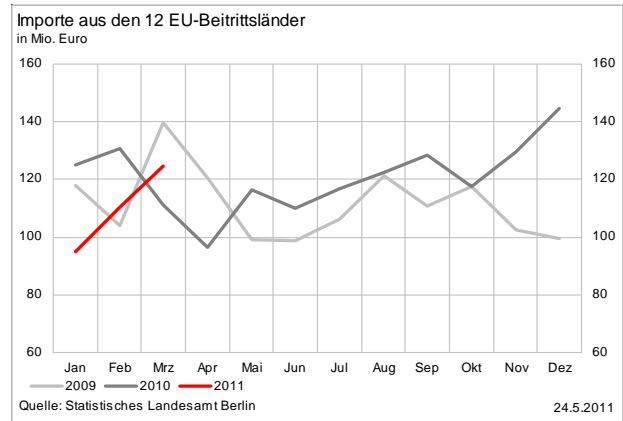
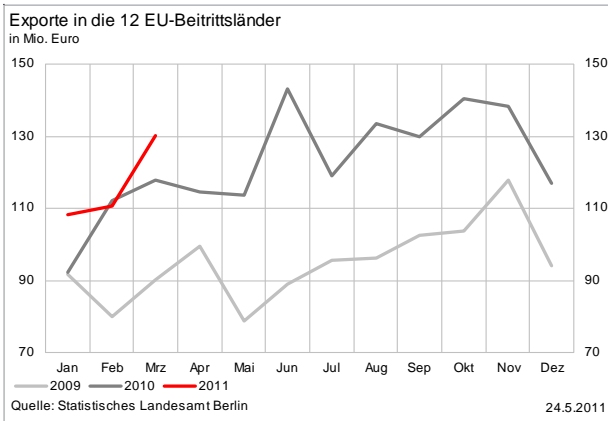
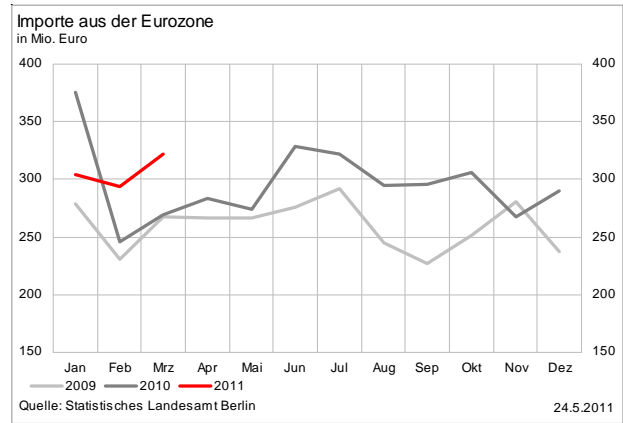
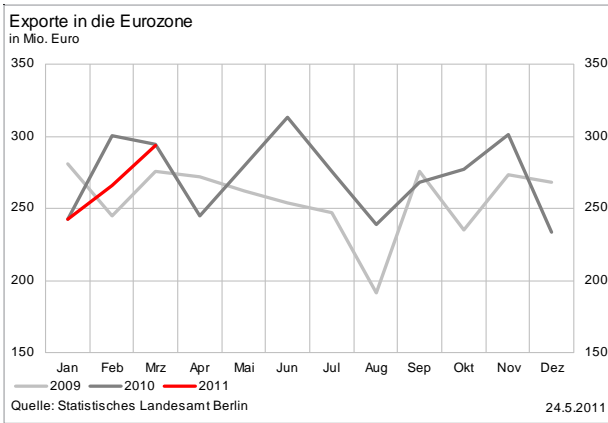
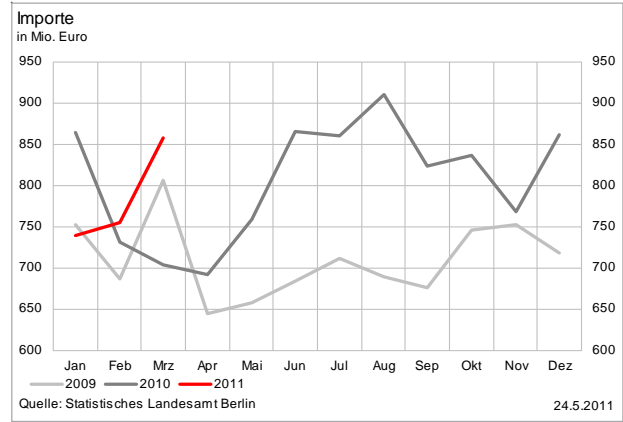
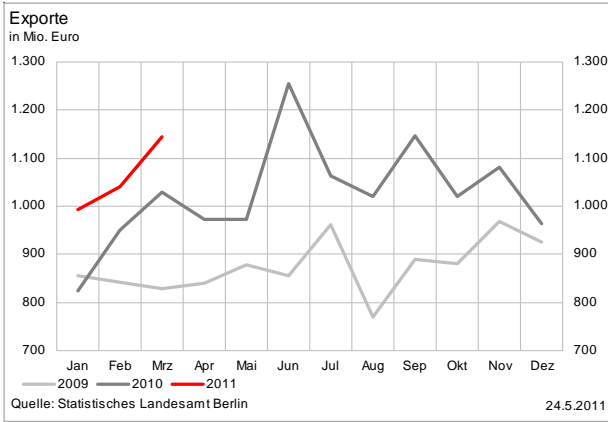
Tourismus



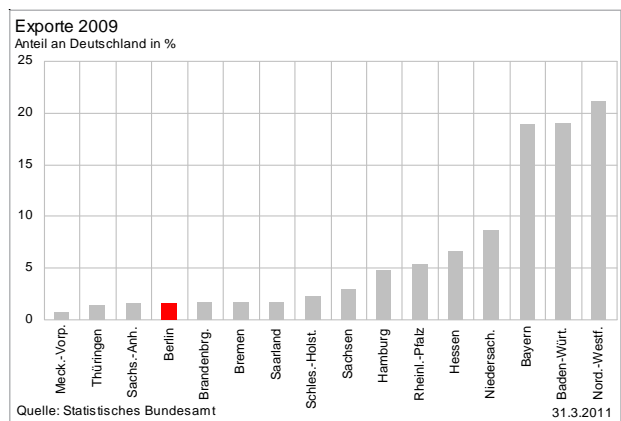
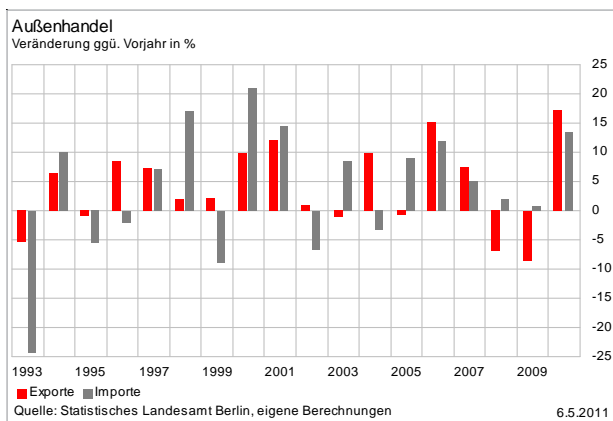
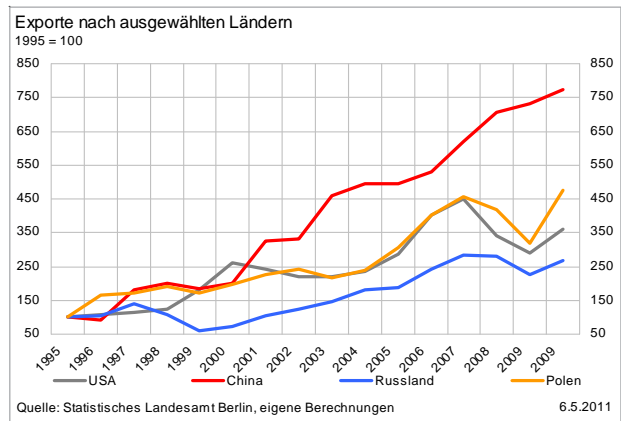
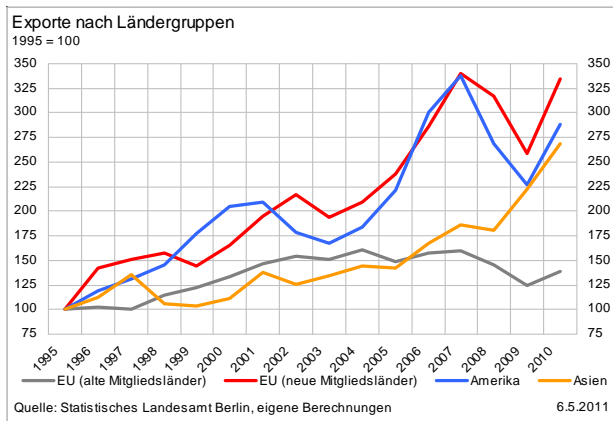
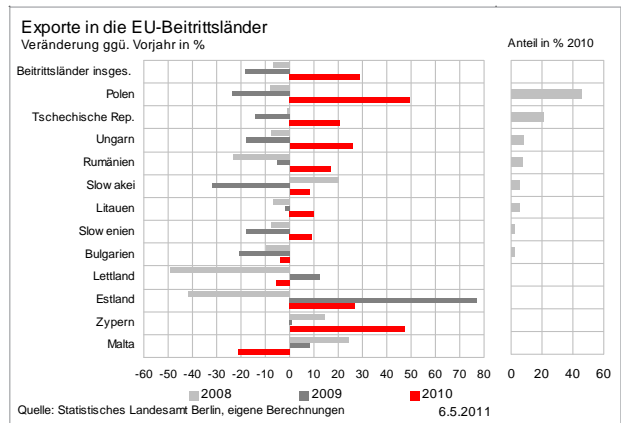
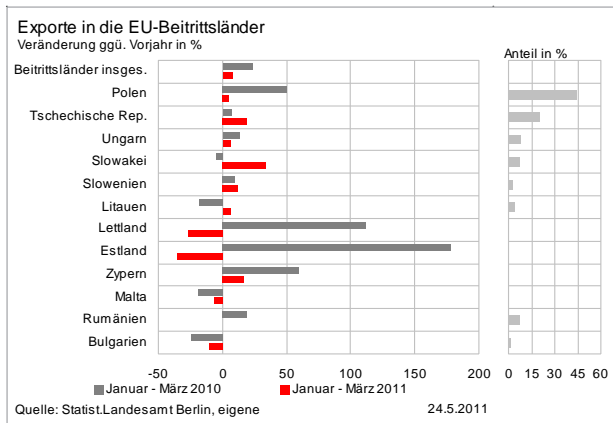
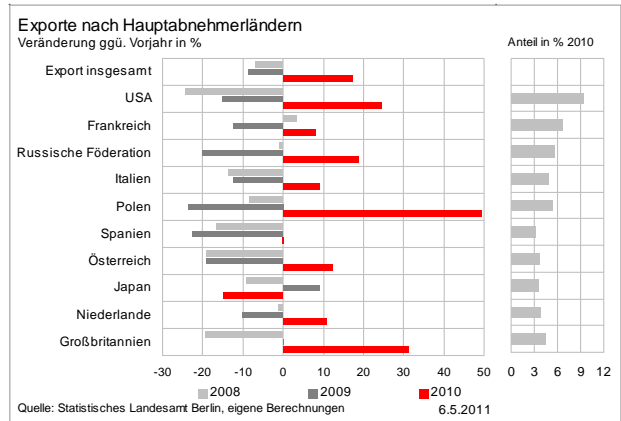
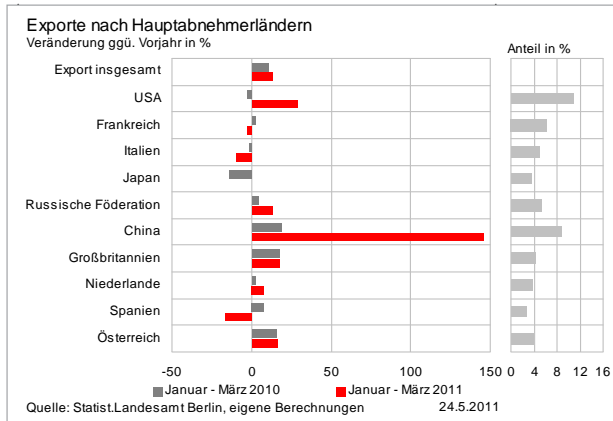
Tourismus



Ein- und Ausfuhr



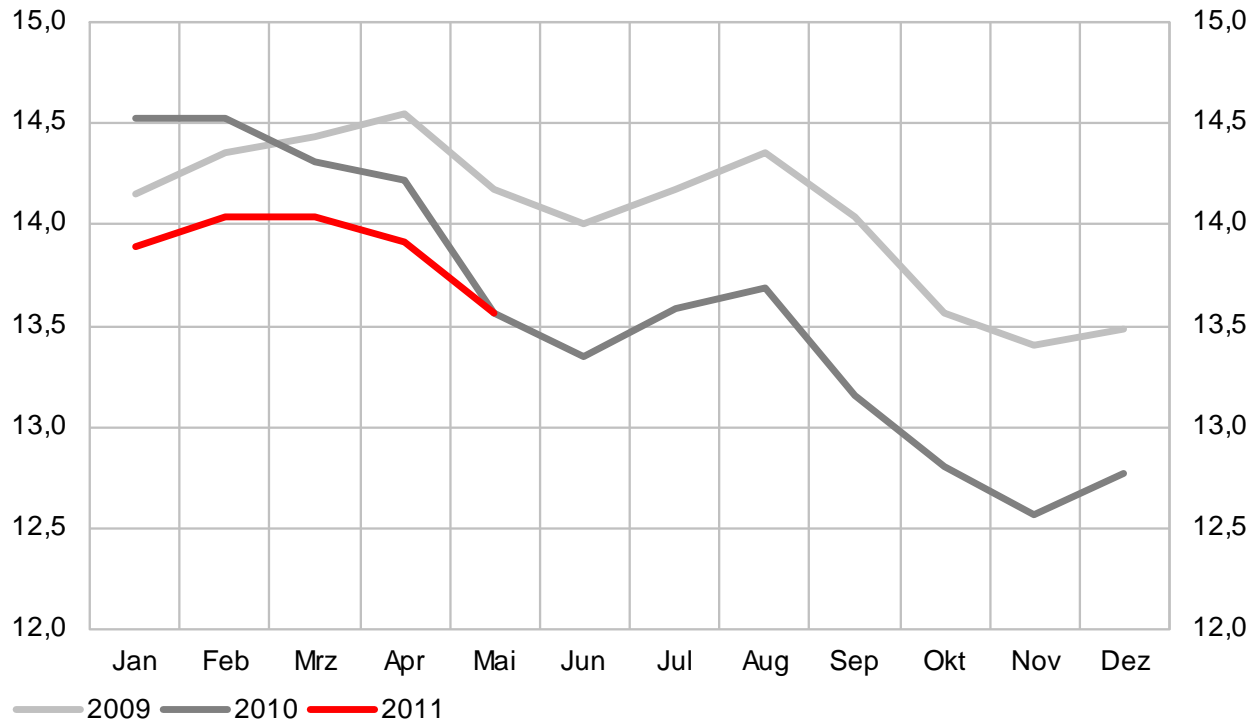
Ein- und Ausfuhr



Arbeitsmarkt

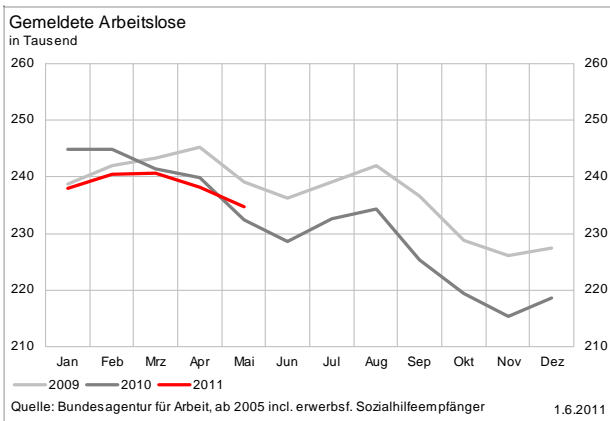
Arbeitslosenquote

in %



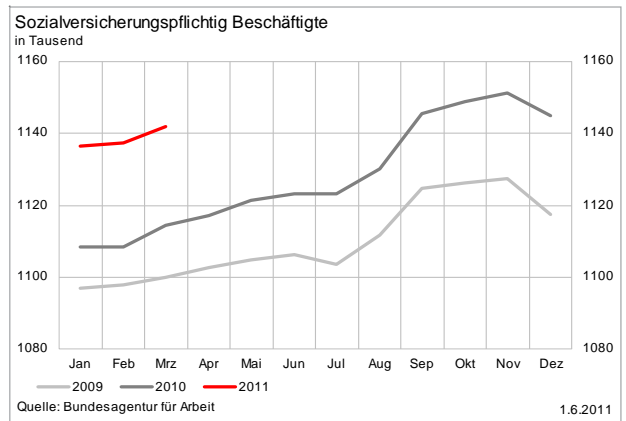
Quelle: Bundesagentur für Arbeit, ab 2005 incl. erwerbsf. Sozialhilfeempfänger

1.6.2011



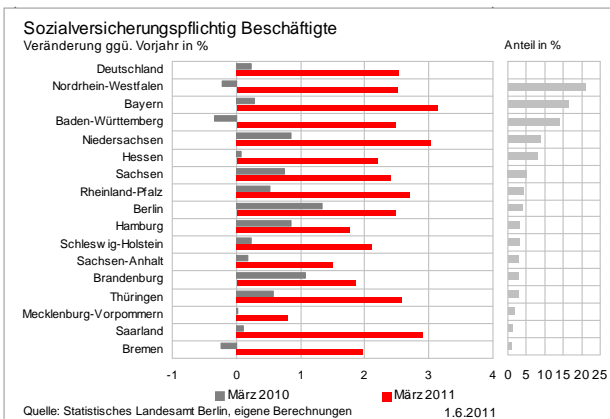
Quelle: Bundesagentur für Arbeit, ab 2005 incl. erwerbsf. Sozialhilfeempfänger

1.6.2011



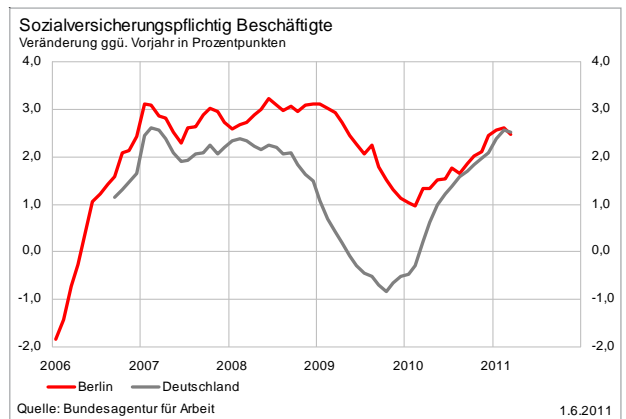
Quelle: Bundesagentur für Arbeit

1.6.2011



Quelle: Statistisches Landesamt Berlin, eigene Berechnungen

1.6.2011

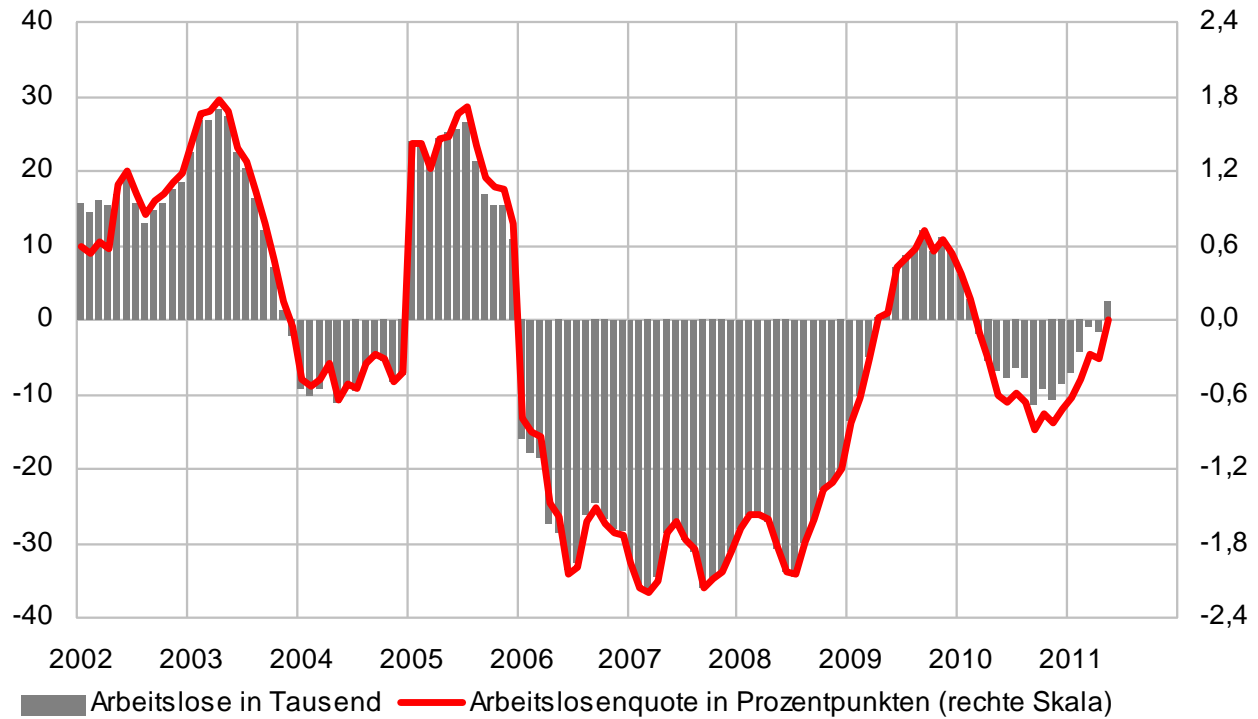


Quelle: Bundesagentur für Arbeit

1.6.2011

Arbeitsmarkt

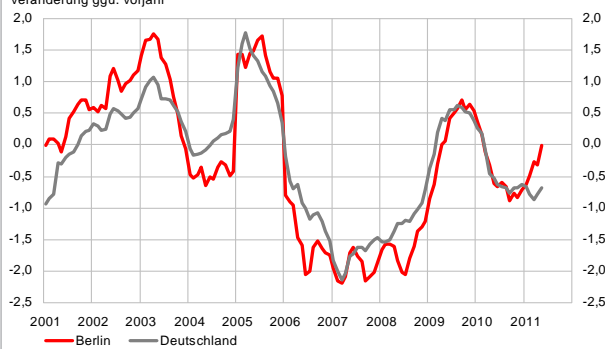
Veränderung der Arbeitslosigkeit (ggü. Vorjahresmonat)



Quelle: Bundesagentur für Arbeit, ab 2005 incl. erwerbsf. Sozialhilfeempfänger

1.6.2011

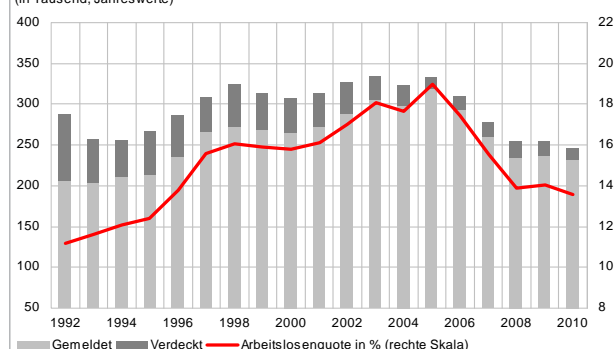
Arbeitslosenquoten im Vergleich Veränderung ggü. Vorjahr



Quelle: Bundesagentur für Arbeit

1.6.2011

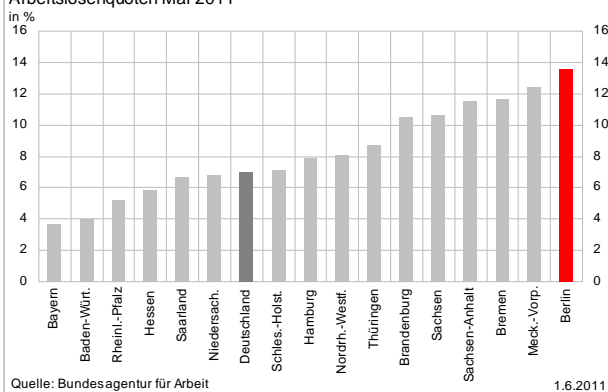
Arbeitslosigkeit (in Tausend, Jahreswerte)



Quelle: Bundesagentur für Arbeit

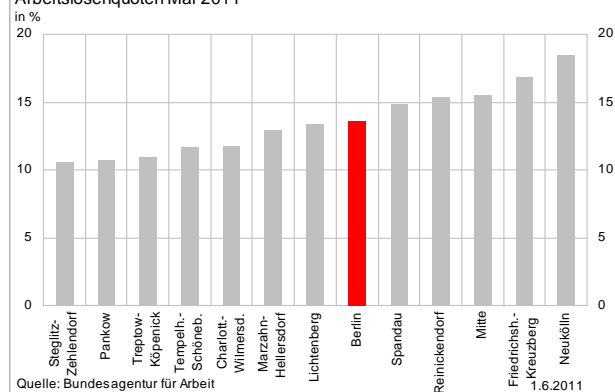
6.5.2011

Arbeitslosenquoten Mai 2011



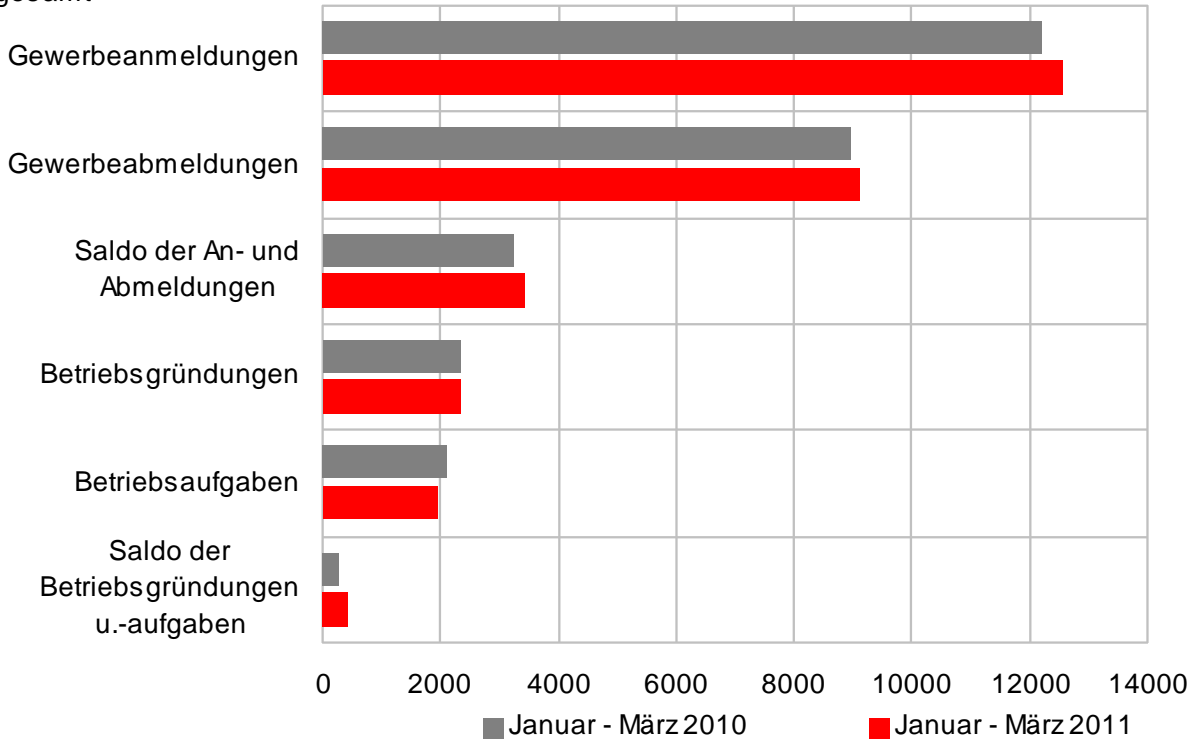
1.6.2011

Arbeitslosenquoten Mai 2011



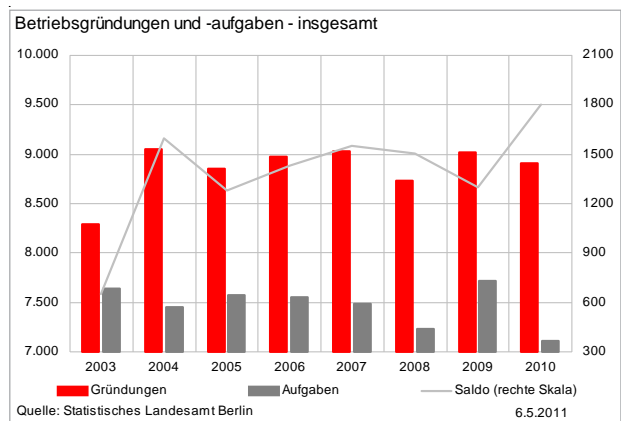
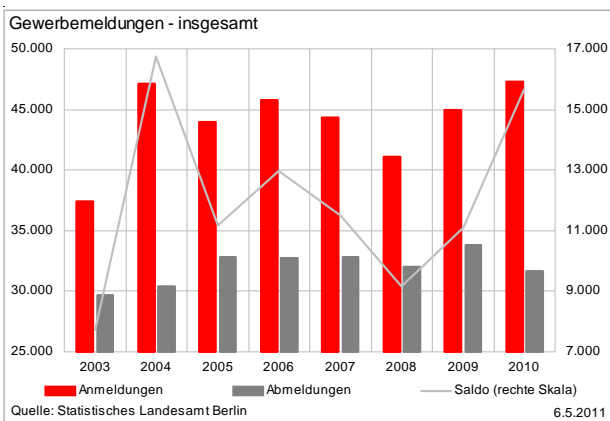
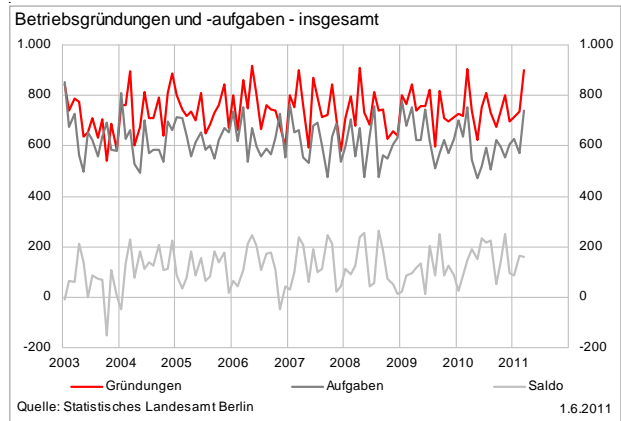
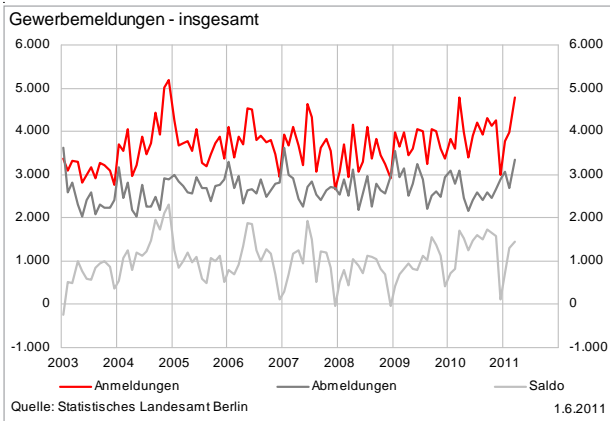
Gründungsgeschehen

Trends der Gewerbeanmeldungen insgesamt

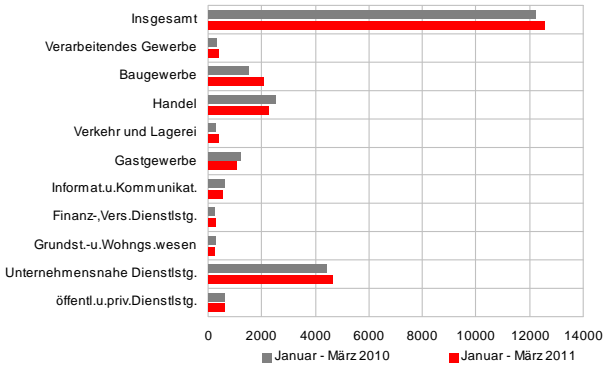


Quelle: Statistisches Landesamt Berlin, eigene Berechnungen

1.6.2011

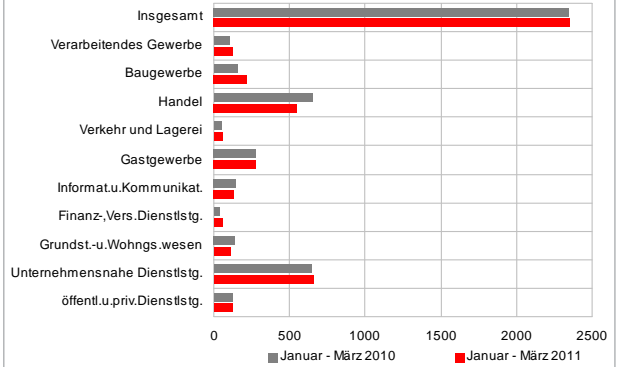


Trends der Gewerbeabmeldungen



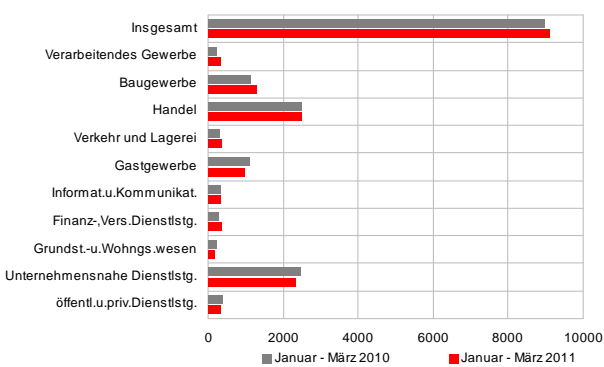
Quelle: Statistisches Landesamt Berlin, eigene Berechnungen) 1.6.2011

Trends der Betriebsgründungen



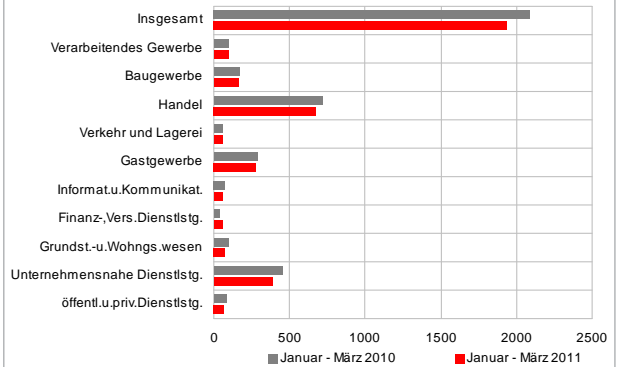
Quelle: Statistisches Landesamt Berlin, eigene Berechnungen) 1.6.2011

Trends der Gewerbeabmeldungen



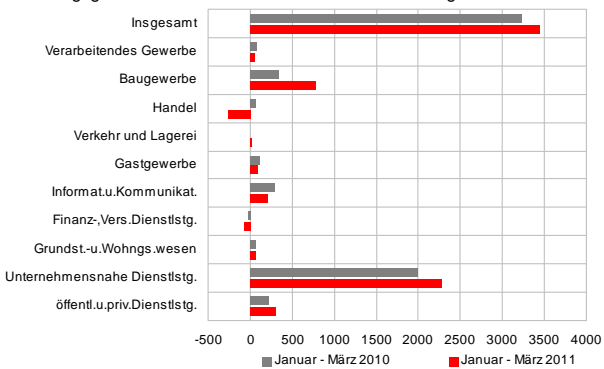
Quelle: Statistisches Landesamt Berlin, eigene Berechnungen) 1.6.2011

Trends der Betriebsaufgaben



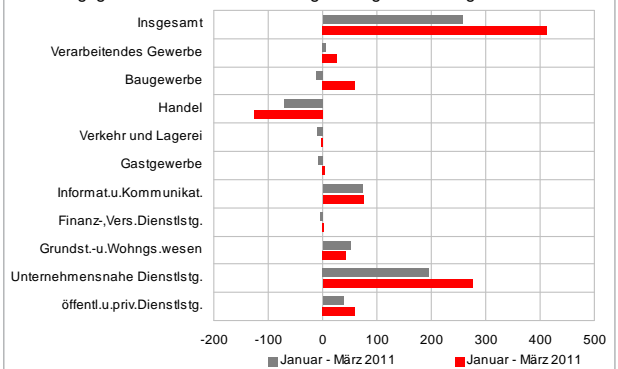
Quelle: Statistisches Landesamt Berlin, eigene Berechnungen) 1.6.2011

Gründungsgeschehen - Saldo Gewerbeab- und abmeldungen



Quelle: Statistisches Landesamt Berlin, eigene Berechnungen) 1.6.2011

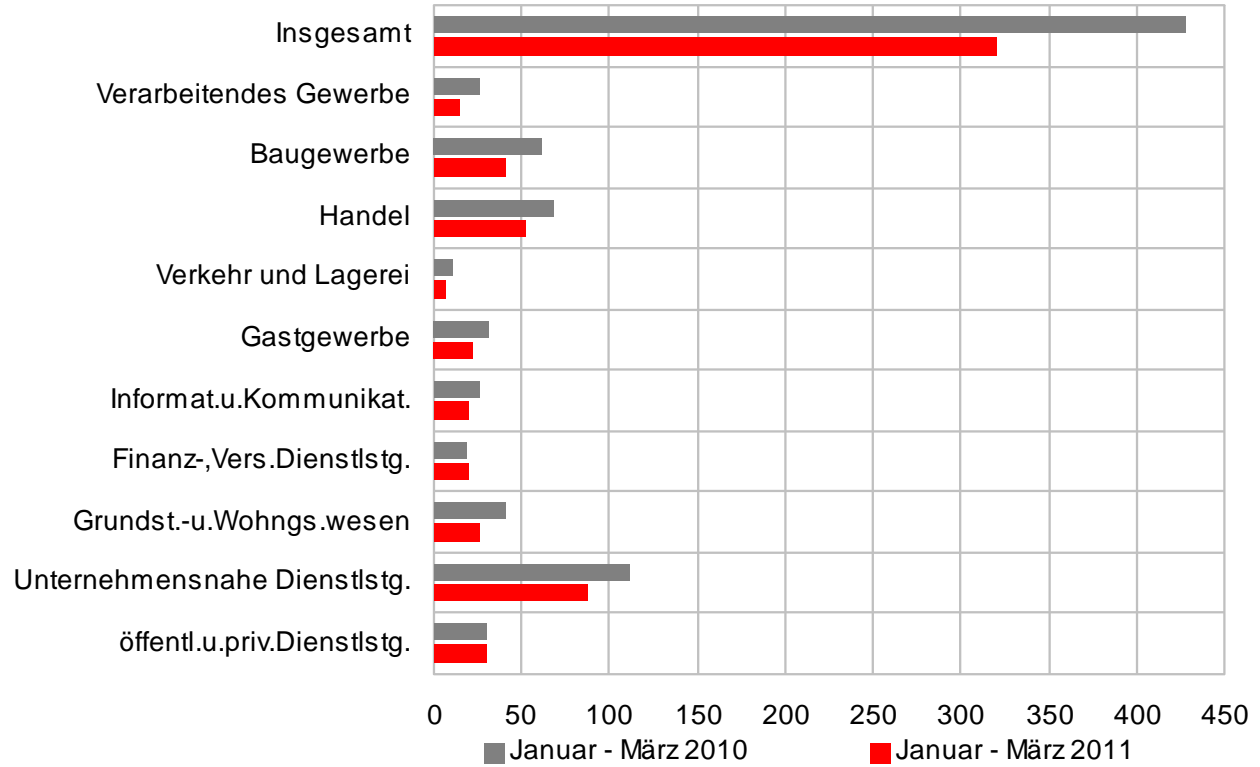
Gründungsgeschehen - Saldo Betriebsgründungen und -aufgaben



Quelle: Statistisches Landesamt Berlin, eigene Berechnungen) 1.6.2011

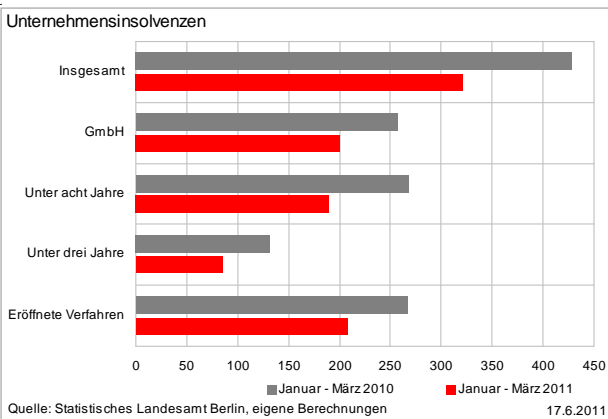
Insolvenzen

Unternehmensinsolvenzen



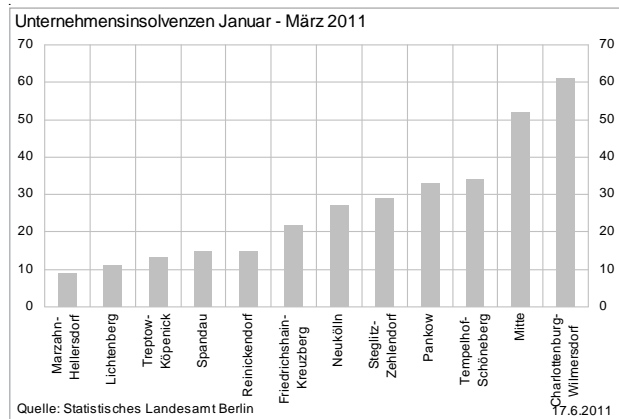
Quelle: Statistisches Landesamt Berlin, eigene Berechnungen

17.6.2011



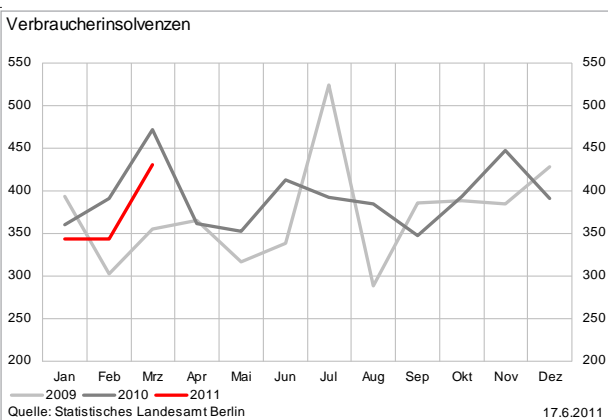
Quelle: Statistisches Landesamt Berlin, eigene Berechnungen

17.6.2011



Quelle: Statistisches Landesamt Berlin

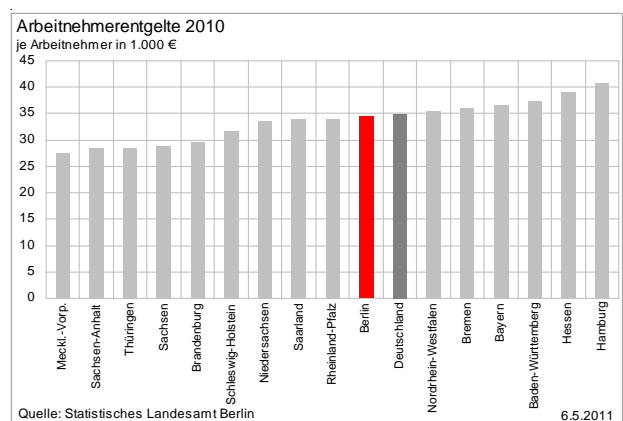
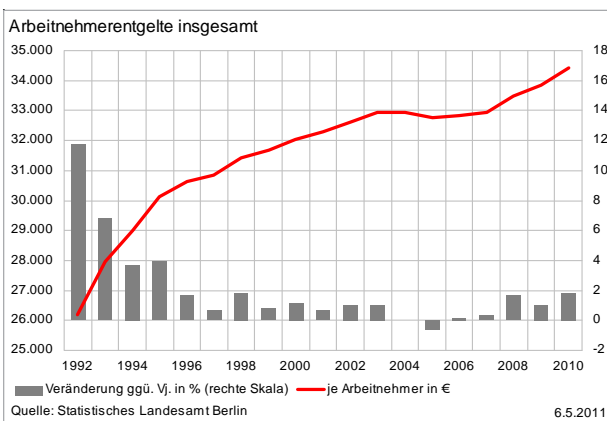
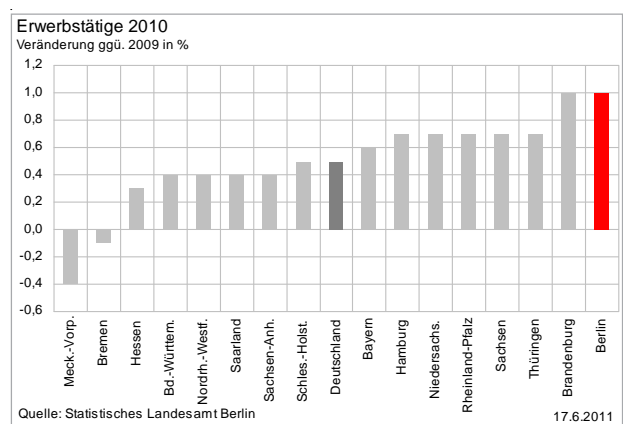
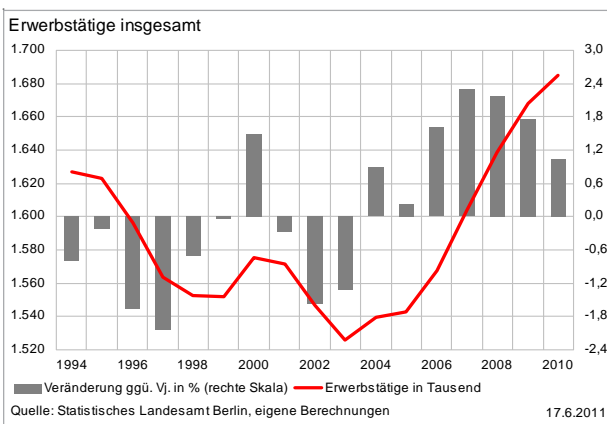
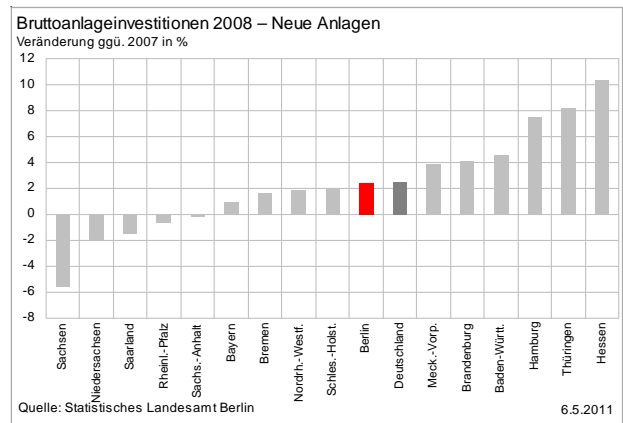
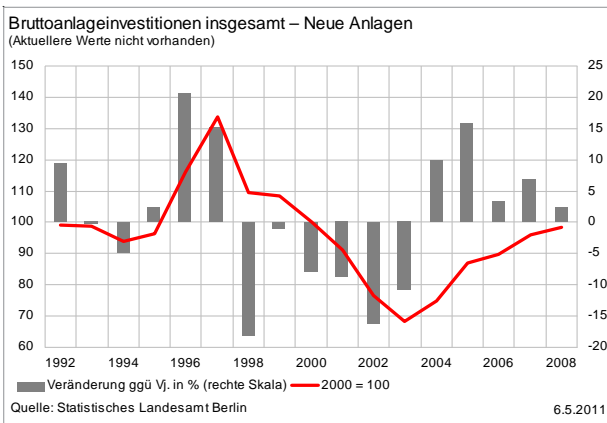
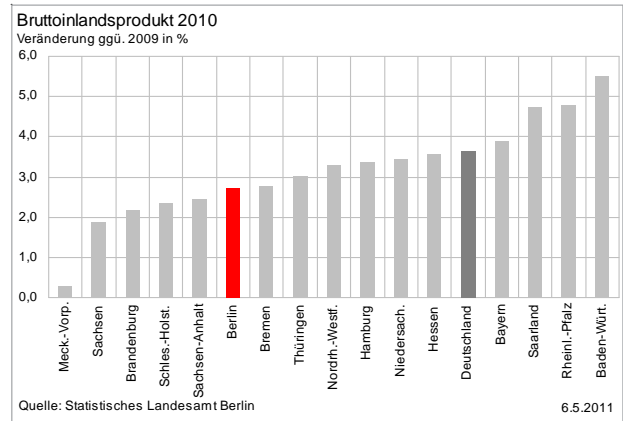
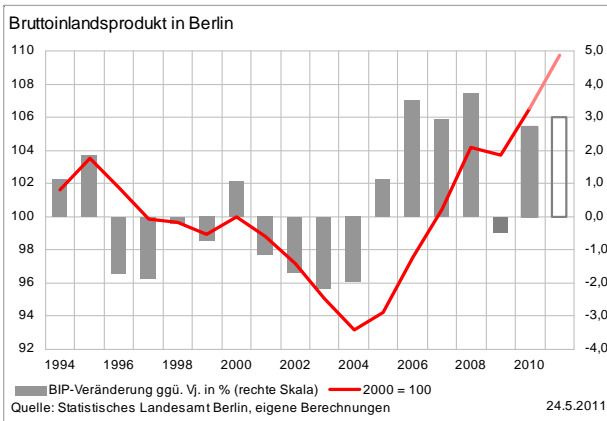
17.6.2011



Quelle: Statistisches Landesamt Berlin

17.6.2011

Wirtschaftsstruktur



Herausgeber:
Investitionsbank Berlin
Volkswirtschaft
Hartmut Mertens
Telefon 030/21 25 47 38
Telefax 030/21 25 38 03