

Berlin Wirtschaftliche Trends

24. Mai 2011

Inhalt

Konjunktur-Tendenzen	5
Industrie	6
Baugewerbe	12
Einzelhandel	16
Gastgewerbe	17
Tourismus	18
Ein- und Ausfuhr	20
Arbeitsmarkt	22
Gründungsgeschehen	24
Unternehmensinsolvenzen	26
Wirtschaftsstruktur	27

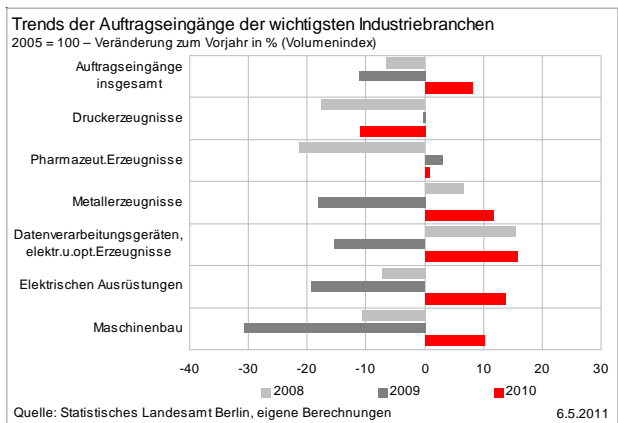
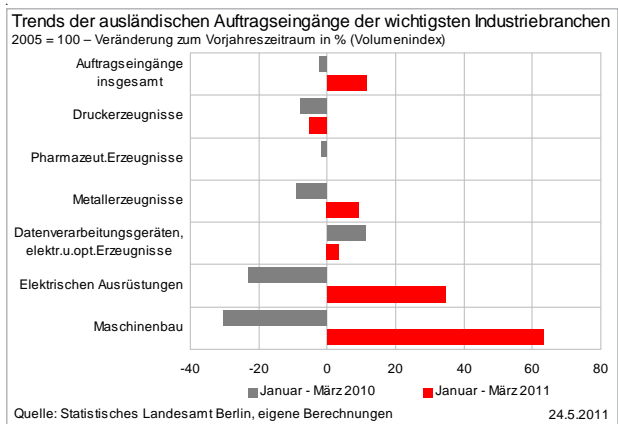
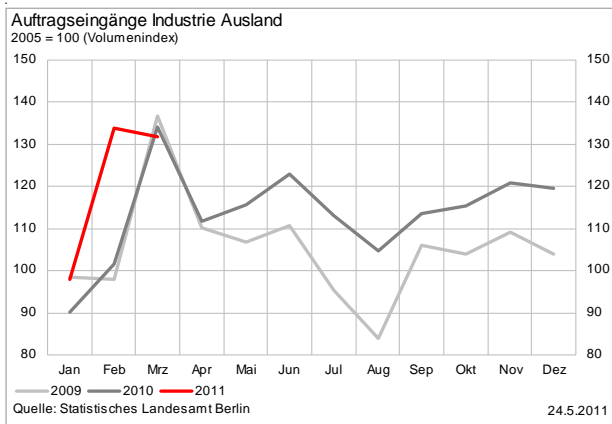
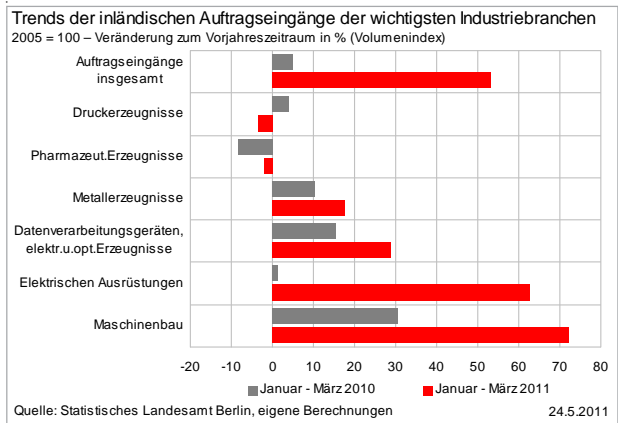
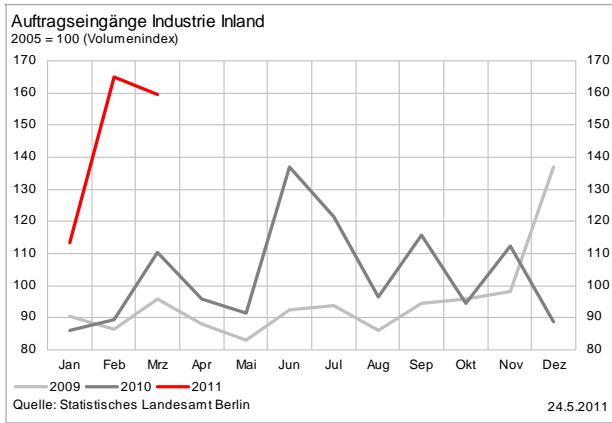
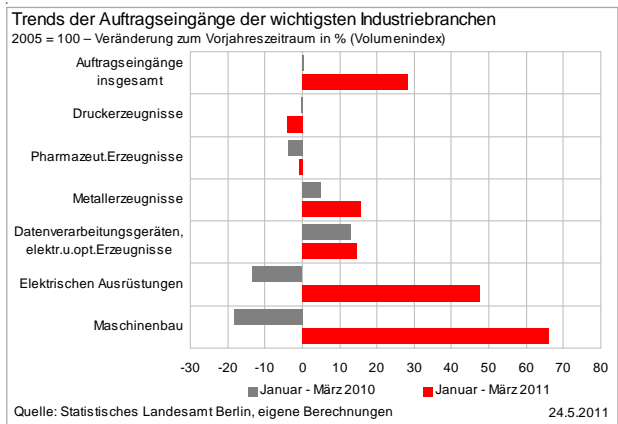
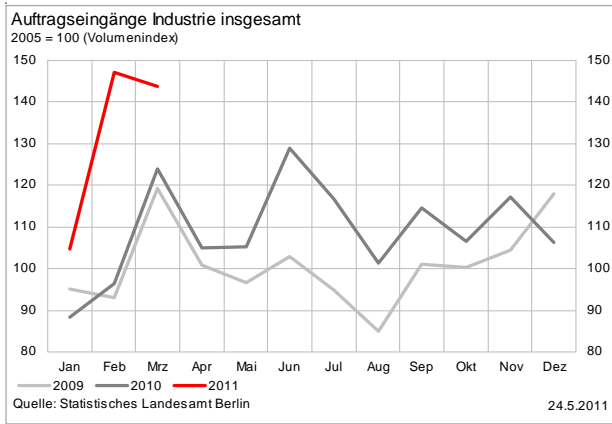
Konjunktur-Tendenzen

Merkmal	Veränderung zum Vorjahreszeitraum in %		
	Januar - Februar		
	2009	2010	2011
Auftragseingang			
Verarbeitendes Gewerbe	-	=	++
Bauhauptgewerbe	+	++	+
Gesamtumsatz			
Verarbeitendes Gewerbe	=	-	+
darunter: Nahrungs- und Futtermittel	=	--	+
Druckerzeugnisse	+	=	+
Pharmazeut.Erzeugnisse	++	-	=
Metallerzeugnisse	-	=	+
Datenverarb.geräte, elektr.u.opt.Erzg.	+	-	-
Elektrische Ausrüstungen	--	+	++
Maschinenbau	-	--	++
Bauhauptgewerbe	--	-	++
darunter: Wohnungsbau	--	+	++
Wirtschaftsbau	-	--	++
Öffentlicher Bau	--	++	=
Auslandsumsatz			
Verarbeitendes Gewerbe	+	-	+
darunter: Nahrungs- und Futtermittel	=	-	+
Druckerzeugnisse	n.v.	n.v.	n.v.
Pharmazeut.Erzeugnisse	n.v.	n.v.	=
Metallerzeugnisse	-	-	+
Datenverarb.geräte, elektr.u.opt.Erzg.	=	+	-
Elektrische Ausrüstungen	=	+	-
Maschinenbau	-	--	++
Beschäftigte			
Verarbeitendes Gewerbe	=	=	+
Bauhauptgewerbe	=	+	+

> 20 %: ++	> -20% < -2%: -
> 2% < 20%: +	< -20%: --
> -2% < 2%: =	kein Wert: n.v.

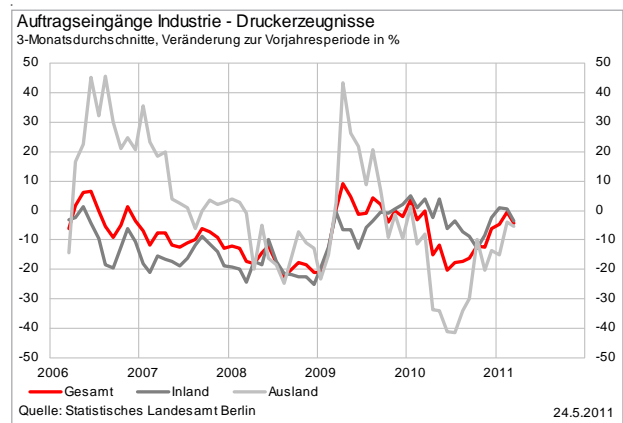
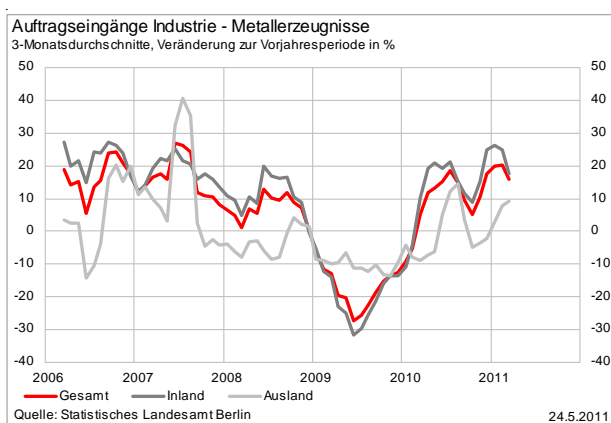
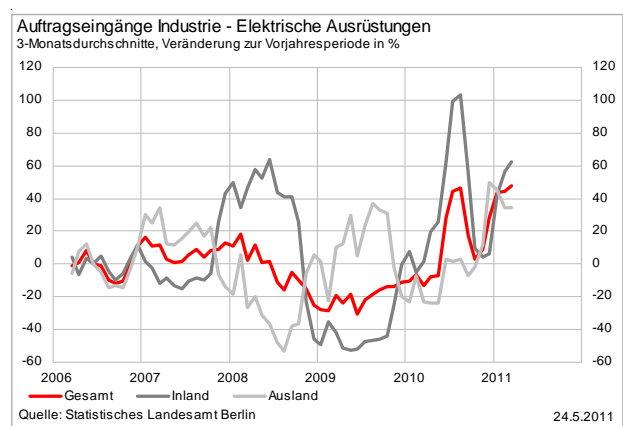
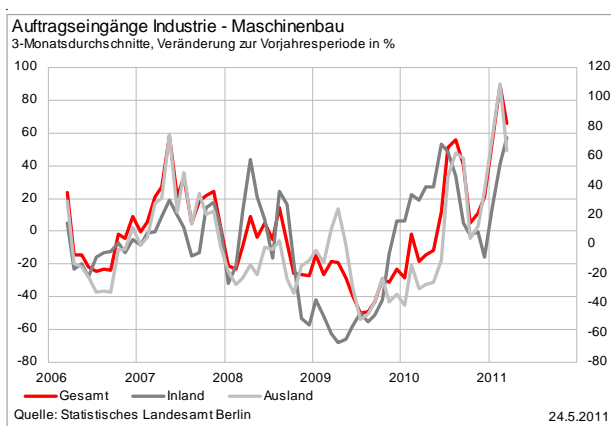
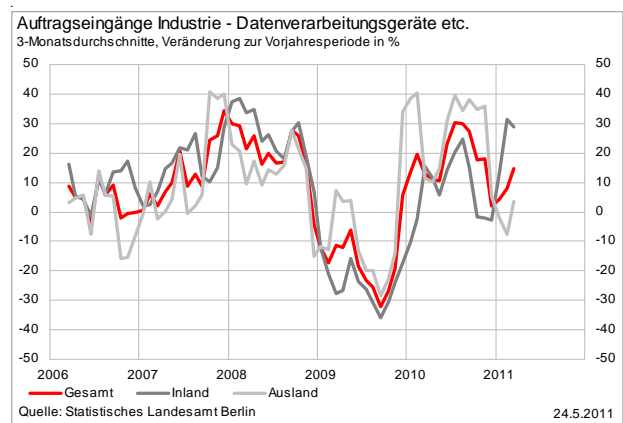
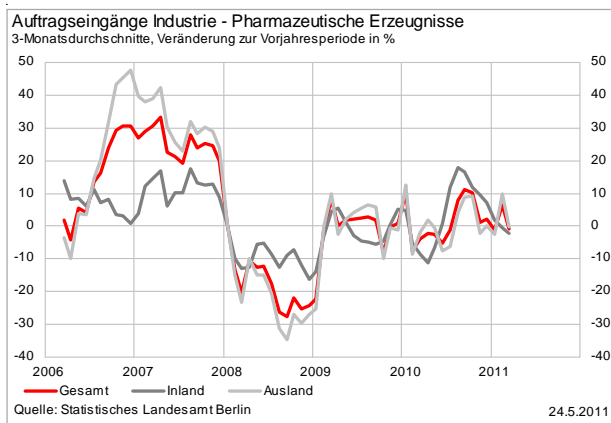
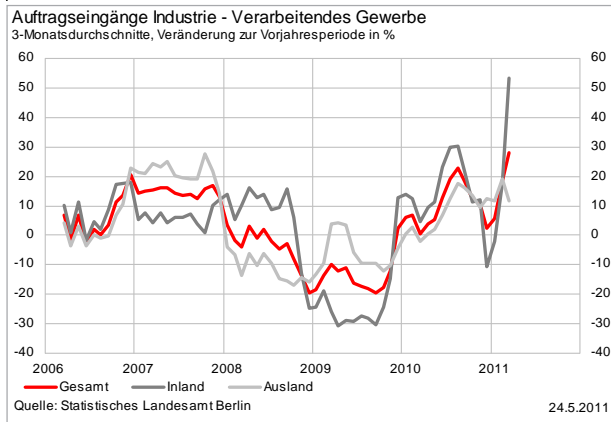
Industrie - Auftragseingänge

(Durch die Änderung der Systematik der Wirtschaftszweige ist ein Vergleich mit den Vorjahren nur eingeschränkt möglich)



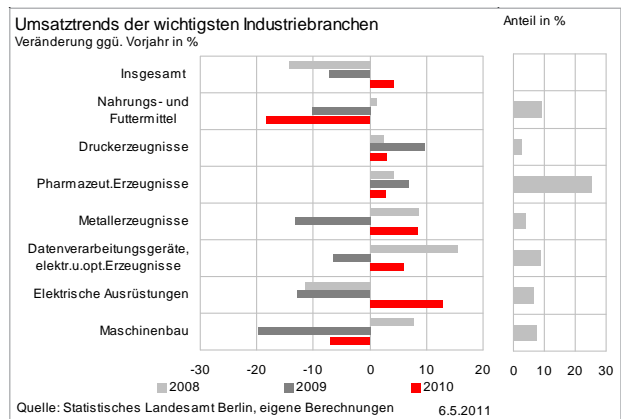
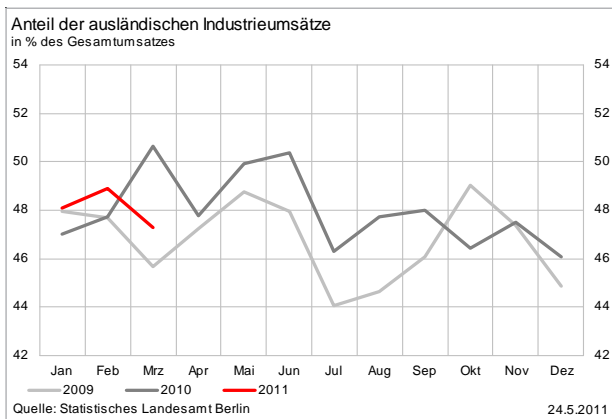
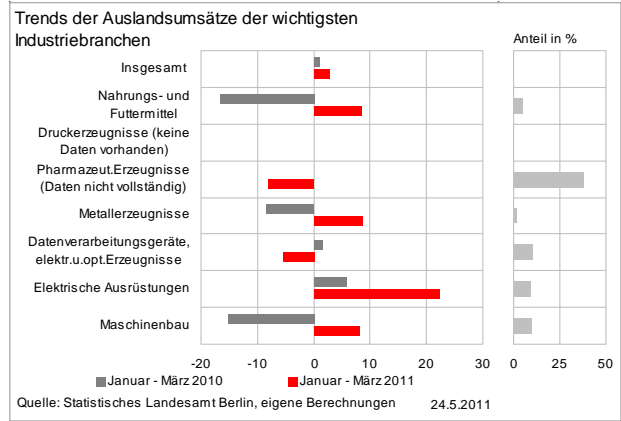
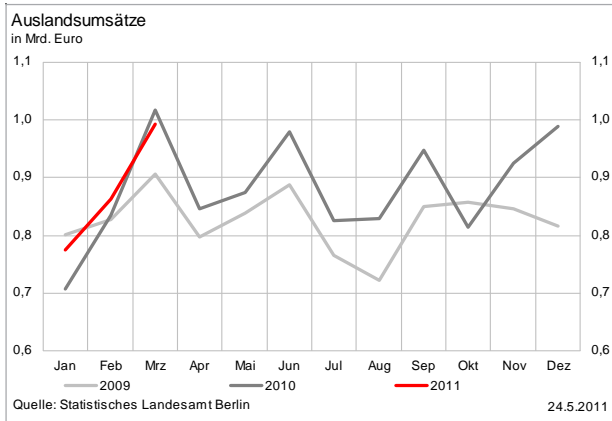
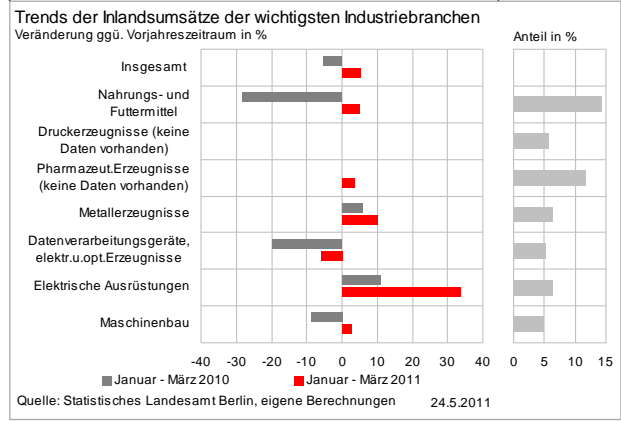
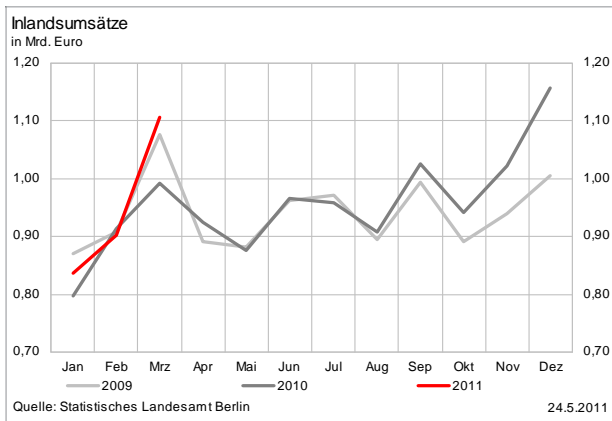
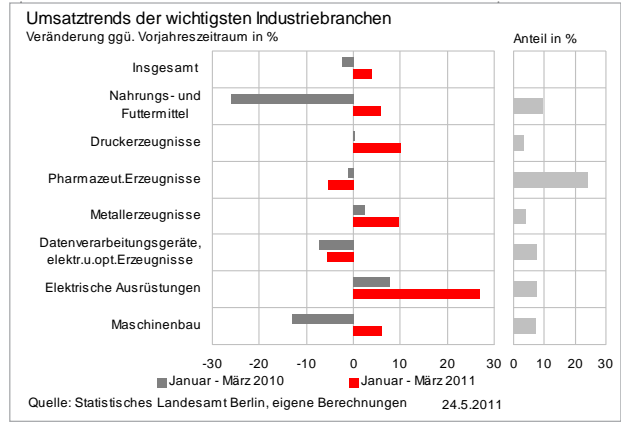
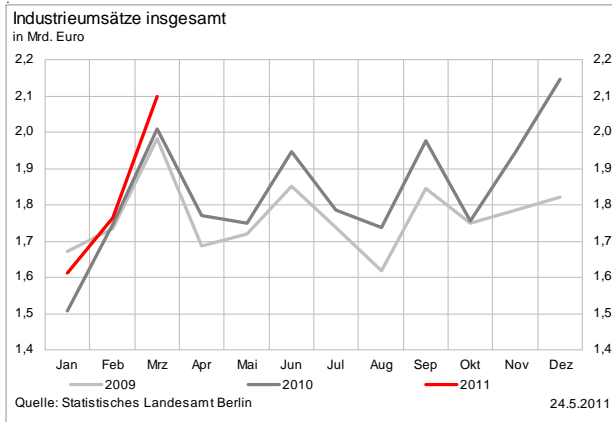
Industrie - Auftragseingänge

(Durch die Änderung der Systematik der Wirtschaftszweige ist ein Vergleich mit den Vorjahren nur eingeschränkt möglich)



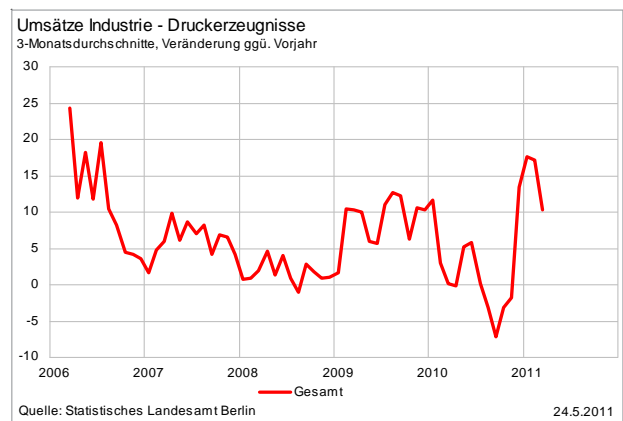
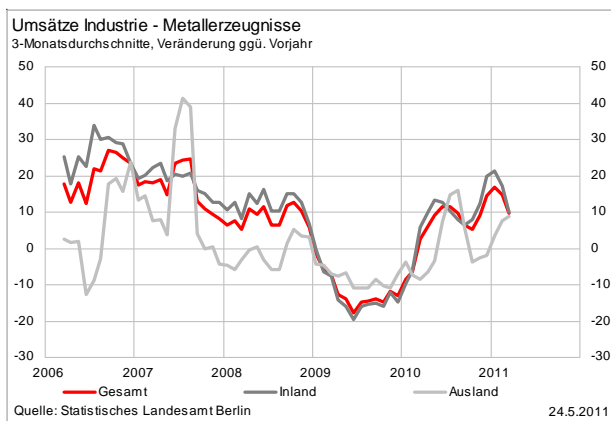
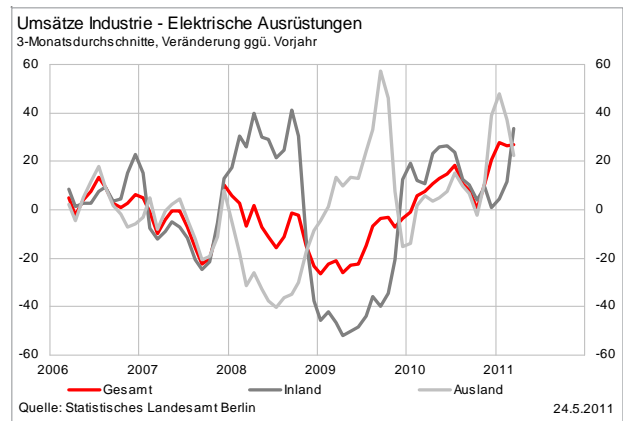
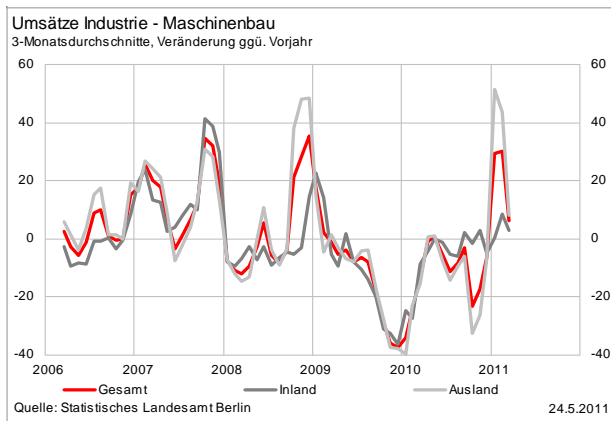
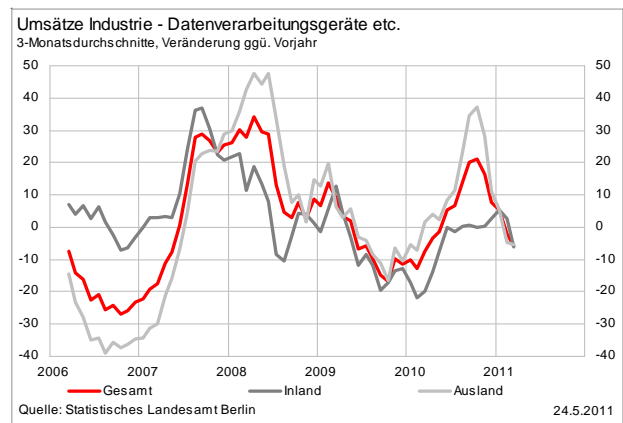
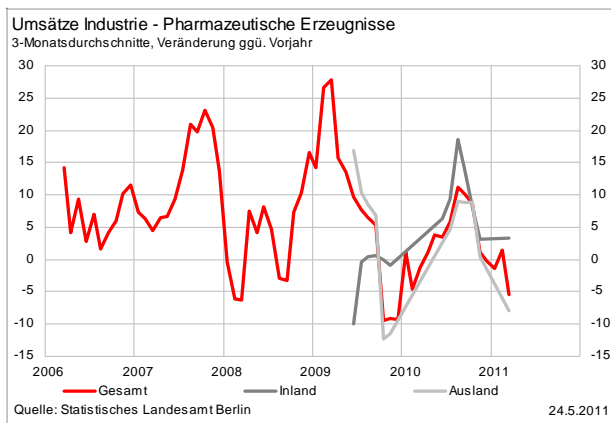
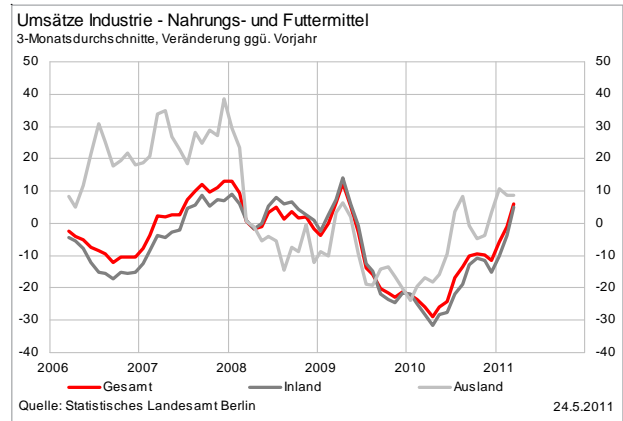
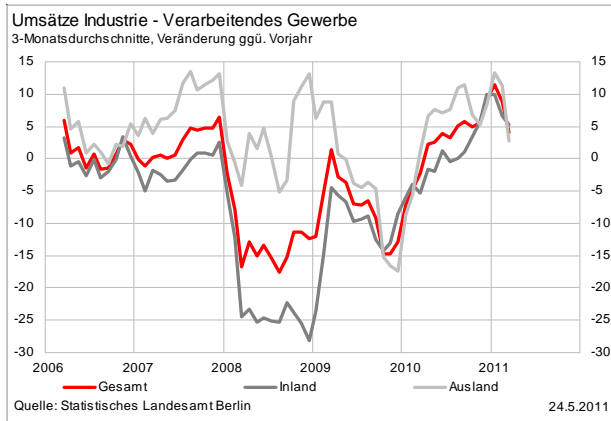
Industrie - Umsätze

(Durch die Änderung der Systematik der Wirtschaftszweige ist ein Vergleich mit den Vorjahren nur eingeschränkt möglich)



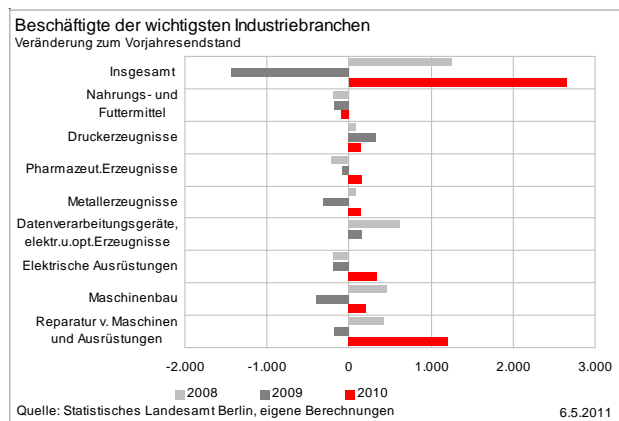
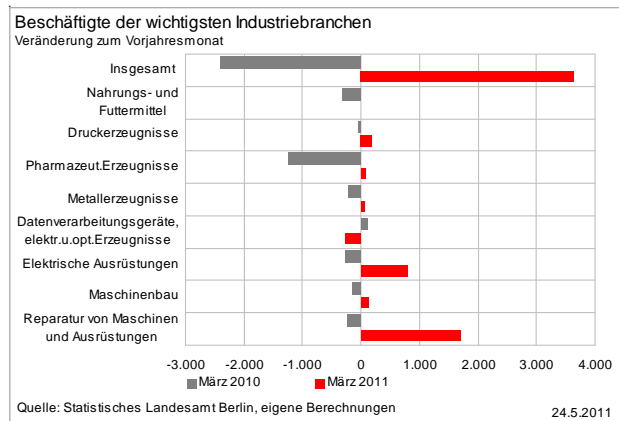
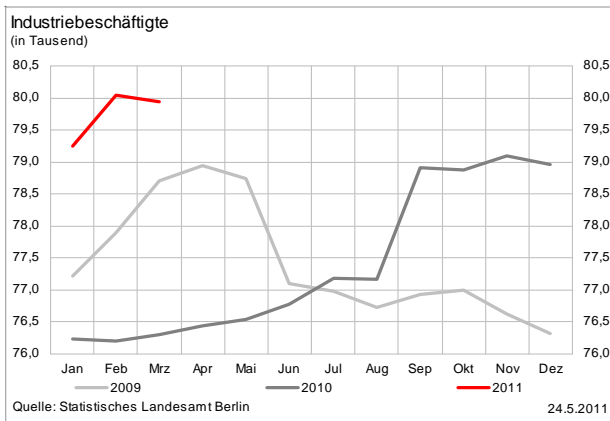
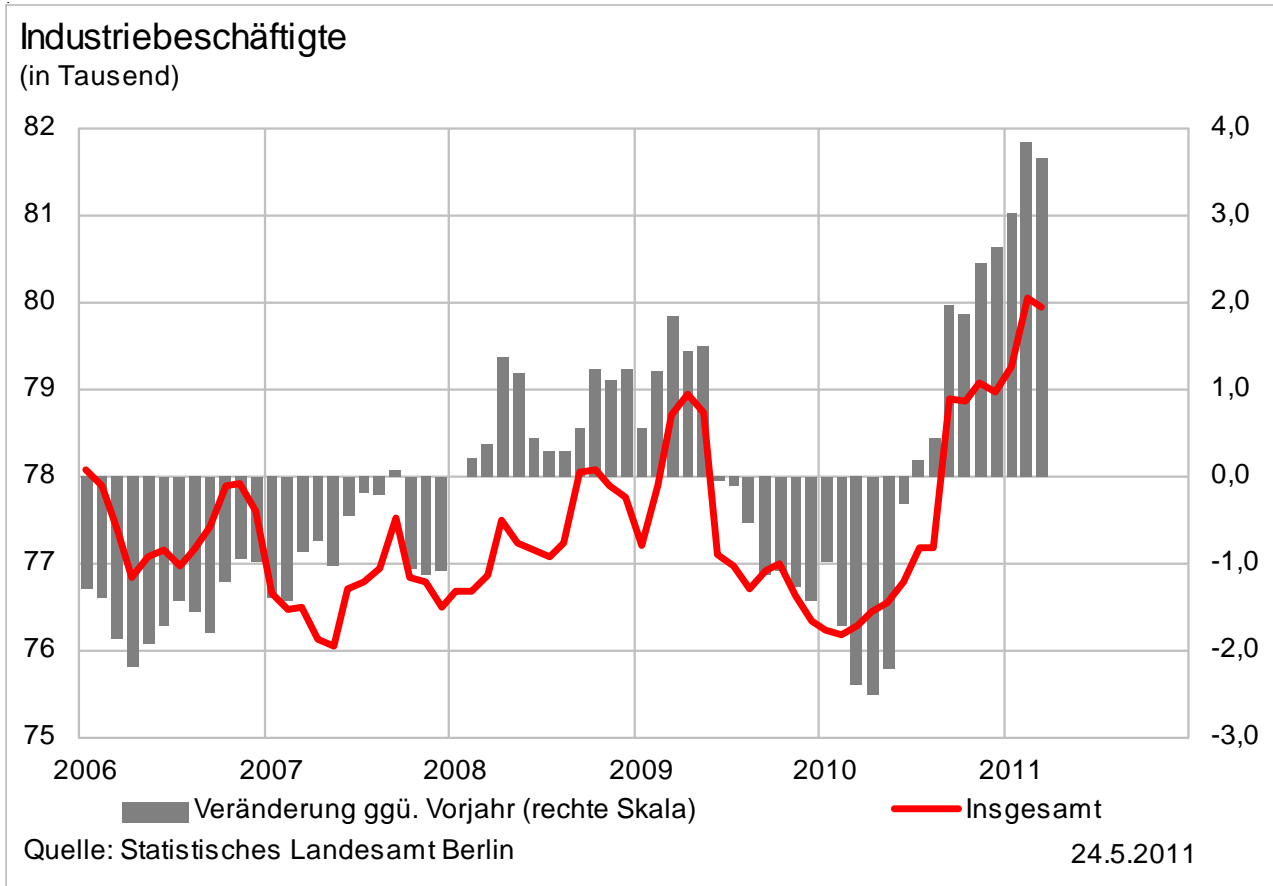
Industrie - Umsätze

(Durch die Änderung der Systematik der Wirtschaftszweige ist ein Vergleich mit den Vorjahren nur eingeschränkt möglich)



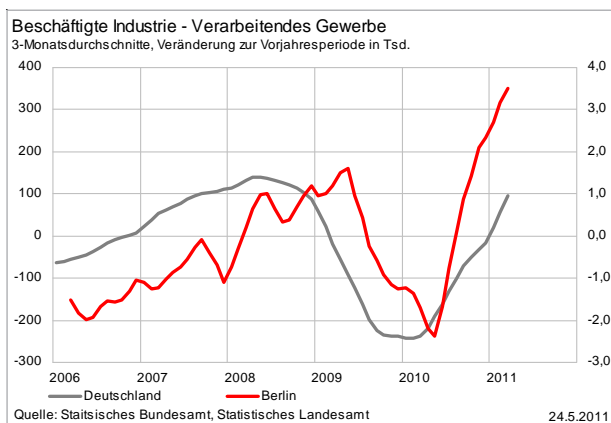
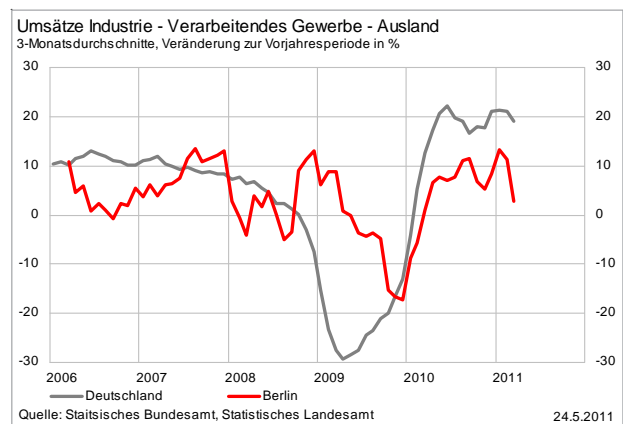
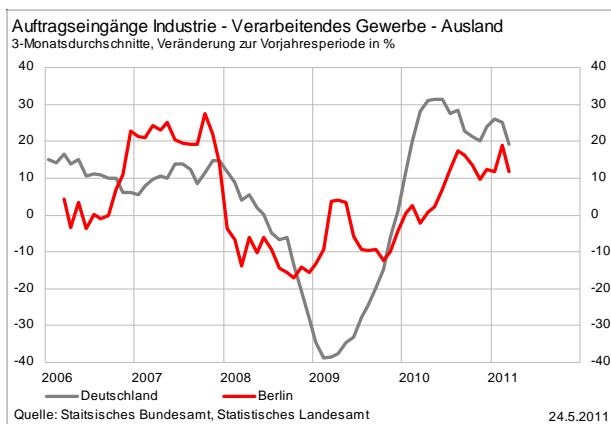
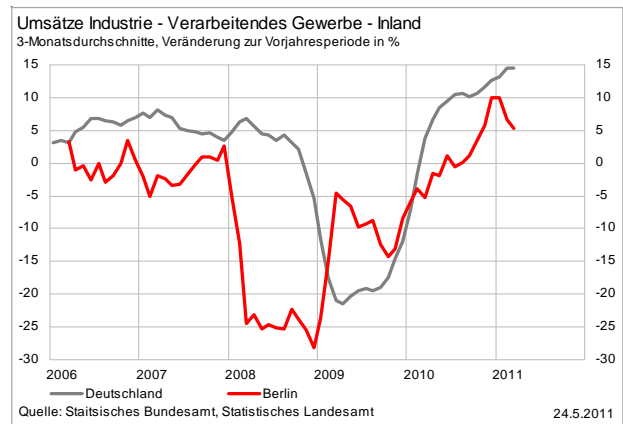
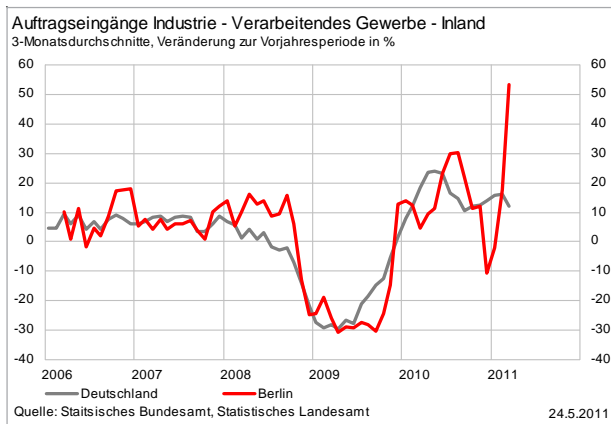
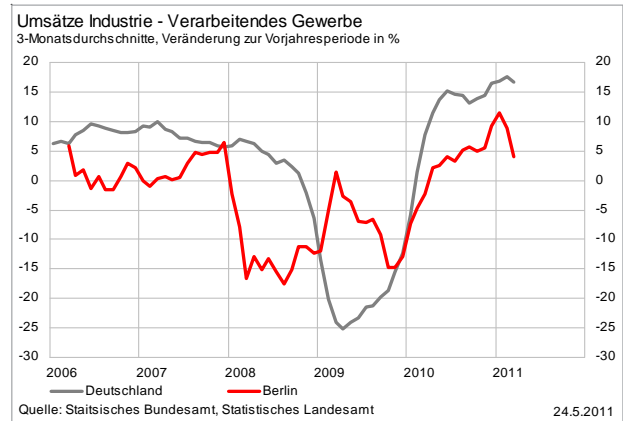
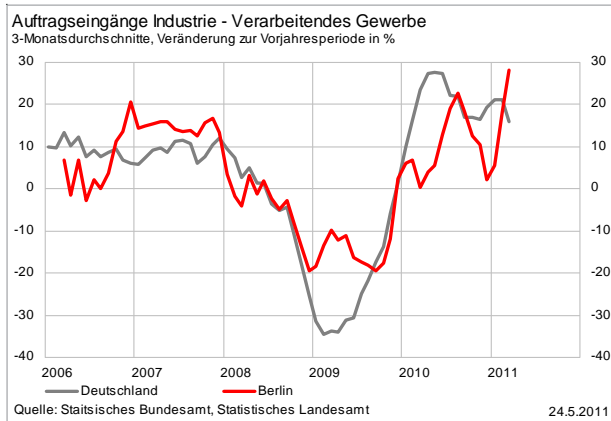
Industrie - Beschäftigte

(Durch die Änderung der Systematik der Wirtschaftszweige ist ein Vergleich mit den Vorjahren nur eingeschränkt möglich)

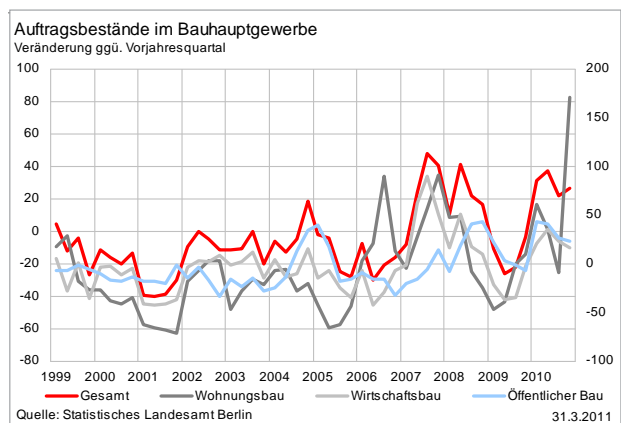
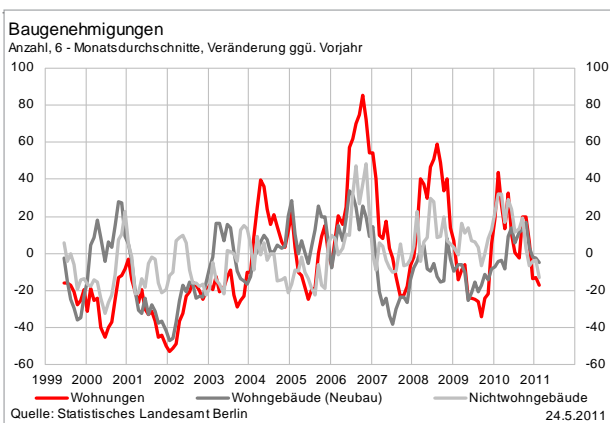
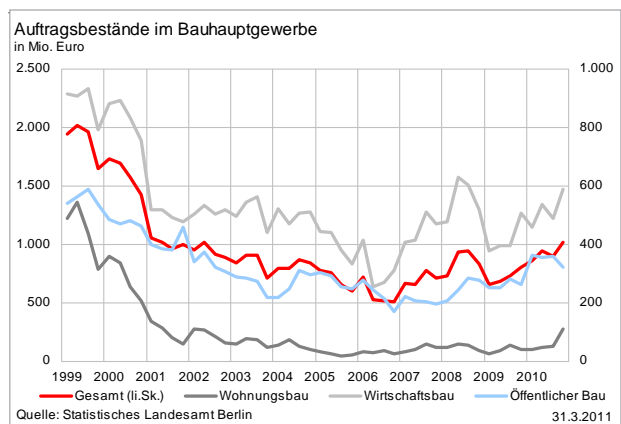
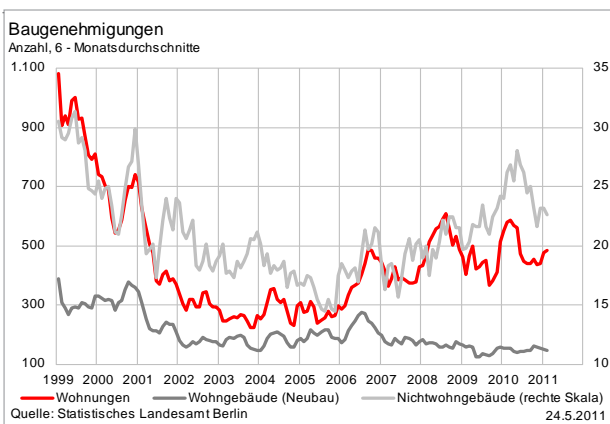
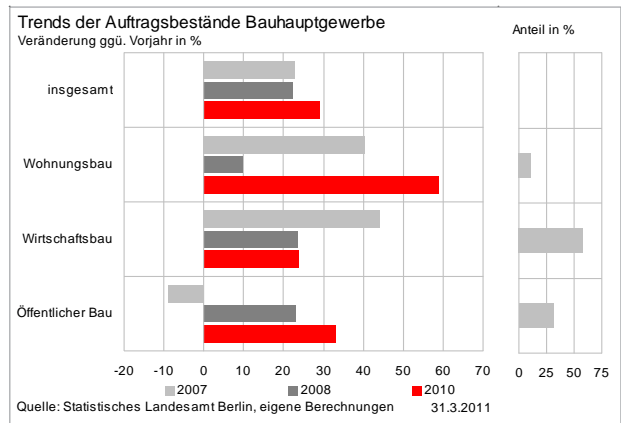
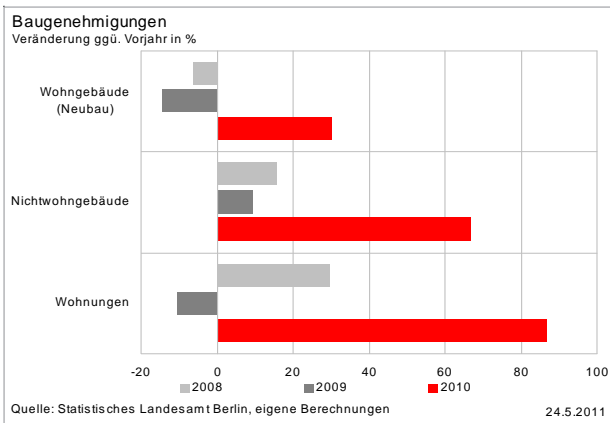
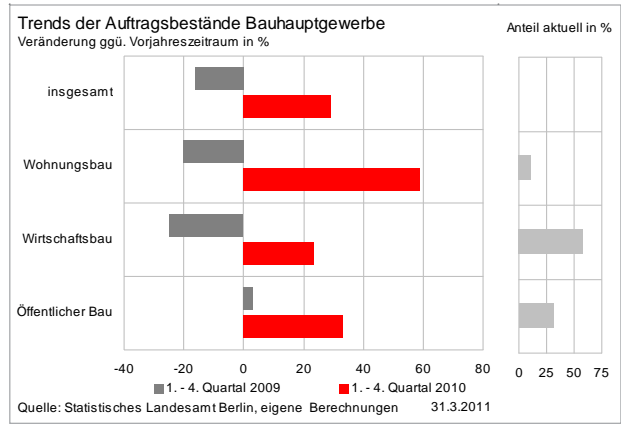
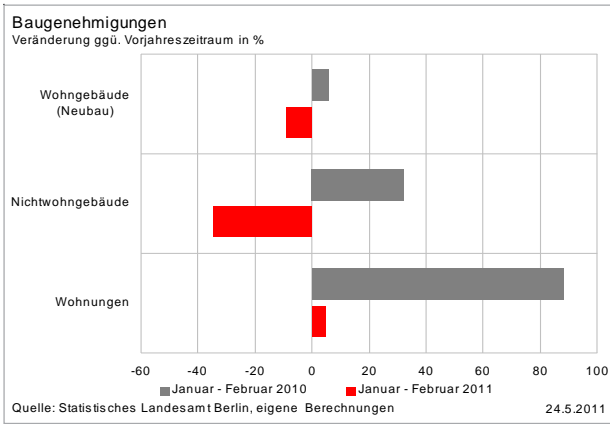


Industrie - Berlin im Deutschland-Vergleich

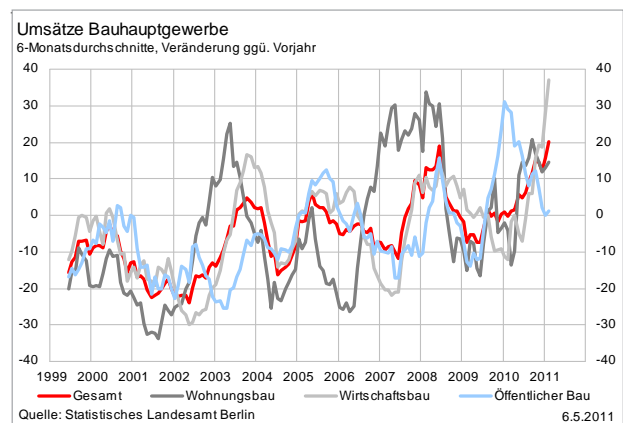
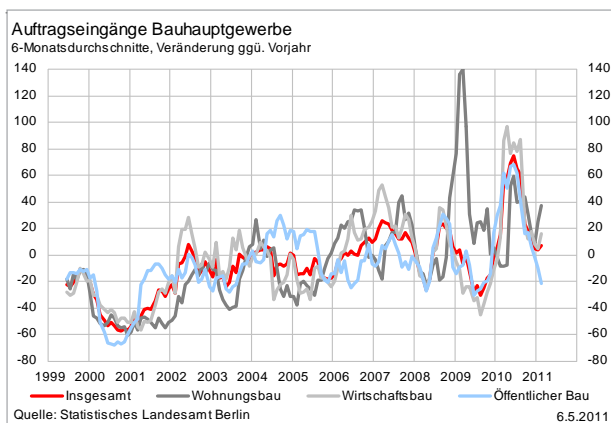
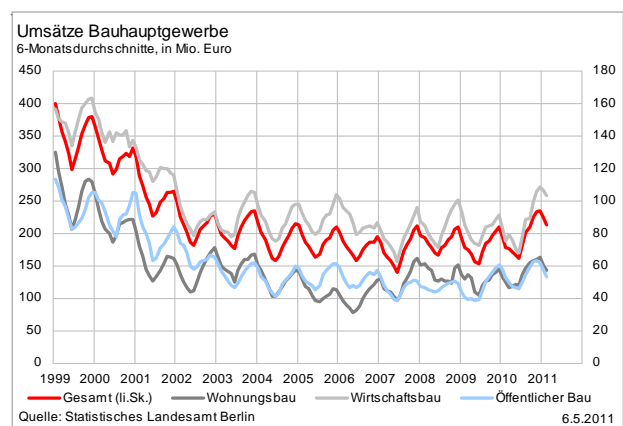
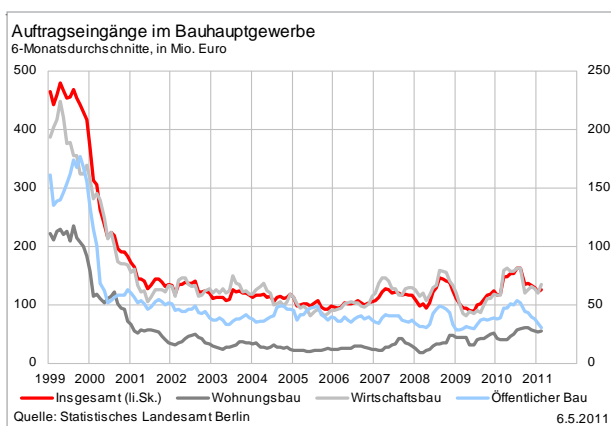
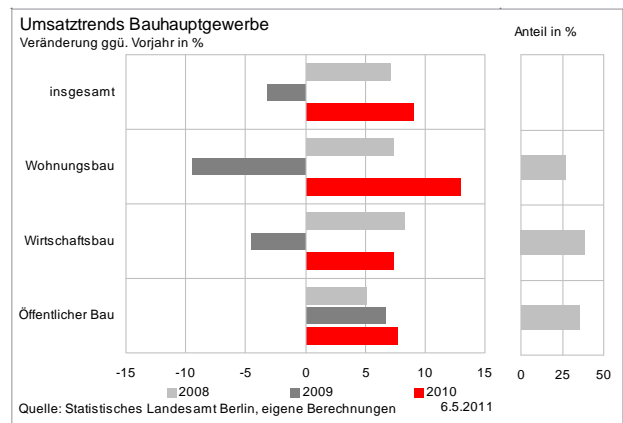
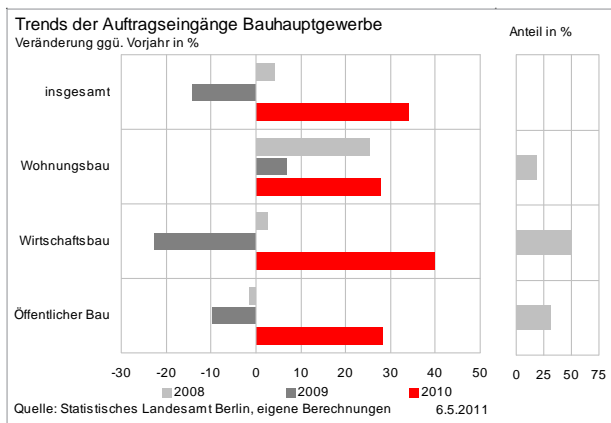
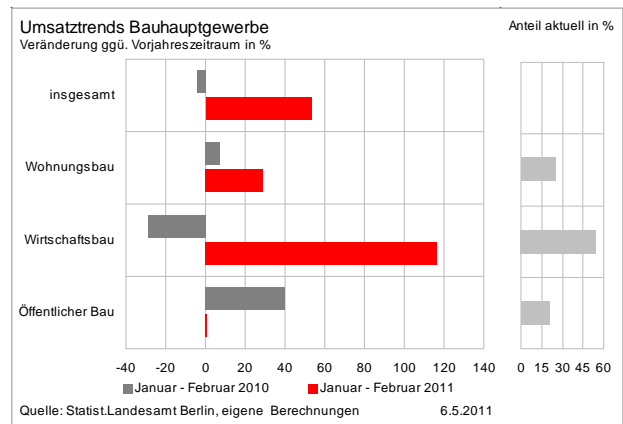
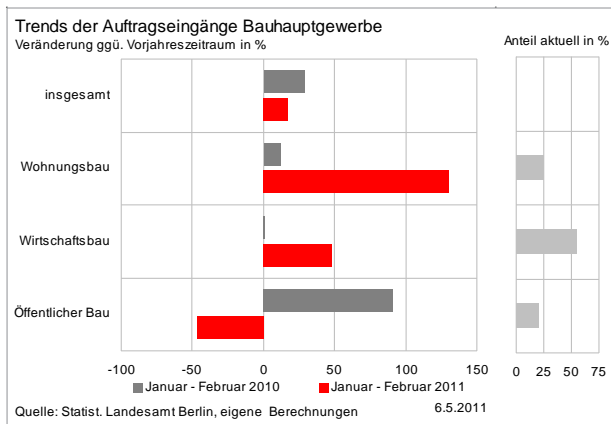
(Durch die Änderung der Systematik der Wirtschaftszweige ist ein Vergleich mit den Vorjahren nur eingeschränkt möglich)



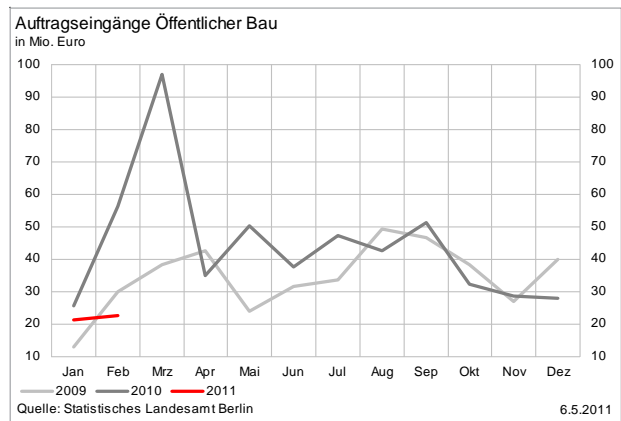
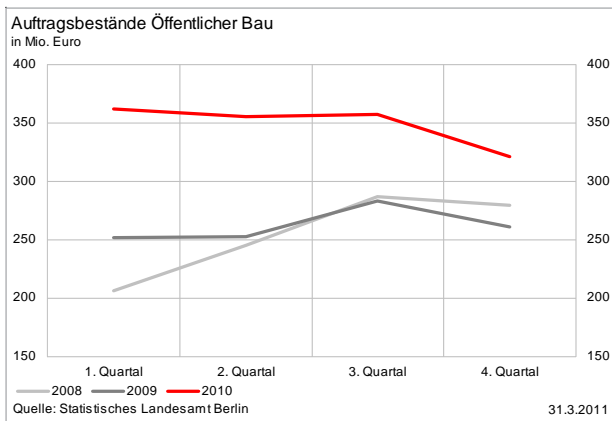
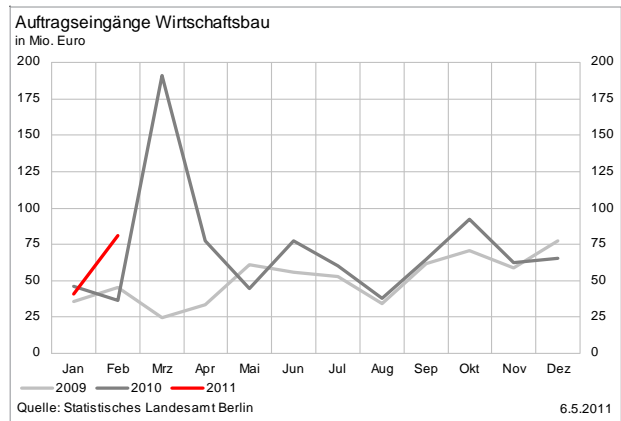
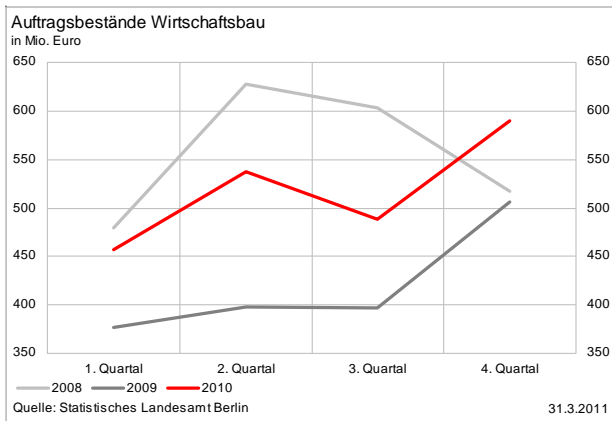
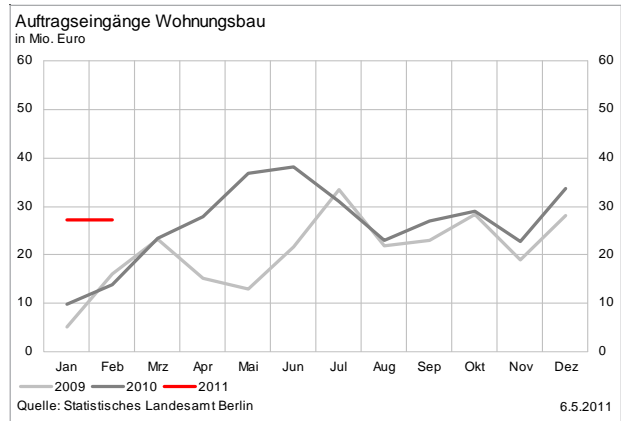
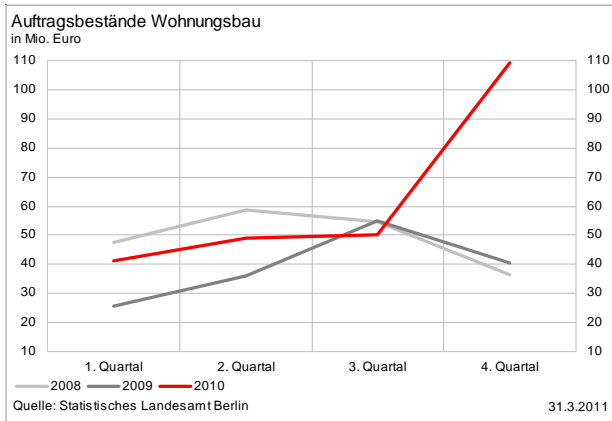
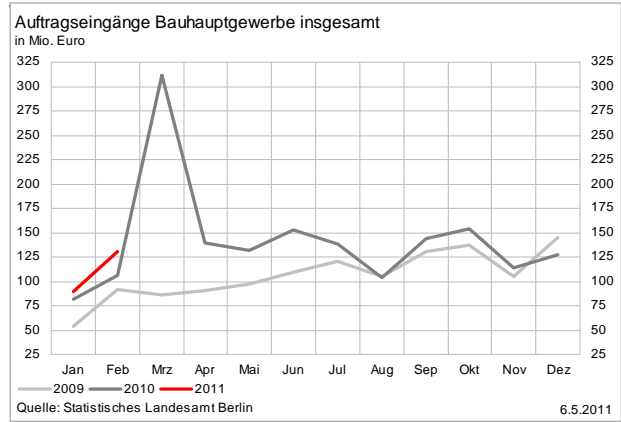
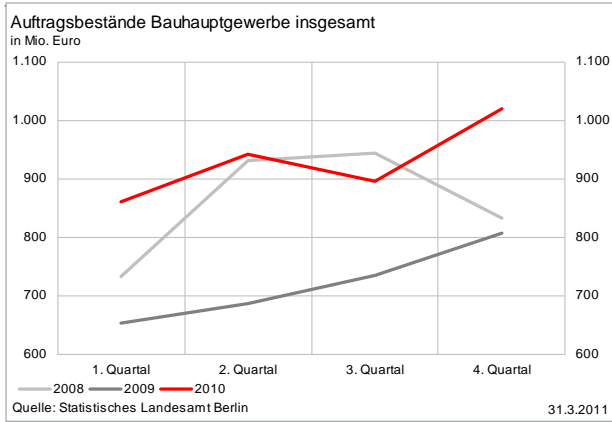
Baugewerbe



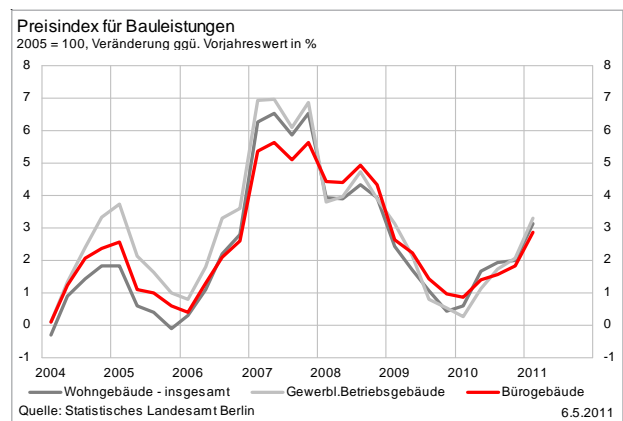
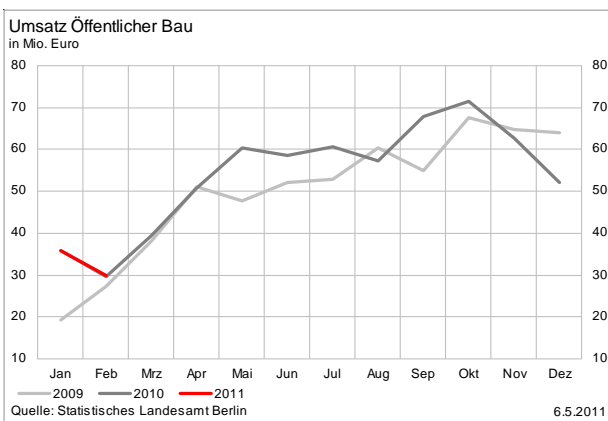
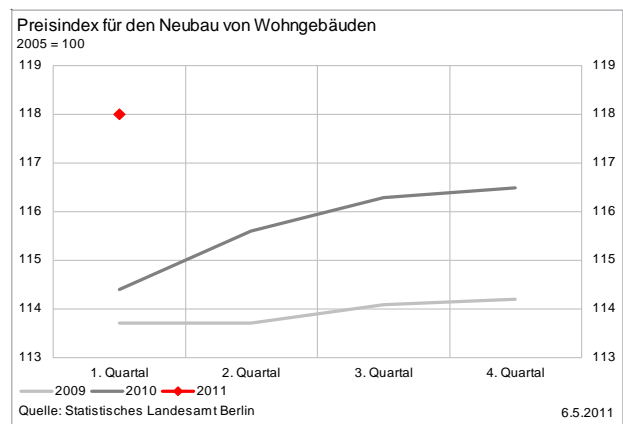
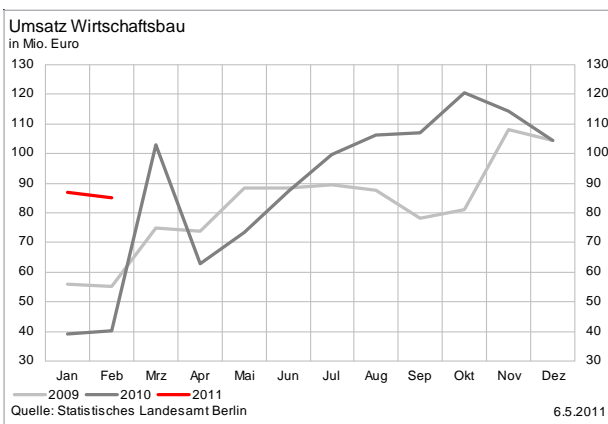
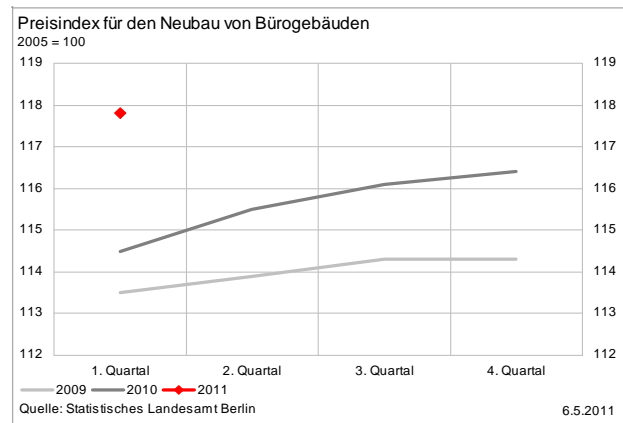
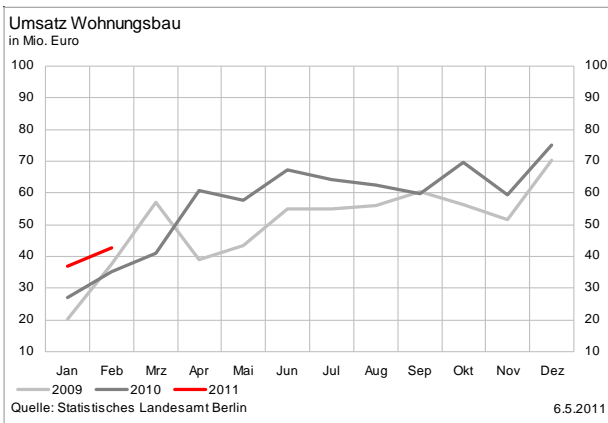
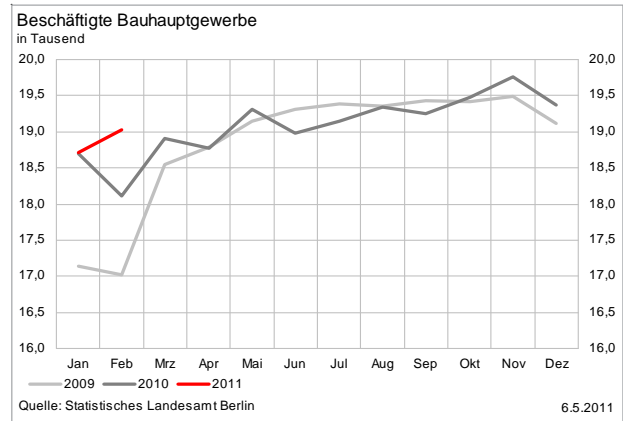
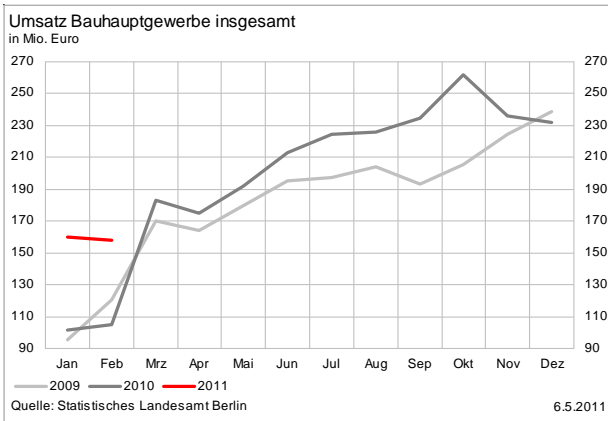
Baugewerbe



Baugewerbe

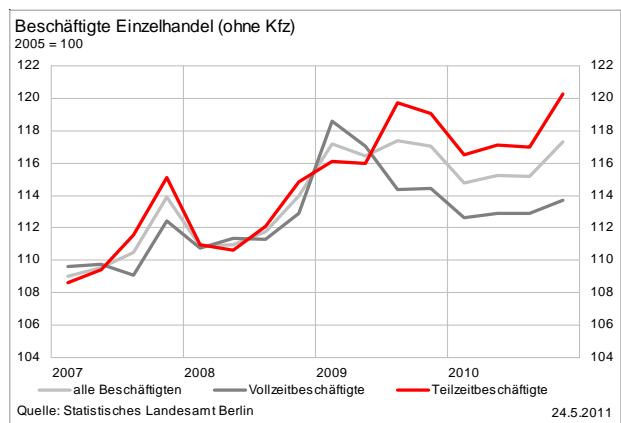
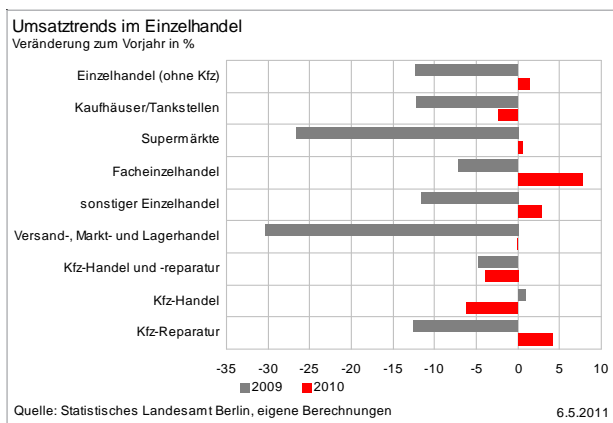
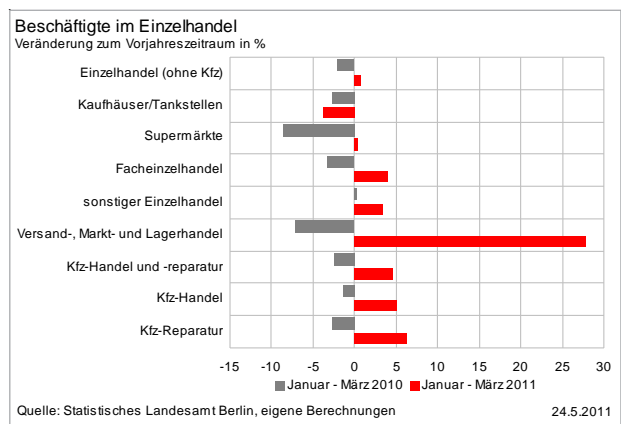
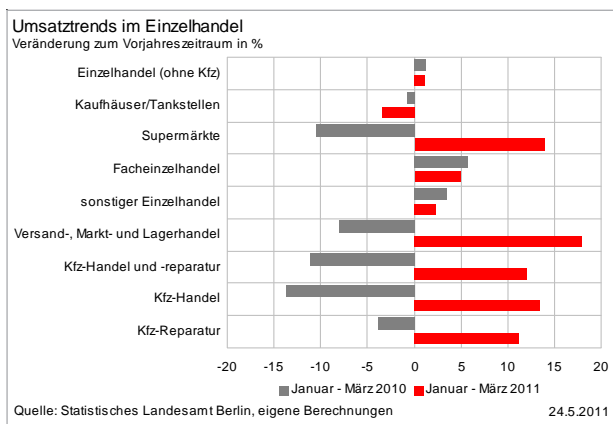
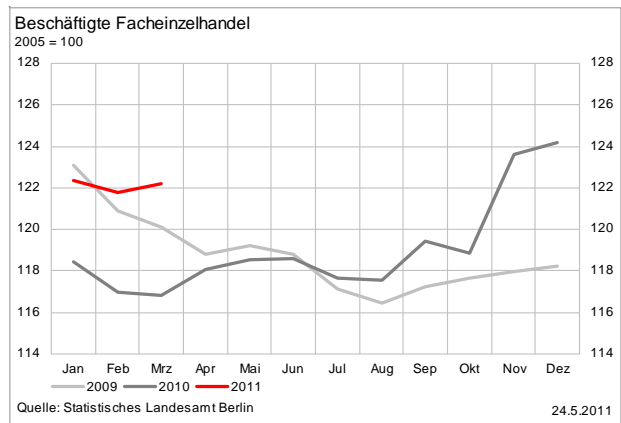
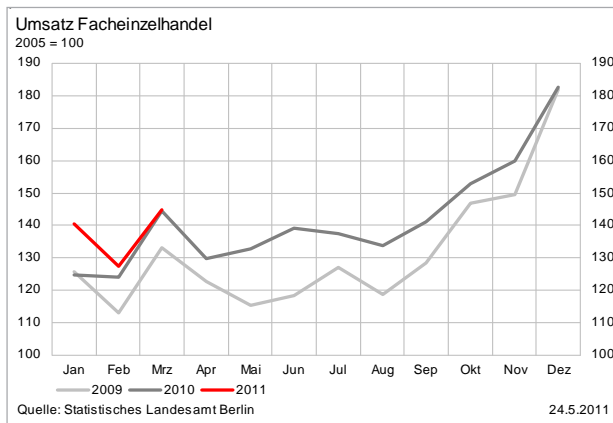
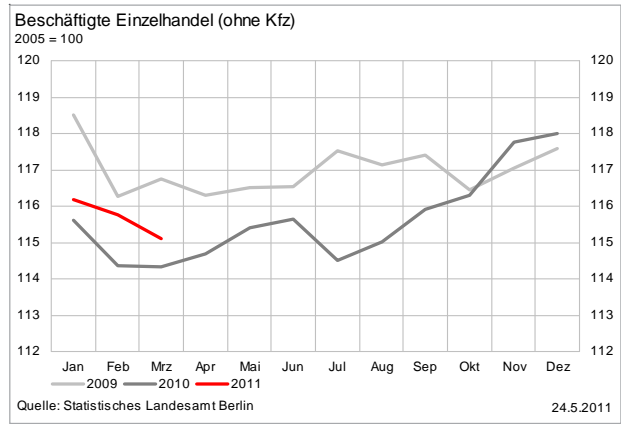
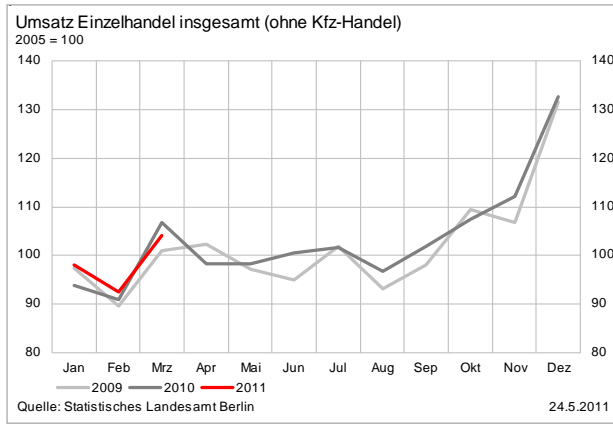


Baugewerbe



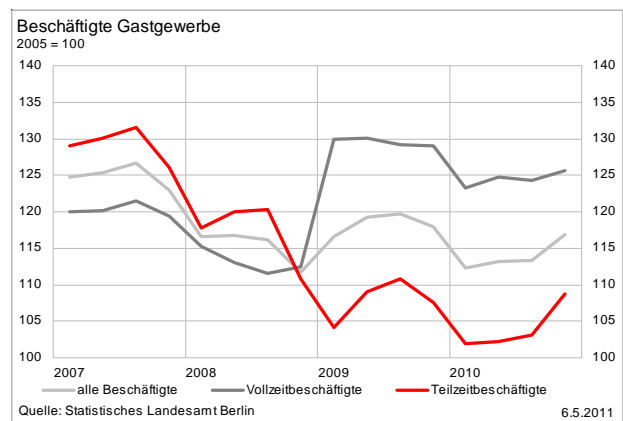
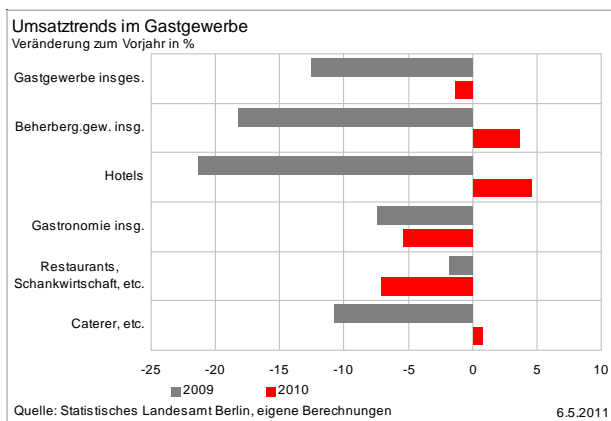
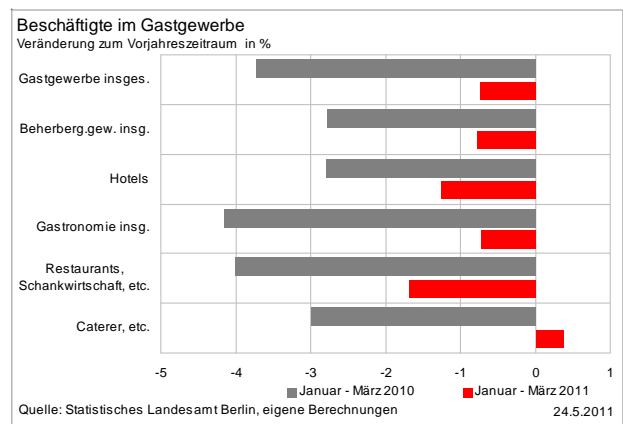
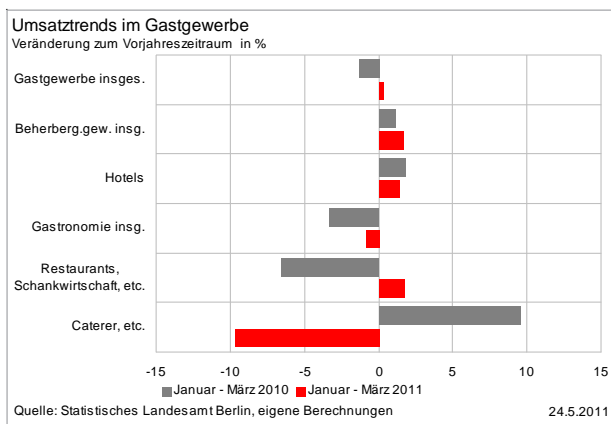
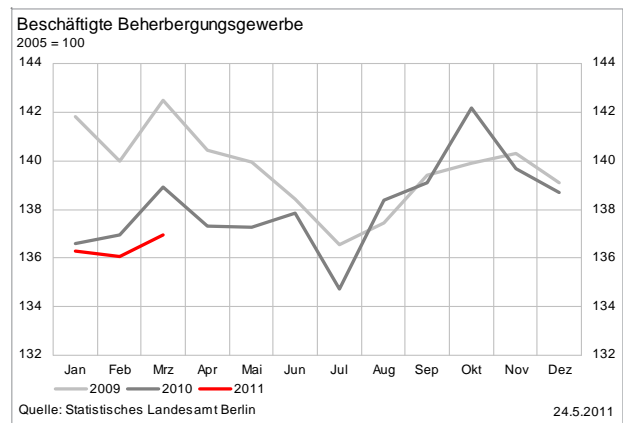
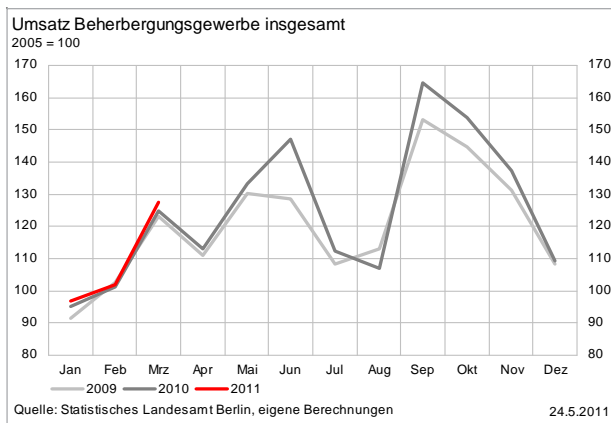
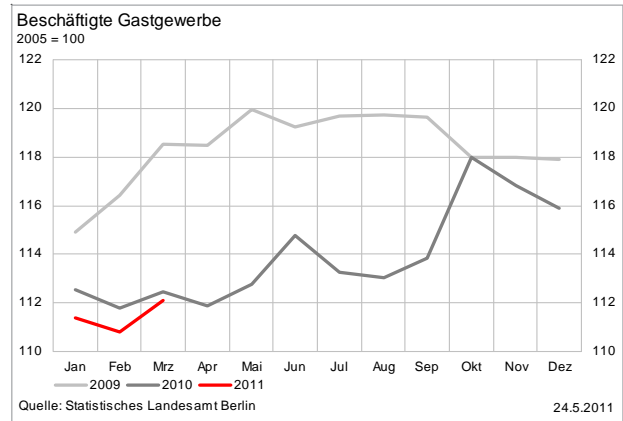
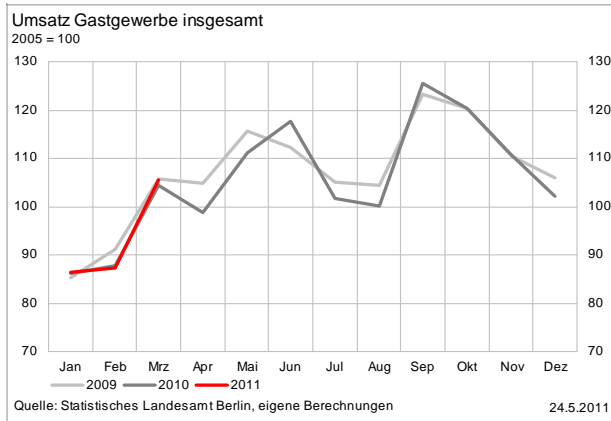
Einzelhandel

(Durch die Änderung der Systematik der Wirtschaftszweige ist ein Vergleich mit den Vorjahren nur eingeschränkt möglich)

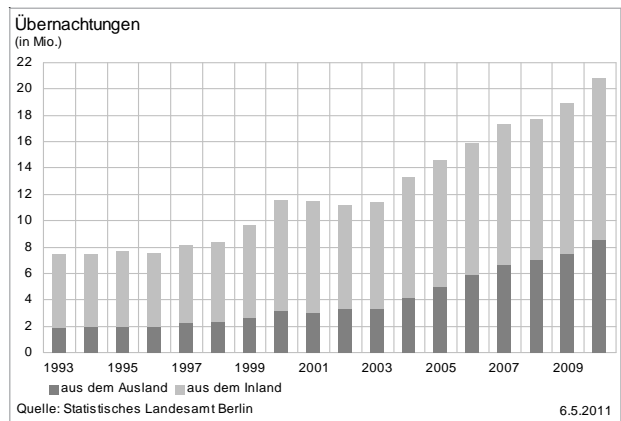
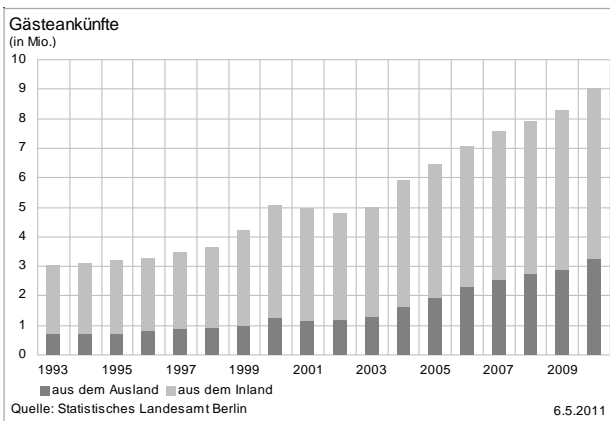
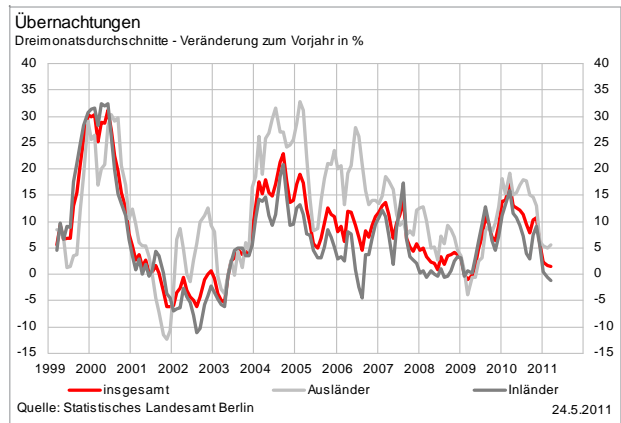
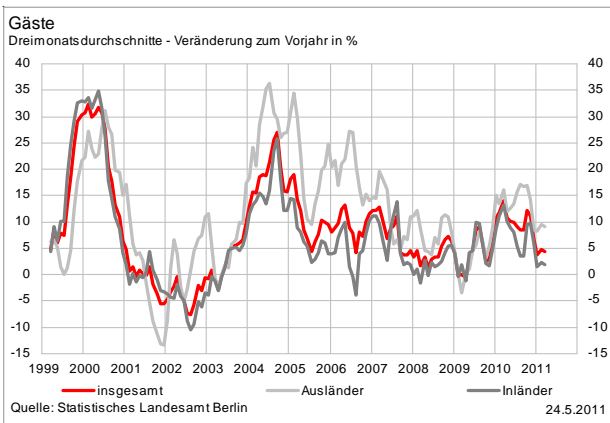
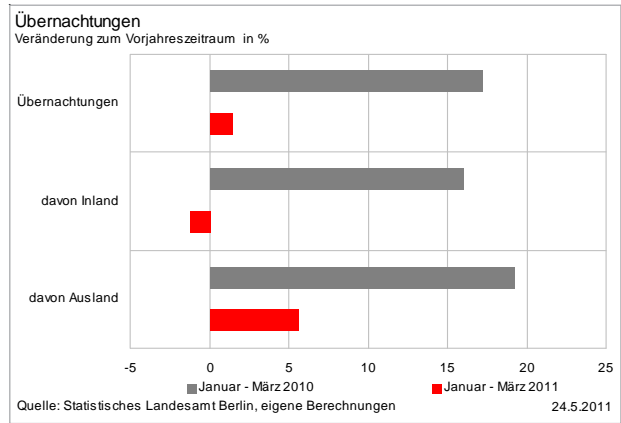
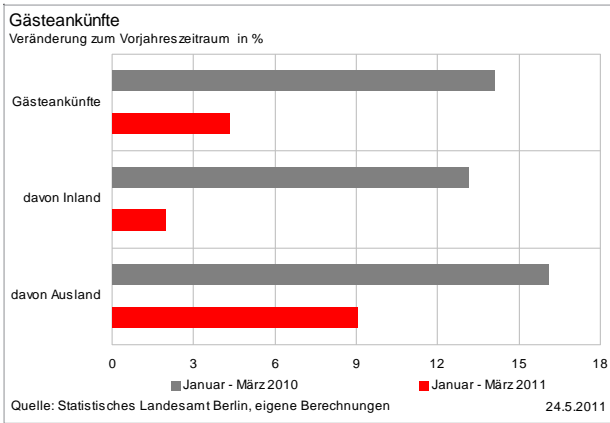
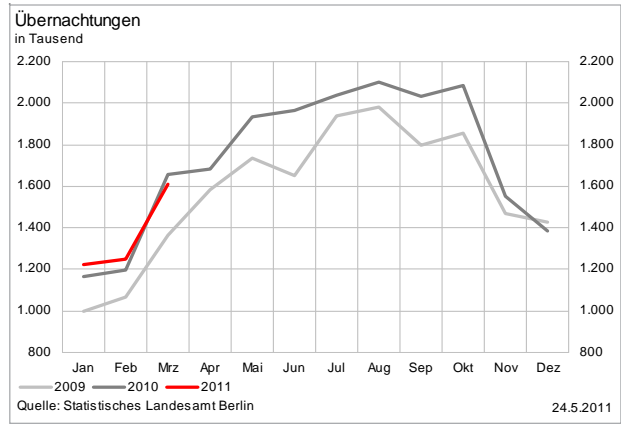
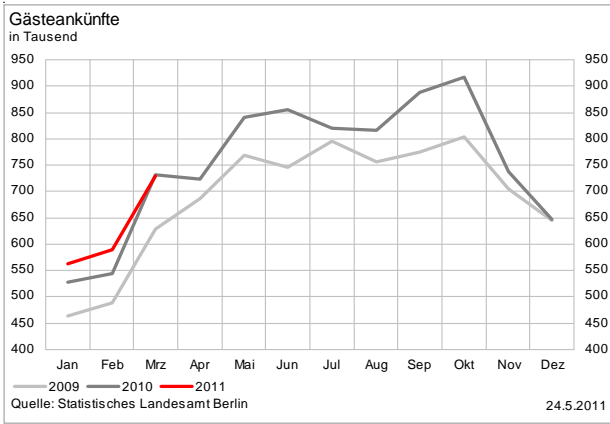


Gastgewerbe

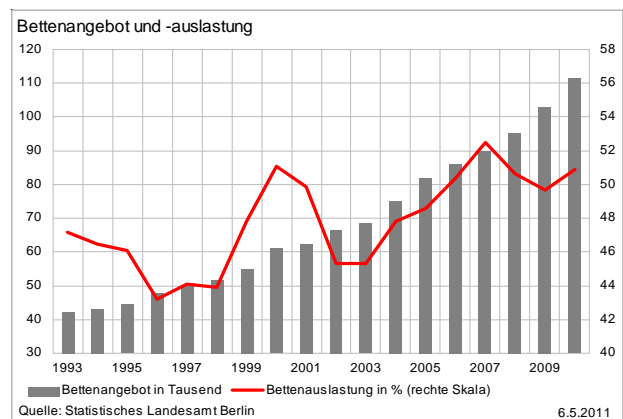
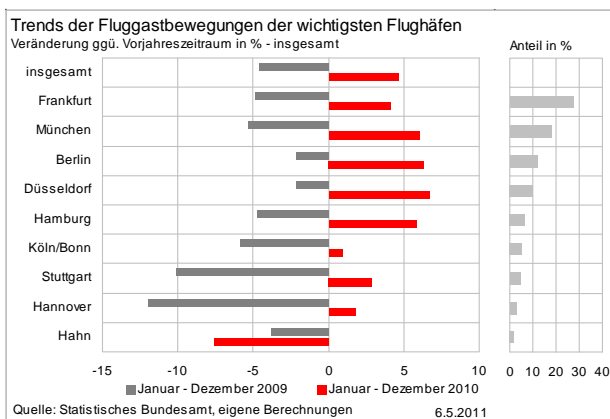
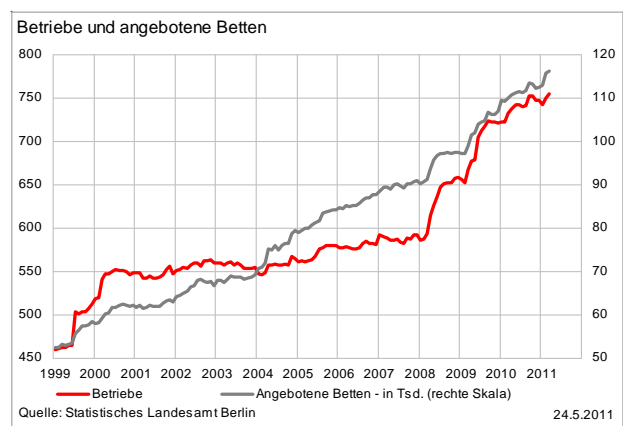
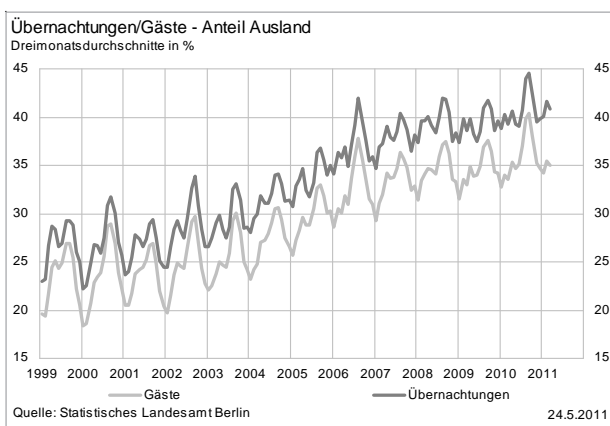
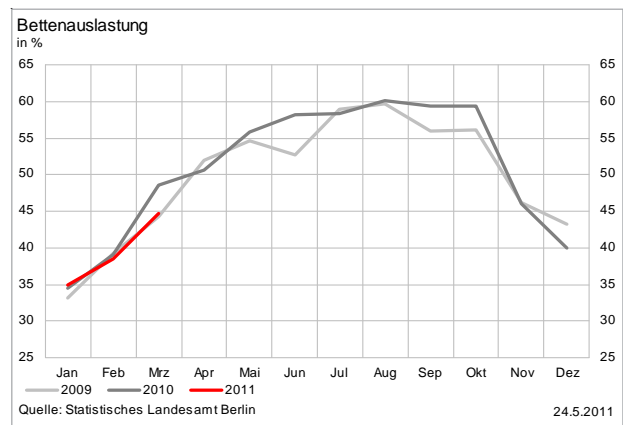
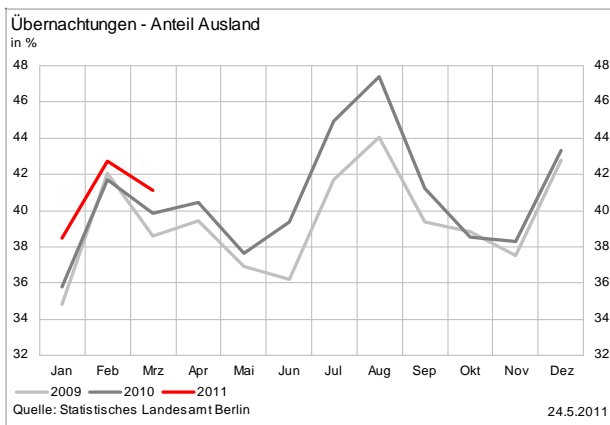
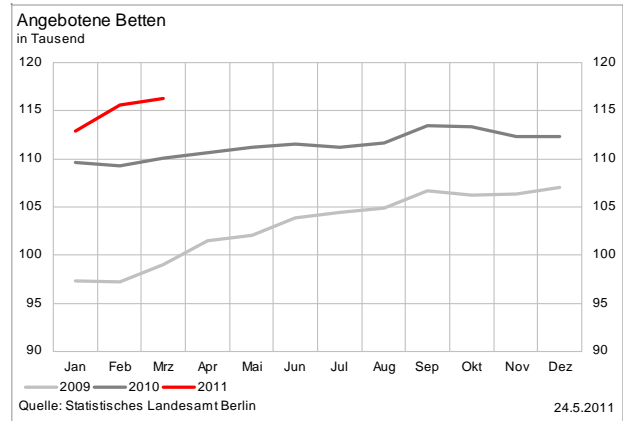
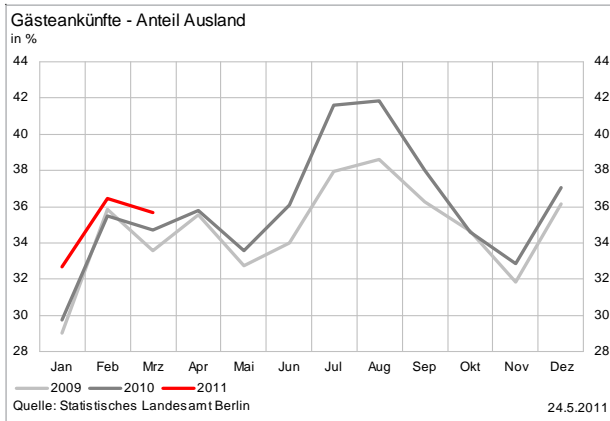
(Durch die Änderung der Systematik der Wirtschaftszweige ist ein Vergleich mit den Vorjahren nur eingeschränkt möglich)



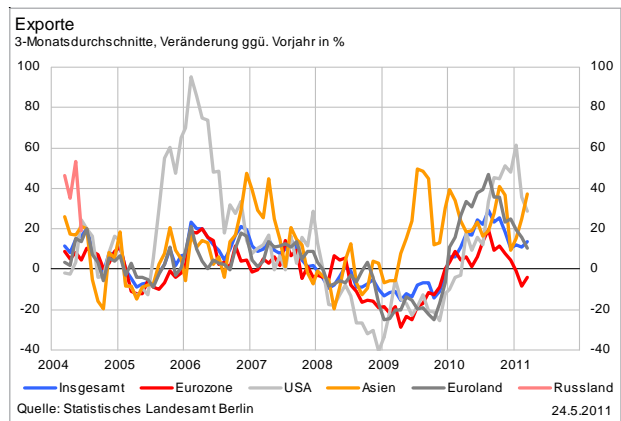
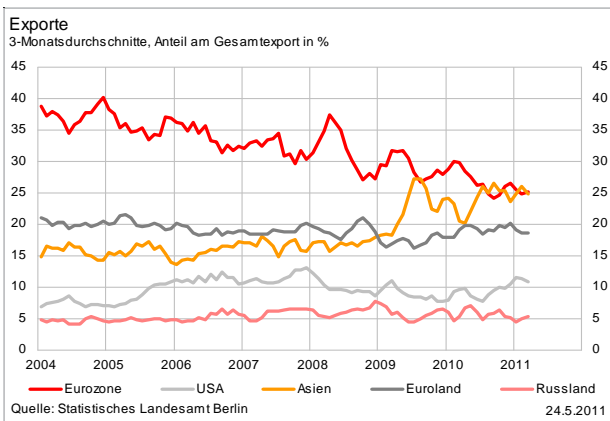
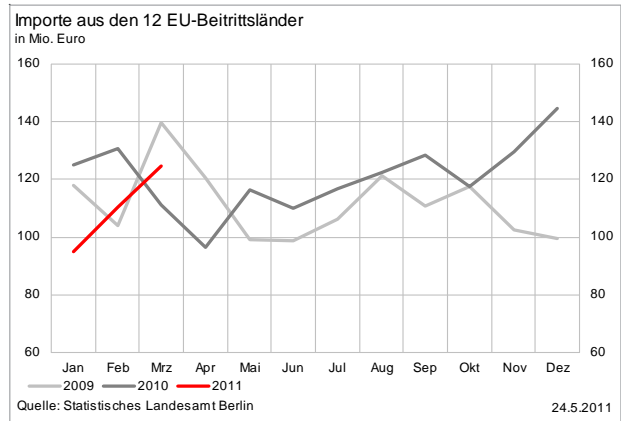
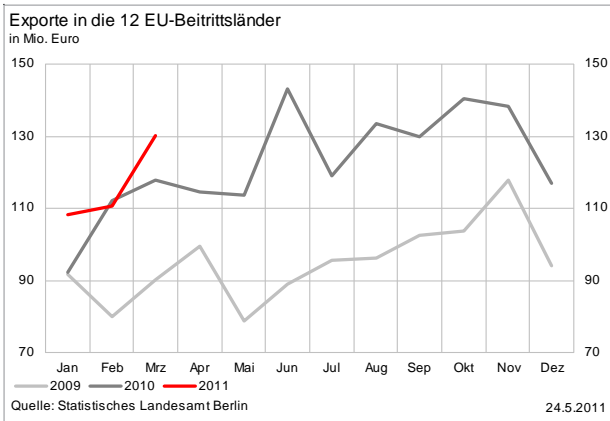
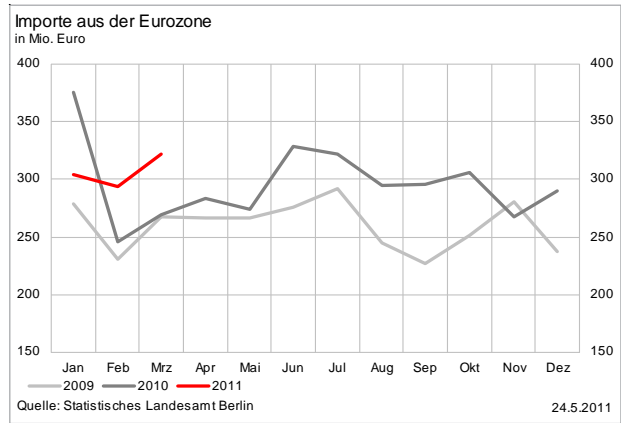
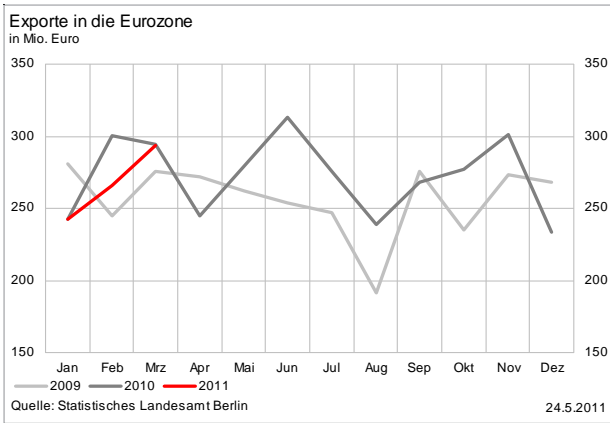
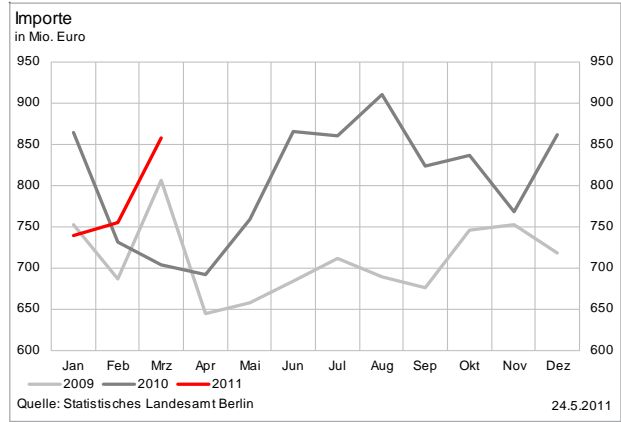
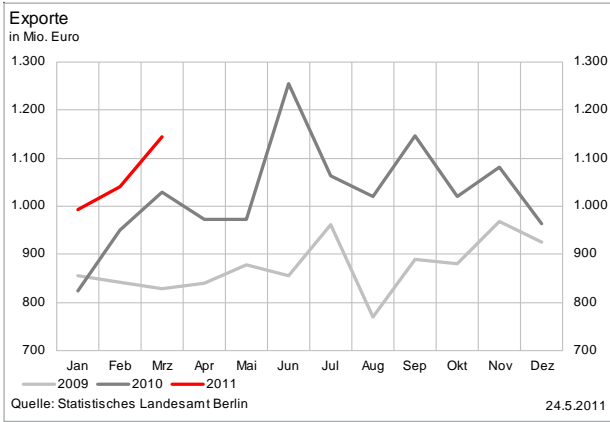
Tourismus



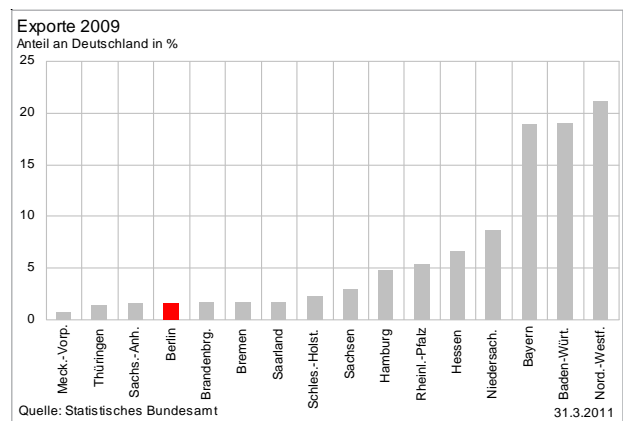
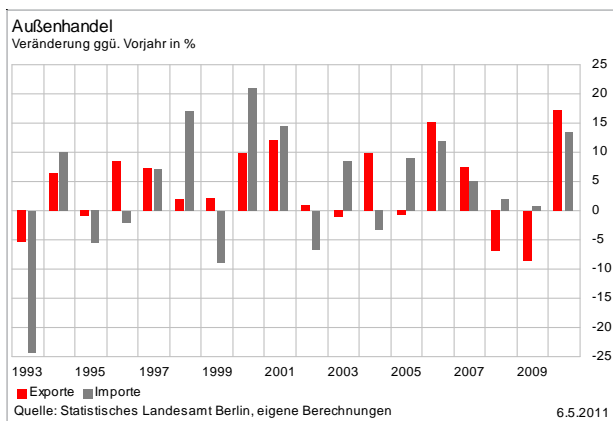
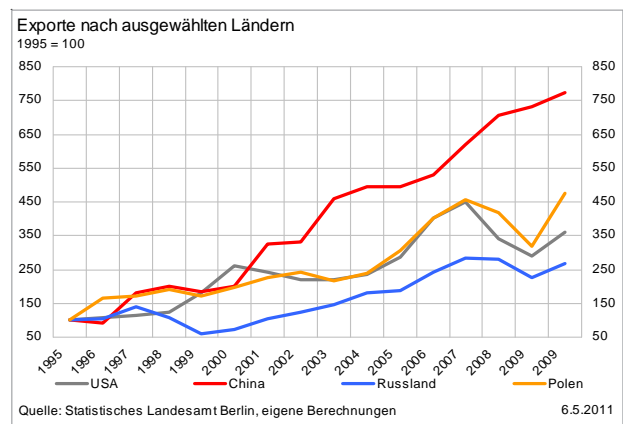
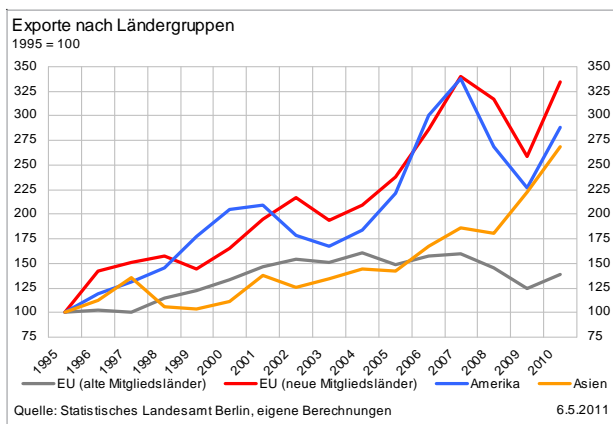
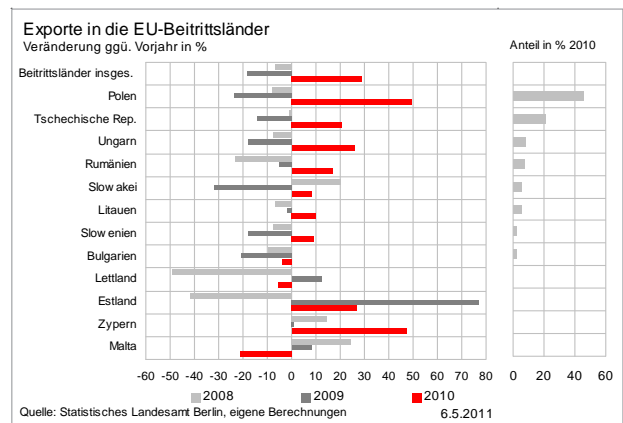
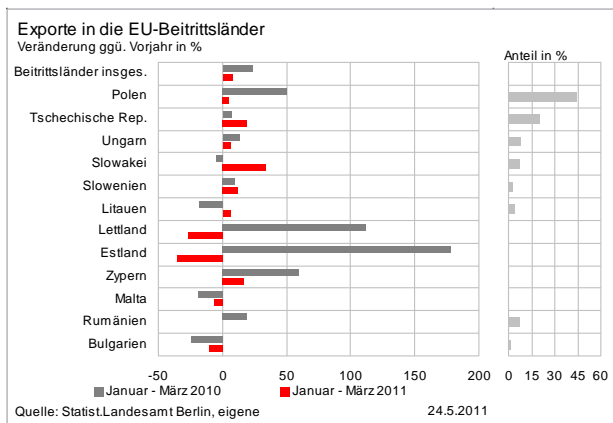
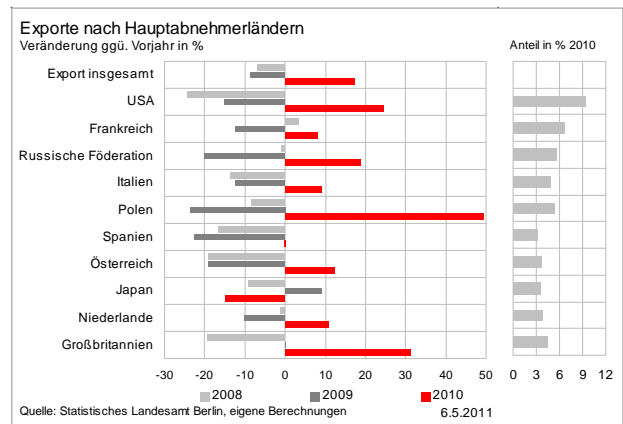
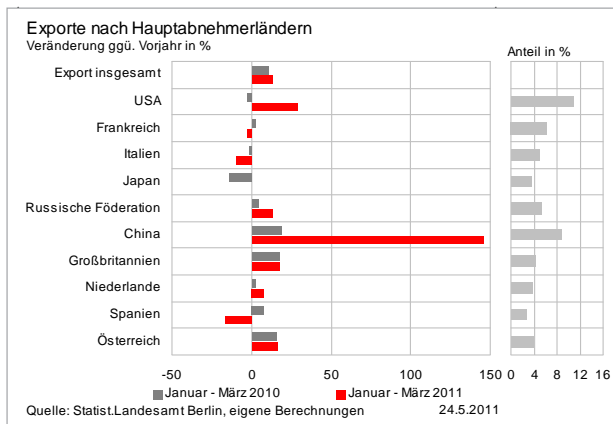
Tourismus



Ein- und Ausfuhr



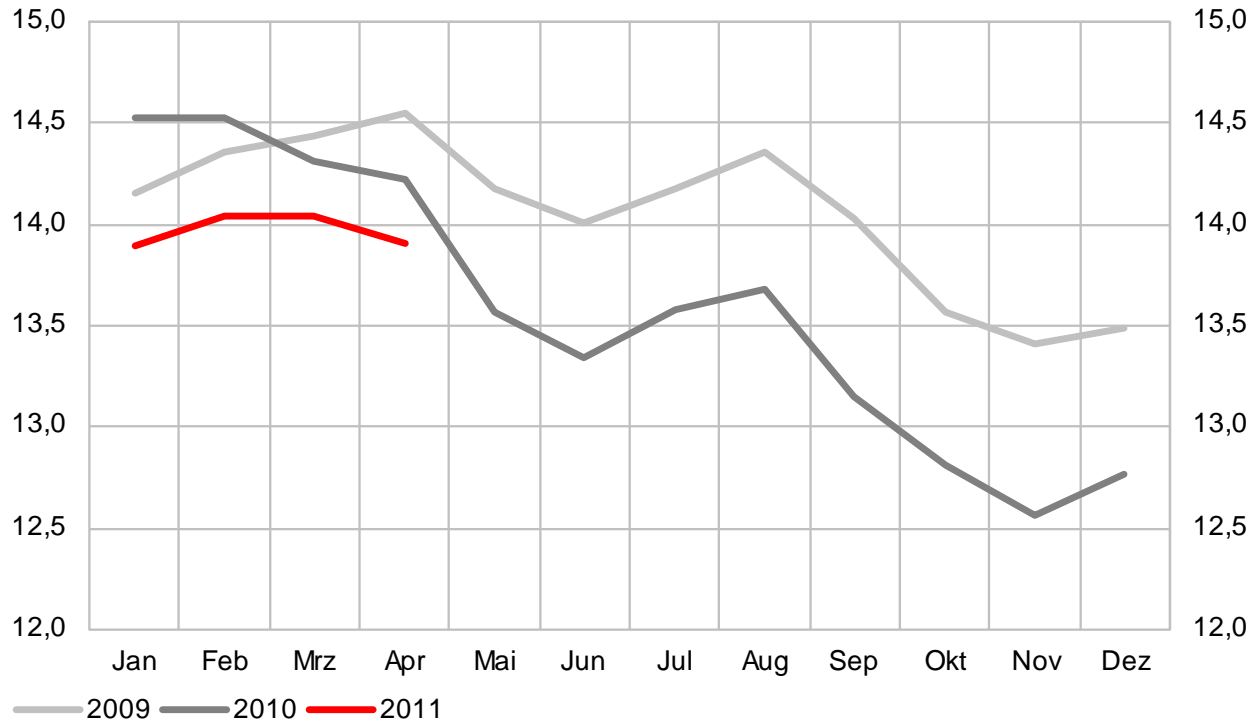
Ein- und Ausfuhr



Arbeitsmarkt

Arbeitslosenquote

in %

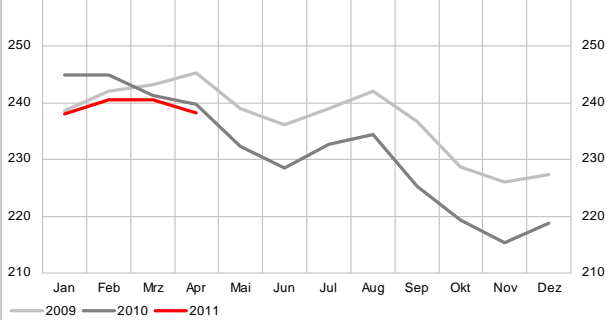


Quelle: Bundesagentur für Arbeit, ab 2005 incl. erwerbsf. Sozialhilfeempfänger

6.5.2011

Gemeldete Arbeitslose

in Tausend

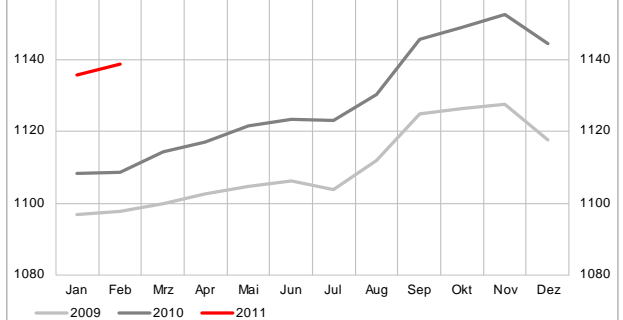


Quelle: Bundesagentur für Arbeit, ab 2005 incl. erwerbsf. Sozialhilfeempfänger

6.5.2011

Sozialversicherungspflichtig Beschäftigte

in Tausend



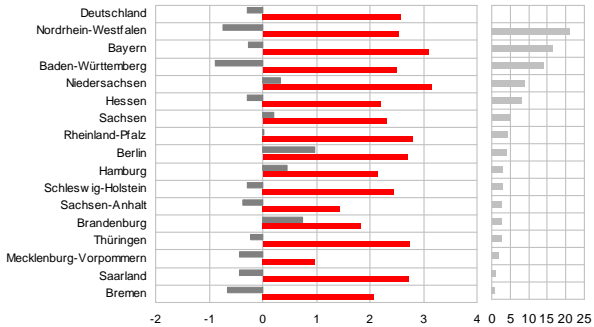
Quelle: Bundesagentur für Arbeit

6.5.2011

Sozialversicherungspflichtig Beschäftigte

Veränderung ggü. Vorjahr in %

Anteil in %

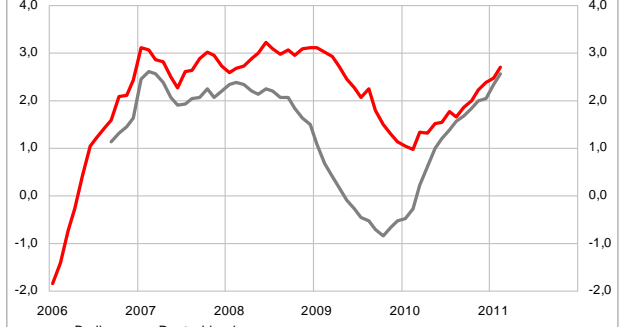


Quelle: Statistisches Landesamt Berlin, eigene Berechnungen

6.5.2011

Sozialversicherungspflichtig Beschäftigte

Veränderung ggü. Vorjahr in Prozentpunkten

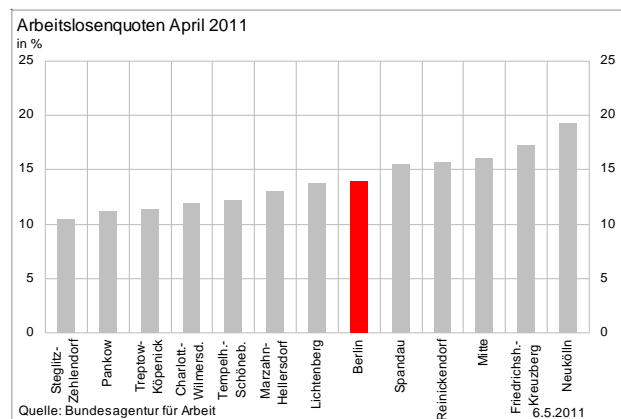
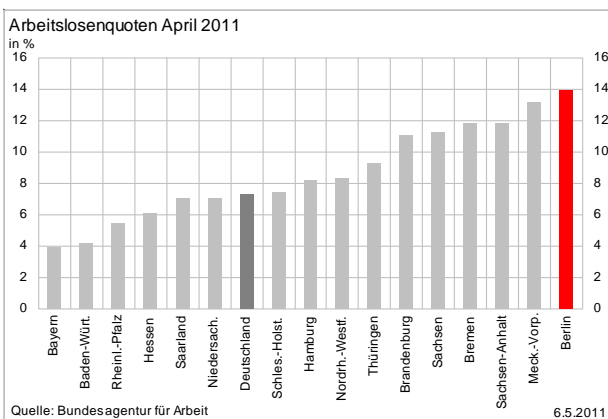
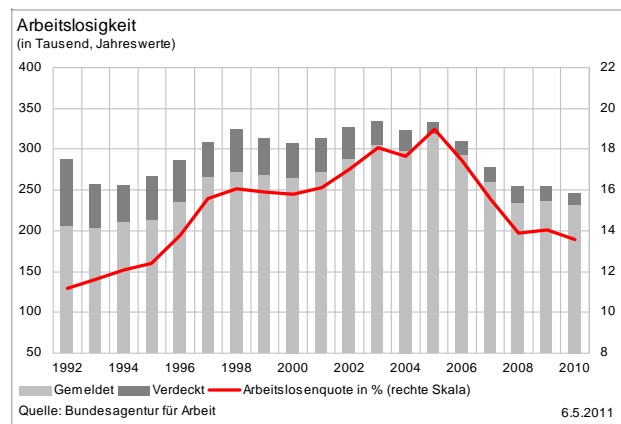
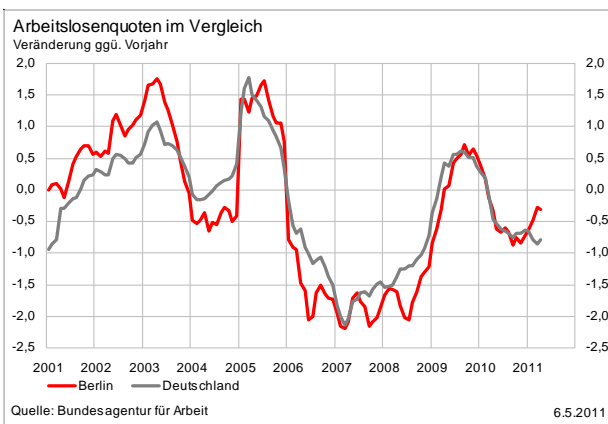
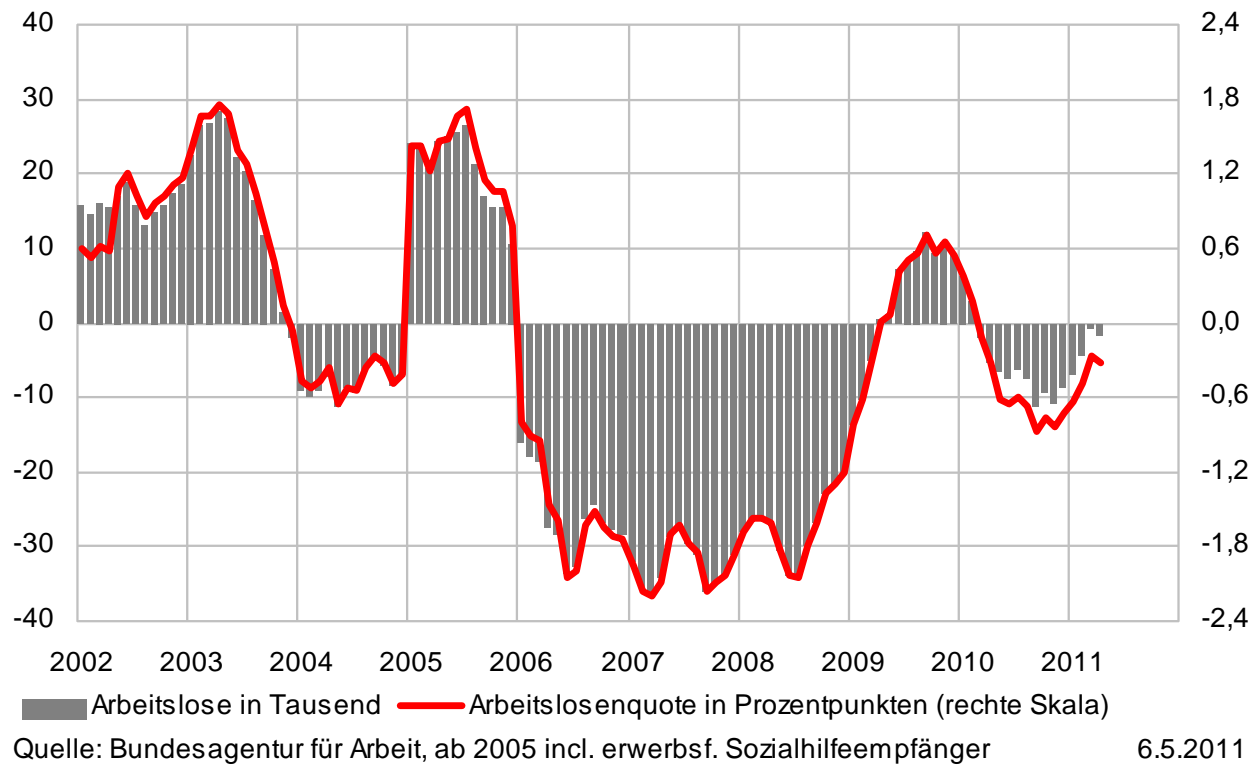


Quelle: Bundesagentur für Arbeit

6.5.2011

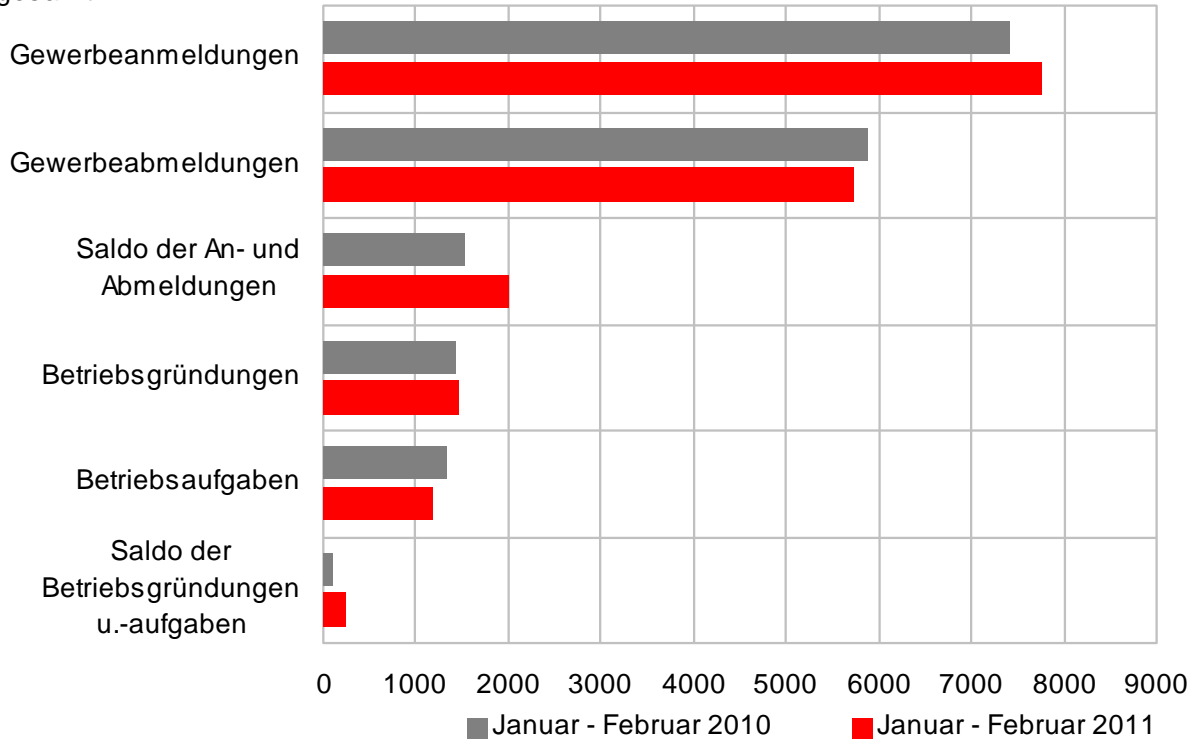
Arbeitsmarkt

Veränderung der Arbeitslosigkeit (ggü. Vorjahresmonat)



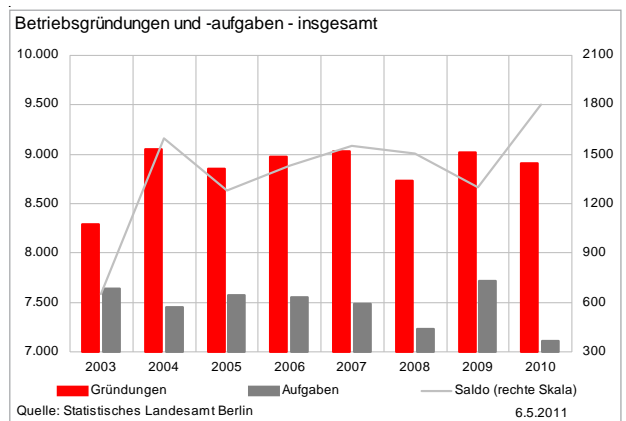
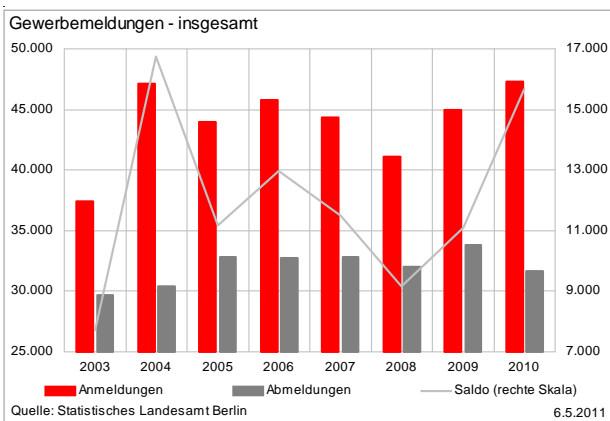
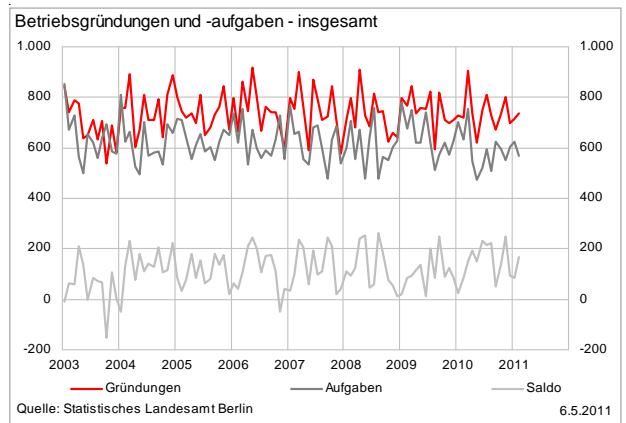
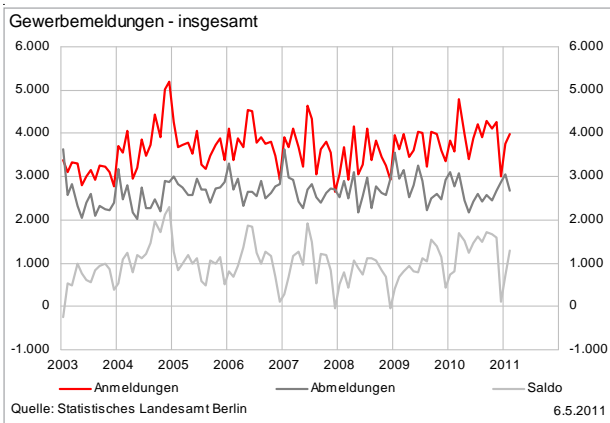
Gründungsgeschehen

Trends der Gewerbeanmeldungen insgesamt

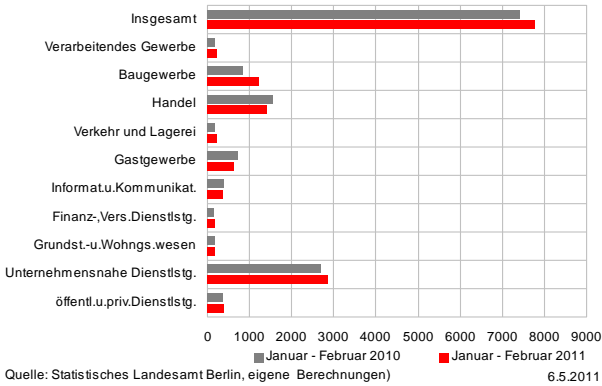


Quelle: Statistisches Landesamt Berlin, eigene Berechnungen

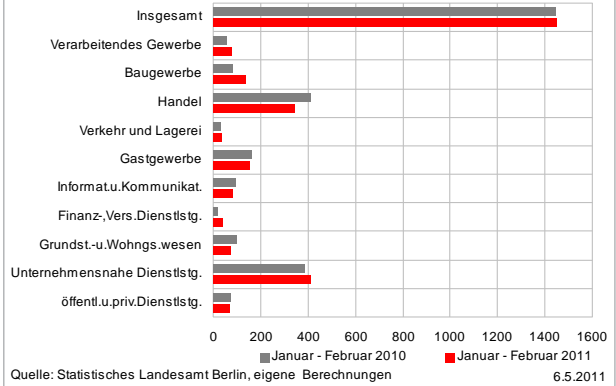
6.5.2011



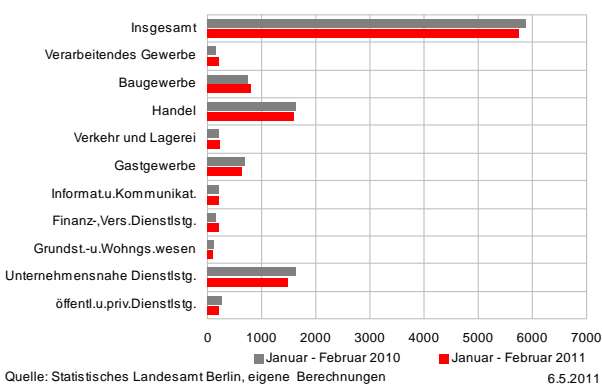
Trends der Gewerbebeanmeldungen



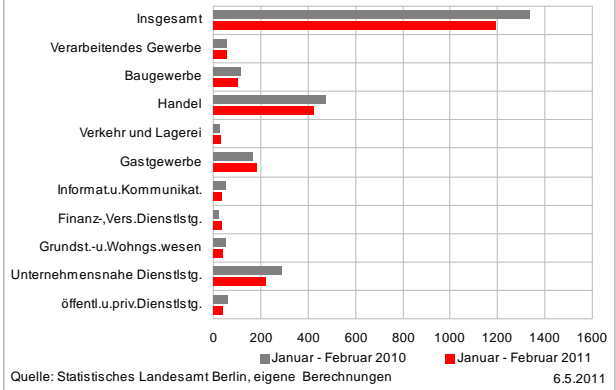
Trends der Betriebsgründungen



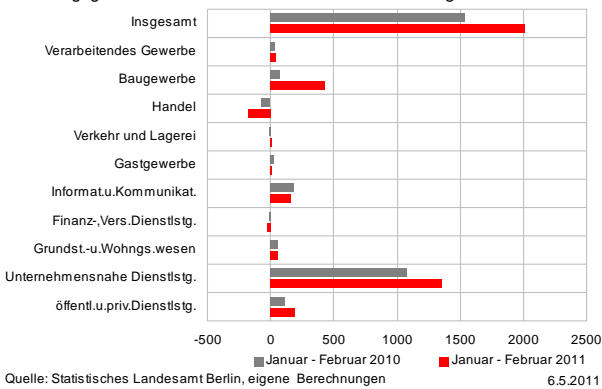
Trends der Gewerbeabmeldungen



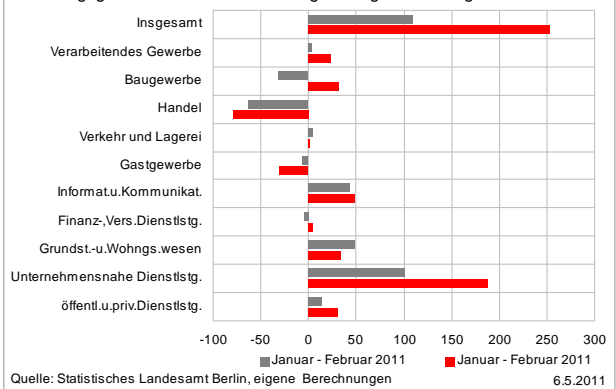
Trends der Betriebsaufgaben



Gründungsgeschehen - Saldo Gewerbebean- und abmeldungen

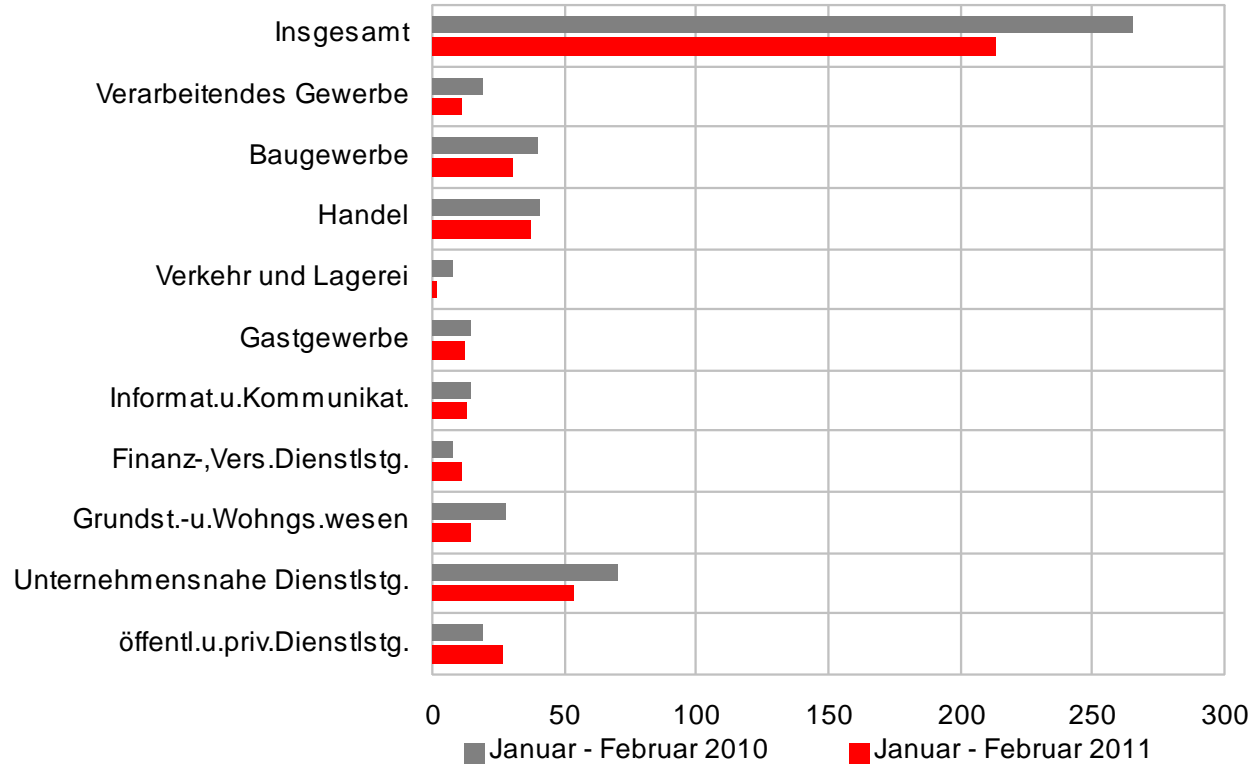


Gründungsgeschehen - Saldo Betriebsgründungen und -aufgaben



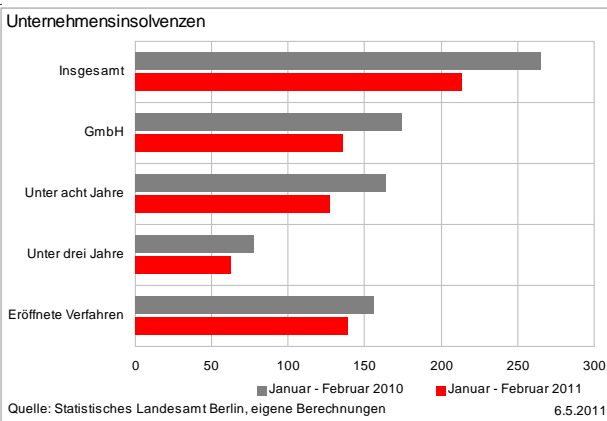
Insolvenzen

Unternehmensinsolvenzen



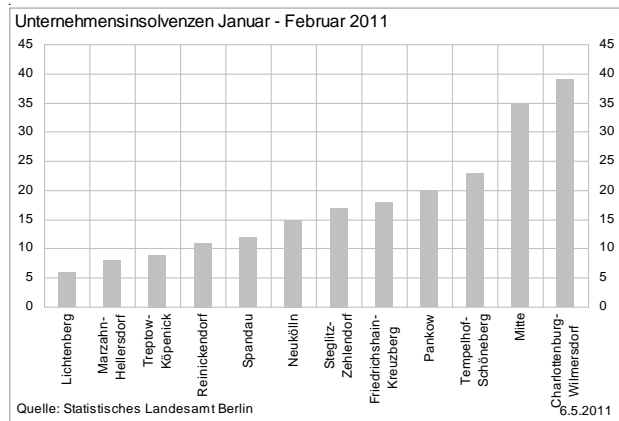
Quelle: Statistisches Landesamt Berlin, eigene Berechnungen

6.5.2011



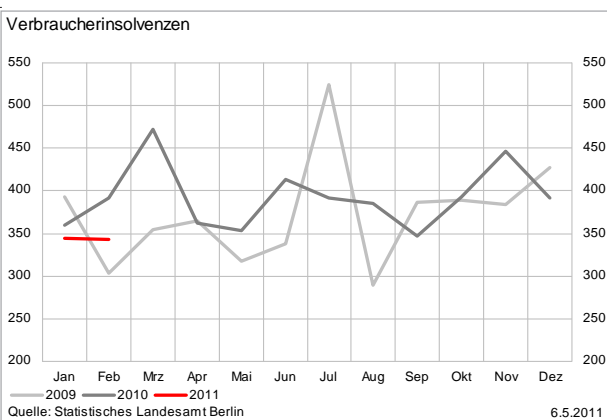
Quelle: Statistisches Landesamt Berlin, eigene Berechnungen

6.5.2011



Quelle: Statistisches Landesamt Berlin

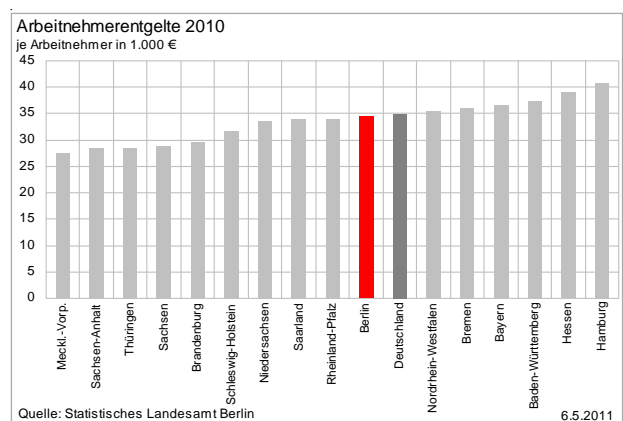
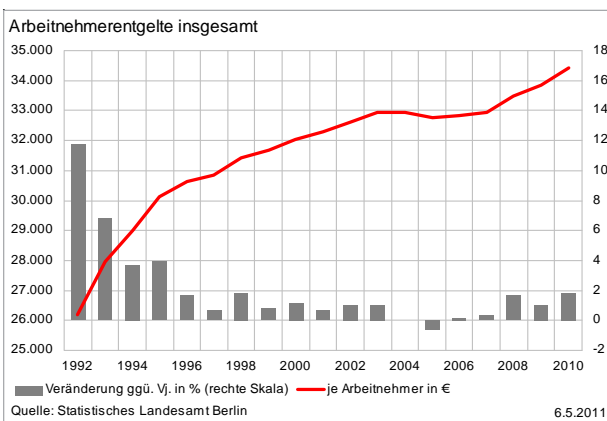
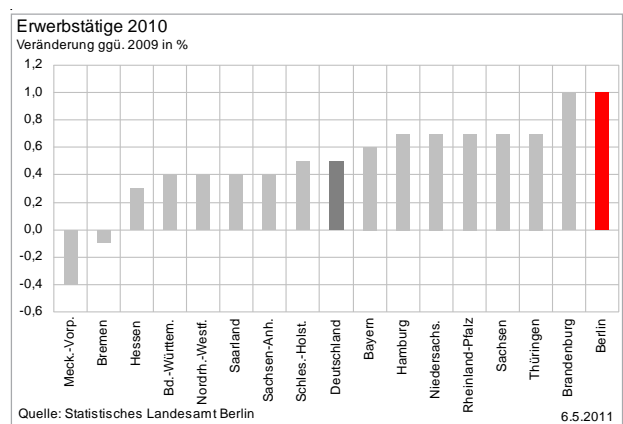
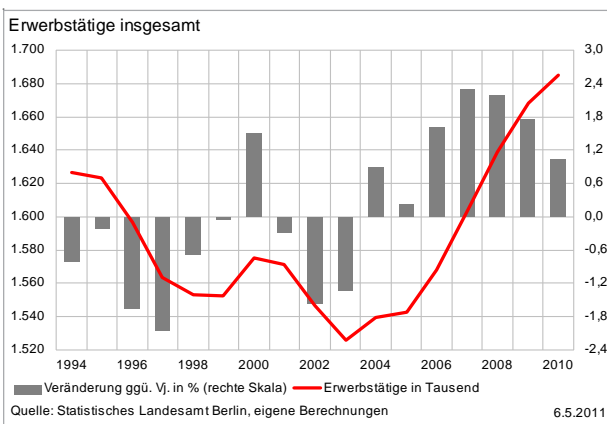
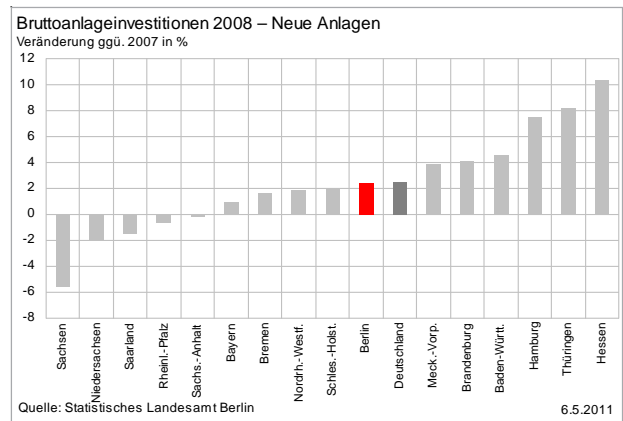
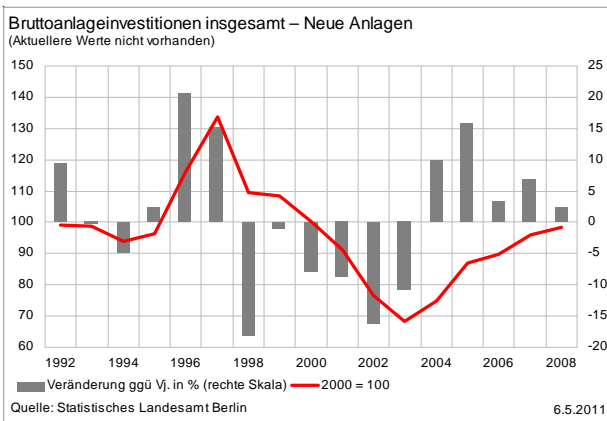
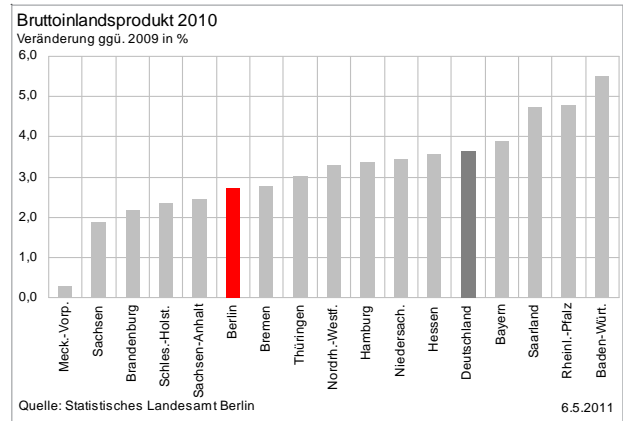
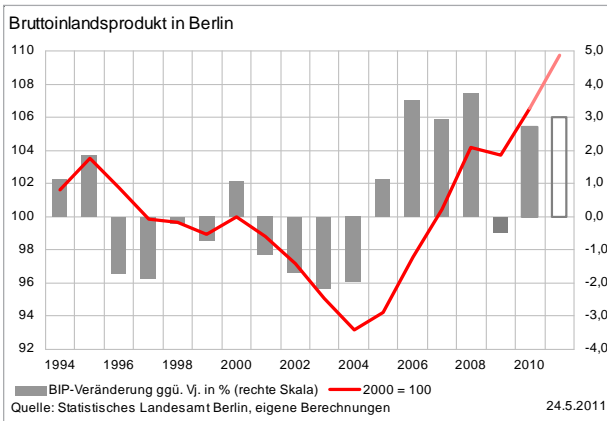
6.5.2011



Quelle: Statistisches Landesamt Berlin

6.5.2011

Wirtschaftsstruktur



Herausgeber:
Investitionsbank Berlin
Volkswirtschaft
Hartmut Mertens
Telefon 030/21 25 47 38
Telefax 030/21 25 38 03